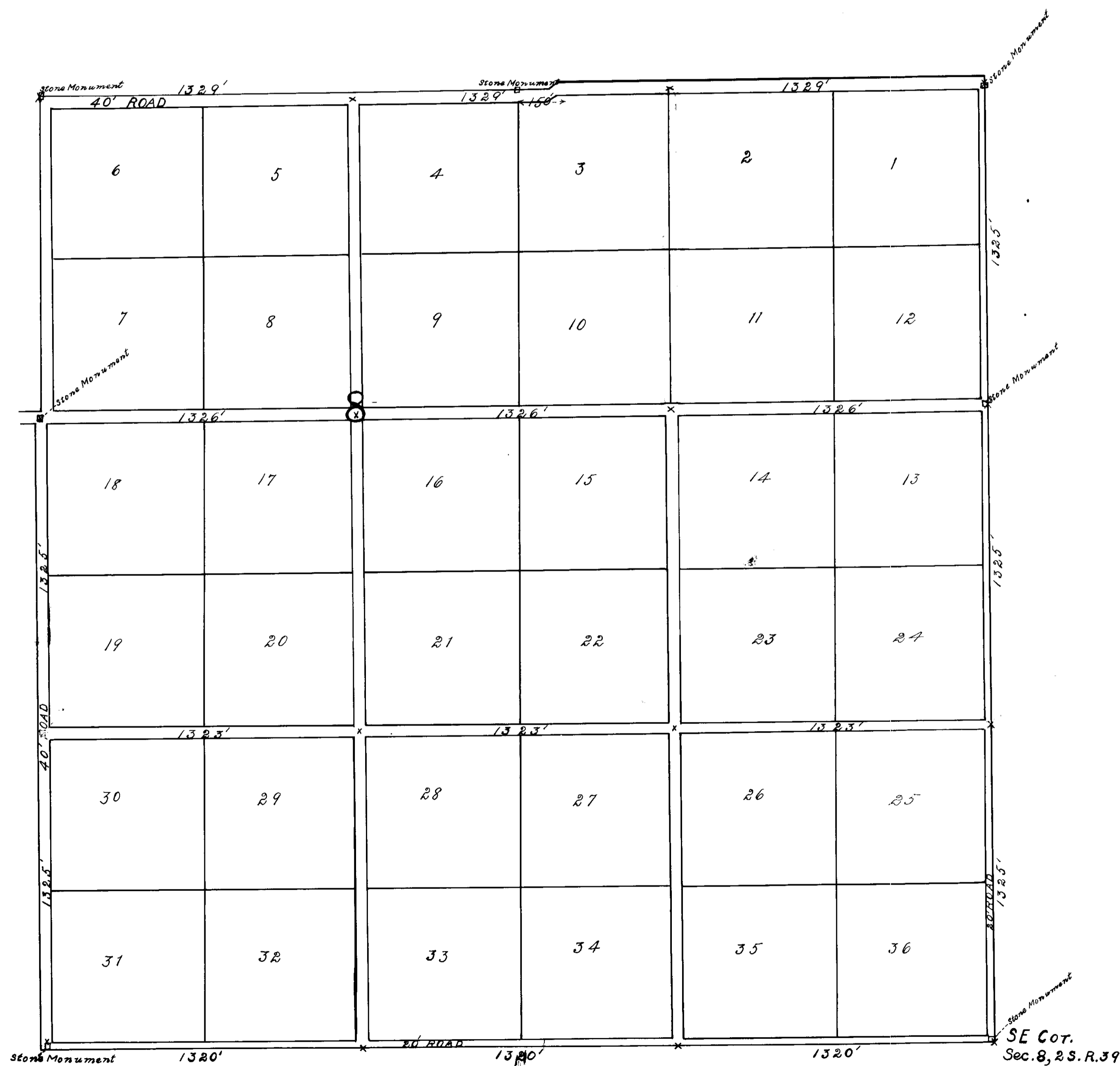


ALICEL ORCHARD TRACTS

SITUATED IN SECTION 8

SE 1/4 & E 1/2 SW 1/4 & S 1/2 NE 1/4 & SE 1/4 NW 1/4, Tp. 2 S. R. 39. E.W.M.



For vacation of part of this plat see this book at page 26
 C. K. McComie County Clerk
 By Heddie Manning Deputy.

Know all men by these Presents the LaGrande Investment Company a corporation in consideration of the benefits to accrue have platted the lands described in the accompanying plat into tracts, and we have dedicated to public use and enjoyment the Streets shown thereon and the tracts are of the size indicated.

Said lands shall hereafter be known and designated as "ALICEL ORCHARD TRACTS".

In witness whereof these presents are signed by the President and Secretary and the corporate seal affixed by virtue of a resolution of its Board of Directors this 23rd day of September 1910.

Done in presence of
 Geo. Wagner
 Minna G. Aikinel.

LaGrande Investment Co.

By W. B. Sargent President

By J. H. Wright Secretary

STATE OF OREGON {s.s.
 COUNTY OF UNION {

On this 23rd day of September 1910 before me a Notary Public personally appeared Wm. B. Sargent President of the LaGrande Investment Company personally known to me as such and acknowledged that the corporate seal affixed is the corporate seal of said corporation and that he executed the foregoing instrument as the act and deed of said corporation.

In witness whereof I have hereunto set my hand and seal this 23rd day of Sept. 1910.

STATE OF OREGON {s.s.
 COUNTY OF UNION {

Minna G. Aikinel
 Notary Public for Oregon.

I Arthur Curtis being first duly sworn say that on the 2nd day of Sept. 1910 I surveyed the lands designated on the accompanying plat and that the initial point of said survey is at the Southeast corner of said tract the same being a government corner being a stone 6 in. x 6 in. x 12 in and that iron pipe not less than 2 in. in diameter and three feet in length was driven at each corner of each tract embraced in each forty acre subdivision and that said survey conforms to law.

Arthur Curtis
 County Surveyor

Subscribed and sworn to before me this 23rd day of September 1910.

STATE OF OREGON {s.s.
 COUNTY OF UNION {

Minna G. Aikinel
 Notary Public for Oregon.

I T.A. Rhinehart do hereby certify that I have examined the County Records and find that this tract is free from taxes and conforms to the Law.

T. A. Rhinehart
 County Assessor.

Approved on this 23rd day of September 1910.

J. H. Henry
 County Judge.

County Commissioner.

County Commissioner.

Scale, 1 in = 330 ft.

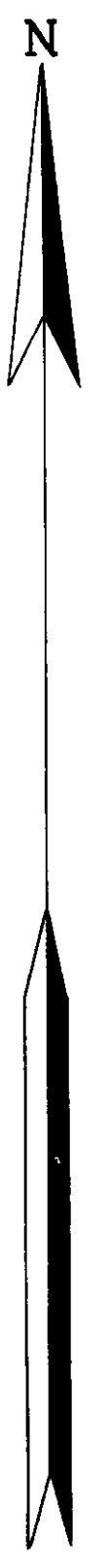
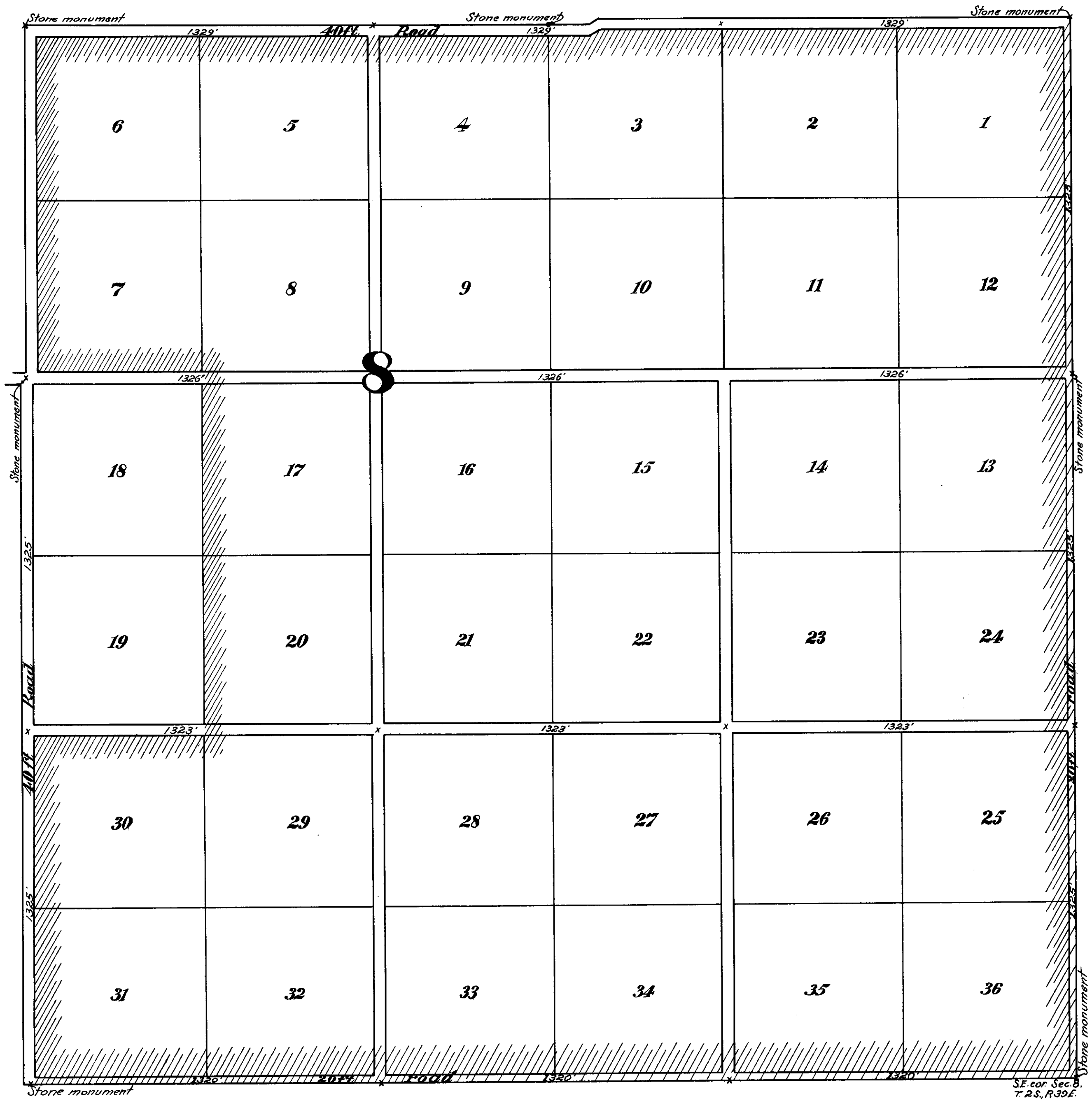
Filed September 23-1910 J. P. Swope Recorder

VACATION OF PART OF ALICEL ORCHARD TRACTS

Situated in the
SE 1/4, E 1/2 of SW 1/4, S 1/2 of NE 1/4 and SE 1/4 of NW 1/4, Sec. 8, T.2 S., R.39 E.W.M.

////// Shows portion vacated

Scale: 300ft. = 1 inch.



BE IT REMEMBERED, That at a regular term of the County Court of the State of Oregon, for the County of Union, sitting for the transaction of County business, begun and held at the Court House in the City of LaGrande, in said County and State, on Wednesday, the 7th day of November, A.D. 1917, the same being the first Wednesday of said month and the time fixed by law for holding a regular term of said Court, when were present:

The Honorable J.F. Phy, County Judge,
C.A. Galloway, Commissioner,
W.J. Townley, Commissioner,
C.K. McCormick, Clerk,
Lee Warnick, Sheriff.

WHEN, on Wednesday the 7th day of November, A.D. 1917, or on the first Judicial Day of said term, among others the following proceedings were had, to-wit:-

In the matter of the petition of The LaGrande Investment Company, a corporation, for the vacation of ALICEL ORCHARD TRACTS excepting Tracts 18 and 19 thereof.

NOW AT THIS TIME this matter comes on to be heard upon the petition of the LaGrande Investment Company, by its President, V.B. Sargent, for the vacation of the plat and survey of Alicel Orchard Tracts, excepting tracts 18 and 19 thereof.

And it appearing to the Court that the said LaGrande Investment Company is the owner in fee of all the lands embraced in said Alicel Orchard Tracts excepting tracts 18 and 19 thereof, and that, the plat or map filed herewith, showing the vacation of the said portions of Alicel Orchard Tracts, that the public is not inconvenienced in any rights or privileges by the vacation of said Plat as asked for; That the survey or plat sought to be vacated is not embraced within the boundaries of any unincorporated town; And the Court being fully advised in the premises;

IT IS HEREBY ORDERED that the petition of said LaGrande Investment Company is hereby granted, and that all of said Alicel Orchard Tracts as originally platted and surveyed, excepting as to Tracts 18 and 19 thereof, be, and the same are hereby vacated.

J.F. Phy Judge.
C.A. Galloway Commissioner.
W.J. Townley Commissioner.

STATE OF OREGON, } ss.
COUNTY OF UNION. }

Filed for record this 8th day of November, A.D. 1917, at 5 o'clock P.M.

C.K. McCormick County Clerk,

By *Hattie McMurry* Deputy.

2689