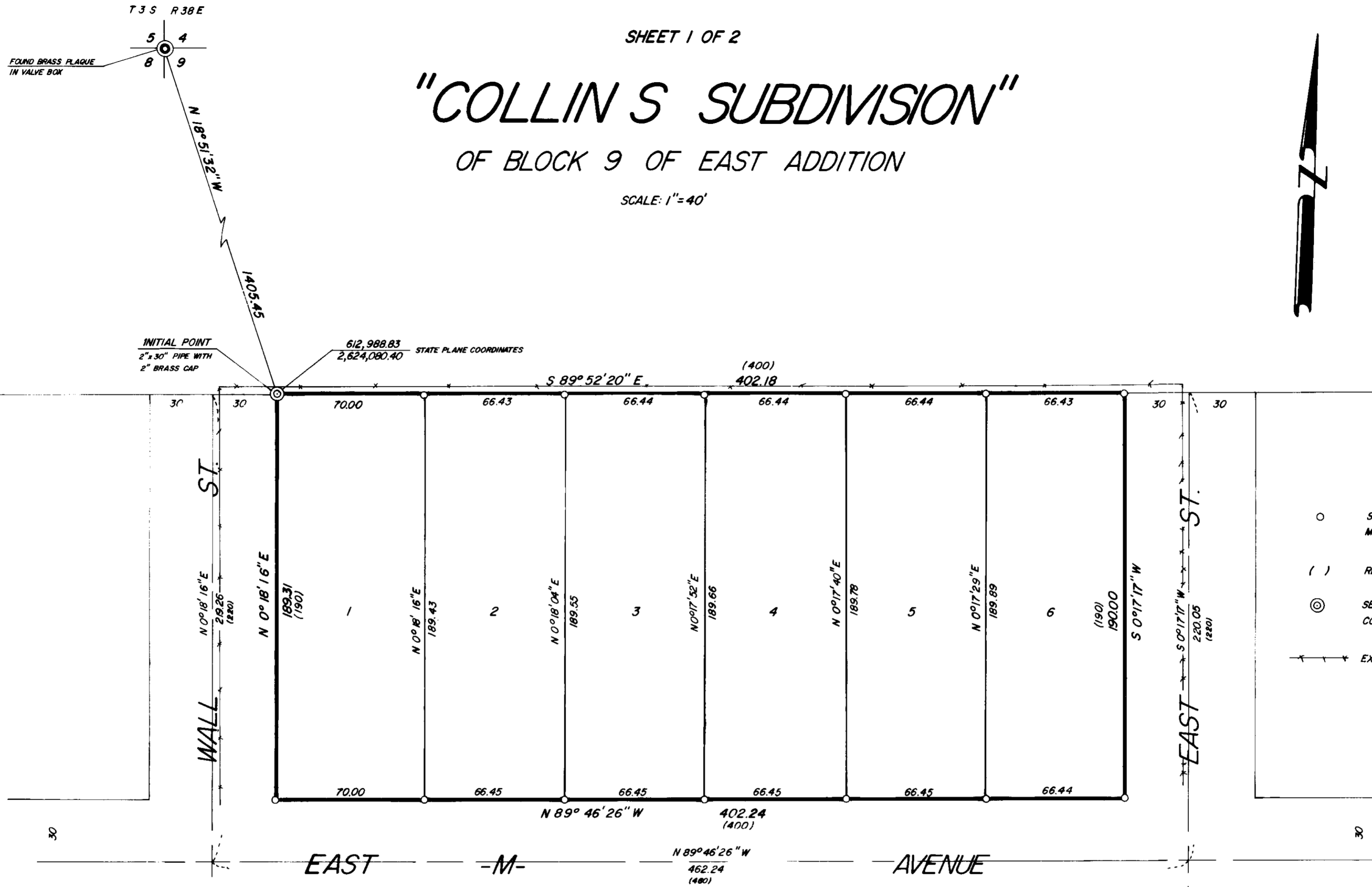


# "COLLINS SUBDIVISION" OF BLOCK 9 OF EAST ADDITION

SCALE: 1"=40'



### BASIS OF BEARING

FORWARD BEARING AS PUBLISHED BY  
U.S.C. & G.S. FROM  $\Delta$  VALLEY TO  
 $\Delta$  COLLEGE

### LEGEND

- $\circ$  SET 5/8" x 30" IRON PIN WITH PLASTIC CAP MARKED B-G-A SURVEY MARKER
- ( ) RECORD DISTANCE OR BEARING
- $\odot$  SET 2" x 30" PIPE WITH 2" BRASS CAP MARKED COLLINS SUBDIVISION + INITIAL POINT
- $\text{---} \times \times \times \text{---}$  EXISTING FENCELINE

## SURVEYORS CERTIFICATE

I, Gregory T. Blackman, Surveyor, being duly sworn, depose and say that I have surveyed, and platted, Collins Subdivision, being Block 9 of East Addition to La Grande, more particularly described as follows;

Beginning at the initial point on the East line of Wall Street, said point being 1330.00 feet South and 454.30 East of the NW corner of Section 9, T.3 S., R.38 E., W.M.; Thence; S 89° 52' 20" E., 402.18 feet, Thence; S 0° 17' 17" W., 190.00 feet, Thence; N 89° 46' 26" W., 402.24 feet, Thence; N 0° 18' 16" E., 189.31 feet to the point of beginning. That I made such a survey and plat by order of and under the direction of the owners thereof; That all corners are marked with iron pins as shown on the annexed plat in accordance with O.R.S. 92.050 and 92.060, and that the size of all lots are as shown on the plat.

Subscribed and sworn before me this 10 day of January, 1979

Mary Lou Dean  
Notary Public - Oregon  
My Commission Expires 12/1/80

Baggett, Griffith & Associates  
Gregory T. Blackman  
Partner P.L.S. 991

REGISTERED  
PROFESSIONAL  
LAND SURVEYOR

Gregory T. Blackman  
OREGON  
JULY 13, 1973  
GREGORY T. BLACKMAN  
991

### NOTE:

THE EXTERIOR BOUNDARIES OF "COLLINS SUBDIVISION" ARE BASED ON THE SURVEY NO. 1-79 AS FILED IN THE OFFICE OF THE UNION COUNTY SURVEYOR.

# "COLLINS SUBDIVISION"

OF BLOCK 9 OF EAST ADDITION

## DEDICATION

STATE OF OREGON SS:  
COUNTY OF UNION

WE, JOHN ROSS COLLINS, CONSTANCE R. COLLINS, RALPH R. ROBINSON and FRANCES A. ROBINSON, BEING DULY SWORN, DEPOSE AND SAY THAT WE ARE THE OWNERS OF "COLLINS SUBDIVISION" DESCRIBED IN THE ANNEXED SURVEYOR'S CERTIFICATE, THAT WE DID CAUSE THE SAME TO BE SURVEYED AND PLATTED AS SHOWN ON THE ANNEXED MAP.

John Ross Collins  
Constance R. Collins

Ralph R. Robinson  
Frances A. Robinson

SUBSCRIBED AND SWORN BEFORE ME THIS 19<sup>th</sup> DAY OF JANUARY, 1979

UNION COUNTY PLANNING COMMISSION

APPROVED THIS 26 DAY OF \_\_\_\_\_, 1979

Marion Brogatti  
MARION BROGOTTI  
NOTARY PUBLIC - OREGON  
My Commission Expires Aug 7 1981

Sharon Beck  
PLANNING COMMISSION CHAIRPERSON

UNION COUNTY SURVEYOR

EXAMINED AND RECOMMENDED FOR APPROVAL THIS 7 DAY OF Feb., 1979

James E. Healey Baker County Surveyor

CITY OF LA GRANDE ENGINEER

EXAMINED AND RECOMMENDED FOR APPROVAL THIS 20<sup>th</sup> DAY OF FEB., 1979

Wm. D. Hamilton

CITY OF LA GRANDE PLANNING COMMISSION

APPROVED THIS 23<sup>rd</sup> DAY OF Feb., 1979

Gail Ward

REGISTERED  
PROFESSIONAL  
LAND SURVEYOR  
Gregory T. Blackman  
OREGON  
JULY 15, 1973  
GREGORY T. BLACKMAN  
991

UNION COUNTY COURT

APPROVED THIS 9<sup>th</sup> DAY OF MARCH, 1979

[Signature]

UNION COUNTY ASSESSOR

I HEREBY CERTIFY THAT PURSUANT TO ORS 92.095, ALL AD VALOREM TAXES AND ALL SPECIAL ASSESSMENTS, FEES AND OTHER CHARGES REQUIRED BY LAW TO BE PLACED ON THE \_\_\_\_\_ TAX ROLL WHICH BECAME A LEIN ON THIS SUBDIVISION OR WILL BECOME A LEIN DURING THIS CALENDAR YEAR BUT NOT YET CERTIFIED TO THE TAX COLLECTOR FOR COLLECTION, HAVE BEEN PAID TO ME.

DATE FEB 22, 1979 ASSESSOR Roy L. Long

By Dathy Goodwin  
Deputy

UNION COUNTY TREASURER

I HEREBY CERTIFY THAT ALL AD VALOREM TAXES AND ALL SPECIAL ASSESSMENTS, FEES AND OTHER CHARGES REQUIRED BY LAW TO BE PLACED UPON THE TAX ROLL WHICH HAVE BECOME A LEIN ON THIS SUBDIVISION AND THAT NOW ARE DUE AND PAYABLE HAVE BEEN PAID.

DATE Feb 22 1979 TREASURER [Signature]

## FILING STATEMENT

UNION COUNTY CLERK

83340

FILED FOR RECORD THIS 12 DAY OF March, 1979, AT 9:45 O'CLOCK A.M.

ON PAGE 90 IN BOOK 3 OF PLATS OF UNION COUNTY.

\_\_\_\_\_  
UNION COUNTY CLERK

BY maile m. m. m. Deputy