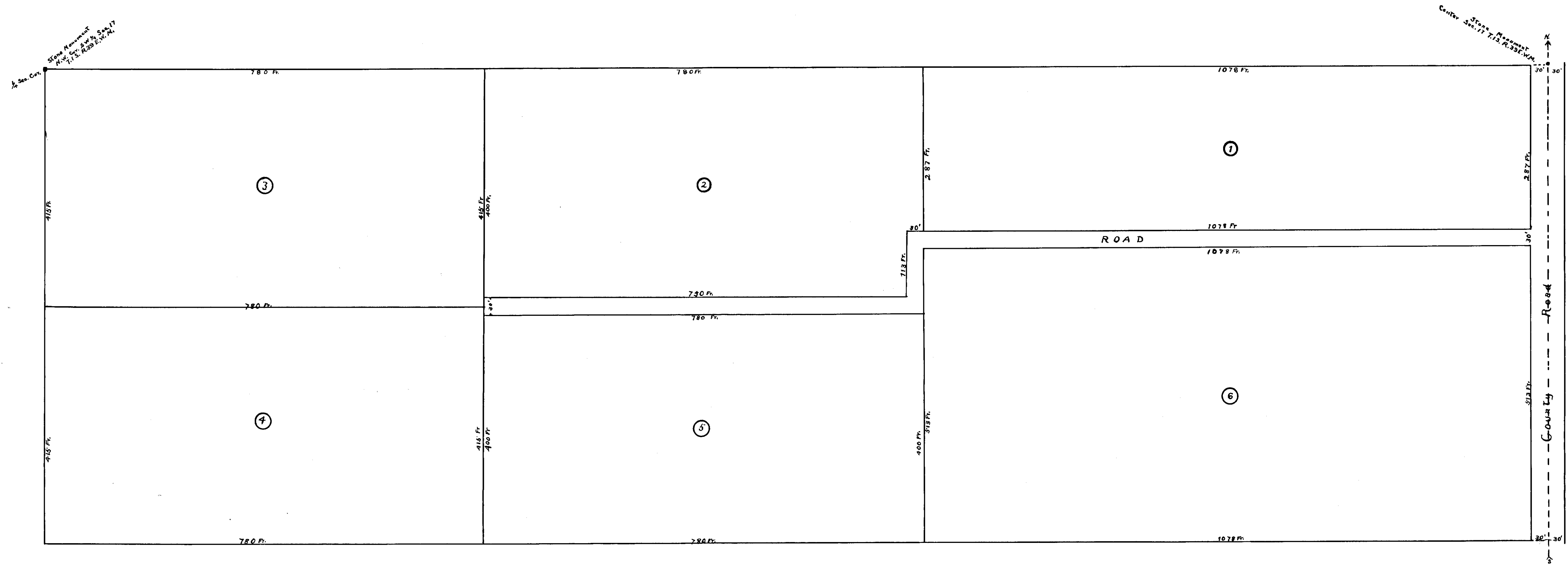


# IMBLER ORCHARD TRACTS

Situated in the N<sup>1</sup>/<sub>2</sub> of S.W<sup>1</sup>/<sub>4</sub> Section 17 T. 15. R. 39 E.W.M.

Scale 100 Ft = 1 inch



See Cont. State Monument  
 Cont. 17 T. 15. R. 39 E.W.M.

State Monument  
 Cont. 17 T. 15. R. 39 E.W.M.

Know all Men by these Presents That the La Grande Investment Company a corporation, and owners of the herein described tract of land, surveyed and named Imbler Orchard Tracts, do in consideration of the benefits to accrue, hereby dedicate to the public forever, the road which is designated and shown on said plat. In Witness Whereof, the La Grande Investment Company has caused these presents to be signed by its President and Secretary and its Corporate seal affixed, by virtue of a resolution of its Board of Directors, duly made and entered this 11 day of April 1910.

Witnesses

La Grande Investment Company  
 By *W. B. Sargent* President  
 By *J. H. Wright* Secretary

State of Oregon,  
 County of Union, ss. Be it remembered that on this the 11<sup>th</sup> day of April 1910 before me the undersigned a Notary Public in and for the aforesaid County and State, personally appeared W. B. Sargent, President of the La Grande Investment Company, the foregoing named corporation, and who is known to me to be the identical person he represents himself to be, and who acknowledge to me that the foregoing instrument was executed as the voluntary act and deed of the said corporation and that the Corporate Seal affixed is the corporate seal of the said corporation, and that the same was affixed by virtue of a resolution of the Board of Directors of said corporation duly made and entered on the 11<sup>th</sup> day of April 1910.

In Witness whereof I have hereunto set my hand and Seal on this the day and year last above in this certificate written.

*Moira G. Aikine*  
 Notary Public for Oregon

State of Oregon ss.  
 County of Union | J. A. Rinehart do hereby certify that I have examined the County Records and find that the above Tract is free from Taxes and conforms to the law.

*J. A. Rinehart*  
 County Assessor

State of Oregon ss.  
 County of Union | I Arthur Curtis do hereby certify that I surveyed the above Imbler Orchard Tracts and the above Plat shows the actual distances as measured by me upon the ground and conforms to the legal subdivision of the Section.

*Arthur Curtis* County Surveyor

Approved on this 14<sup>th</sup> day of April 1910  
*J. C. Keesey* County Judge

Filed April 14<sup>th</sup> 1910  
*A. B. Swan* Recorder