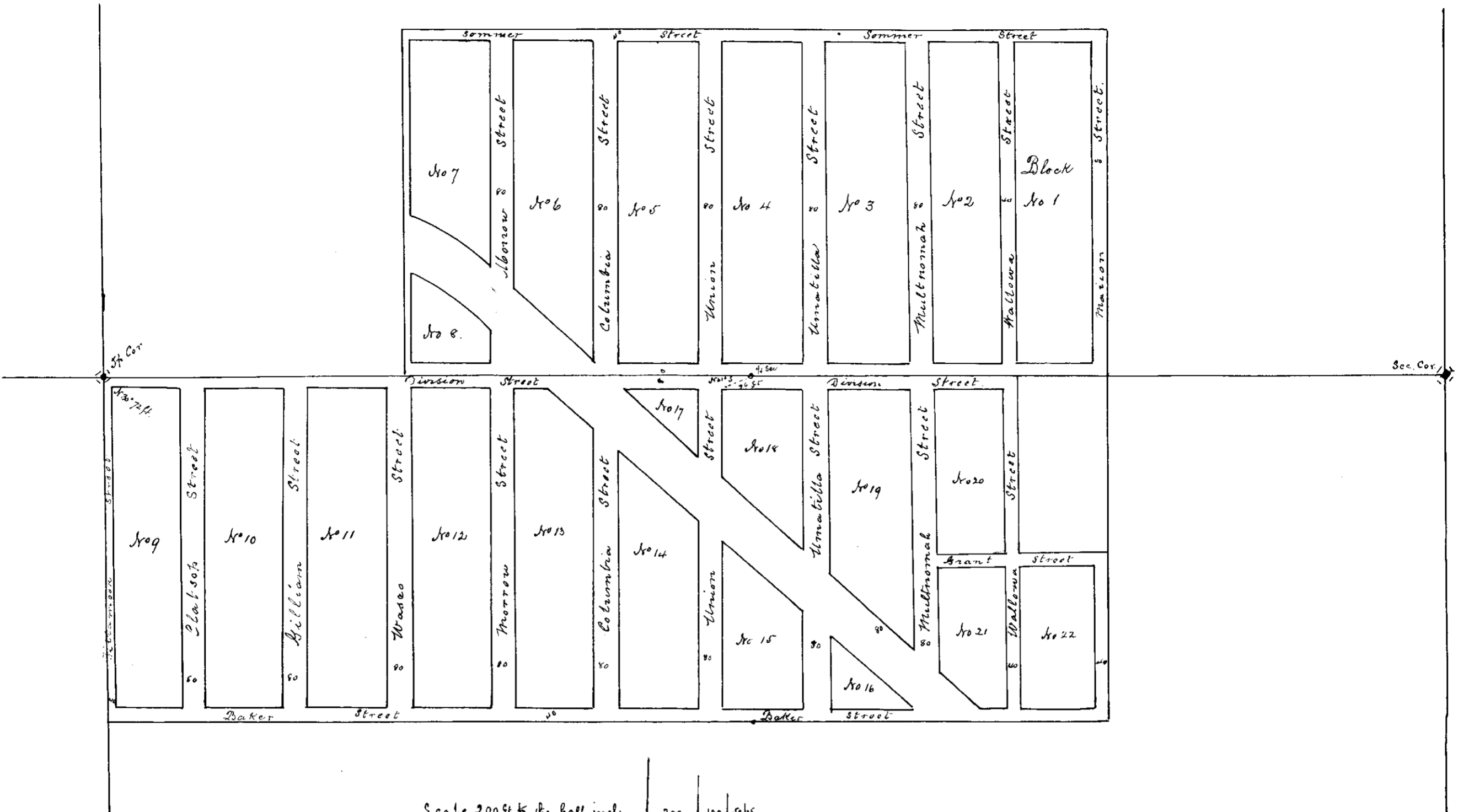


SOMMER & BAKER'S ADDITION,

1889005

To La Grande.

Sec. 31.  
T. 2. S. R. 32. E. W. 22.



Scale 200ft to the half inch  
Original Plat 200ft to the Inch.

T. 2. S. R. 32. E. W. 22.  
Sec. 6.

A. Sommer & M. Baker to Town of LaGrande  
Dedication of Streets.

To whom it may concern: Know ye that we A. Sommer and M. Baker hereby and by these presents have and by these presents do, record and file this plat or map, which only represents both blocks and streets according to the Survey made by us of Sommer & Baker's Addition to LaGrande which is situated on and includes the S.E. of S.W. & S.W. of S.E. of Sec. 31, T. 2. S. R. 32. E. of W. 22, and N. of N.W. & S.W. of N.E. of Sec. 6, T. 2. S. R. 32. E. W. 22, in Union County Oregon. And we do hereby dedicate to the Public the streets herein represented on this plat or map for the use of the Public forever. In Testimony whereof we have hereunto set our hands and seals this 21st day of June A. D. 1889.

In presence of  
J. F. Baker      A. P. Miller

A. Sommer: *[Signature]*  
M. Baker: *[Signature]*

State of Oregon  
County of Union. Be it remembered that on this 21st day of June A. D. 1889, before me a Notary Public in & for said County and State personally appeared A. Sommer and M. Baker to me personally known to be the identical persons who made and executed the within plat or map and who caused the same to be filed and recorded and who made the dedication to the public of the streets marked on this plat and they and each of them acknowledged to me that they signed said plat and executed the same freely and voluntarily for the purposes herein mentioned. Witness my hand and Notarial Seal the day and year above mentioned.

*[Notarial Seal]*

J. F. Baker  
Notary Public for Oregon

Recorded June 21st 1889  
A. J. Keill, Co. Clerk  
By Turner Oliver Deputy