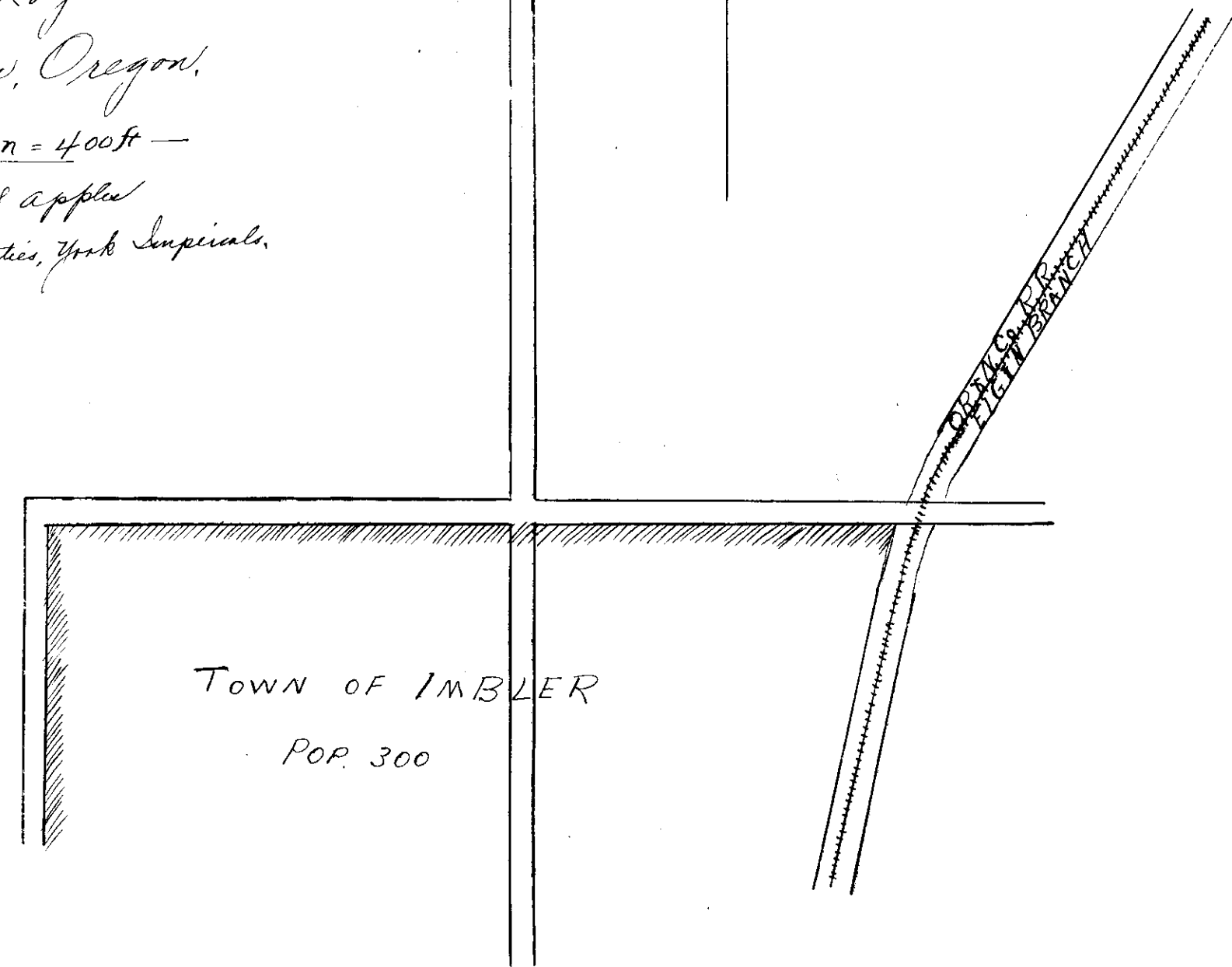
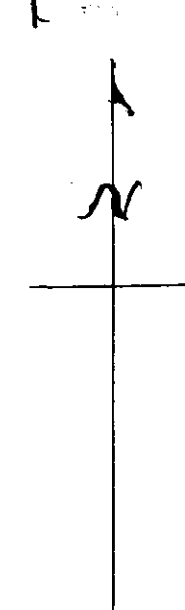


I hereby certify that I made the survey of the ground as represented by this plat, and that the said plat is an accurate description of said ground, and that the tracts are the size indicated on said plat.

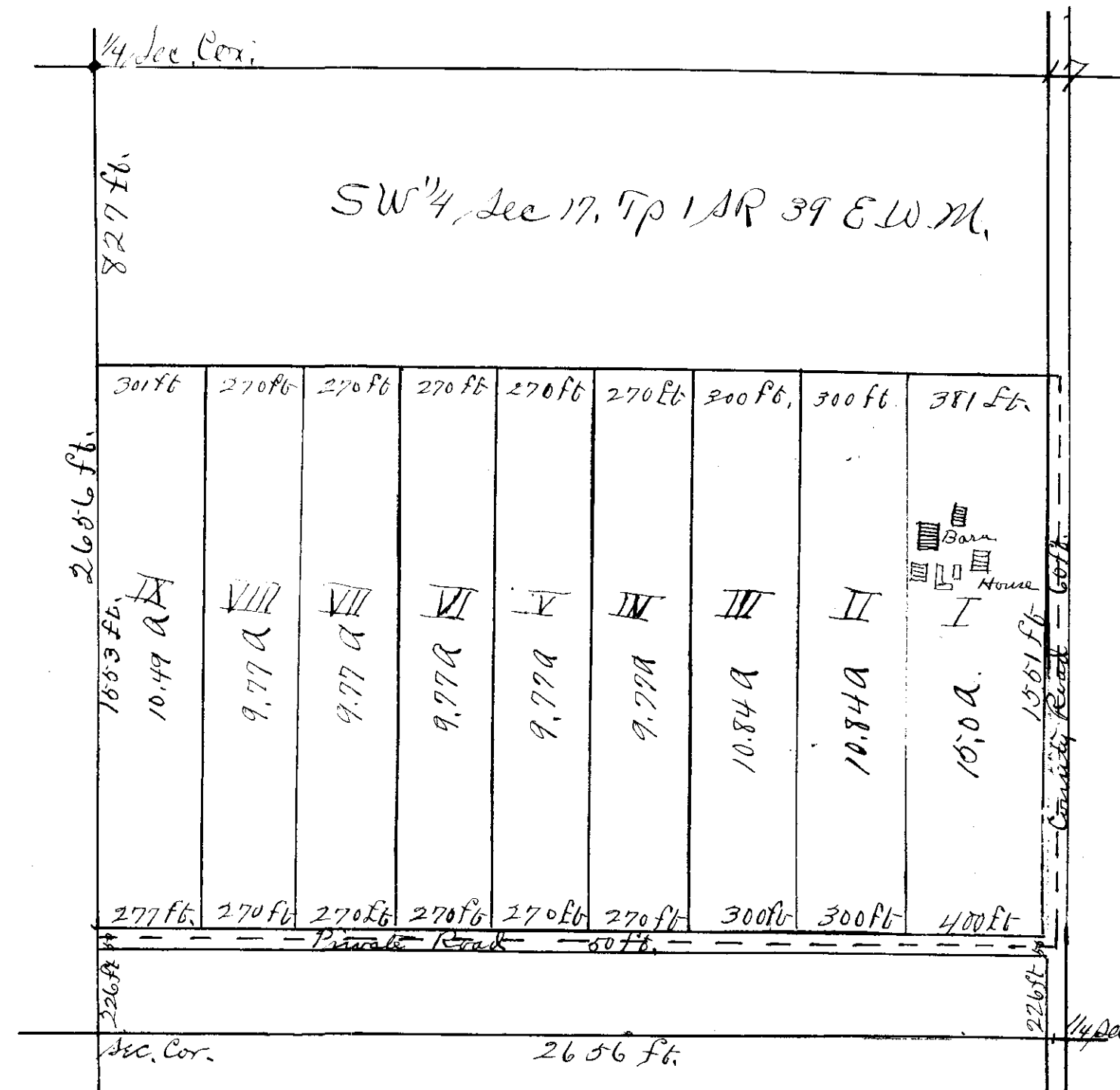
L. R. Thornton  
Deputy County Surveyor

V. A. Laidlaw  
Apple Orchard  
Two Acre Tracts  
sold by  
R. H. Logan  
La Grande, Oregon.  
— Scale 1 in = 400 ft —  
Varieties of Apples  
Grain, Roman Beauties, York Imperial.



Recorded October 26th, 1907, at 3:20 P.M.

D. H. Procter Recorder



I hereby certify that I made the survey of the ground as represented by this plat, and that the said plat is an accurate description of said ground and that the tracts are the size indicated on said plat.

C. R. Thornton  
Deputy County Surveyor

Recorded Jan. 4<sup>th</sup> 1908  
at 3 o'clock P.M.

D. H. Proctor  
Recorder

W. A. Laidlaw.  
Apple Orchard -  
Ten Acre Tracts  
Sold By R. W. Logan  
La Grande, Oregon.

Scale 1 in. = 400 ft.

