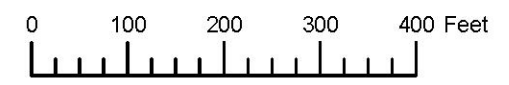
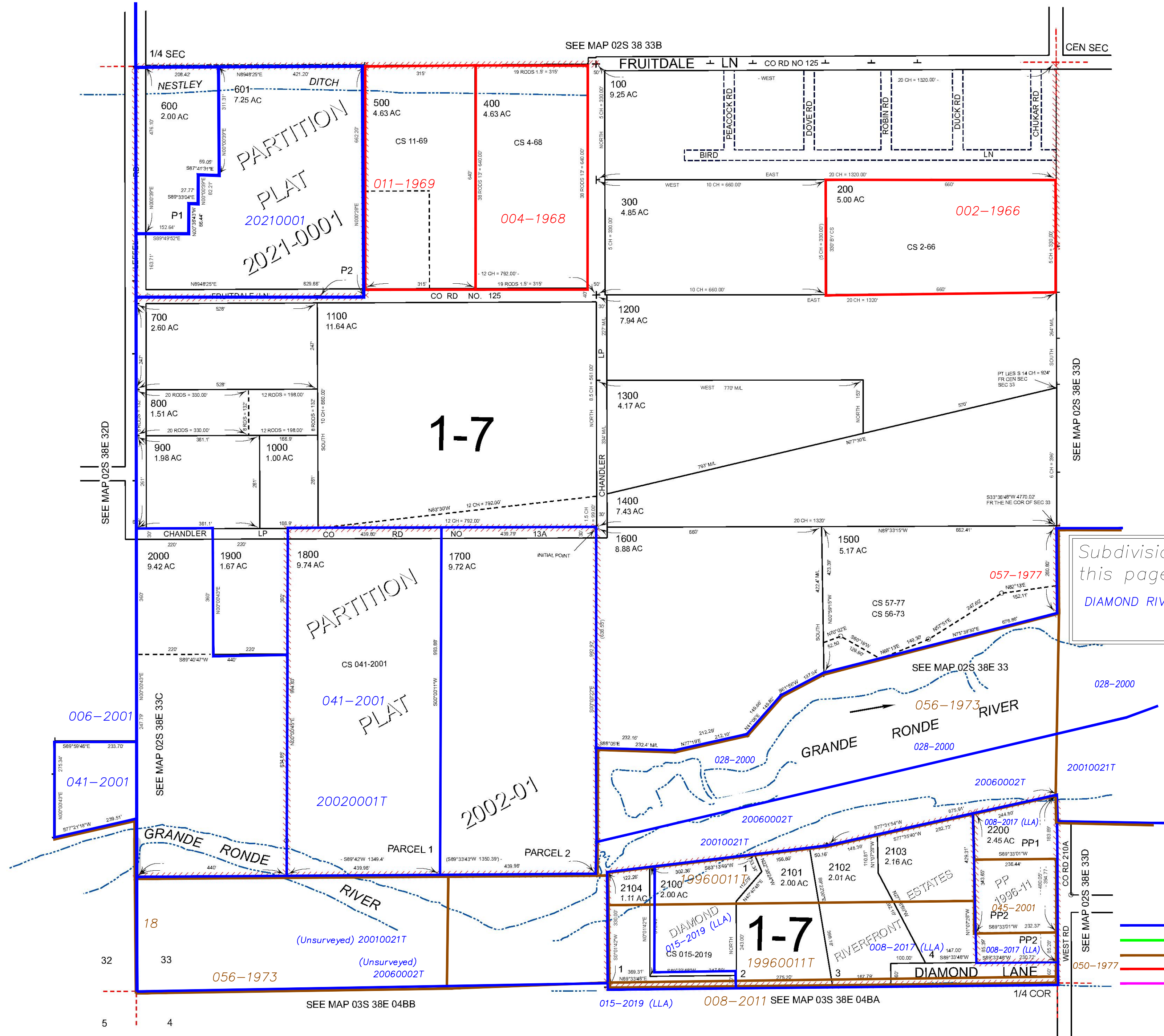


THIS MAP WAS PREPARED FOR ASSESSMENT PURPOSE ONLY



S.W. 1/4 SEC. 33 T.2S. R.38E. W.M.
UNION COUNTY
1" = 200'

02S38E33C



Subdivisions on this page
DIAMOND RIVERFRONT ESTATES

- BGB Survey
- APA Survey
- Survey by Others
- Voelz Survey
- Old Book Survey

Revised: MA
01/19/2021

02S38E33C