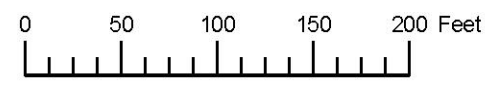


THIS MAP WAS PREPARED FOR ASSESSMENT PURPOSE ONLY



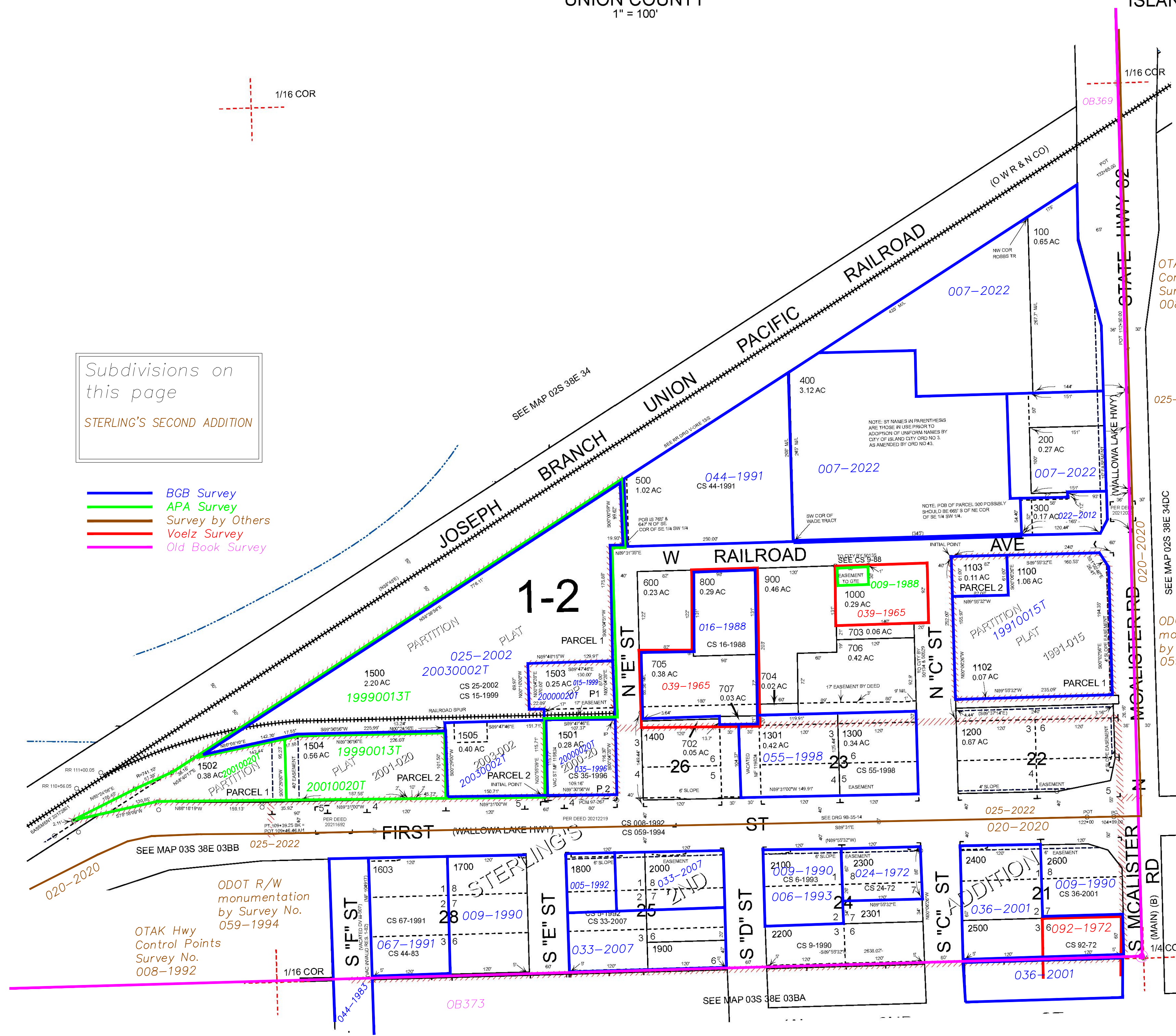
S.E. 1/4 S.W. 1/4 SEC. 34 T.2S. R.38E. W.M.
UNION COUNTY
1" = 100'

02S38E34CD
ISLAND CITY

- Cancelled
- 700
- 708
- 709
- 1101
- 1201
- 1500A1
- 1500A3
- 1500A4
- 1502A1
- 1505A1
- 1600
- 1601
- 1602
- 2700
- 2800
- 2800M1

Subdivisions on this page
STERLING'S SECOND ADDITION

- BGB Survey
- APA Survey
- Survey by Others
- Voelz Survey
- Old Book Survey



OTAK Hwy Control Points Survey No. 008-1992

025-2022

SEE MAP 02S 38E 34DC

ODOT R/W monumentation by Survey No. 059-1994

ODOT R/W monumentation by Survey No. 059-1994
OTAK Hwy Control Points Survey No. 008-1992

Revised: MA 10/07/2021

ISLAND CITY
02S38E34CD