

THIS MAP WAS PREPARED FOR ASSESSMENT PURPOSE ONLY

S.W.1/4 S.E. 1/4 SEC.34 T.2S. R.38E. W.M.

02S38E34DC

UNION COUNTY

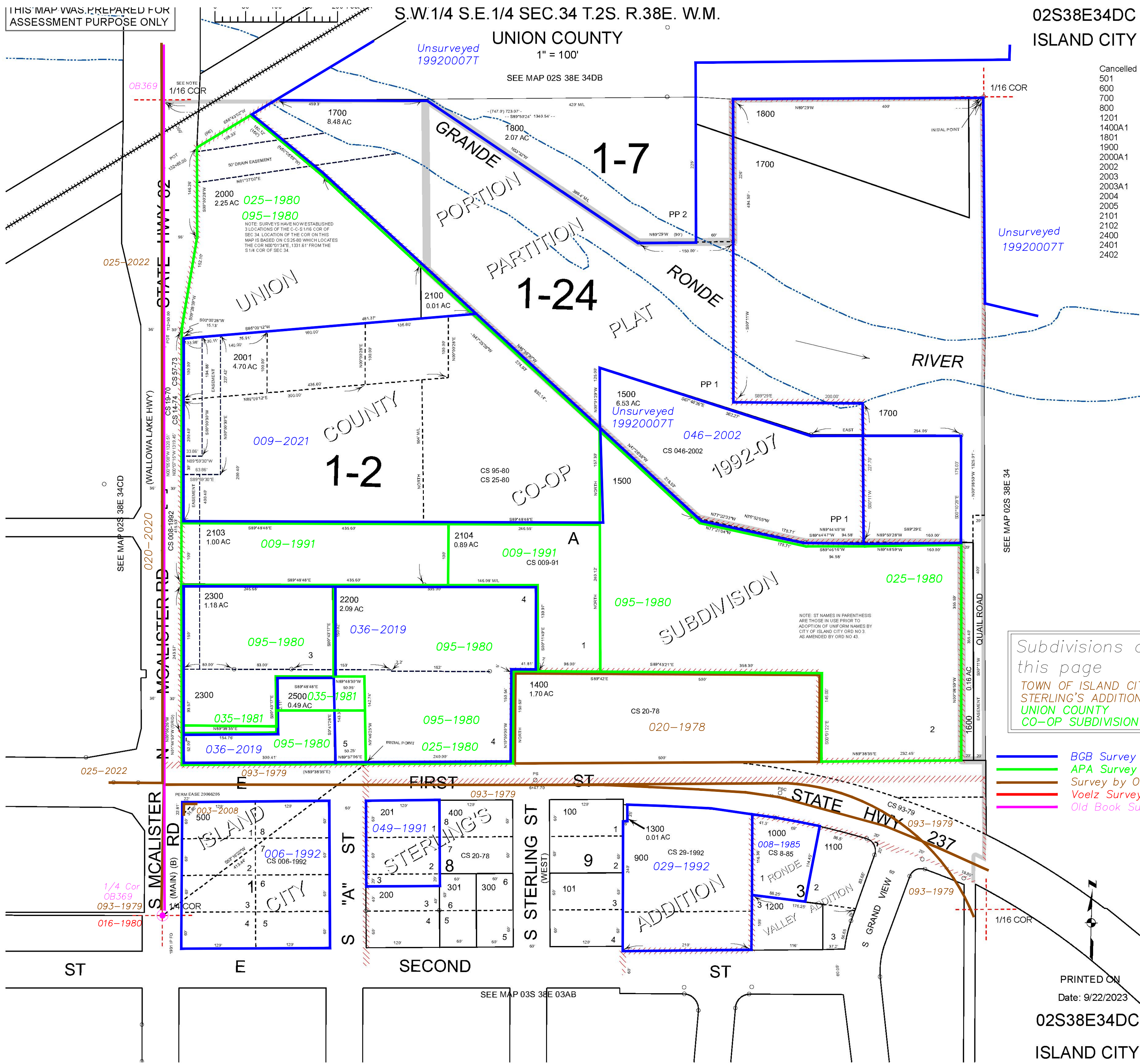
ISLAND CITY

Unsurveyed 19920007T

1" = 100'

SEE MAP 02S 38E 34DB

- Cancelled
- 501
- 600
- 700
- 800
- 1201
- 1400A1
- 1801
- 1900
- 2000A1
- 2002
- 2003
- 2003A1
- 2004
- 2005
- 2101
- 2102
- 2400
- 2401
- 2402



Subdivisions on this page
 TOWN OF ISLAND CITY
 STERLING'S ADDITION
 UNION COUNTY
 CO-OP SUBDIVISION

- BCB Survey
- APA Survey
- Survey by Others
- Voelz Survey
- Old Book Survey

PRINTED ON
 Date: 9/22/2023

02S38E34DC

ISLAND CITY