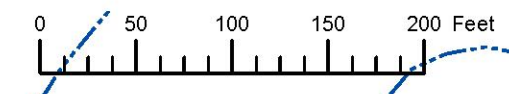


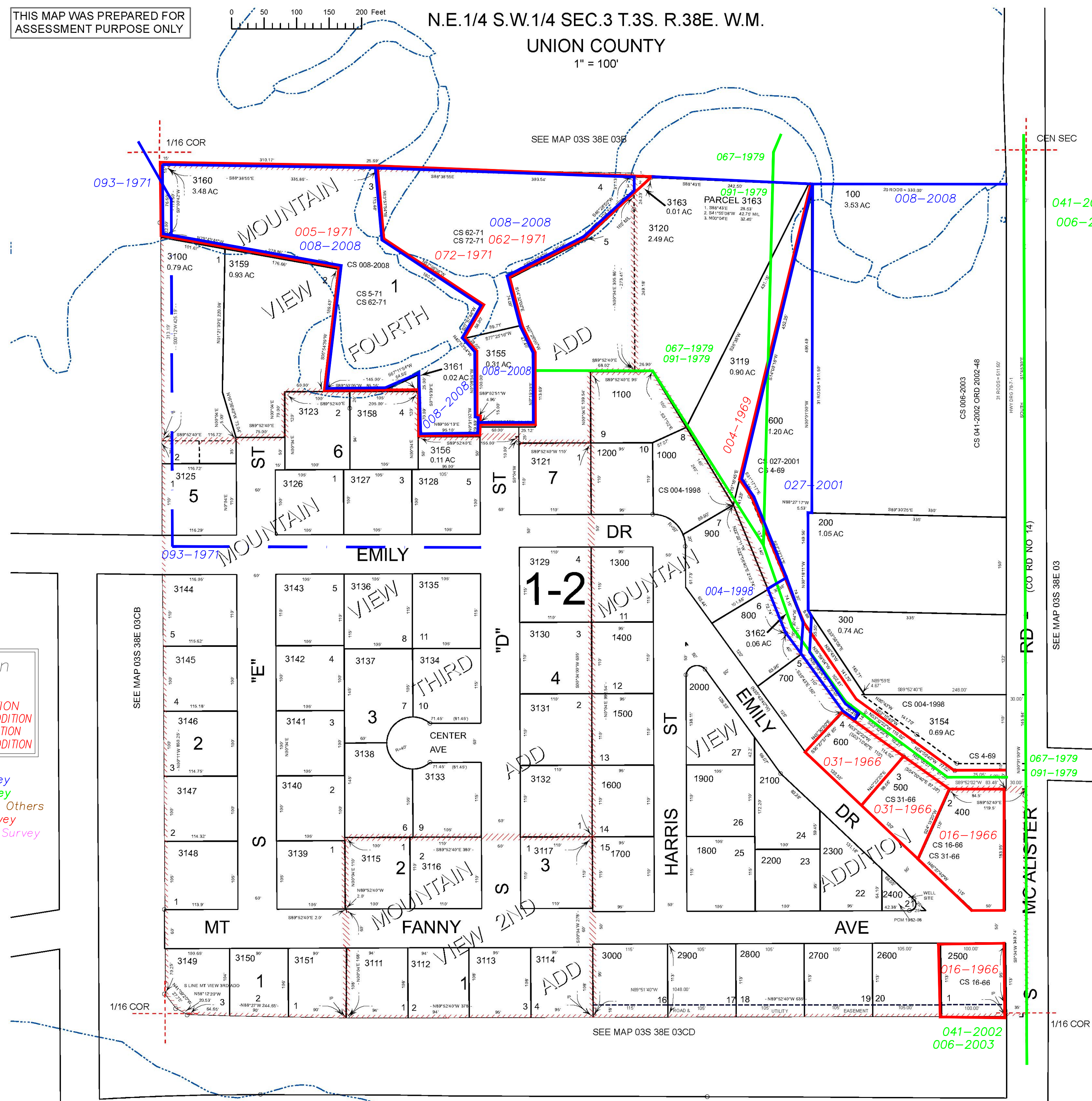
THIS MAP WAS PREPARED FOR ASSESSMENT PURPOSE ONLY



N.E. 1/4 S.W. 1/4 SEC. 3 T. 3S. R. 38E. W.M.
UNION COUNTY
1" = 100'

03S38E03CA
ISLAND CITY

Cancelled
100U1-U6
3101 THRU
3110
3118
3122
3124
3152
3157



Subdivisions on this page
MOUNTAIN VIEW ADDITION
MOUNTAIN VIEW SECOND ADDITION
MOUNTAIN VIEW THIRD ADDITION
MOUNTAIN VIEW FOURTH ADDITION

- BGB Survey
- APA Survey
- Survey by Others
- Voelz Survey
- Old Book Survey

041-2002
006-2003

067-1979
091-1979

041-2002
006-2003



PRINTED ON
Date: 8/7/2023

03S38E03CA
ISLAND CITY