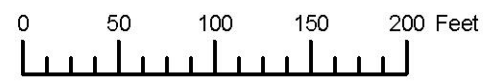


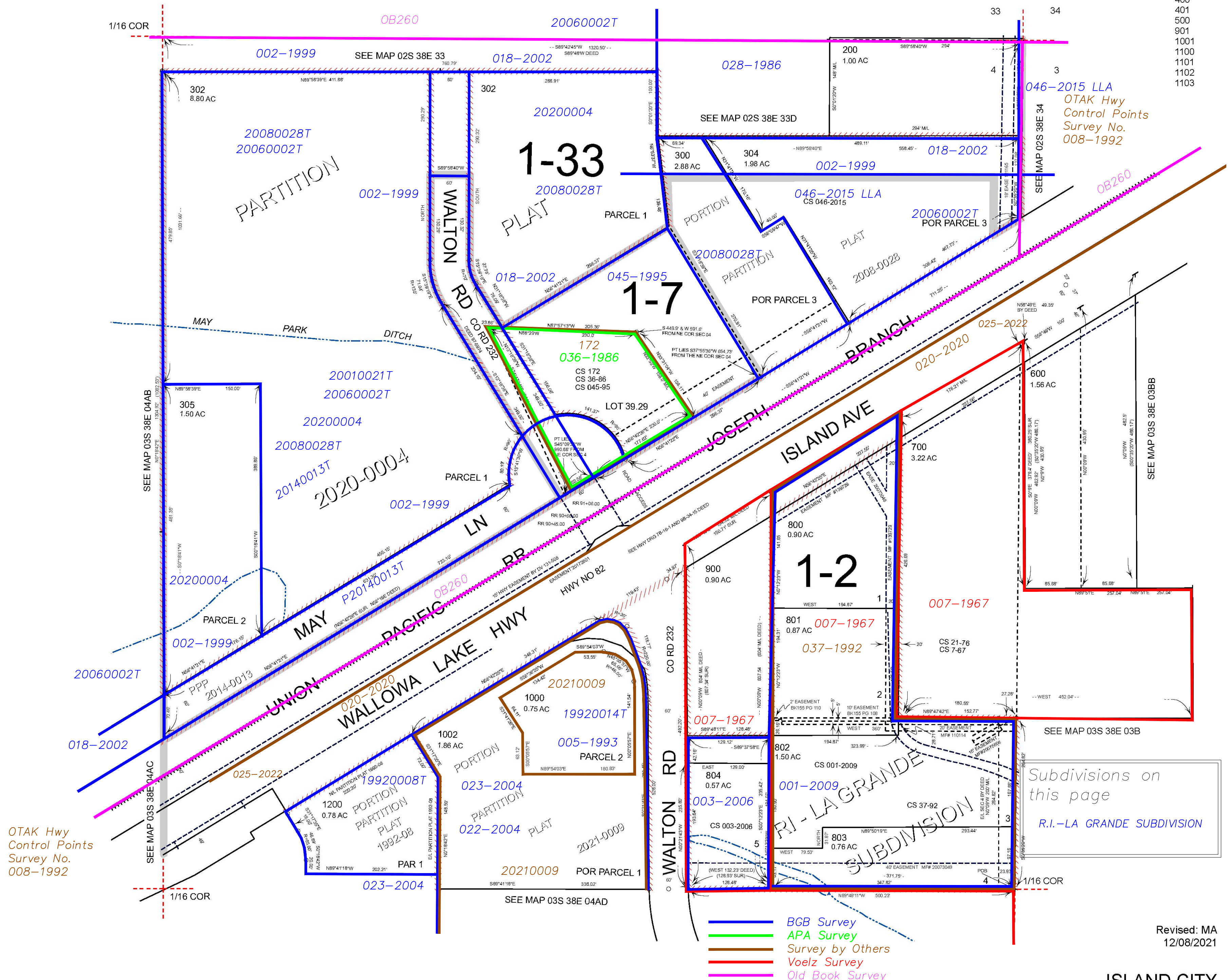
THIS MAP WAS PREPARED FOR ASSESSMENT PURPOSE ONLY



N.E. 1/4 N.E. 1/4 SEC. 4 T. 3S. R. 38E. W.M.
UNION COUNTY
1" = 100'

03S38E04AA
ISLAND CITY

Cancelled
100
301
303
400
401
500
901
1001
1100
1101
1102
1103



OTAK Hwy Control Points Survey No. 008-1992

Subdivisions on this page
R.I.-LA GRANDE SUBDIVISION

- BGB Survey
- APA Survey
- Survey by Others
- Voelz Survey
- Old Book Survey

Revised: MA
12/08/2021

ISLAND CITY
03S38E04AA