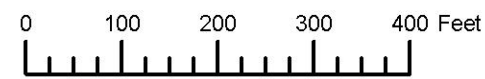
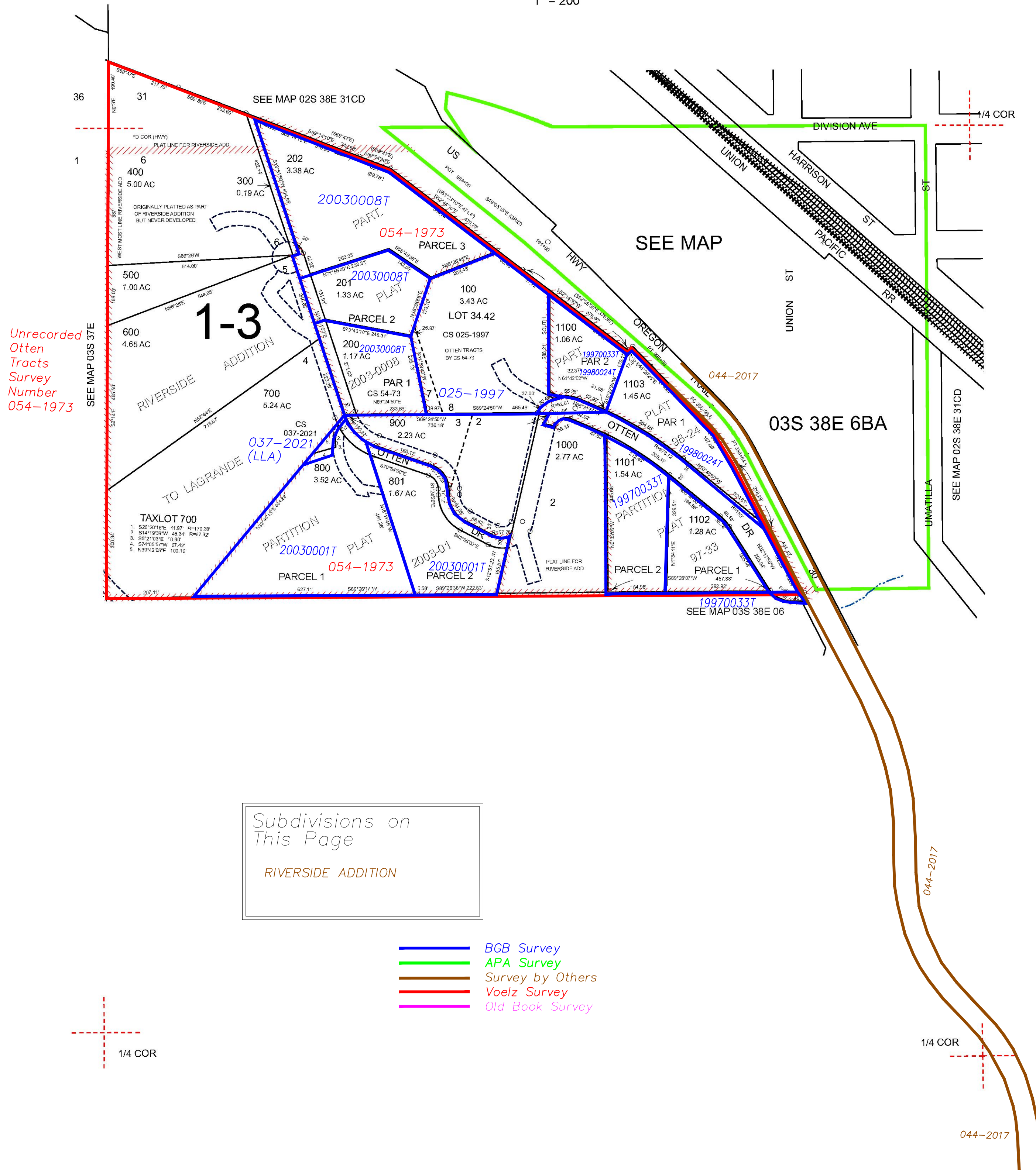


THIS MAP WAS PREPARED FOR ASSESSMENT PURPOSE ONLY



N.W. 1/4 SEC. 6 T. 3S. R. 38E. W.M.
UNION COUNTY
1" = 200'

03S38E06B
& INDEX



Subdivisions on This Page

RIVERSIDE ADDITION

- BGB Survey
- APA Survey
- Survey by Others
- Voelz Survey
- Old Book Survey

Revised: MA
12/07/2021

& INDEX
03S38E06B