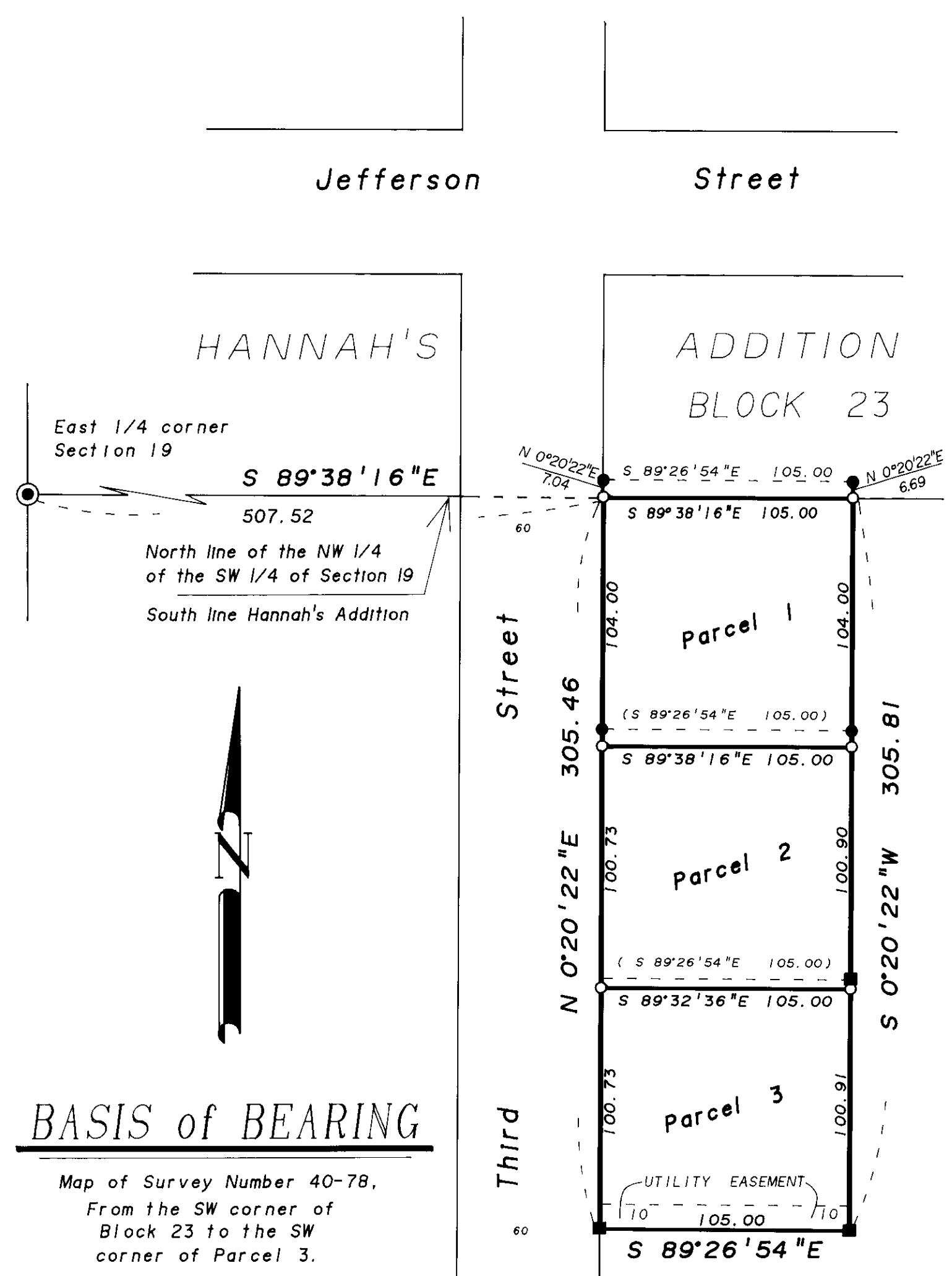


MICROFILM 138513
 PLAT CASE NO A-292

MINOR PARTITION PLAT No. 1991-012

Situated in the NW 1/4 of the SW 1/4 of Section 19, T 4 S, R 40 E, WM.



DEDICATIONS

Know all people by these presents that Jack W. Carr and Arlene Carr, husband and wife are the owners of the land represented on the annexed map, and more particularly described in the accompanying Surveyor's Certificate, and has caused the same to be partitioned and surveyed into parcels as shown on the annexed map.

Jack W. Carr Arlene Carr
 Jack W. Carr Arlene Carr

ACKNOWLEDGEMENTS

State of Oregon
 SS
 County of Union

Know all these people by these presents, on this 27th day of AUGUST, 1991, before me a Notary Public in and for said state and county, personally appeared Jack W. Carr and Arlene Carr, husband and wife, who being duly sworn did say that they are the identical persons named in the foregoing instrument, and that said instrument was executed freely and voluntarily.

Notary Public for the State of Oregon
 My commission expires: 7-21-92

Rick G. Robinson
 RICK G. ROBINSON
 NOTARY PUBLIC - OREGON
 My Commission Expires: 7-21-92

SURVEYOR'S STATEMENT

I, Duane I Griffith, being first duly sworn, hereby, depose and say that I have correctly surveyed and marked with proper monuments, the land represented on the attached minor partition map, the boundaries being described as follows:

A parcel of land in the NW 1/4 of the SW 1/4 of Section 19, T 4 S, R 40 E, Willamette Meridian, more particularly described as follows:

Beginning at a point on the East line of Third Street, said point being the SW corner of Block 23, Hannah's Addition, said point also being S 89°38'16"E 507.52 feet, from the West 1/4 corner of said Section 19.

Thence; S 0°20'22"W, along the East line of said Third Street, 305.46 feet,
 Thence; S 89°26'54"E, 105.00 feet,
 Thence; N 0°20'22"E, 305.81 feet,
 Thence; N 89°38'16"W, 105.00 feet to the point of beginning.

Duane I Griffith
 Duane I Griffith, OPLS 644
 BAGETT-GRIFFITH & ASSOCIATES
 2006 Adams Avenue
 LaGrande, Oregon 97850

Subscribed and sworn to before me this 5th day of SEPTEMBER 1991.

Rick G. Robinson
 RICK G. ROBINSON
 NOTARY PUBLIC - OREGON
 My Commission Expires: 7-21-92

APPROVALS

State of Oregon
 SS
 County of Union

I do hereby certify that the attached partition plat was received for record on the 5th day of SEPT, 1991, at 2:30 o'clock P.M., and recorded as Partition Plat No. 1991-012 Union County records.

R. VELLIE DOUGLE HIGBERT
 Union County Clerk
 by S. Nelson, Esq.

UNION COUNTY SURVEYOR

Approved this 21st day of AUGUST, 1991.

Union County Surveyor

by Jack W. Burris
 Willowa County Surveyor

CITY OF UNION PLANNING COMMISSION

Approved this 4th day of September, 1991.

Pauline Wise
 City of Union Planning Commission Chair

NARRATIVE

This survey was requested by Jack Carr to partition the parcel as shown. In 1978 I surveyed and pinned this area, Map of Survey No. 40-78. In 1989 I made a study to determine the position of the West line of Section 19, Map of Survey No. 29-89. I determined the position of the West 1/4 corner as shown on said Map of Survey No. 29-89; The SW corner of Hannah's Addition and the 1/4 corner are not in the same. The South line of Hannah's Addition is South of the line I used in 1978. This results in the relocation of the North line of this parcel as shown. I found most of the pins I set in 1978. I set additional pins to reposition the parcels as shown hereon.

REGISTERED
 PROFESSIONAL
 LAND SURVEYOR
Duane I Griffith
 OREGON
 JULY 10, 1984
 DUANE I. GRIFFITH
 644

BASIS of BEARING

Map of Survey Number 40-78,
 From the SW corner of
 Block 23 to the SW
 corner of Parcel 3.

REFERENCE MATERIAL

Map of Survey No. 40-78
 Map of Survey No. 29-89

WATER RIGHTS STATEMENT

I find no water rights
 appurtenant to this parcel.

LEGEND

- Set 5/8" X 30" Iron pin with plastic cap marked "BGA SURVEY MARKER"
- Found monument of record, a 5/8" Iron pin with plastic cap.
- Found 2" Iron fence corner post set in concrete.
- - - Easement line.