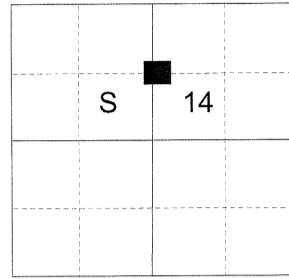


CERTIFIED RECORD OF LAND CORNER MONUMENTATION

HISTORY OF ORIGINAL CORNER ESTABLISHED:

None.

T 1 N R 38 E K-19



DESCRIPTION OF CORNER EVIDENCE FOUND:

None.

SEE SURVEY NUMBER 008-2019

DESCRIPTION OF MONUMENT AND ACCESSORIES I ESTABLISHED TO MONUMENT THE ORIGINAL LOCATION OF THIS CORNER:

At the position by survey I set a 5/8"x30" iron pin 25" in the ground with 2 1/2" aluminum cap marked as shown below, from which:

NEW BEARING TREES:

An 8" Douglas Fir bears North 53° East a dist. of 37.55 ft., marked CN 1/16 S14 BT.
A 9" Ponderosa Pine bears South 33° West a dist. of 36.20 ft., marked CN 1/16 S14 BT.

Set steel fence post approx. 3" South.

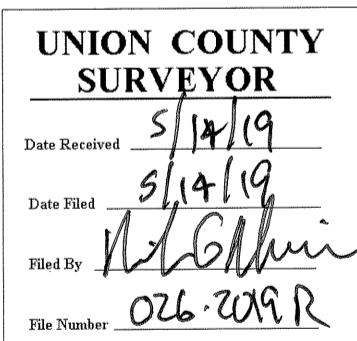
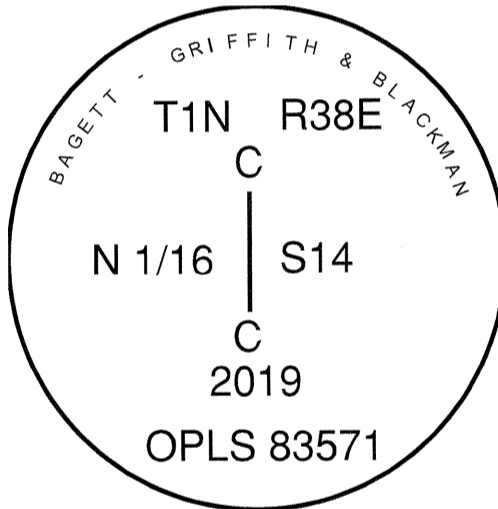
East/West road falls South of monument approx. 150 ft..

I hereby certify that the corner was monumented on May 9, 2019.

Witness: Kyle A. Tucker.



Renewal Date: June 30, 2019



I used a steel tape and magnetic compass in the establishment of the new accessories. I used 13° East declination, the distances are to a 60d spike driven into the right side of the root crown of the bearing trees. The bearings are to a brass washer marked OPLS 83571 attached to the BT blaze of the new bearing trees.