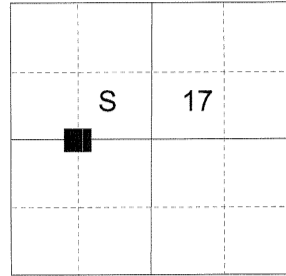


CERTIFIED RECORD OF LAND CORNER MONUMENTATION

HISTORY OF ORIGINAL CORNER ESTABLISHED:

Corner not previously established.

T 1 N R 38 E L-06



DESCRIPTION OF CORNER EVIDENCE FOUND:

None.

SEE SURVEY NUMBER 031-2018

DESCRIPTION OF MONUMENT AND ACCESSORIES I ESTABLISHED TO PERPETUATE THE ORIGINAL LOCATION OF THIS CORNER:

At position determined by survey, I set a 5/8"x30" iron pin with a 2 1/2" aluminum cap marked as shown below, 28" in the ground, from which:

NEW BEARING TREES:

A 13" White Fir bears North 5° East a dist. of 12.75 ft., marked "CW 1/16 S17 BT".

A 12" Ponderosa Pine bears South 3° East a dist. of 3.55 ft., marked "CW 1/16 S17 BT".

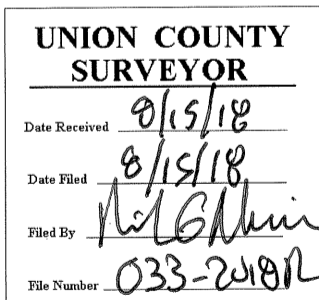
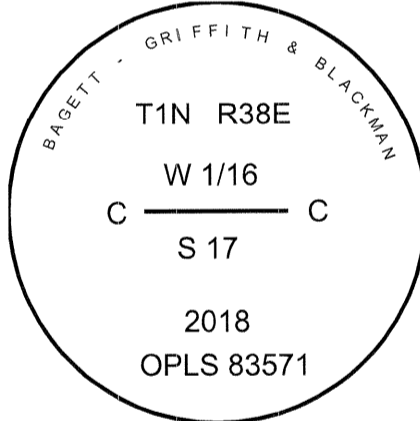
Set a steel post approximately 1 ft. North of the monument.

I hereby certify that the corner was perpetuated on July 19, 2018.

Witness: Kyle A. Tucker, Ryan Skeen



Renewal Date: June 30, 2019



I used a steel tape and magnetic compass in the establishment of the new accessories. I used 13° East declination, the distances are to a 60d spike driven into the right side of the root crown of the bearing trees. A brass washer marked OPLS 83571 is attached to the BT blaze of the new bearing trees.