

HORIZONTAL CONTROL DATA

UNION COUNTY, OREGON
OREGON STATE PLANE, NORTH ZONE (3601)

STA. NAME: 9334

CORNER COMMON TO: 4,5,32 & 33

GEODETIC COOR: NAD 83(91)

TWP.1 & 2 N. RGE.39 E.

LAT: 45°36'06.74971" N

DATE SET: OCT. 1993

LONG: 117°57'10.01482" W

SURVEYOR: WALTER L. CASWELL
PLS 737

SP. COOR: NAD 83(91)

FIRM: EAGLE GPS SURVEY CORP
13545 NW SCIENCE PARK DR
PORTLAND, OR. 97229
(503) 643-1073

N: 715808.063 INT.FT.

E: 8853930.756 INT.FT.

THETA: 1°48'23.225"

TYPE: GPS

SCALE FACTOR: 0.999923134

ORDER: SECOND CLASS: 1

ELEV: 2899.13 US.FT.

ELEV. DATUM: NGVD 29

DIRECTIONS "TO REACH": FROM S 8TH AVE. AND DIVISION STREET IN ELGIN GO WEST 0.1 MILES TO N. 10TH AVE. TURN RIGHT AND GO NORTH 1/2 MILE TO AN INTERSECTION WITH HARTFORD STREET. TURN LEFT AND GO WEST 0.6 MILES TO AN INTERSECTION WITH A MIDDLE ROAD GOING TO THE NORTH ONLY. TURN RIGHT AND GO NORTH ON MIDDLE ROAD FOR 2.1 MILES TO GORDON CREEK ROAD. TURN WEST AND GO 0.6 MILES TO A FORK IN THE ROAD. BEAR LEFT AND CONTINUE ON GORDON CREEK ROAD (DARR ROAD TAKES OFF TO THE RIGHT), FOR ANOTHER HALF MILE TO VALLEY VIEW ROAD, TO THE LEFT. TURN LEFT ONTO VALLEY VIEW ROAD AND GO 0.4 MILES TO A LOGGING ROAD TO THE LEFT, JUST SOUTH OF AN EAST-WEST FENCE-LINE CROSSING THE ROAD. THE CORNER IS IN THE CENTERLINE OF THE ROAD, DIRECTLY IN LINE WITH THE FENCE GOING OFF TO THE WEST. THERE IS A LARGE SPIKE IN THE ROAD AT THE CORNER.

REGISTERED
PROFESSIONAL
LAND SURVEYOR

Walter L. Caswell
OREGON
JULY 8, 1966
WALTER L. CASWELL
737

EXPIRES 12/31/95

1 METER = 3.280833333333... U.S. FEET = 39.37 INCHES
1 METER = 3.280839895 INT'L FEET OR 1 INCH = 2.54 CM.
TO CALCULATE ELEVATION FACTOR (IN THE NORTH AMERICAN CONTINENT)
DIVIDE 20,906,000 BY (20,906,000 + ELLIPSOID ELEV. IN FEET)
SHEET 32 OF 37

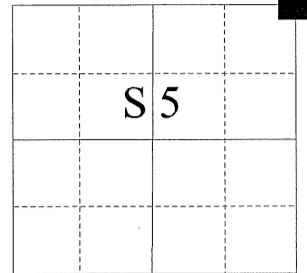
UNION COUNTY SURVEYOR

CERTIFIED RECORD OF LAND CORNER MONUMENTATION

HISTORY OF ORIGINAL CORNER ESTABLISHMENT:

Corner originally established by Timothy W. Davenport under GLO Contract No. 102, dated July 20, 1863, GLO Record States: Set post for corner to sections. 4, 5, 32, and 33, made mound of earth and buried charred stakes as per instructions.

T1 N R 39 E A-09



Union County Survey Numbers 26-70, 23-80, 1-81, 44-84, 017-1994 and 032-1997 all use the position of a Railroad Spike as being the Section Corner.

DESCRIPTION OF CORNER EVIDENCE FOUND:

Found Railroad Spike at corner position, from which:

A 1" Pipe with 2" Brass Cap bears North 87° West, a distance of 31.00 feet, marked RP SEC COR 31 FT, in a fence corner.

DESCRIPTION OF MONUMENT AND ACCESSORIES I ESTABLISHED TO PERPETUATE THE ORIGINAL LOCATION OF THIS CORNER:

At the position of the railroad spike, I set a 2½" brass cap on a 5/8"x30" "copper clad" iron pin, 34 inches in the ground, in a water valve box, with brass cap marked as shown:

NEW BEARING OBJECTS:

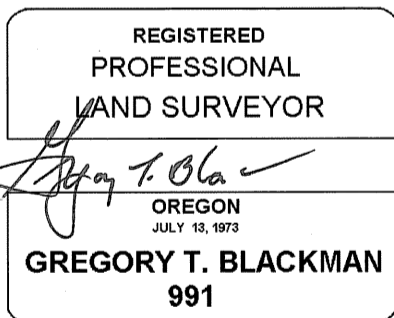
A 5/8" X 30" Rebar with 1 ½" Aluminum cap bears North 61° East, a distance of 27.80 feet, marked UNION COUNTY SURVEYOR NE RP, in a fence line.

A 5/8" X 30" Rebar with 1 ½" Aluminum cap bears South 72° East, a distance of 24.05 feet, marked UNION COUNTY SURVEYOR SE RP, in a fence corner.

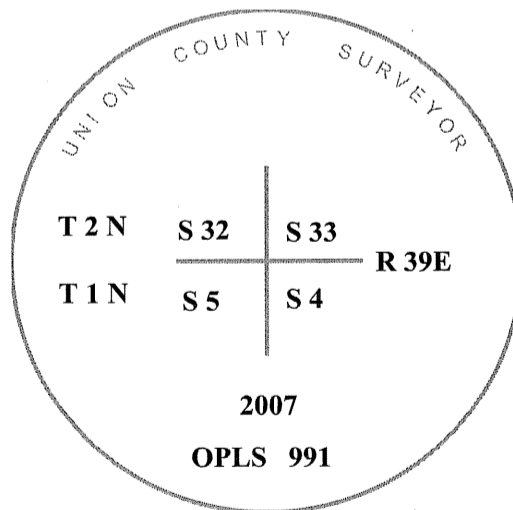
A 5/8" X 30" Rebar with 1 ½" Aluminum cap bears North 47° West, a distance of 40.85 feet, marked UNION COUNTY SURVEYOR NW RP, in a fence line.

Corner set 4/24/2007. Reference monuments set December 11, 2007.

Witness: Leo Castillo



Renewal Date: Dec. 31, 2007



UNION COUNTY SURVEYOR

Date Received 12/11/07

Date Filed 12/12/07

Filed By R. Robinson, Deputy

File Number 030-2007 R

I use a magnetic compass and steel tape in establishment of the accessories. Distances are to the center of the aluminum cap. Magnetic Declination used was 18° East.

HORIZONTAL CONTROL DATA

UNION COUNTY, OREGON

OREGON STATE PLANE, NORTH ZONE (3601)

STA NAME: 200720

SECTION CORNER COMMON TO SECTIONS: 32, 33, 4 and 5

TWP. 1 N. RGE. 39 E.
& 2

GEODETIC COORD: NAD 83(91)

DATE TIED: April 24, 2007

LAT: 45 ° 36 ' 6.74923 " N

SURVEYOR: RICK G. ROBINSON
OPLS 2219

LONG: 117 ° 57 ' 10.01503 " W

FIRM: BAGETT, GRIFFITH, & BLACKMAN
2006 ADAMS AVENUE
LAGRANDE, OR 97850
(541) 963-6092

SP. COOR: NAD 83(91)

N: 715808.014 INT FT.

E: 8853930.743 INT FT.

TYPE: GPS

THETA: 1 ° 48 ' 23.2251148 "

ORDER: SECOND CLASS: 1

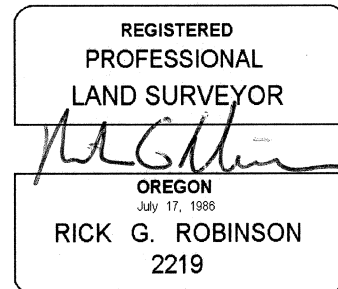
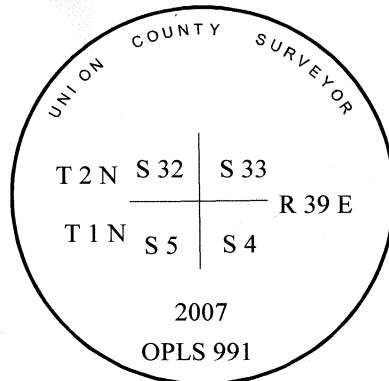
SCALE FACTOR: 0.9999231343

ELEV: 2903.40 US FT.

ELEV: DATUM: NGVD 29

COMMENTS:

Corner is 2 1/2" brass cap on 5/8"x30" copper clad" iron pin set in a water valve box marked as shown:



Renewal Date: December 31, 2008

1 METER = 3.2808333333... US FEET = 39.37 INCHES

1 METER = 3.280839895 INT'L FEET OR 1 INCH = 2.54 CM

TO CALCULATE ELEVATION FACTOR (IN THE NORTH AMERICAN CONTINENT)

DIVIDE 20,906,000 BY (20,906,000 + ELLIPSOID ELEV. IN FEET)