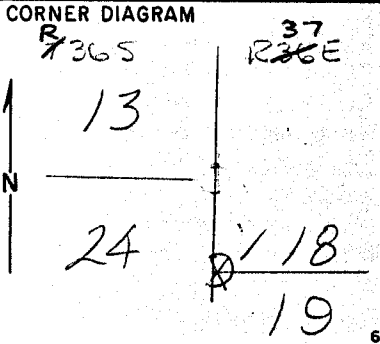


Index File No. N-1 CORNER RECORD (SEARCH) Tract or Survey No. _____ Cor. No. SE COR. SEC. 18
 T 25 R. 37E R.D. La Grande County Union
 Merid. Will N.F. W-W State Oregon



DESCRIBE CORNER MONUMENT FOUND
None

DESCRIBE BEARING TREES OR OTHER OFFICIAL ACCESSORIES FOUND
 Found Fir snag 30" x 15' high. Scribes visible, old section tag on tree.
 Found Fir stump with no scribe but relates to GLO notes. It is marked with B.T. tag & warning sign.

PHOTO IDENTIFICATION DATA
 Photo No. ENW 2-204
 Filed At. _____
 Object Ident. _____
 Ident. By _____
 Signature _____

DESCRIBE CORNER LOCATION RELATIVE TO NEAR-BY FEATURES, ALSO HOW TO REACH CORNER
 Dense virgin timber 100 yds East of ridge top which is open scattered pine. Located in swail. 50' to large opening. Along private road, see photos

PLANE COORDINATE POSITION DATA
 State _____ Zone _____
 X _____
 Y _____
 Estab. By _____
 Agency _____

Signature Alwyn Flowers Title Engr. Division _____ Headquarters La Grande Date 4-73 7100-52 REV. 65 5

UNION COUNTY SURVEYOR
 Date Received _____
 Date Filed 12-17-87
 By G. LANGLITZ, DEPUTY
 File No. 207-87R

N-1

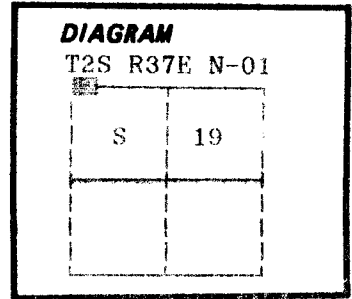
CERTIFIED RECORD OF L CORNER MONUMENTATION

History of original corner establishment:

Corner originally established by Henry Meldrum under GLO contract number 450, dated June 11, 1882. Surveyor General record states:

Set basalt stone 18x10x7 ins. 12 in. in ground for cor to secs 18 and 19 marked with 3 notches on N and S edges, from which:

- A fir 12 in diam bears S68°E 38 lks dist marked R37E S19 BT
- A fir 24 in diam bears N21°E 64 lks dist marked T2S S18 BT
- A tamarack 24 in diam bears N72°W 22 lks dist marked R36E BT



No record of subsequent monumentation found in Union County survey records.

Description of corner evidence found:

Found a stone 17x10x10 inches marked with 3 notches on the North and South faces.

Found a 22 inch diameter Douglas Fir snag N21°E, 64 lks, with scribes visible.

Found no evidence of the original Southeast bearing tree.

Found a 22 inch diameter Western Larch stump N72°W, 22 lks, with scribes visible.

See map of survey dated November, 1989.

Description of monument and accessories established to perpetuate the

original location of this corner: From the position of the found original corner stone, West 2.33 feet to a point on the Range line, I set a 2½" x 30" aluminum pipe with aluminum cap marked as shown, 30 inches in the ground, from which:

New Bearing Trees:

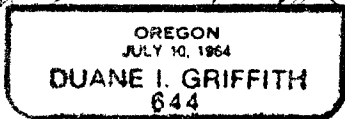
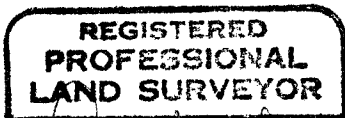
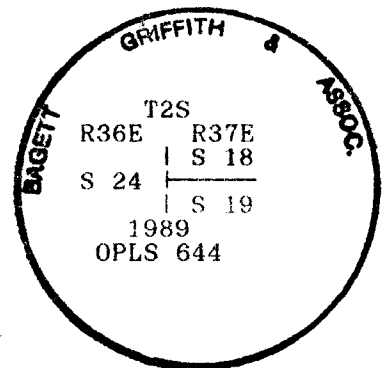
- A 10 inch diameter Western Larch bears N84°E, 59.06 feet marked T2S R37E S18 BT
- A 14 inch diameter Douglas Fir bears S27°E, 20.42 feet marked T2S R37E S19 BT
- A 11 inch diameter Ponderosa Pine bears N65°E, 55.58 feet marked X BT
- A 10 inch diameter White Fir bears S33°E, 17.31 feet marked X BT

Set a steel fencepost approximately 3 feet North with land survey monument sign attached. Painted a 6 inch red band around all BTs and attached bearing tree and land survey monument signs.

Marked the original corner stone AM and buried the stone North and alongside of monument.

I hereby certify that the above corner point was perpetuated as hereon described on October 25, 1989.

Witnesses: Rick Robinson and Jeff Petersen



I used a steel tape and magnetic compass in the establishment of new accessories. I used 17° East magnetic declination and the distances are to a 50d spike driven in the right side of the root crown. I attached a brass washer marked OPLS 644 to the BT blaze.

Office of..... County of.....

State of..... I hereby certify that the within instrument was filed in this office for record on the..... day of..... 19.....

UNION COUNTY, OR
SURVEYOR

By R. Robinson, Deputy
(COUNTY OFFICIAL) (DEPUTY)

Date Received 12-27-89
Date Filed 12-27-89
File No. 257-092