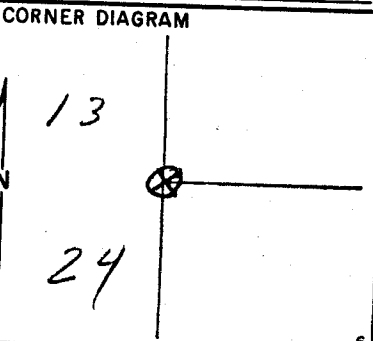


Index N-25  
 File No. N-2525  
 T 3S R. 40E R.D. UNION County UNION Tract or Survey No. \_\_\_\_\_ Cor. No. \_\_\_\_\_  
 Merid. N-M N.F. W-W State OK



DESCRIBE CORNER MONUMENT FOUND  
STONE 3X8X24 AND SMALL STONE MOUND  
14" ABOVE GROUND CONDITION OF STONE  
FAIR 3 NOTCHES ON SOUTH POSSIBLE  
SON EAST SIDE

DESCRIBE BEARING TREES OR OTHER OFFICIAL ACCESSORIES FOUND  
36" PP STUMP COMPLETELY ROTTED OUT  
FITS NOTCHES 18" FIT SNAPE 12" HIGH BLAZE  
GROWN OVER CENTER ROTTED OUT I THINK  
IT WOULD BE IMPOSSIBLE TO FIND ANY  
SCRIBING. 3 WAY FENCE 20" SOUTH

DESCRIBE CORNER LOCATION RELATIVE TO NEAR-BY FEATURES, ALSO HOW TO REACH CORNER  
I NAILED BEAR. TREE SIGN ON WHAT WAS LEFT  
OF 36" STUMP TRAIL IS A SECTION  
BOARD ON MAIN RD FOLLOW FENCE N. TO  
SEC. COR

PHOTO IDENTIFICATION DATA  
 Photo No. 7110/64  
 Filed At. ENW 5-120  
 Object Ident. \_\_\_\_\_  
 Ident. By \_\_\_\_\_  
 Signature \_\_\_\_\_

PLANE COORDINATE POSITION DATA  
 State \_\_\_\_\_ Zone \_\_\_\_\_  
 X \_\_\_\_\_  
 Y \_\_\_\_\_  
 Estab. By \_\_\_\_\_  
 Agency \_\_\_\_\_

Signature E A Holland Title \_\_\_\_\_ Division \_\_\_\_\_ Headquarters \_\_\_\_\_ Date 6/19/70 7100-52 REV. 65

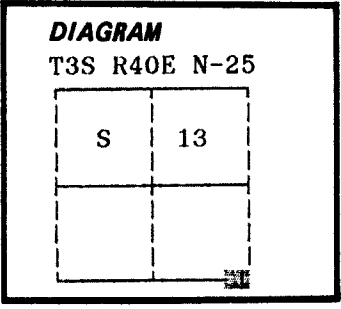
**UNION COUNTY SURVEYOR**  
 Date Received \_\_\_\_\_  
 Date Filed 12-21-87  
 By G. LANGLITZ, Deputy  
 File No. 274-87R

N-25

**CERTIFIED RECORD OF LAND CORNER MONUMENTATION**

**History of original corner establishment:**

Corner originally established by David T. Thompson under GLO contract number 103, dated September 3, 1863. Surveyor General record states:  
 Set post for cor to Secs 18, 19, 13 & 24 from which;  
 A fir 18 in diam bears N68°W 34 lks dist  
 A pine 8 in diam bears N80°E 41 lks dist  
 A pine 18 in diam bears S57°E 41 lks dist  
 A pine 36 in diam bears S40°W 5 lks dist



Corner remonumented by Alonzo Gesner under GLO contract number 683, dated June 7, 1898. Surveyor General record states:  
 I reestablish as follows; Set basalt stone 20x8x4 in 15 inches in the ground marked with 3 notches on the N and S sides from which:  
 A pine 40 in diam bears S40°W 5 lks dist marked T3S R40E S24 BT  
 A pine 8 in diam bears N80°E 41 lks dist marked T3S R41E S18 BT  
 The other BT had been destroyed by forest fires. These trees agree with the statement of the U.S Surveyor General. I obliterated the marks on the tree in Sec 18 and marked;  
 A fir 8 in diam bears N47°30'W 40 lks dist marked T3S R40E S13 BT  
 No record of subsequent monumentation found in Union County survey records.

**Description of corner evidence found:**

- Found stone 19x8x3 inches marked with 3 notches on North and South edges, in a small mound of stone.
- Found a 40 inch diameter Ponderosa Pine stump, S40°W, 5 lks, badly rotted with no scribes visible.
- Found a 18 inch diameter Douglas Fir N47°30'W, 40 lks, dead, down and rotted with scribes visible.
- Found no remains of the other bearing trees.
- Distance to the original bearing trees are to the face of the blaze (estimated as if trees were standing).
- See map of survey dated August, 1988.

**UNION COUNTY SURVEYOR**

---

Date Received 9-15-88

Date Filed 9-15-88

By G. LANGLITZ DEPUTY

File No. 119-88 R

**Description of monument and accessories I established to perpetuate the original location of this corner:**

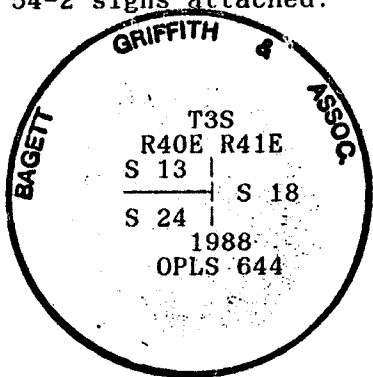
In place of the found original corner stone, I set a 2½" x 30" aluminum pipe with aluminum cap marked as shown, 30 inches in the ground, from which:

**New BTs:**  
 A 10 inch diameter Western Larch bears S89°W, 47.47 feet marked T3S R40E S24 BT  
 A 16 inch diameter Western Larch bears N10°W, 89.39 feet marked T3S R40E S13 BT

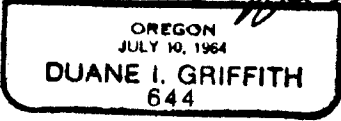
- Raised a small mound of stone around monument.
- Painted a 6 inch red band around all BTs and attached 54-3 and 54-9 signs.
- Set a steel fencepost approximately 5 feet North with 54-9 and 54-2 signs attached.
- Buried the original corner stone West and alongside of monument.

I hereby certify that the above corner point was perpetuated as hereon described on July 29, 1988.

Witnesses: Greg Blackman, Rick Robinson and Jeff Petersen



*[Handwritten Signature]*



I used a steel tape and magnetic compass in the establishment of new accessories. I used 18° East magnetic declination and the distances are to a 50d spike driven in the right side of the root crown. I attached a brass washer marked OPLS 644 to the BT blaze.

Office of..... County of.....  
 State of....., I hereby certify that the within instrument was filed in this office for record on the..... day of....., 19.....  
 ..... by .....  
 (COUNTY OFFICIAL) (DEPUTY)