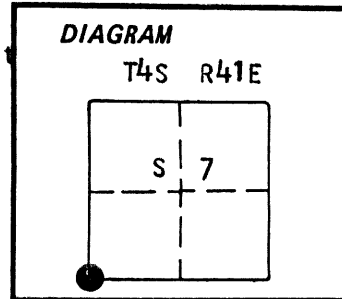


CERTIFIED RECORD OF LAND CORNER MONUMENTATION

History of original corner establishment:
Corner originally established by John H. Stone under GLO contract number 235 dated July 6, 1875. Surveyor General record states:

Set stone 18x8x6 as per instructions for corner to secs 7, 12, 13 and 18



No record of subsequent remonumentation found in county records.

Description of corner evidence found:

NONE

UNION COUNTY SURVEYOR

Date Received 10-20-86
 Date Filed 10-27-86
 By G. LANGLITZ, DEPUTY
 File No. 248-86 R

See map of survey number ³⁰~~29~~-86 filed in the office of the Union County Surveyor

Description of monument and accessories I established to perpetuate the original location of this corner: At the proportionate position I set a 2 1/2'x30" aluminum pipe with aluminum cap marked as shown, 16 inches in the ground and raised a mound of stone with a 3 foot base to top of cap, from which:

A 16 inch Ponderosa Pine bears N 61° E, 13.80 feet, marked T4S R 41E S7 BT.

A 16 inch Ponderosa Pine bears S 43° E, 34.48 feet, marked T4S R41E S18 BT.

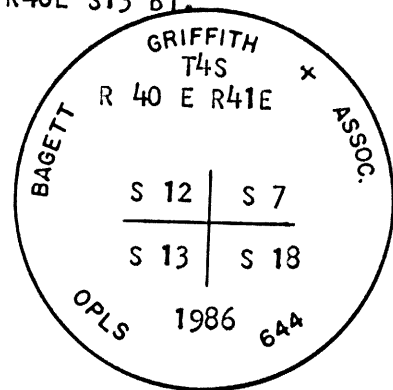
A 10 inch Ponderosa Pine bears S 36° W, 64.24 feet, marked T4S R40E S13 BT.

A 12 inch Ponderosa Pine bears N 59° W, 46.77 feet, marked T4S R40E, S 12 BT.

Set a steel fence post approximately 5 feet North with a 54-9 sign attached.

Corner set : 8/20/86

Witness: Greg Blackman, Rick Robinson



REGISTERED PROFESSIONAL LAND SURVEYOR

Duane I. Griffith
OREGON
JULY 10, 1964
DUANE I. GRIFFITH
644

Brass washer marked OPLS 644 nailed to BT blaze. Used steel tape and magnetic compass with 20° East declination. Distances to the BTs are to a 50d spike set in right side of tree when facing tree, unless otherwise stated.

Office of..... County of.....
 State of....., I hereby certify that the within instrument was filed in this office
 for record on the..... day of....., 19.....
 by
 (COUNTY OFFICIAL) (DEPUTY)

CERTIFIED RECORD OF LAND CORNER MONUMENTATION

HISTORY OF ORIGINAL CORNER ESTABLISHED:

Corner originally established by John H. Stone under GLO contract number 235, dated July 6, 1875. Surveyor General record states:

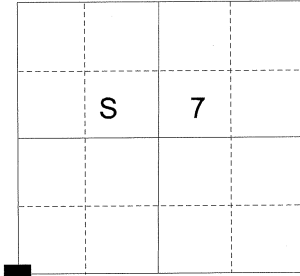
Set stone 18x8x6 as per instructions for corner to secs 13 and 12.

Corner established at proportionate position by Duane Griffith in survey 30-86. Union County Monumentation Record 248-86R states:

At the proportionate position I set a 2 1/2"x30" aluminum pipe with aluminum cap marked as shown, 16 inches in the ground and raised a mound of stone with a 3 foot base to top of cap, from which:

- A 16 inch Ponderosa Pine bears N 61° E, 13.80 feet, marked T4S R41E S7 BT.
- A 16 inch Ponderosa Pine bears S 43° E, 34.48 feet, marked T4S R41E S18 BT.
- A 10 inch Ponderosa Pine bears S 36° W, 62.24 feet, marked T4S R40E S13 BT.
- A 12 inch Ponderosa Pine bears N 59° W, 46.77 feet, marked T4S R40E S12 BT.

T 4 S R 41 E J-01



DESCRIPTION OF CORNER EVIDENCE FOUND:

Found a 2 1/2" aluminum pipe with a 2 1/2" aluminum cap, 4" above ground in collar of stone 2 1/2' diameter, from which:

- A 19" Ponderosa Pine bears N 61° E, a distance of 13.80 feet, alive and vigorous with a healed blaze.
- A stump hole bears S 43° E, a distance of 35 feet.
- A 13" Ponderosa Pine bears S 36° W, a distance of 64.24 feet, alive and vigorous with a healed blaze.
- A 16" Ponderosa Pine bears N 59° W, a distance of 46.77 feet, alive and vigorous with a healed blaze.

DESCRIPTION OF MONUMENT AND ACCESSORIES I ESTABLISHED

TO PERPETUATE THE ORIGINAL LOCATION OF THIS CORNER:

From the aluminum pipe monument,

NEW BEARING OBJECTS:

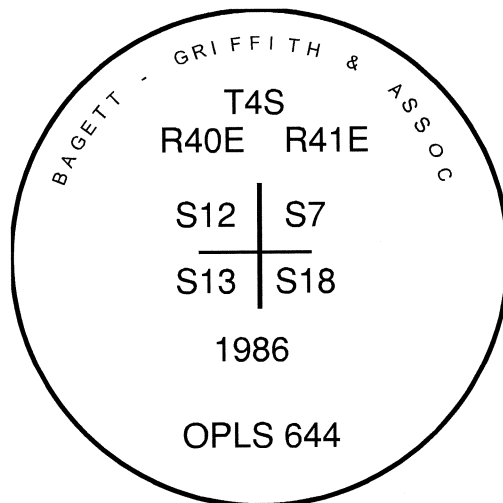
A 7" Ponderosa Pine bears S 5° E, a distance of 37.00 feet, marked T4S R41E S18 BT.

I hereby certify that the corner was perpetuated on October 21, 2014.

Witness: Thomas J. Kopp



Renewal Date: June 30, 2015



UNION COUNTY SURVEYOR

Date Received 10/30/14

Date Filed 10/30/14

Filed By N. L. Griffin

File Number 059-2014R

I used a steel tape and magnetic compass in the establishment of the new accessory. I used 16° East declination, the distances are to a 60d spike driven into the right side of the root crown of the new bearing tree. A brass washer marked OPLS 83571 is attached to the BT blaze of the new bearing tree.

HORIZONTAL CONTROL DATA
UNION COUNTY, OREGON
OREGON STATE PLANE, NORTH ZONE (3601)

STA NAME: 201427

SECTION CORNER COMMON TO SECTIONS 12, 13, 7 AND 18

TWP. 4 N. RGE. 40 & 41 E.

GEODETIC COORD: NAD 83(91)

DATE TIED: October 30, 2014

LAT: 45 ° 13 ' 23.82260 " N

SURVEYOR: RICK G. ROBINSON
OPLS 2219

LONG: 117 ° 44 ' 50.64543 " W

FIRM: BAGETT, GRIFFITH, & BLACKMAN
2006 ADAMS AVENUE
LAGRANDE, OR 97850
(541) 963-6092

SP. COOR: NAD 83(91)

N: 579578.685 INT FT.

E: 8911169.824 INT FT.

TYPE: GPS

THETA: 1 ° 57 ' 7.57569746 "

ORDER: SECOND CLASS: 1

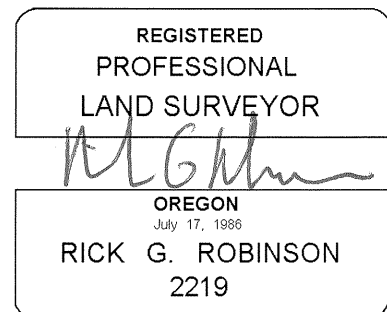
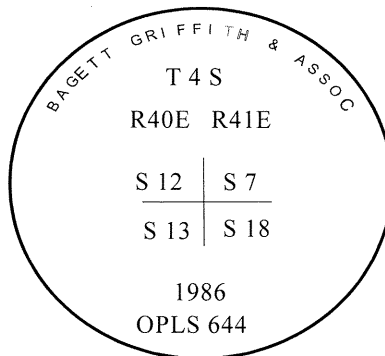
SCALE FACTOR: 0.9998950345

ELEV: 4058.48 US FT.

ELEV: DATUM: NGVD 29

COMMENTS:

2 ½" aluminum monument set in
Collar of stone



Renewal Date: December 31, 2014

1 METER = 3.280833333... US FEET = 39.37 INCHES

1 METER = 3.280839895 INT'L FEET OR 1 INCH = 2.54 CM

TO CALCULATE ELEVATION FACTOR (IN THE NORTH AMERICAN CONTINENT)

DIVIDE 20,906,000 BY (20,906,000 + ELLIPSOID ELEV. IN FEET)