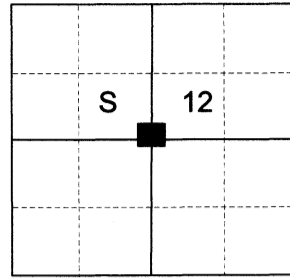


CERTIFIED RECORD OF LAND CORNER MONUMENTATION

HISTORY OF ORIGINAL CORNER ESTABLISHED:

Corner not previously established.

T 5 S R 38 E G-23



DESCRIPTION OF CORNER EVIDENCE FOUND:

None found.

SEE SURVEY 046-2021

DESCRIPTION OF MONUMENT AND ACCESSORIES I ESTABLISHED TO PERPETUATE THE ORIGINAL LOCATION OF THIS CORNER:

At position by Survey I set a 5/8" x 30" iron pin, 27" in the ground, with 2 1/2" aluminum cap marked as shown below, in a collar of stone 2' diam., from which:

NEW BEARING OBJECTS:

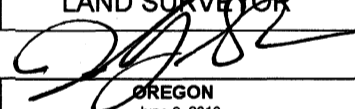
- A 6" Western Larch bears North 15° East, a dist. of 17.45 ft., marked C 1/4 S 12 BT
- A 14" Douglas Fir bears South 47° East, a dist. of 10.15 ft., marked C 1/4 S12 BT
- A 13" White Fir bears South 46° West, a dist. of 18.30 ft., marked C 1/4 S12 BT
- A 7" Western Larch bears North 72° West, a dist. of 7.10 ft., marked C 1/4 S12 BT

Set steel fence post approx. 1.5 ft. West

I hereby certify that the corner was monumented on October 13, 2021.

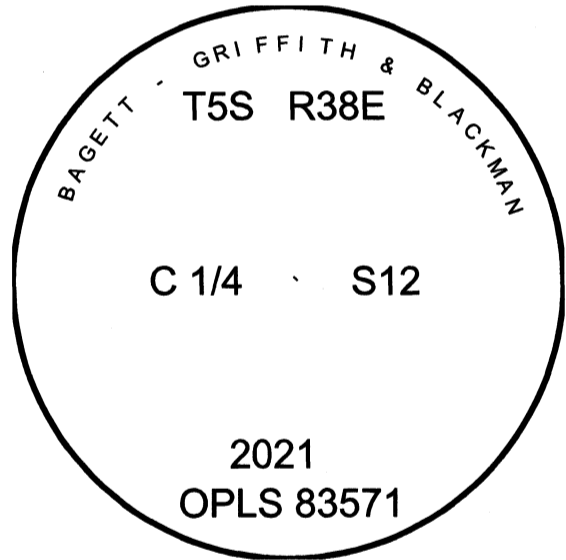
Witnesses: Kyle Tucker, Emmitt Ambert

**REGISTERED
PROFESSIONAL
LAND SURVEYOR**



OREGON
June 2, 2010
JEFFREY S. HSU
83571

Renewal Date: June 30, 2023



**UNION COUNTY
SURVEYOR**

Date Received 11/1/21

Date Filed 11/1/21

Filed By Prof. G. Abin DEPUTY

File Number 053-2021R

I used a steel tape and magnetic compass in the establishment of the new accessories. I used 14° East declination. Distances are to a 60d spike driven into the right side of the root crown of the bearing trees. Bearings are to a brass washer marked OPLS 83571 in the BT blaze of the new bearing trees.