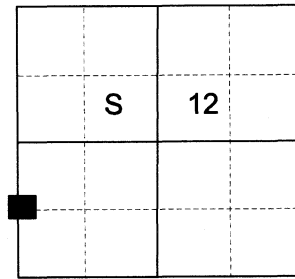


**CERTIFIED RECORD OF LAND CORNER MONUMENTATION**

**HISTORY OF ORIGINAL CORNER ESTABLISHED:**

Corner not previously established.

T 5 S R 38 E H-21



**DESCRIPTION OF CORNER EVIDENCE FOUND:**

None found.

SEE SURVEY 046-2021

**DESCRIPTION OF MONUMENT AND ACCESSORIES I ESTABLISHED TO MONUMENT THE ORIGINAL LOCATION OF THIS CORNER:**

At position by Survey I set a 5/8" x 30" iron pin, 28" in the ground, with 2 1/2" aluminum cap marked as shown below, in collar of stone 1' diam., from which:

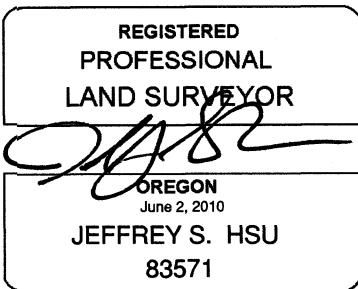
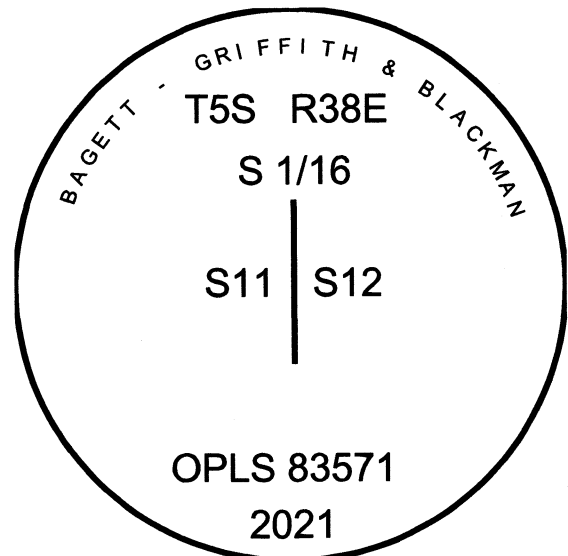
**NEW BEARING OBJECTS:**

A 4" Douglas Fir bears South 53° East, a dist. of 7.70 ft., marked S 1/16 S12 BT  
A 7" Lodgepole Pine bears South 83° West, a dist. of 5.30 ft., marked S 1/16 S11 BT

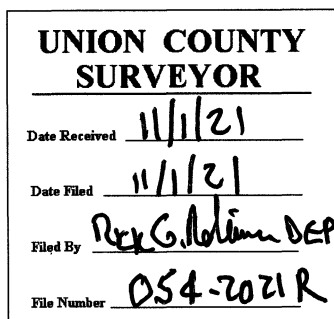
Set steel fence post approx. 1.0 ft. North

I hereby certify that the corner was monumented on October 12, 2021.

Witnesses: Kyle Tucker, Emmitt Ambert



Renewal Date: June 30, 2023



I used a steel tape and magnetic compass in the establishment of the new accessories. I used 14° East declination. Distances are to a 60d spike driven into the right side of the root crown of the bearing trees. Bearings are to a brass washer marked OPLS 83571 in the BT blaze of the new bearing trees.