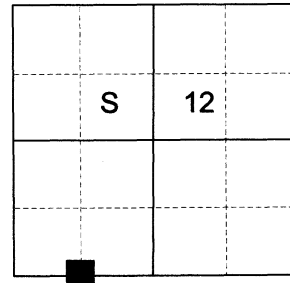


CERTIFIED RECORD OF LAND CORNER MONUMENTATION

HISTORY OF ORIGINAL CORNER ESTABLISHED:

Corner not previously established.

T 5 S R 38 E J-22



DESCRIPTION OF CORNER EVIDENCE FOUND:

None found.

SEE SURVEY 046-2021

DESCRIPTION OF MONUMENT AND ACCESSORIES I ESTABLISHED TO PERPETUATE THE ORIGINAL LOCATION OF THIS CORNER:

At position by Survey I set a 5/8" x 30" iron pin, 28" in the ground, with 2 1/2" aluminum cap marked as shown below, with 2' diam. collar of stone, from which:

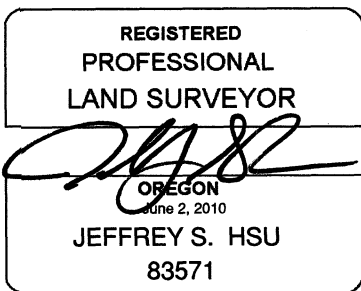
NEW BEARING OBJECTS:

A 22" Ponderosa Pine bears South 4° East, a dist. of 24.75 ft., marked W 1/16 S13 BT
A 16" Douglas Fir bears North 61° West, a dist. of 31.65 ft., marked W 1/16 S12 BT

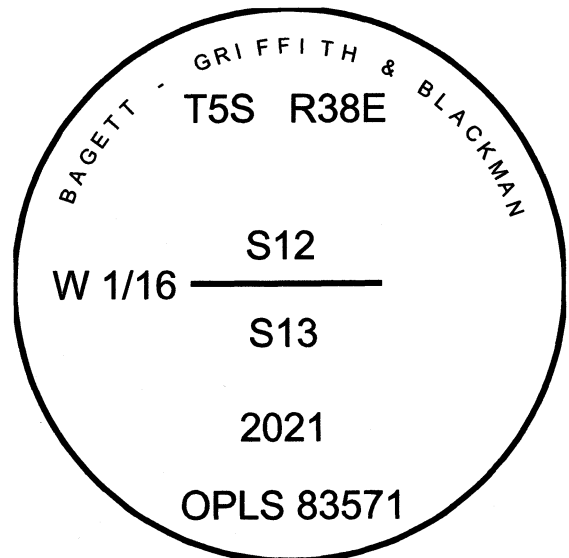
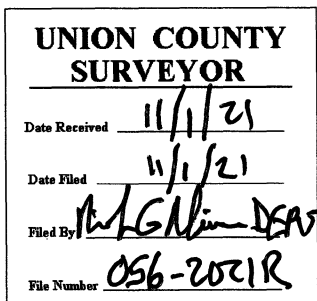
Set steel fence post approx. 1 foot East

I hereby certify that the corner was monumented on October 12, 2021.

Witnesses: Kyle Tucker, Emmitt Ambert



Renewal Date: June 30, 2023



I used a steel tape and magnetic compass in the establishment of the new accessories. I used 14° East declination. Distances are to a 60d spike driven into the right side of the root crown of the bearing trees. Bearings are to a brass cap marked OPLS 83571 in the BT blaze of the new bearing trees.