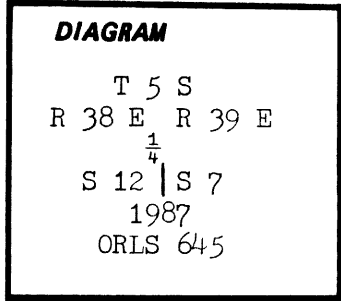


CERTIFIED RECORD OF LAND CORNER MONUMENTATION

History of original corner establishment:

This $\frac{1}{4}$ corner was set by deputy surveyor Timothy W. Davenport, under Contract No. 102, dated July 20, 1863. He states he set a post for the quarter sec. cor. and made a mound of stone.



Description of corner evidence found:

At the assumed $\frac{1}{4}$ corner location I found a raised mound of stone with a soft center, possibly where the post had been and rotted away leaving the soft area. I found evidence of ancient fence remains in a north-south line near the mound.

Description of monument and accessories I established to perpetuate the original location of this corner:

With no other evidence available and the corner position appears correct by survey, I accepted the center of the mound of stone as being the true $\frac{1}{4}$ corner location. I then set an Alum. cap on a 2" x 30" pipe, with a magnet fixed in the cap, at the corner location. I buried the pipe to within 16" above the surface of the ground. I then placed a mound of stone about the pipe $3\frac{1}{2}$ feet dia. and 2 feet high covering the monument. From which I set one bearing tree:

A pine 14" dia. bears S 33 00 W, 73.26 feet and being scribed $\frac{1}{4}$ S S 12 BT.

No other bearing trees are available in the vicinity of this corner.

UNION COUNTY SURVEYOR
Date Received <u>9-22-87</u>
Date Filed <u>9-25-87</u>
By <u>G. LANGLITZ, DEPUTY</u>
File No. <u>108-87 R</u>

REGISTERED PROFESSIONAL LAND SURVEYOR
<i>James H. Hambleton</i>
<u>9-25-87</u>
OREGON JULY 10, 1964 JAMES H. HAMBLETON 645

REFER TO SURVEY 28-87

Office of..... County of.....
State of....., I hereby certify that the within instrument was filed in this office
for record on the..... day of....., 19.....

..... by
(COUNTY OFFICIAL) (DEPUTY)

G-1

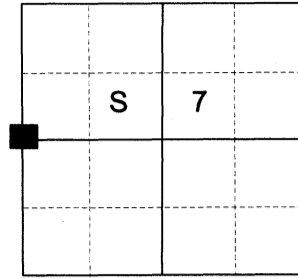
CERTIFIED RECORD OF LAND CORNER MONUMENTATION

HISTORY OF ORIGINAL CORNER ESTABLISHED:

Corner originally established under GLO Contract No. 102, executed by Timothy W. Davenport under GLO Contract No. 102, dated July 20, 1863 Surveyor General field notes state: Set qr. sec. post, made mound of stone

In 1987 James Hambleton, PLS 645, found a mound of stone with a soft center and evidence of ancient fence remains in a North-South line. Set an alum. cap on a 2" x 30" pipe, 14" in the ground, with mound of stone 3 1/2' diam. and 2' high, from which:
A pine 14" dia. bears S 33° W, 73.26 feet and being scribed 1/4 S12 BT

T 5 S R 39 E G-01



DESCRIPTION OF CORNER EVIDENCE FOUND:

A 2 1/2" aluminum pipe, 12" above ground, with 2 1/2" aluminum cap marked as shown below in a mound of stone 3 ft. in diam., from which:
A 20" Ponderosa Pine bears South 33° West, a dist. of 73.25 ft., alive and vigorous with healed blaze.

SEE SURVEY 046-2021

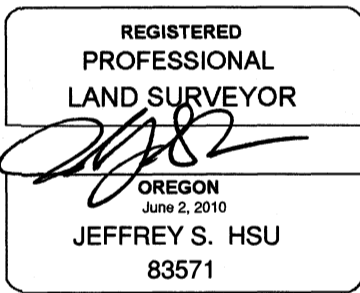
DESCRIPTION OF MONUMENT AND ACCESSORIES I ESTABLISHED TO PERPETUATE THE ORIGINAL LOCATION OF THIS CORNER:

From Aluminum Pipe Monument:

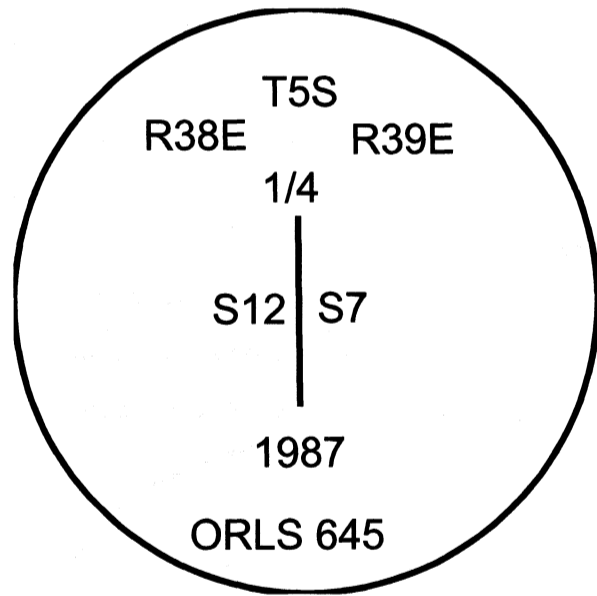
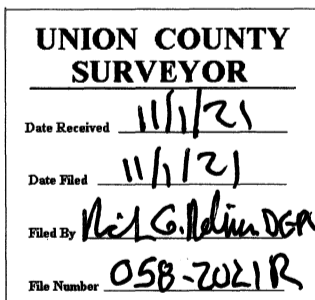
NEW BEARING OBJECTS:

A 1 1/2' x 2' x 1/2' embedded stone bears North 51° East, a dist. of 57.35 ft., marked X B0.
A 5" Ponderosa Pine bears South 39° East, a dist. of 116.35 ft., marked 1/4 S7 BT.
A 22" Ponderosa Pine bears North 2° West, a dist. of 33.80 ft., marked 1/4 S12 BT.

I hereby certify that the corner was perpetuated on September 24, 2021.
Witness: Kyle A. Tucker



Renewal Date: June 30, 2023



I used a steel tape and magnetic compass in the establishment of the new accessories. I used 14° East declination. Distances are to a 60d spike driven into the right side of the root crown of the bearing trees. Bearings are to a brass washer marked OPLS 83571 in the Bt blaze of the new bearing trees. Distance and bearing of the stone is to the center of the chiseled X.