

# HORIZONTAL CONTROL DATA

UNION COUNTY, OREGON  
OREGON STATE PLANE, NORTH ZONE (3601)

STA. NAME: 9303

CORNER COMMON TO 14,15,22 & 23

TWP. 6 S. RGE.39 E.

DATE SET: OCT. 1993

SURVEYOR: WALTER L. CASWELL  
PLS 737

FIRM: EAGLE GPS SURVEY CORP  
13545 NW SCIENCE PARK DR  
PORTLAND, OR. 97229  
(503) 643-1073

TYPE: GPS

ORDER: SECOND CLASS: 1

GEODETIC COOR: NAD 83(91)

LAT: 45°02'07.72426" N

LONG: 117°54'42.45797" W

SP. COOR: NAD 83(91)

N: 509744.908 INT.FT.

E: 8871030.348 INT.FT.

THETA: 1°50'07.870"

SCALE FACTOR: 0.999897275

ELEV: 3240.55 US.FT.

ELEV. DATUM: NGVD 29

\*\*\*\*\*  
DIRECTIONS "TO REACH": FROM THE CORNER OF OREGON TRAIL ROAD AND  
2ND STREET (HIGHWAY 237), GO NORTHEAST ON HIGHWAY 237 FOR 0.6  
MILES TO THE NORTH POWDER CEMETERY ON YOUR LEFT. ENTER THE  
CEMETERY AND GO TO THE NORTHWESTERN MOST CORNER OF THE CEMETERY  
PROPERTY. THERE ARE FENCES GOING SOUTH, EAST AND WEST FROM THIS  
CORNER. CROSS OVER TO THE NORTH SIDE OF THE  
EAST-WEST RUNNING FENCE AND GO DOWN A LITTLE  
HILL TO THE EAST. THE GROUND WILL LEVEL OUT  
AND THERE IS A SHORT STRETCH WHERE THE  
CULTIVATED GROUND GETS CLOSEST TO THE FENCE.  
THE PIPE IS IN THE GRASS AND ABOUT AN INCH  
NORTH OF A WOODEN FENCE POST. THERE ARE THORN  
BUSHES ALL ALONG THE FENCE. THE STATION IS A  
1" PIPE THAT STICKS UP ABOUT 10 INCHES.

REGISTERED  
PROFESSIONAL  
LAND SURVEYOR

*Walter L. Caswell*

OREGON  
JULY 8, 1966  
WALTER L. CASWELL  
737

EXPIRES 12/31/95

1 METER = 3.280833333333... U.S. FEET = 39.37 INCHES  
1 METER = 3.280839895 INT'L FEET OR 1 INCH = 2.54 CM.  
TO CALCULATE ELEVATION FACTOR (IN THE NORTH AMERICAN CONTINENT)  
DIVIDE 20,906,000 BY (20,906,000 + ELLIPSOID ELEV. IN FEET)  
SHEET 4 OF 37

**UNION COUNTY SURVEYOR**

**CERTIFIED RECORD OF LAND CORNER MONUMENTATION**

**HISTORY OF ORIGINAL CORNER ESTABLISHMENT:**

Corner originally established by David P. Thompson, contract No. 103, dated September 3, 1863. Surveyor General record states:

Set post for corner to secs 14,15,22, & 23 in mound of earth with charred stakes, pits, trenches, as per instructions.

Survey No. 064-1991 calls found unrecorded 1" diameter pipe accepts as corner  
Survey No. 066-1991 found 1" diameter pipe  
Survey No. 023-1995 found 1" diameter pipe

T 6 S R 39 E N-17



No record of subsequent monumentation found in Union County survey records.

**DESCRIPTION OF CORNER EVIDENCE FOUND:**

Found 1" diameter pipe

See Survey No. 012-2001

**DESCRIPTION OF MONUMENT AND ACCESSORIES I ESTABLISHED TO PERPETUATE THE ORIGINAL LOCATION OF THIS CORNER:**

At position of 1" diameter pipe, I set a 2 1/2" x 30" aluminum monument, marked as shown below, 30" in the ground from which:

A 5/8" x 30" iron pin with 1 1/2" aluminum cap bears N41°E, a distance of 12.91 feet, marked UNION COUNTY SURVEYOR NE RP.

A 5/8" x 30" iron pin with 1 1/2" aluminum cap in a East-West fenceline bears S89°E, a distance of 9.04 feet, marked UNION COUNTY SURVEYOR SE RP.

A 5/8" x 30" iron pin with 1 1/2" aluminum cap in a East-West fenceline bears S74°W, a distance of 6.07 feet, marked UNION COUNTY SURVEYOR SW RP.

A 5/8" x 30" iron pin with 1 1/2" aluminum cap bears N49°W, a distance of 14.83 feet, marked UNION COUNTY SURVEYOR NW RP.

I hereby certify that the corner was monumented on March 27, 2001.  
Witness: Norbert Volny and Gregory T. Blackman, Jr.

REGISTERED  
PROFESSIONAL  
LAND SURVEYOR  
*Gregory T. Blackman*  
OREGON  
JULY 13, 1973  
**GREGORY T. BLACKMAN**  
991

Renewal Date: Dec. 31, 2001

UNION COUNTY SURVEYOR  
T 6 S R 39 E  
S 15 | S 14  
S 22 | S 23  
2001  
OPLS 991

**UNION COUNTY SURVEYOR**  
Date Received 3/30/01  
Date Filed 4/14/01  
Filed By R. ROBINSON, DEPUTY  
File Number 025-2001R

I used a Leica 530 GPS unit in the establishment of the new accessories. The Basis of Bearings is the same as that shown on Survey No. 012-2001. The distances are to the center of a 5/8"x30" rebar with 1 1/2" aluminum cap marked Union County Survey Marker.

# HORIZONTAL CONTROL DATA

## UNION COUNTY, OREGON

### OREGON STATE PLANE, NORTH ZONE (3601)

STA NAME: 200145

CORNER COMMON TO: 14,15,22,23

TWP. 6 S. RGE. 39 E.

GEODETIC COORD: NAD 83(91)

DATE TIED: 28 MARCH 2001

LAT: 45 ° 2 ' 7.72393 " N

SURVEYOR: GREGORY T. BLACKMAN  
OPLS 991

LONG: 117 ° 54 ' 42.45802 " W

FIRM: BAGETT, GRIFFITH, & BLACKMAN  
2006 ADAMS AVENUE  
LAGRANDE, OR 97850  
(541) 963-6092

SP. COOR: NAD 83(91)

N: 509744.875 INT FT.

E: 8871030.346 INT FT.

TYPE: GPS

THETA: 1 ° 50 ' 7.87048568 "

ORDER: SECOND CLASS: 1

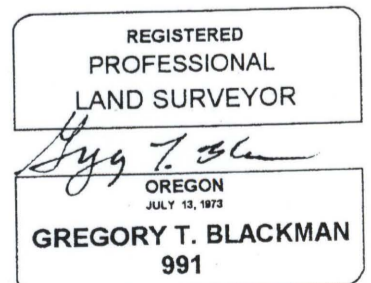
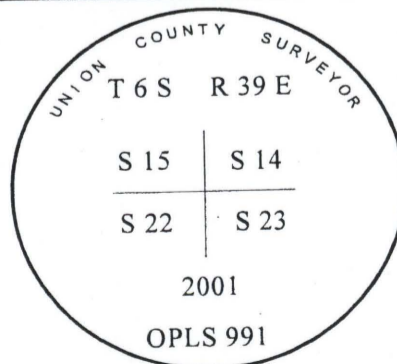
SCALE FACTOR: 0.9998972754

ELEV: 3240.02 US FT.

ELEV: DATUM: NGVD 29

**COMMENTS:**

Remonumented 1" pipe with GPS point number 9303. Point has light obstructions see sheet.



Renewal Date: Dec. 31, 2001

METER = 3.2808333333... US FEET = 39.37 INCHES  
 1 METER = 3.280839895 INT'L FEET OR 1 INCH = 2.54 CM  
 TO CALCULATE ELEVATION FACTOR ( IN THE NORTH AMERICAN CONTINENT )  
 DIVIDE 20,906,000 BY (20,906,000 + ELLIPSOID ELEV. IN FEET)