

32 D

A-36

Town of Le Grand

66 lots + 2 out lots unsold

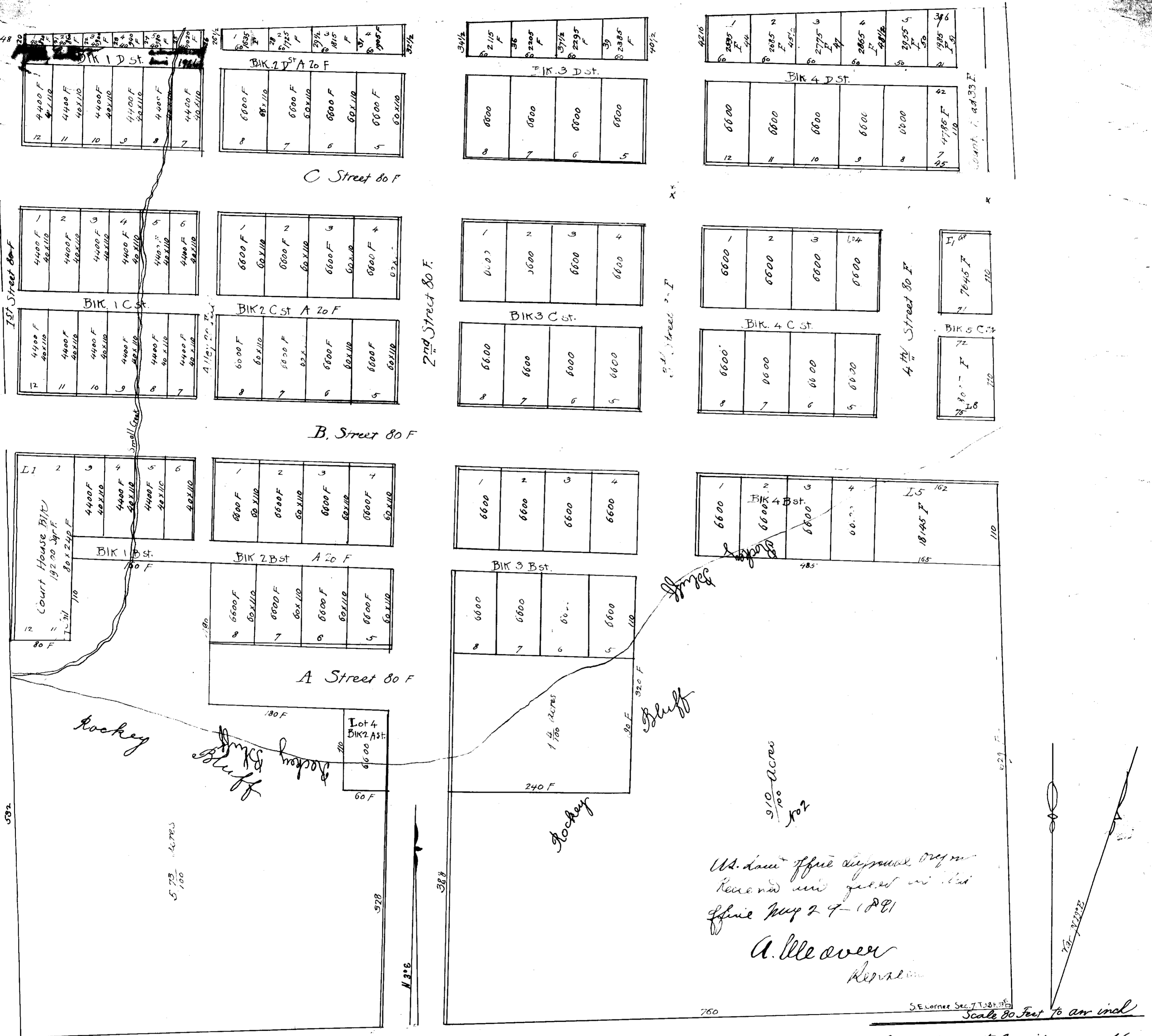


The Town of Le Grand is situated on the S.E. 1/4 of the S.E. 1/4 of Sec. 7 Township 3 South of Range 38 East of the Willamett Meridian and contains 40 acres of land it was first laid out in Sept. A.D. 1862, and incorporated Dec. 18th 1865 and being laid out previous to the Gov. Survey it lies N. 3° East of said Survey. All Streets 80 feet and all Alleys 20 feet wide. All full blocks 240 feet square the first tier of blocks east of 1st Street is divided into lots 20 by 110 feet and contain 2200 sq. feet the blocks east of the 20 foot alley are divided into lots 60 by 110 feet containing 6600 sq. feet each. All fractional lots are marked with the number of square feet on each. The large red line indicates the line of rocky hill lands and except for business purposes the town is returned on the west onto the private land claim of Green Arnold on the north on that of G. Brown on the east on the land claim of Daniel Chaplin all of which have Gov. Patents for their land.

We the undersigned Resident and Recorder of the Town of Le Grand asking for and in behalf of said Town certify that the above map is correct.
 R. H. Mallory Pres. Town Council
 B. J. Patterson Recorder

Subscribed and sworn to before me this 4th day of February 1868
 E. S. McComas
 County Clerk.

Town of Le Grand



The Town of Le Grand is situated on the S E 1/4 of the S E 1/4 of Sec. 7 Township 3 South of Range 38 East of the Willamett Meridian and contains 40 acres of land it was first laid out in Sept. 1862 and incorporated Dec. 18th 1865 and being layed out pursuant to the Survey of Dec. 13th 1862 East of said Survey. All Streets are 80 feet wide all Alleys 20 feet wide. All full Blocks are 240 feet Square the first tier of Blocks East of 1st Street is divided into lots 40 by 110 ft. and contain 4400 Sq feet the Blocks east of the 20 foot alley are divided into lots 60 by 110 feet containing 6600 Sq feet each, all fractional lots are marked with the number of Square feet on each the larger red line indicates the line of rocky bluffs on the South side of Town and the large red lots marked 9 1/2 acres 5 1/2 Acres and 1 1/2 acres are composed mostly of rocky hill lands and unfit for business purposes the Town is extended on the west onto the private land claim of Green Arnold on the North on that of B. Brown and on the East on the land claim of Daniel Chaplin all of which have Gov Patents for their lands

We the undersigned President and Recorder of the Town of Le Grande acting for and in behalf of said Town certify that the above map is correct
 W. H. Mallory, First Town Council
 W. H. Patterson, Recorder

Subscribed and sworn to before me this 14th day of February 1868
 J. M. Cornas
 County Clerk

Seal.