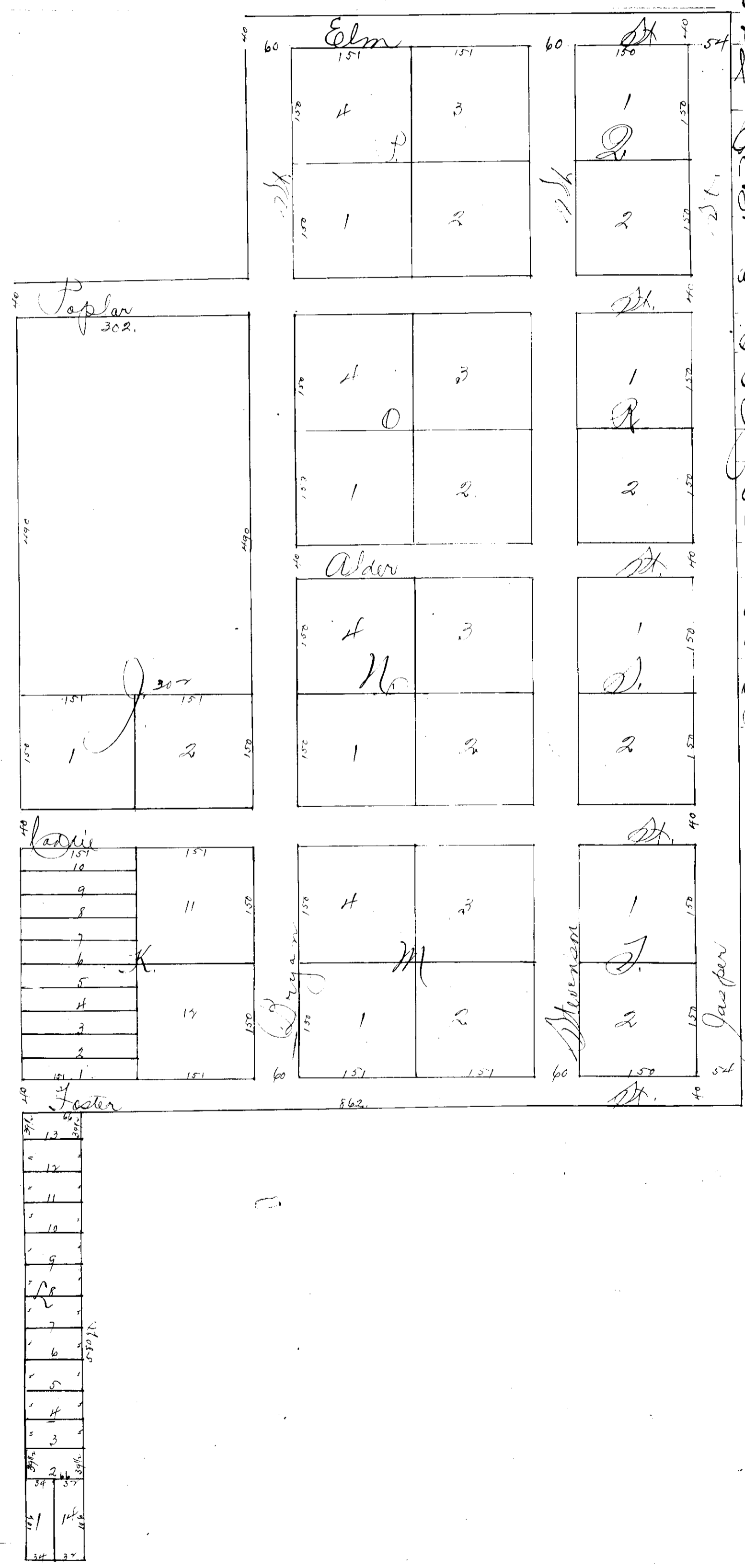


McDaniel 2nd Addn.

To.

One.



E. P. McDaniel and Frances J. McDaniel, his wife, being the owners of the land covered by the annexed plat, say that they caused the same to be plotted in the manner shown, and that the land embraced in said plat is as shown to wit:

Commencing at a point which is 292 feet East and 137 1/4 feet North of the SW Corner of Section 4 of T. 4 N. R. 40 E. 10. M., running thence North 1600 feet thence East 202 feet thence North 350 feet thence East 626 feet thence South 400 feet thence West 862 feet thence South 580 feet thence West 66 feet to the place of beginning.

That the measurements of all lots, blocks and streets, are as shown on said plat, and the streets as shown thereon are dedicated to the public use forever.

In Witness Whereof, they have hereunto set their hands and seals this 26 day of September 1902.

Executed in presence of
 Jasper G. Stearns,
 Notary Public,
 State of Oregon,
 County of Union.

E. P. McDaniel
 Frances J. McDaniel

This Certifies that on this 26 day of September 1902 before me the undersigned, a Notary Public in and for said County and State, personally appeared the within named E. P. McDaniel and Frances J. McDaniel, his wife, who are personally known to me to be the invited persons described in and who executed the within instrument, and acknowledged to me that they executed the same freely and voluntarily for the uses and purposes therein named.

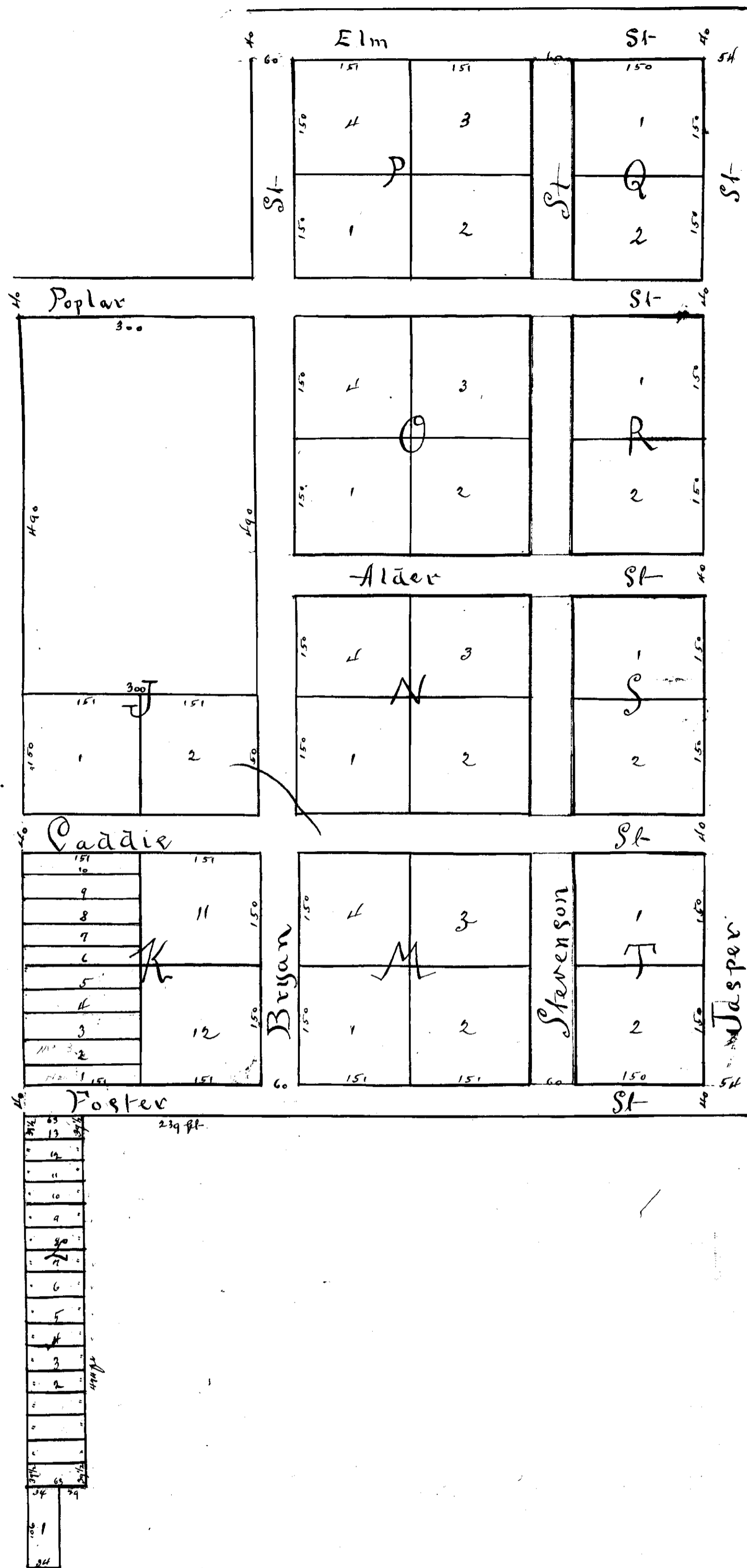
In Witness Whereof, I have hereunto set my hand and seal, the day and year last above written.

Jasper G. Stearns
 Notary Public

Jasper G. Stearns
 Notary Public for Oregon

Recorded Nov 10 - 1902 at 2 P.M.
 D.H. Proctor
 Recorder
 By A. Gardner
 Deputy

McDaniel's 2nd Add'n - To Cove.



VACATION - 1947
 STEVENSON STREET
 DEED BOOK 114, Pg. 251
 POSTED MAY 29, 1936 C. LANGRISH
 DEP. CO. SURVYR.

E. O. McDaniel and Frances J. McDaniel his wife being the owners of said covered by the annexed plat say that they caused the same to be plotted in the manner shown and that the land embraced in said plat is as shown to wit: Commencing at a point which is 392 feet east and 1141 1/4 feet north of the SW corner of SE 1/4 of Section 16, Twp. 36 N. R. 10 E. 10th running thence North 1000 feet thence east 500 feet thence North 380 feet thence east 100 feet thence South 1100 feet thence West 362 feet thence South 174 feet thence West 29 feet thence South 100 feet thence West 34 feet to the place of beginning. That the measurements of said blocks and streets are as shown on said plat and the streets as shown thereon are dedicated to the public use forever.

By witnesses whose names are hereunto set their hands and seals this 26th day of September 1899.

Executed in presence of
 Jasper G. Stevens, Carl C. Stevens, E. O. McDaniel
 Henry Public for Oregon, Frances J. McDaniel
 This certifies that on this 26th day of September 1899 before me the undersigned a Notary Public County of Union in and for said County and State personally appeared the within named E. O. McDaniel and Frances J. McDaniel his wife who are personally known to me to be the identical persons described in and who executed the within instrument and acknowledged to me that they executed the same freely and voluntarily, for the uses and purposes therein named. My official duties have hereunto being read and read the day and year last above written.

Notarise
 Seal

Filed and Recorded
 July 11th 1900.
 at 1:00 P.M.
 John M. Johnson
 Recorder
 By Geo. Beidelman
 Deputy

20 Cor of
 392 ft
 13 1/2 ft
 18 1/2 ft
 21 1/2 ft
 24 ft
 27 ft
 30 ft
 33 ft
 36 ft
 39 ft
 42 ft
 45 ft
 48 ft
 51 ft
 54 ft
 57 ft
 60 ft
 63 ft
 66 ft
 69 ft
 72 ft
 75 ft
 78 ft
 81 ft
 84 ft
 87 ft
 90 ft
 93 ft
 96 ft
 99 ft
 102 ft
 105 ft
 108 ft
 111 ft
 114 ft
 117 ft
 120 ft
 123 ft
 126 ft
 129 ft
 132 ft
 135 ft
 138 ft
 141 ft
 144 ft
 147 ft
 150 ft
 153 ft
 156 ft
 159 ft
 162 ft
 165 ft
 168 ft
 171 ft
 174 ft
 177 ft
 180 ft
 183 ft
 186 ft
 189 ft
 192 ft
 195 ft
 198 ft
 201 ft
 204 ft
 207 ft
 210 ft
 213 ft
 216 ft
 219 ft
 222 ft
 225 ft
 228 ft
 231 ft
 234 ft
 237 ft
 240 ft
 243 ft
 246 ft
 249 ft
 252 ft
 255 ft
 258 ft
 261 ft
 264 ft
 267 ft
 270 ft
 273 ft
 276 ft
 279 ft
 282 ft
 285 ft
 288 ft
 291 ft
 294 ft
 297 ft
 300 ft
 303 ft
 306 ft
 309 ft
 312 ft
 315 ft
 318 ft
 321 ft
 324 ft
 327 ft
 330 ft
 333 ft
 336 ft
 339 ft
 342 ft
 345 ft
 348 ft
 351 ft
 354 ft
 357 ft
 360 ft
 363 ft
 366 ft
 369 ft
 372 ft
 375 ft
 378 ft
 381 ft
 384 ft
 387 ft
 390 ft
 393 ft
 396 ft
 399 ft
 402 ft
 405 ft
 408 ft
 411 ft
 414 ft
 417 ft
 420 ft
 423 ft
 426 ft
 429 ft
 432 ft
 435 ft
 438 ft
 441 ft
 444 ft
 447 ft
 450 ft
 453 ft
 456 ft
 459 ft
 462 ft
 465 ft
 468 ft
 471 ft
 474 ft
 477 ft
 480 ft
 483 ft
 486 ft
 489 ft
 492 ft
 495 ft
 498 ft
 501 ft
 504 ft
 507 ft
 510 ft
 513 ft
 516 ft
 519 ft
 522 ft
 525 ft
 528 ft
 531 ft
 534 ft
 537 ft
 540 ft
 543 ft
 546 ft
 549 ft
 552 ft
 555 ft
 558 ft
 561 ft
 564 ft
 567 ft
 570 ft
 573 ft
 576 ft
 579 ft
 582 ft
 585 ft
 588 ft
 591 ft
 594 ft
 597 ft
 600 ft
 603 ft
 606 ft
 609 ft
 612 ft
 615 ft
 618 ft
 621 ft
 624 ft
 627 ft
 630 ft
 633 ft
 636 ft
 639 ft
 642 ft
 645 ft
 648 ft
 651 ft
 654 ft
 657 ft
 660 ft
 663 ft
 666 ft
 669 ft
 672 ft
 675 ft
 678 ft
 681 ft
 684 ft
 687 ft
 690 ft
 693 ft
 696 ft
 699 ft
 702 ft
 705 ft
 708 ft
 711 ft
 714 ft
 717 ft
 720 ft
 723 ft
 726 ft
 729 ft
 732 ft
 735 ft
 738 ft
 741 ft
 744 ft
 747 ft
 750 ft
 753 ft
 756 ft
 759 ft
 762 ft
 765 ft
 768 ft
 771 ft
 774 ft
 777 ft
 780 ft
 783 ft
 786 ft
 789 ft
 792 ft
 795 ft
 798 ft
 801 ft
 804 ft
 807 ft
 810 ft
 813 ft
 816 ft
 819 ft
 822 ft
 825 ft
 828 ft
 831 ft
 834 ft
 837 ft
 840 ft
 843 ft
 846 ft
 849 ft
 852 ft
 855 ft
 858 ft
 861 ft
 864 ft
 867 ft
 870 ft
 873 ft
 876 ft
 879 ft
 882 ft
 885 ft
 888 ft
 891 ft
 894 ft
 897 ft
 900 ft
 903 ft
 906 ft
 909 ft
 912 ft
 915 ft
 918 ft
 921 ft
 924 ft
 927 ft
 930 ft
 933 ft
 936 ft
 939 ft
 942 ft
 945 ft
 948 ft
 951 ft
 954 ft
 957 ft
 960 ft
 963 ft
 966 ft
 969 ft
 972 ft
 975 ft
 978 ft
 981 ft
 984 ft
 987 ft
 990 ft
 993 ft
 996 ft
 999 ft
 1000 ft