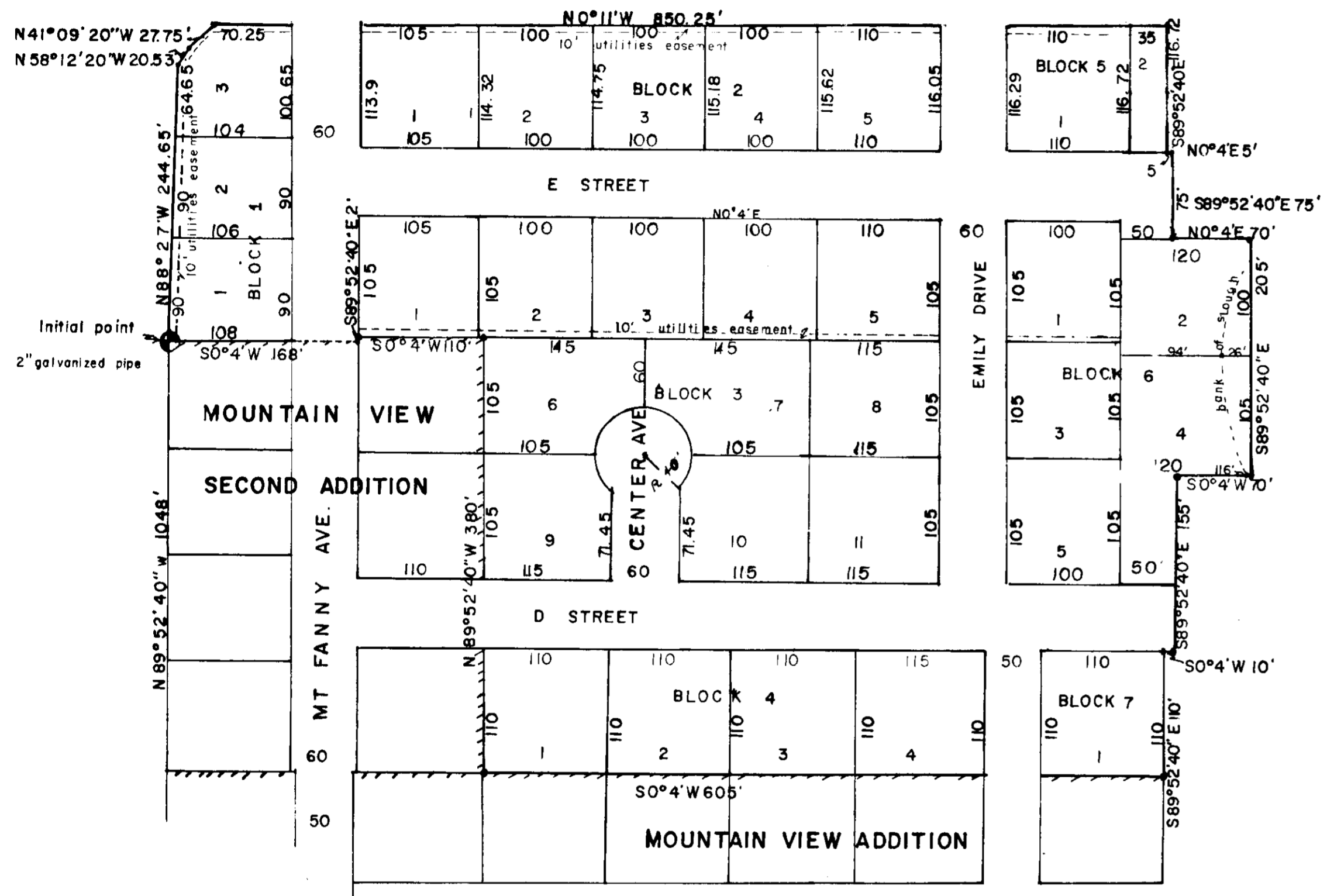
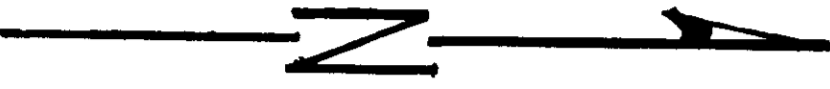


MOUNTAIN VIEW THIRD ADDITION

ISLAND CITY, OREGON

SCALE 1" = 100'



Initial point
2" galvanized pipe
N 89° 52' 40" W 1048'
S 0° 4' W 168'
N 0° 4' E 1324.5'
S 0° 4' W 605'
N 0° 4' E 1324.5'
S 0° 4' W 168'

and *Portia E. White*

Ray H. White, as owner of property of area platted on accompanying plat do here by execute and declare the following dedication for purpose of establishing Mountain View Third Addition. All streets are donated to and for public use. Easements for purpose of utilities across land.

Ray H. White
Portia E. White

State of Oregon:
County of Union:
On the 5th day of October 1970 Ray H. White personally appeared before me and acknowledged the foregoing dedication to be his voluntary act and deed.

Portia E. White appeared before me & acknowledged the foregoing
8-18-71
Deloris C. Moore
Union County Clerk

Deloris C. Moore
Notary public for Oregon
My commission expires _____
Union County Clerk

DATE - OCTOBER 1, 1970

STATE OF OREGON } ss
County of Union }
I certify that the within instrument of writing was received for record on the 18th day of Aug 1971 at 4:00 o'clock PM, and recorded on page 63 in book 2 Record of Plats of said County.
By *Deloris C. Moore* County Clerk,
By *Deloris C. Moore* Deputy.

63 A 19710001 31852

STATE OF OREGON } ss
County of Union }
I certify that the within instrument of writing was received for record on the 5th day of February 1971 at _____ o'clock _____ M., and recorded on page _____ in book _____ Record of Plats of said County.
By *Deloris C. Moore* County Clerk,
By *Deloris C. Moore* Deputy.

I, James G. Voelz, certify that I am a registered land surveyor in the state of Oregon and have surveyed the land as shown on accompanying plat. The initial point of the survey is designated by a two inch galvanized iron pipe thirty six inches long and driven six inches below surface of ground. All corners are placed in accordance with ORS 92.060. LEGAL DESCRIPTION: The initial point of Mountain View Third Addition is determined by commencing at the south one quarter corner of Section 3, T3S, R38EWM. and running N0°4'E 1324.5' to south boundary of NE*SW* of said Section 3.; thence N89°52'40"W a distance of 1048' to the southwest corner of Mountain View Second Addition and the initial point; thence N88°27'W 244.65'; thence N58°12'20"W 20.53'; thence N41°09'20"W 27.75' to the west boundary of NE*SW* of said section 3; thence N0°12'W on the west boundary of NE*SW* 850.25'; thence S89°52'40"E 116.72'; thence N0°4'E 5'; thence S89°52'40"E 75'; thence N0°4'E 70.00'; thence S89°52'40"E 205'; thence S0°4'W 70'; thence S89°52'40"E 155'; thence S0°4'W 10'; thence S89°52'40"E 110' to the west boundary of Mountain View Addition; thence S0°4'W on west boundary of Mountain View Addition 605' to northeast corner of Mountain View Second Addition; thence N89°52'40"W on north boundary of said Second Addition 380' to northwest corner Mountain View Second Addition; thence on west boundary said Second Addition S0°4'W 110'; thence S89°52'40"E 2'; thence S0°4'W 168' to point of beginning. Situate in NE*SW* of Section 3, T3S, R38EWM.

State of Oregon:
County of Union:

James G. Voelz
James G. Voelz Professional land surveyor
Oregon Reg. No. 381

Subscribed and sworn to before me this 22nd day of October 1970.

My commission expires 2-12-73
Loisance Hardy
Notary Public for Oregon

The accompanying plat is here by adopted by the undersigned:

County Planning Commission *[Signature]* Approved 25 day October 1970.
County Surveyor, Acting *James D. Bailey* Approved 26th day October 1970.
F.M. Hartsock and *W.F. Moore* respectively assessor and sheriff of Union County, Oregon hereby certify that we have examined the tax records of area in accompanying plat and all State and County taxes and assessments that could constitute a lien on platted land have been paid and plat approved.
F.M. Hartsock Approved 23 day October 1970. *W.F. Moore* Approved 23 day October 1970
County Assessor Sheriff

This certifies that the plat of Mountain View Third Addition, Union County, Oregon, is approved for filing and placed in the Record of Town Plats of Union County, Oregon by the undersigned by order dated the _____ day _____ 1970 and recorded in County Court Journal _____ page _____.

[Signature] Approved 5th day Feb 1971
County Judge Commissioner
[Signature] Approved _____ day _____ 1970. *[Signature]* Approved 5th day Feb 1971
Commissioner Commissioner

I, _____ County Clerk of Union County do certify that the above named are now the duly qualified, elected, sworn and acting judge and commissioners of Union County, the above signatures are genuine, and the seal hereto affixed is the seal of my office.

[Signature]
County Clerk

July 20, 1971

Mr. Earle Misener
County Judge, Union County.

Dear Mr. Misener;

Referring to the conversation in your office with Carl Stone, Ray White and my self in regards to making necessary changes on the sub-division plat of Ray White's, would it be possible to remove the plat from the plat book to take to the drafting table.

Yours truly



FILED


AT 2:20 PM

JUL 26 1971

DELORIS C. MOORE
COUNTY CLERK

Bertie McDaniel
ESQ.

Approved



July 26, 1971

August 20, 1971

Mr. Earle Misener
Union County Judge

Dear Mr. Misener:

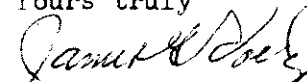
Reference of my letter to you of July 20, 1971 in regards to the plat of Ray White. After your approval of my letter the plat was corrected and refiled. Filing took place on Aug 18, 1971.

Accompanying this letter is the original tracing which should be re-entered into official record.

It would be appreciated if you would have the county clerk refile this tracing along with the tracing filed on August 18 and have the County Clerk stamp annotate the tracing to the effect that it is interred in to record for historical purpose only.

Per instructions the signature of Yates was removed as he was not the legal owner. The street to well lot 35 was incorporated in to lot 35. The street to lot 4 was incorporated into lot 4.

Yours truly


County surveyor