

REFERENCE MATERIAL

1922 CITY OF LA GRANDE
 REMONUMENTATION MAP
 SURVEY NO. 10-76

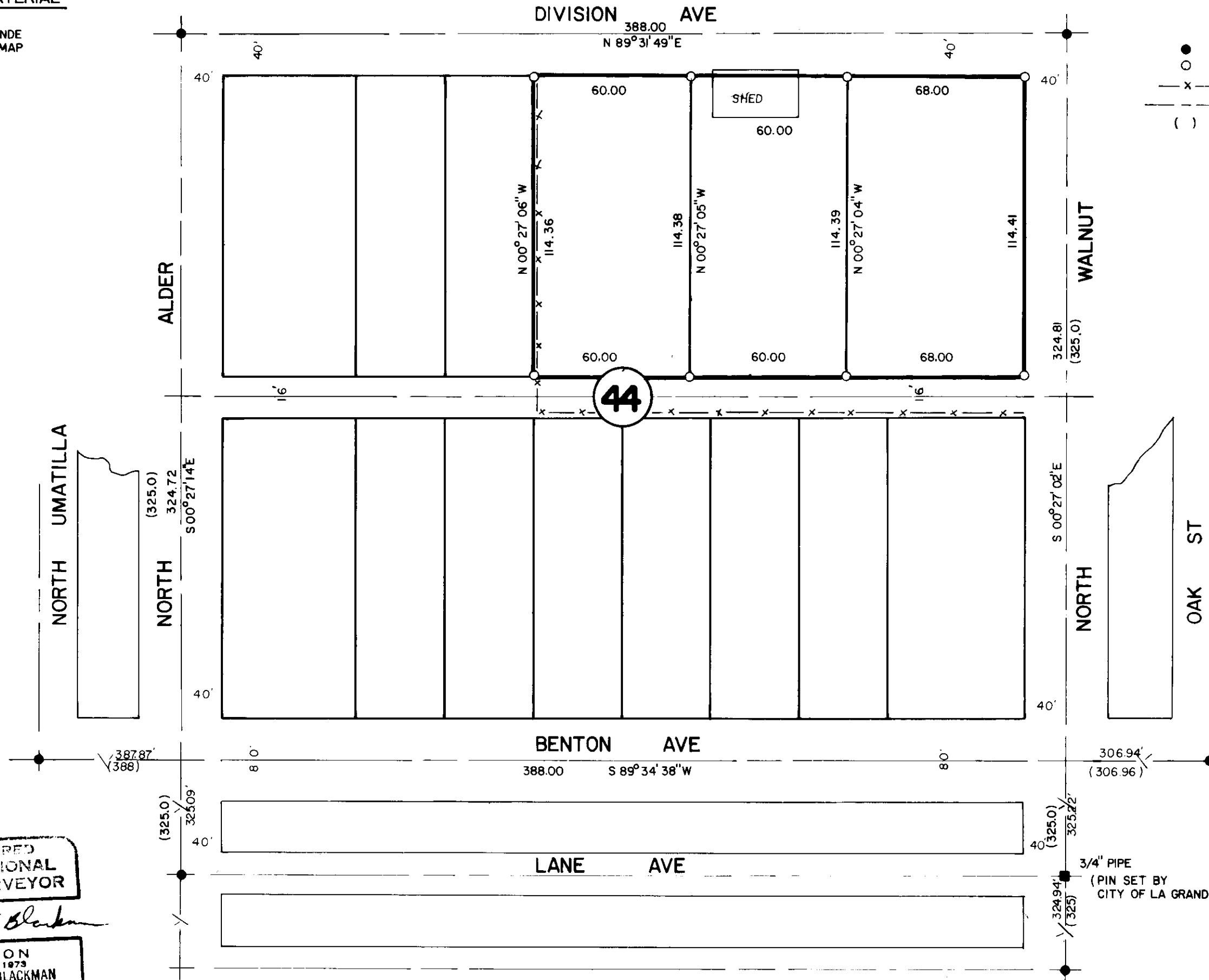
LEGEND

- FOUND MONUMENT OF RECORD
- SET 5/8" x 30" REBAR
- x - EXISTING FENCE
- - - CENTERLINE OF STREET
- () RECORD DISTANCE AND BEARING



BASIS OF BEARING

FORWARD BEARING AS PUBLISHED BY THE
 U.S.C. & G.S. FROM ΔCOLLEGE TO ΔVALLEY



44

REGISTERED
 PROFESSIONAL
 LAND SURVEYOR

Gregory T. Blackman

OREGON
 JULY 13, 1973
 GREGORY T. BLACKMAN
 991

BAGETT, GRIFFITH & ASSOCIATES		
La Grande, Oregon		
Map of Survey		
LOTS 1,2,3,4,5, BLOCK 44		
RIVERSIDE ADDITION		
TO		
LA GRANDE		
UNION COUNTY, OREGON		
SURVEYED FOR	PHIL JARMER	
SURVEYED BY	G.T.B.	5/77
Scale: 1" = 40'	Drawn by: S.S.Z.	5/77