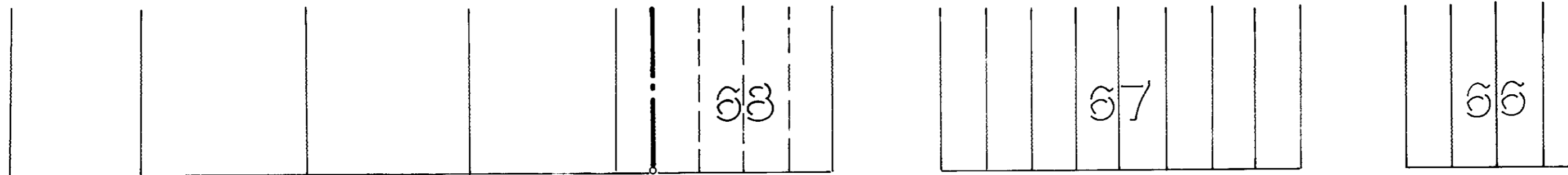


MAP OF FIELD SURVEY
 BLOCK 69 HINDMAN S ADDITION
 TO ELGIN UNION COUNTY, OREGON
 SE. 1/4 SEC. 15, T. 1N. R. 39 E., W.M.

REQUESTED BY: BOB JONAS
 DATE: MAY 28 1977 SCALE: 1" = 60' U.S. TIE, S. 1/4 COR. 15
 BEARINGS: TRUE FROM C.S. LINE FOUND, NE. COR. BLOCK 69

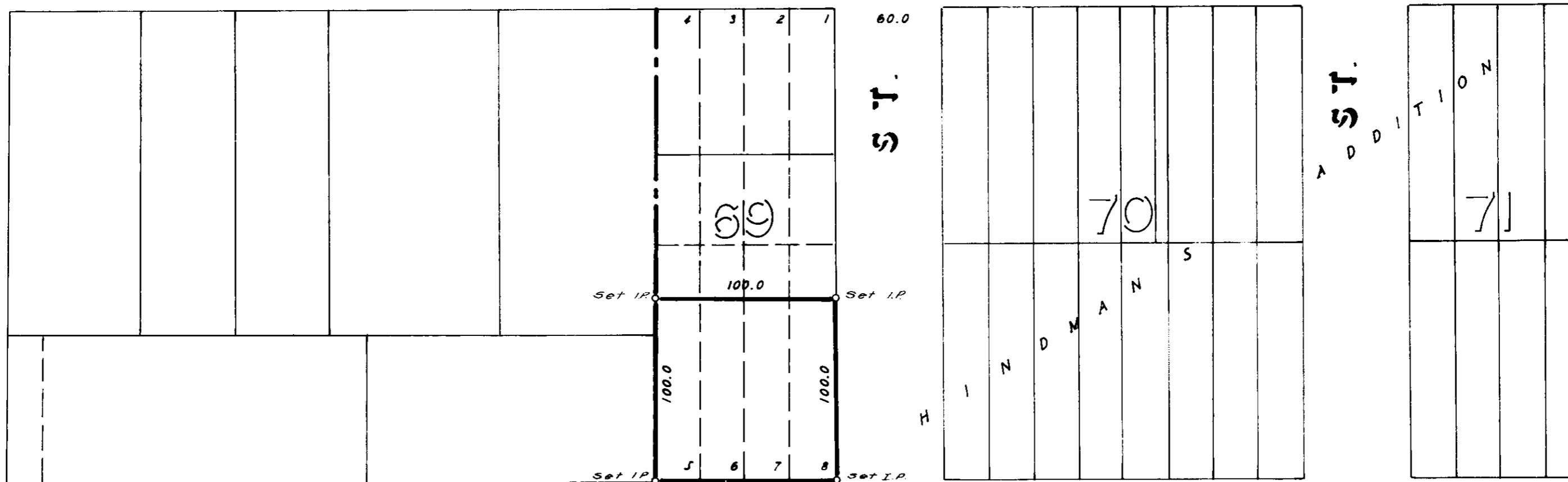
PREPARED BY: EASTERN OREGON LAND SURVEYS
 LA GRANDE ELGIN



A L D E R

N. 89° 43' 26" W.

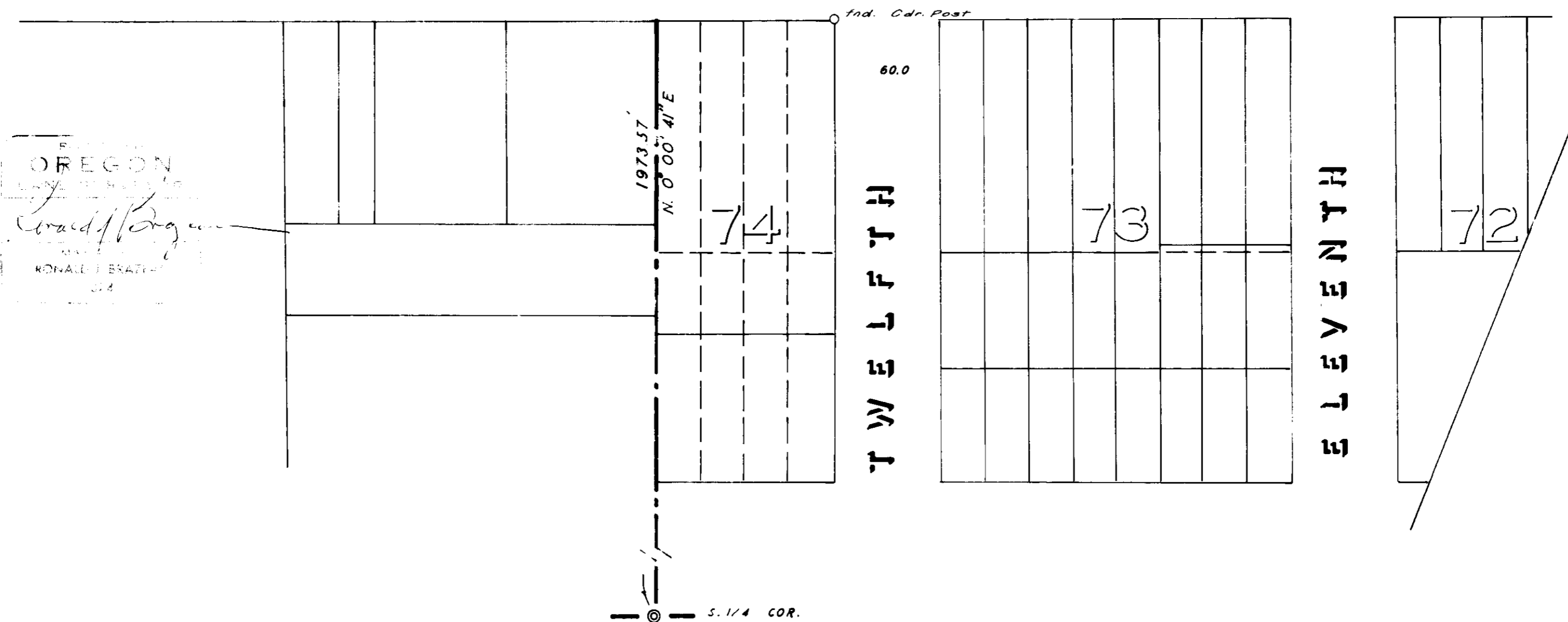
S T R E E T



B I R C H

S. 89° 43' 26" E.

S T R E E T



STATE OF OREGON
 County of Union
 Ronald J. Bracy
 Surveyor
 24

S. 1/4 COR.

31-77