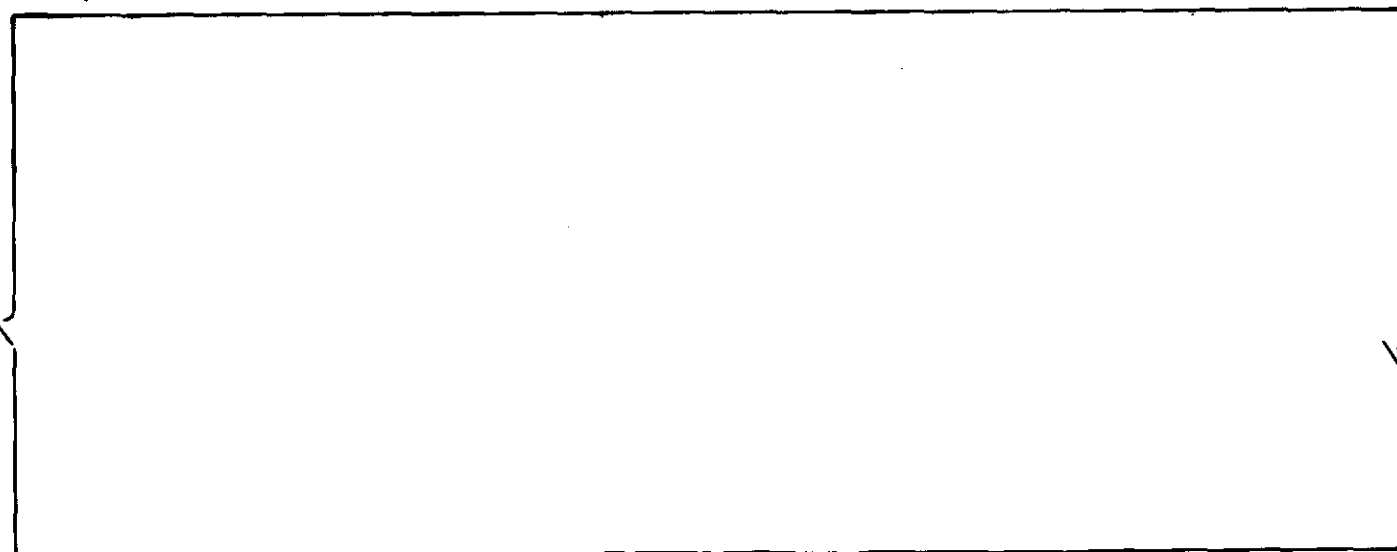


FOUND LEAD PLUG &
BRASS SCREW

FOUND NAIL & LEAD
PLUGS ON CURBS

THIRD ST
N 00° 22' 40" E
369.85 (370.00)



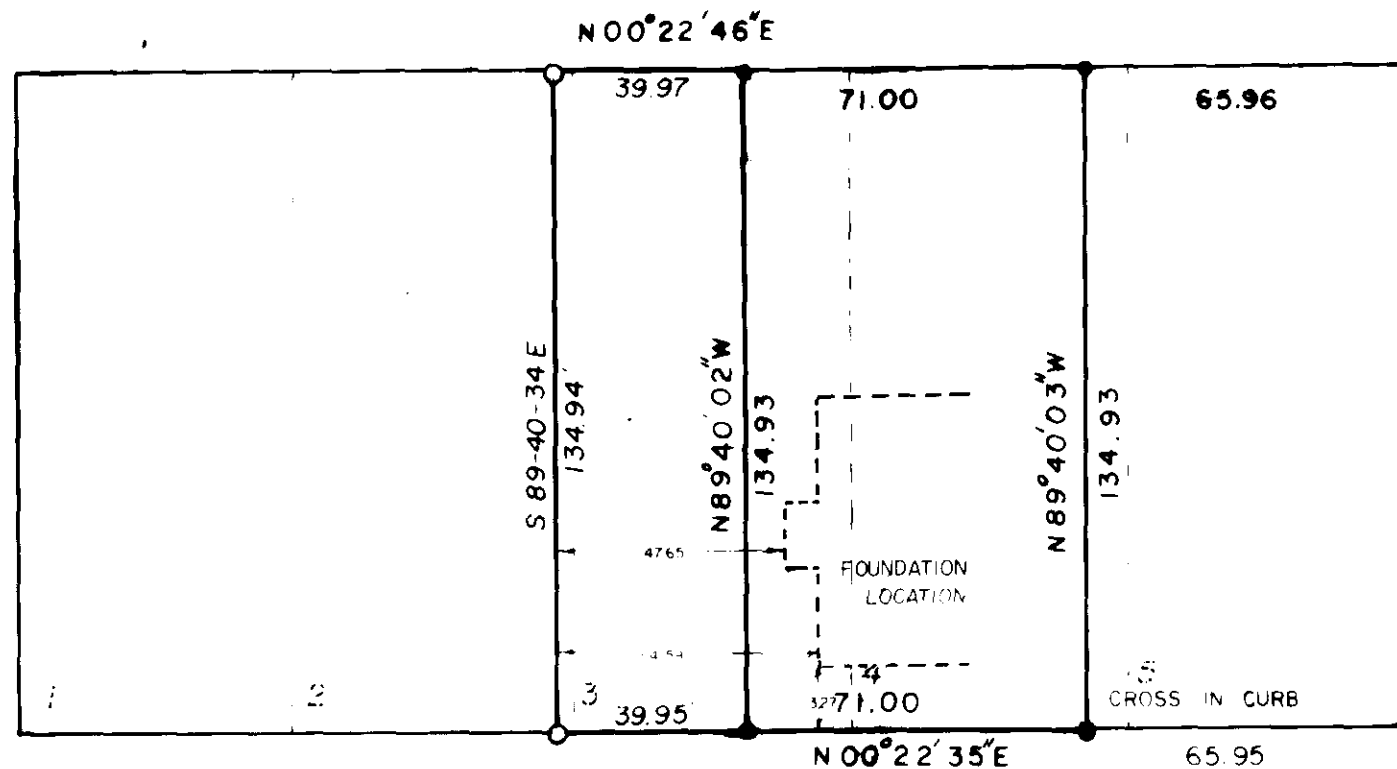
BASIS OF BEARING

FORWARD BEARING AS PUBLISHED BY U.S.C. & G.S.
FROM Δ COLLEGE TO Δ VALLEY

SET CONCRETE NAIL
(ALSO FOUND CONC. NAIL
.13 SOUTH & .03 WEST
OF MY NAIL.)

N 89° 41' 00" W
369.93 (370.00)

MAIN ST



WASHINGTON ST

369.86 (370.00)
N 89° 39' 47" W

SET CONCRETE NAIL

LEGEND

- ▲ UNRECORDED MONUMENT
- SET 5/8" RE-BAR WITH PLASTIC CAP MARKED B G A SURVEY MARKER
- CUT CROSS IN DRIVEWAY CURBING
- FOUND MONUMENT (IF RECORD REFERENCE DISTANCE)

SET CONCRETE NAIL

FOUND METAL BOX
WITH LEAD CROSS
HUB TACK IN LEAD PLUG

FOUND METAL BOX WITH
NAIL IN CONCRETE

REFERENCE MATERIAL

UNRECORDED MAP OF SURVEY BY DAVID SLAUGHT
SURVEY 30-74
SURVEY 14-76
1922 MONUMENTATION MAP OF LA GRANDE
REMONUMENTATION MAP OF LA GRANDE
SURVEY FOR QUINCY FONG DATED 6/77

REGISTERED
PROFESSIONAL
LAND SURVEYOR

Gregory T. Blackman

OREGON
JULY 13, 1973
GREGORY T. BLACKMAN
991

BAGETT, GRIFFITH & ASSOCIATES

La Grande, Oregon
Map of Survey

THE S.37 FT. OF LOT 3 AND
THE N.30 FT. OF LOT 2 BLK. 1
GRANDY'S ADDITION TO
LA GRANDE
UNION COUNTY, OREGON

SURVEYED FOR	QUINCY FONG	
SURVEYED BY	G.T.B.	6/77
Scale: 1" = 40'	Drawn by: G.T.B.	6/77

39-77