

REFERENCE MATERIAL

1922 CITY OF LA GRANDE REMONUMENTATION MAP

SURVEY NUMBERS:

79
23-71
24-71

BASIS OF BEARING

FORWARD BEARING AS PUBLISHED BY
THE U.S.C. & G.S. FROM Δ COLLEGE
TO Δ VALLEY.

LEGEND

- FOUND MONUMENT OF RECORD
- SET 5/8" IRON PIN WITH PLASTIC CAP MARKED B G A SURVEY MARKER
- () RECORD DISTANCE AND BEARING
- CENTERLINE EXISTING STREET

**REGISTERED
PROFESSIONAL
LAND SURVEYOR**

Gregory T. Blackman

OREGON
JULY 13, 1973
GREGORY T. BLACKMAN
991

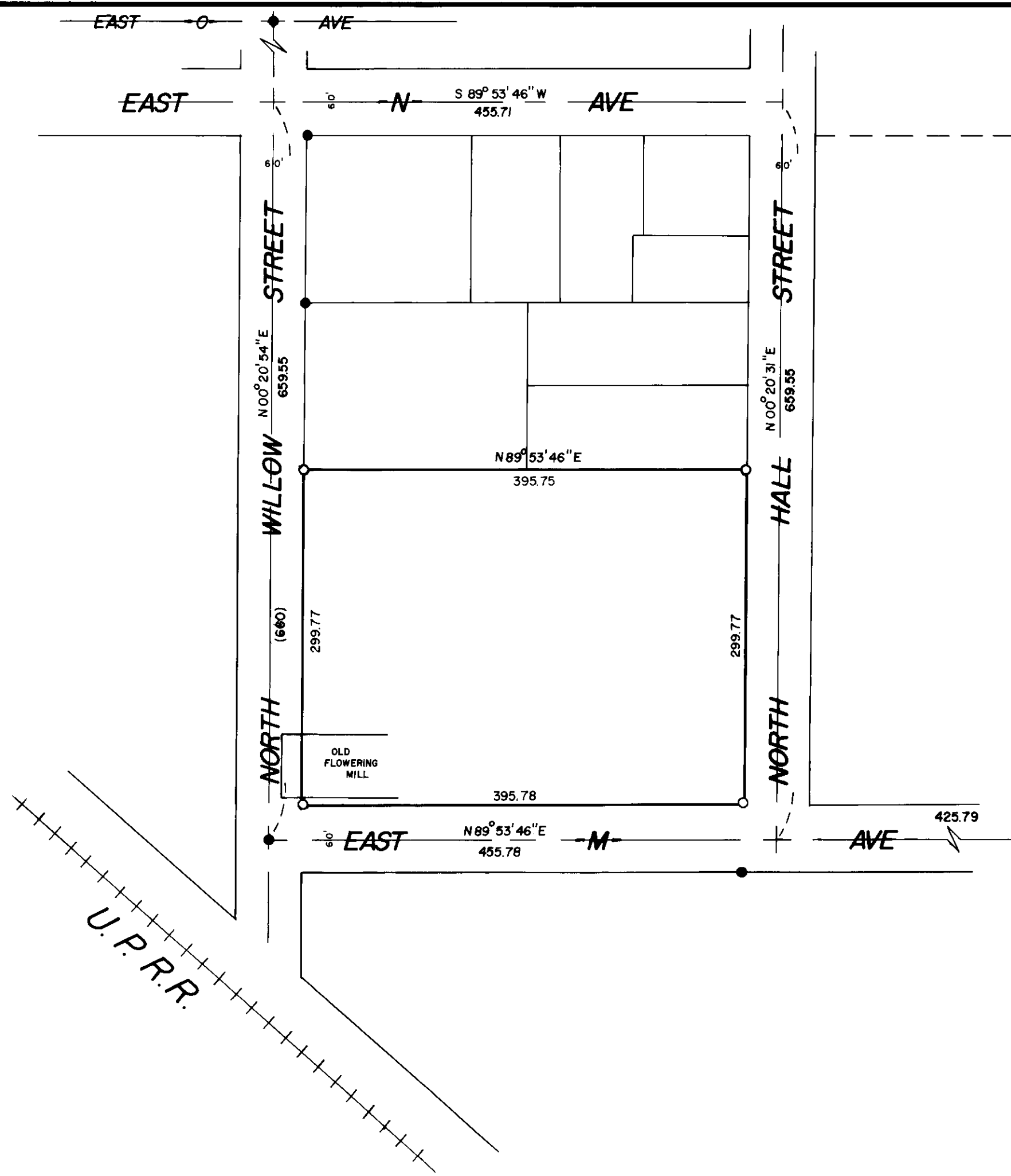
BAGETT, GRIFFITH & ASSOCIATES

La Grande, Oregon

Map of Survey
ALL OF LOTS 5 AND 6, AND
THE SOUTH 100 FEET OF LOTS
3 AND 4 OF BLOCK 8
HONAN'S ADDITION
LA GRANDE
UNION COUNTY, OREGON

SURVEYED FOR	JOHN RAY	
SURVEYED BY	G T B	7/77
Scale: 1" = 100'	Drawn by: S S Z	7/77

SECTION LINE BETWEEN SECTIONS 8 AND 9



60-77