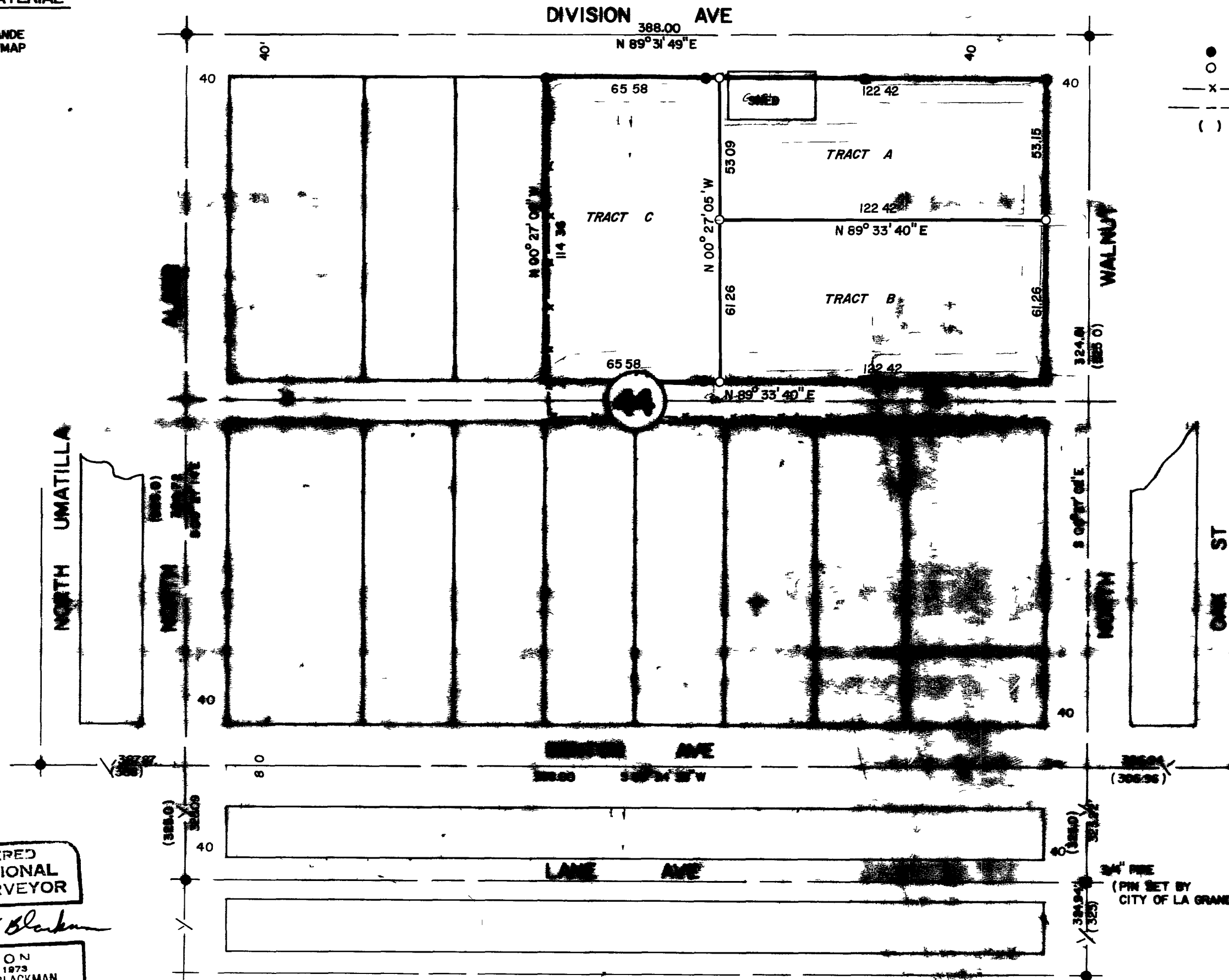


REFERENCE MATERIAL

1922 CITY OF LA GRANDE
 REMONUMENTATION MAP
 SURVEY NO 10-76
 SURVEY NO 23-77

LEGEND

- FOUND MONUMENT OF RECORD
- SET 5/8" X 30' REBAR
- x- EXISTING FENCE
- - - CENTERLINE OF STREET
- () RECORD DISTANCE AND BEARING



BASE OF BEARING
 FORWARD BEARING AS PUBLISHED BY THE
 U.S.C. & G.S. FROM COLLEGE TO WILLEY

REGISTERED
 PROFESSIONAL
 LAND SURVEYOR

Gregory T. Blackman

OREGON
 JULY 13 1973
 GREGORY T. BLACKMAN
 991

SAGETT, CRIFTON & ASSOCIATES 1000 1/2 1000 1/2		
LOTS 1, 2, 3, 4, 5, BLOCK 44 RIVERSIDE ADDITION TO LA GRANDE WASH. COUNTY, OREGON		
SURVEYED FOR	DEAN HARRISON	
SURVEYED BY	G.T.B.	8/77
Scale: 1" = 40'	Drawn by: S.S.Z.	8/77