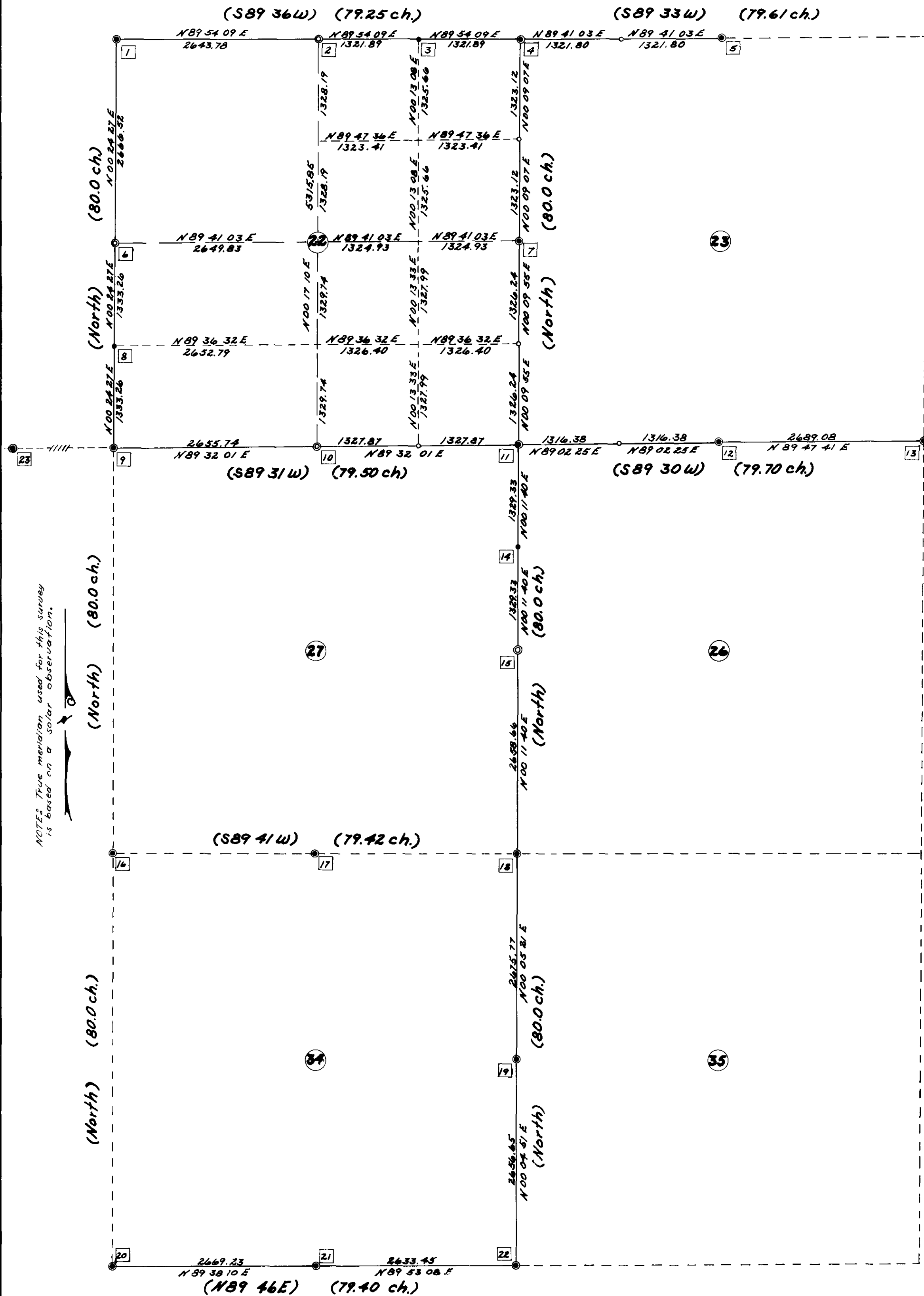


RECORD of SURVEY
ROCKWALL SURVEY BOISE-CASCADE TRACT
SECTION 22, T2N, R39E W1M
UNION COUNTY OREGON
Scale 1"=1000 **Date 12-12-77**



NOTE: True meridian used for this survey is based on a solar observation.

- 1 $\frac{1}{4}$ S14/S15 10" Doug. Fir N 74 W 25.3 ft. New
 S21/S22 12" Larch N 58 E 44.0 ft. New
 S21/S22 13" Pine S 22 E 20.9 ft. New
 13" Larch S 42 W 31.6 ft. New
- 2 $\frac{1}{4}$ S15 7" Pine S00 47 W 56.6 ft. New
 S22 10" Pine N17 35 E 90.7 ft. New
- 3 $\frac{1}{4}$ S15 6" Larch N 28 E 40.6 ft. New
 S22 14" Pine S 35 E 11.9 ft. New
- 4 S15/S14 22" Pine N 47 W 89.1 ft. Orig.
 S22/S23 6" Pine N 42 E 40.5 ft. New
 S22/S23 8" Doug. Fir S 56 E 12.5 ft. New
 8" Pine S 47 W 46.0 ft. New
- 5 $\frac{1}{4}$ S14 30" Pine S 13 E 62.1 ft. Orig.
 S23
- 6 $\frac{1}{4}$ S21/S22 12" Pine N 18 W 62.9 ft. New
 11" Pine N 26 E 16.8 ft. New
- 7 $\frac{1}{4}$ S22/S23 6" Doug. Fir N 50 E 19.8 ft. New
 7" Doug. Fir S 62 W 48.3 ft. New
- 8 $\frac{5}{16}$ S21/S22 14" Larch N 8 W 114.6 ft. New
- 9 S21/S22 14" Pine N 04 W 119.9 ft. New
 S28/S27 12" Pine N 44 E 102.2 ft. New
 14" Pine S 76 E 122.8 ft. New
 16" Pine S 28 W 71.80 ft. New
- 10 $\frac{1}{4}$ S22 15" Doug. Fir N 58 W 2.0 ft. New
 S27 4" Larch S 03 E 8.2 ft. New
- 11 S22/S23 7" Pine N 47 E 69.1 ft. New
 S27/S26 7" Pine S 62 E 89.9 ft. New
 9" Pine S 75 W 125.3 ft. New
 19" Pine N 37 W 77.1 ft. New
- 12 $\frac{1}{4}$ S23 6' 16x12x8" stone in mound stone,
 placed 9/8" iron pin along side.
 S26
- 13 S23/S24 5" Fir N 70 E 21.3 ft. New
 S24/S25 10" Fir S 58 E 24.5 ft. New
 11" Fir S 41 W 48.3 ft. New
 4" Larch N 21 W 16.3 ft. New
- 14 N 1/16 S27/S26 9" Pine S 82 W 3.9 ft. New
 10" Pine N 12 E 35.1 ft. New
- 15 $\frac{1}{4}$ S 27 S28 Corner lies in a plowed field,
 dia not set anything at location.
- 16 S27/S26 Found part of corner accessories, did
 S34/S35 not reset anything during this survey.
- 17 $\frac{1}{4}$ S 21 7" Larch N 65 W 1.7 ft. New
 S 34 12" Larch S 50 E 26.0 ft. New
- 18 S27/S26 Found corner stone and accessories as was
 S34/S35 reset by Arthur Graham ORLS 562 in Aug. 1962.
- 19 $\frac{1}{4}$ S34/S35 Found corner, truck axel and accessories as was
 reset by Arthur Graham ORLS 562 in Aug. 1962.
- 20 S33/S34 Found a Brass Cap, buried beneath
 S41/S3 the surface in the intersection of County roads.
- 21 $\frac{1}{4}$ S 34 Corner location is at intersection of N-S fence line
 S 3 and 1/2 of county road.
- 22 S34/S35 Found corner accessories as used in survey by
 S31/S2 Arthur Graham ORLS 562, dated Aug. 1962.
- 23 $\frac{1}{4}$ S21 16" Pine N 54 W 46.5 ft. New
 S28 8" Doug. Fir S 25 W 37.6 ft. New.

CERTIFICATE OF SURVEY :
 I, James H. Hambleton being a registered Land Surveyor in the State of Oregon, do hereby certify that this plat correctly represents a survey made by me or under my direction, for Boise Cascade Lumber Co., using public and private records and in conformance with the BLM manual and the laws of the State of Oregon.

James H. Hambleton
 ORLS 645

- LEGEND :**
- Original Corner found this survey.
 - Corner set by proportioning this survey.
 - Subdivisional corner set.
 - ◌ Subdivisional corner - Not Set -
 - Line occupied this survey.
 - - - Line Not occupied this survey.
 - Description of corner.
 - () GLO Distance and bearing.

REGISTERED
 PROFESSIONAL
 LAND SURVEYOR

James H. Hambleton

108-77