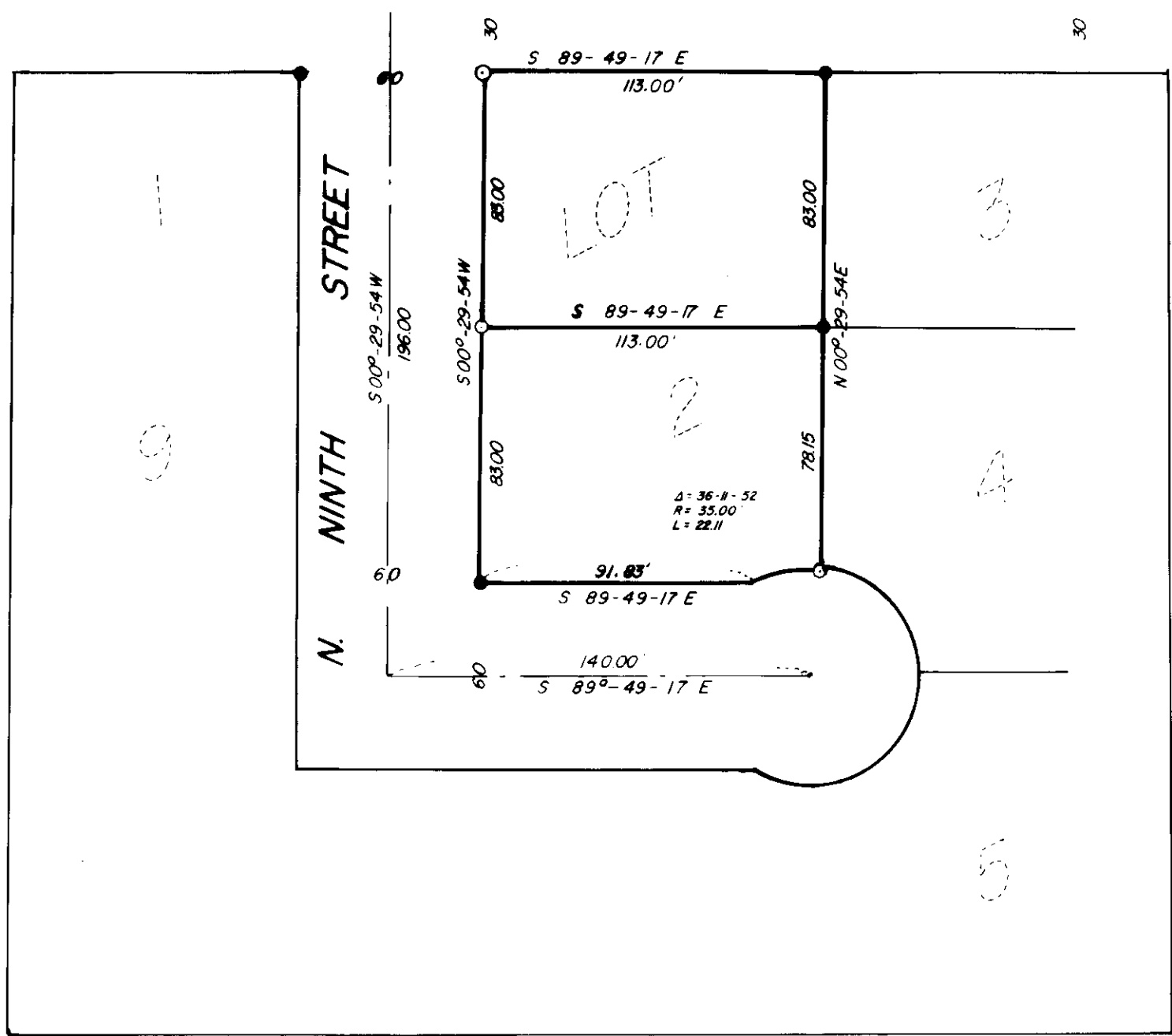


DELTA

STREET

S 89°-49'-17"E



BASIS OF BEARING
 ORIGINAL PLAT OF CATHERINE CREEK III

REGISTERED PROFESSIONAL LAND SURVEYOR

Gregory T. Blackman

OREGON
 JULY 13, 1978
 GREGORY T. BLACKMAN
 991

LEGEND

- FOUND MONUMENT OF RECORD
- SET 5/8" x 30" IRON PIN
- SET 1/2" x 24" IRON PIN

BAGETT, GRIFFITH & ASSOCIATES
 La Grande, Oregon

Map of Survey
LOT 2
CATHERINE CREEK III ADDITION TO UNION
 UNION COUNTY, OREGON

SURVEYED FOR	BOYD D. ABLES	
SURVEYED BY	GTB	12/77
Scale: 1" = 50'	Drawn by: GTB	12/77

110-77