

OREGON STATE PARKS & RECREATION DIVISION SURVEY  
 N.E. 1/4 SECTION 20, T.3S., R.36E., W.M.  
 RED BRIDGE STATE PARK  
 UNION COUNTY

SCALE: 1" = 400' SEPTEMBER 14, 1987

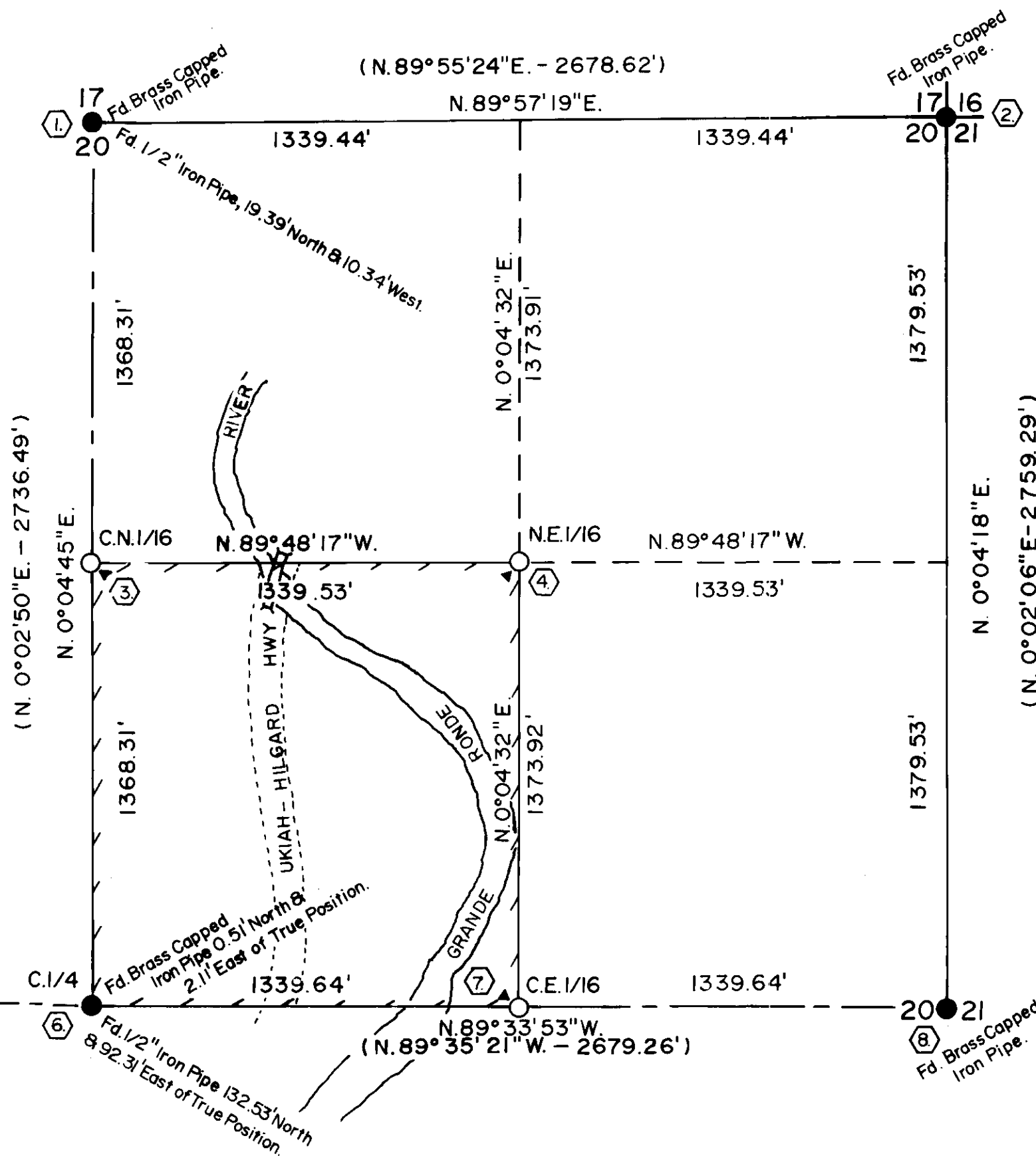
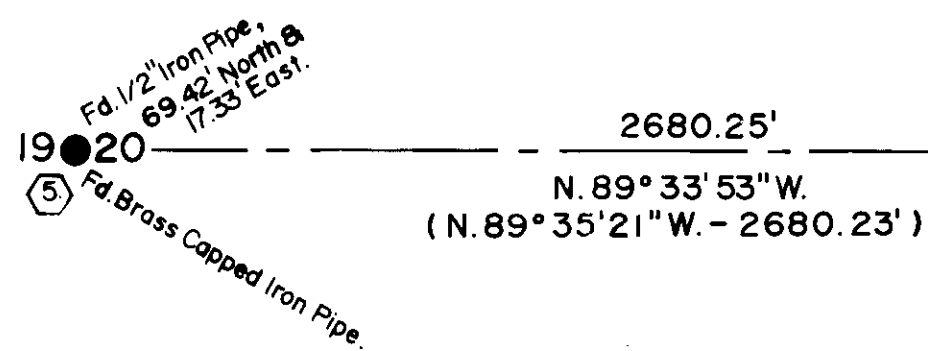
- Indicates Found Monument.
- Indicates Set 5/8" x 30" Iron Rod With Yellow Plastic Cap Marked "OREGON STATE PARKS".
- ▶ Indicates Set Orange Carborundum Post With Decal Marked "PROPERTY BOUNDARY - STATE PARK LAND BEHIND THIS SIGN".
- ┆ Indicates State Park Boundary.
- ⊙ Indicates See Accompanying "OREGON CORNER RESTORATION FORM" With Corresponding Number.

NARRATIVE

The purpose of this survey was to establish the boundary of Red Bridge State Park in the N.E. Quarter of Section 20, T.3S., R.36E., W.M. of Union County. The bearings are from Solar Observation, Local Hour Angle method was utilized. Control was established using a Pentax, PX-10D, Total Station. The W.1/4, E.1/4, N.1/4, C.1/4, and N.E. Section Corner were tied to the control, upon evaluation of field data with Howard L. Perry's survey a good correlation existed, however we agree with Perry's shown position of the C.1/4 on his plat but find actual location to be 0.51' North and 2.11' East of True Position. The Parks Survey Crew, R. Hill-H. Hanson-R. Hemmer, subdivided the N.E.1/4 using the True position for the C.1/4 and set the remaining Park Corners. Then marked boundary lines with lath and nailed Park Boundary signs to trees at frequent intervals.

OREGON STATE PARKS  
 525 TRADE ST. S.E.  
 SALEM, OR. 97310

REGISTERED  
 PROFESSIONAL  
 LAND SURVEYOR  
*John E. Hollingsworth*  
 OREGON  
 JULY 9, 1969  
 JOHN E. HOLLINGSWORTH  
 691



UNION COUNTY  
 SURVEYOR  
 Date Received 10-8-87  
 Date Filed 10-21-87  
 By GLAUGHTER DEARY  
 File No. 29-87