

BASIS of BEARING

Forward bearing as published by the U.S.C. and G.S. from Δ COLLEGE to Δ VALLEY Dated 1946.

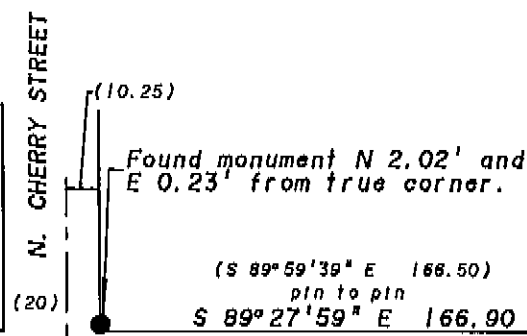
REFERENCE MATERIAL

UNION COUNTY SURVEYS

85
8-67
22-76
74-79
22-82
35-84

UNION COUNTY DEED RECORDS

Microfilm No. 129427



Monument believed to be destroyed by sewer line work.

Concrete monument found but appeared to be disturbed.

LEGEND

- Set 5/8" x 30' iron pin (rebar) with plastic cap marked BGA SURVEY MARKER.
- Found 1/2" iron pin (rebar) from survey 22-76
- ▲ Found 1/2" iron pin (rebar) from Plat of Helton Subdivision.
- Found 5/8" iron pin (rebar) from Plat of Helton Subdivision.
- △ Position of centerline intersection as determined from survey 22-82.
- Centerline
- - - East section line of Section 5
- x-x- Fence line
- () Record information from survey 22-76, also street widths
- [] Record information from Plat of Pratt's Subdivision
- [] Record information from Plat of Helton Subdivision
- [[]] Record information from deed microfilm no. 129427
- ⊙ Found monument as per Union County Monumentation Records

NARRATIVE

This survey was performed at the request of Mr. Ray Verbout in order to monument his tract corners. To establish the centerline of X Avenue in the vicinity of Mr. Verbout's tract, I use survey 22-76 to determine its intersection with the East line of Section 5, at a point 1977.33' southerly from the northeast corner of Section 5 and drive westerly to the position of the centerline intersection of X Avenue and N. Willow Street. The position of the intersections of X Avenue and N. Willow Street and X Avenue and N. Willow Street were determined from field files of Survey Number 22-82. The monuments have since been destroyed or disturbed as shown. I then give full record distance from the East line of Section 5 to the lots and blocks in Pratt's Subdivision. I use the record bearing determined from Pratt's Subdivision for the bearing of the north-south lines of this tract. Along with other lots in Pratt's Subdivision Mr. Verbout owns the South 46.25 feet of Lots 17 and 18 of Block 2. I find that the South line of Helton Subdivision (which was a replat of part of Pratt's Subdivision) leaves approximately the south 54' of Lots 17 and 18 of Block 2, thereby leaving approximately a 7.5' gap between the north line of this tract and the south line of Helton Subdivision. I also find that the fence lines at the south, north, and east lines of this tract encroach onto the adjoining tracts. The house located on this tract also encroaches 5' over the east line of this tract. These conditions were made known to Mr. Verbout.

UNION COUNTY SURVEYOR

Date Received 11/8/91

Date Filed 11/13/91

By Gregory T. Blawie

File No. 056-1991

REGISTERED PROFESSIONAL LAND SURVEYOR

Rick G. Robinson

OREGON JULY 17, 1980

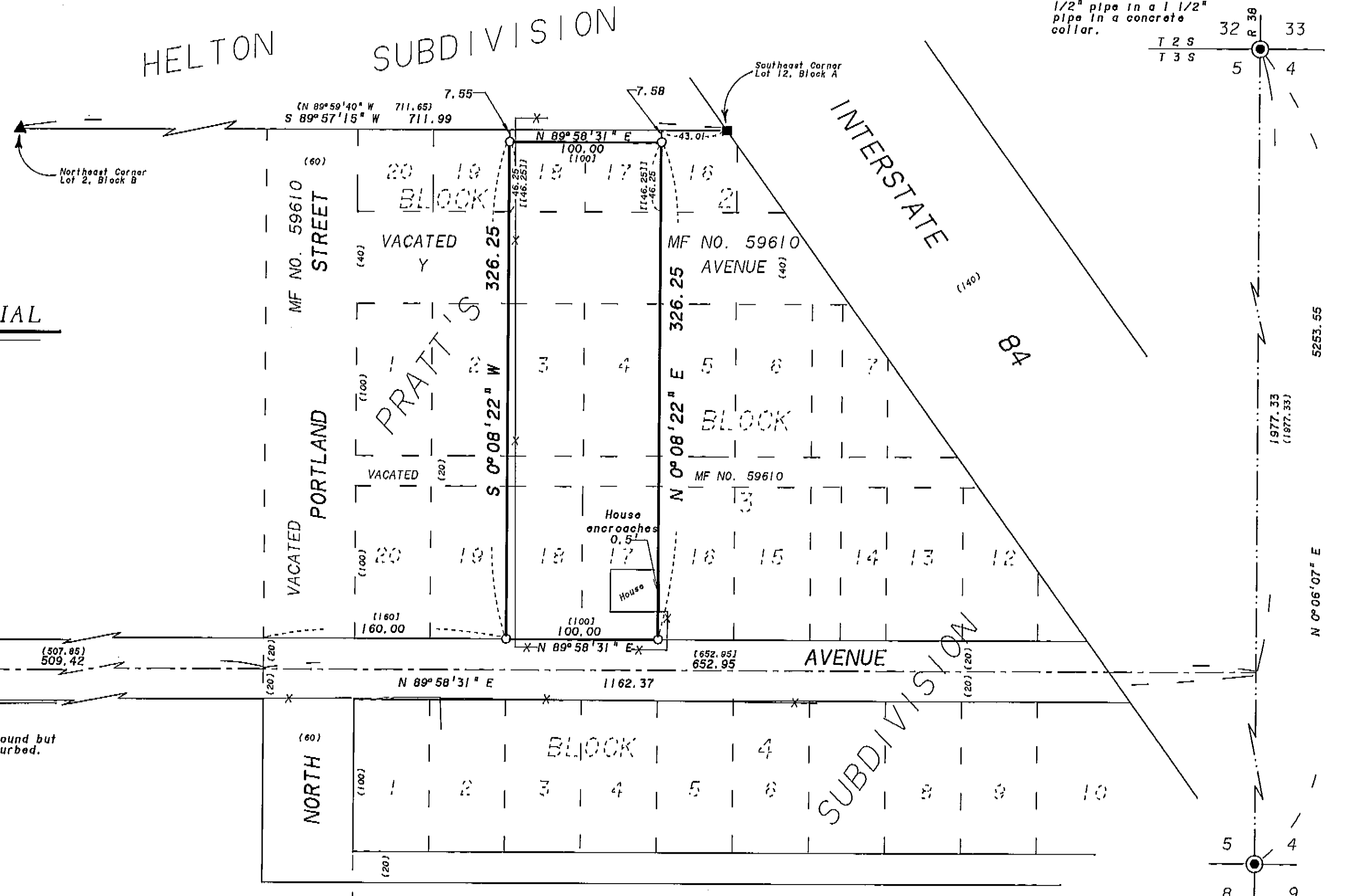
RICK G. ROBINSON 2219

BAGETT-GRIFFITH & ASSOCIATES
LaGrande, Oregon
Map of Survey

Lots 3, 4, 17, and 18 of Block 3 and the South 46.25 feet of Lots 17 and 18 of Block 2 in Pratt's Subdivision.

UNION COUNTY, OREGON

SURVEYED FOR	Ray Verbout
SURVEYED BY	RGR 11-91
Scale: 1" = 60'	Drawn by: JPP 11-91



Survey Number 056-1991