

BASIS OF BEARING

The East line of the Southeast quarter of Section 12, Township 3 South, Range 40 East of the Willamette Meridian, as being North 2°35'57" West. (Same Basis of Bearing as Union County Survey Numbers 22-86, 29-86 and 33-89)

SOLAR OBSERVATION INFORMATION FROM SURVEY NUMBER 22-86
(Hour Angle Method)

Date June 17, 1986
Latitude 45°10'07"
Longitude 117°45'06"
Time 14:00:08 (GCT)

HISTORY OF SURVEYS

The Northwest corner of Section 2 was originally established by Timothy W. Davenport under GLO contract number 102, dated July 20, 1863.

The South line of Sections 11 and 12, the West line of Sections 2 and 11 and the subdivision of Township 3 South, Range 40 East, except Sections 1, 2, 11, 12, 24, 25, 26, 35 and 36 were established by David T. Thompson under GLO contract number 103, dated September 3, 1863.

The North and East lines and subdivision of Sections 1, 2, 11 and 12 were originally established by W.B. Barr under GLO contract number 355, dated June 14, 1880.

The East line of Section 12 was retraced by Alonzo Gesner under GLO contract number 683, dated June 7, 1898.

The South line of Section 12 was retraced by Duane I. Griffith, OPLS 644, on Union County Survey Number 16-73.

The East line of Sections 1 and 12 and the North line of Sections 1 and 2 were retraced by William L. Hanley, OPLS 1639, on Union County Survey Number 24-90.

Survey Numbers 22-86, 29-86 and 33-89 Located the National Forest Boundary in Townships 3 and 4 South, Ranges 40 and 41 East. The basis of bearing observed on Survey Number 22-86 has been used on these surveys, all by Duane I. Griffith, OPLS 644.

LEGEND

- Found brass or aluminum monument as per Union County monumentation records. (See History of Surveys for individual index numbers)
- ⊙ Set 2 1/2"x30" aluminum monument at position determined from original GLO survey evidence
- ⊙ Set 2 1/2"x30" aluminum monument at position determined by survey.
- () Record bearing and distance of GLO survey by W.B. Barr
- () Record bearing and distance of GLO survey by David T. Thompson
- () Record bearing and distance of GLO survey by Alonzo Gesner
- (9) Record bearing and distance of survey number 16-73
- (H) Record bearing and distance of survey number 24-90
- Posted National Forest Boundary
- P Privately owned land
- NF National Forest Land
- SFNF Corner searched for but not found

SURVEYOR'S CERTIFICATE

I, Duane I. Griffith, Registered Land Surveyor in the State of Oregon, hereby certify that this plat and the notes hereon, or attached, are a true and correct representation of the survey I made in July, August and October, 1991, at the request of the USDA Forest Service, in accordance with the statutes of the State of Oregon and with the articles of my contract.

I base my survey on the found monuments listed in the History of Surveys. The corners searched for but not found were originally posts with no accessories with the exception of the West 1/4 corner of Section 12. At this particular corner, Mr. Barr calls for two fir bearing trees. At the proportioned position there are no trees within 400 feet. I reestablish the corner by proportion. I accept the existing fence corner at the Southwest corner of Section 2 as being the best available evidence of the original corner position. The fence is harmonious with the surrounding corners set by Mr. Thompson as shown. This does create a shortage along the South line of Section 2. This is a portion of the Barr GLO contract. It is also in the mountainous terrain. Mr. Barr also called a house 3 chains East and 1.5 chains South of the Section corner. I could find no trace of the original structure, however there is a domestic apple tree approximately 90 feet South and 75 feet East of the house call from the corner using the fence corner as the corner position. I then establish the South quarter corner of Section 2 by single proportion.

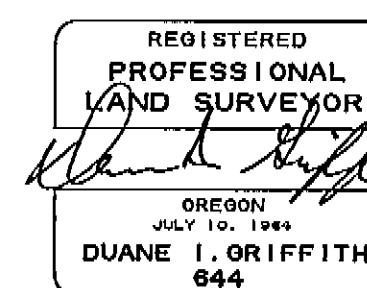
I located the controlling corners and set the proportioned corners utilizing radial lines from prominent points, or points on the valley floor back to the face of the mountain, all within closed loops. The posting with the exception of the West and South lines of the Southeast quarter of Section 12, was also placed radially.

I find the only standing fences along the posted line near the West quarter corner of Section 12 and the Center-South 1/16 corner of Section 2 as shown.

I find no other unusual conditions on this survey.

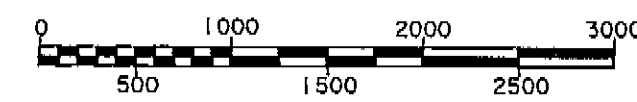
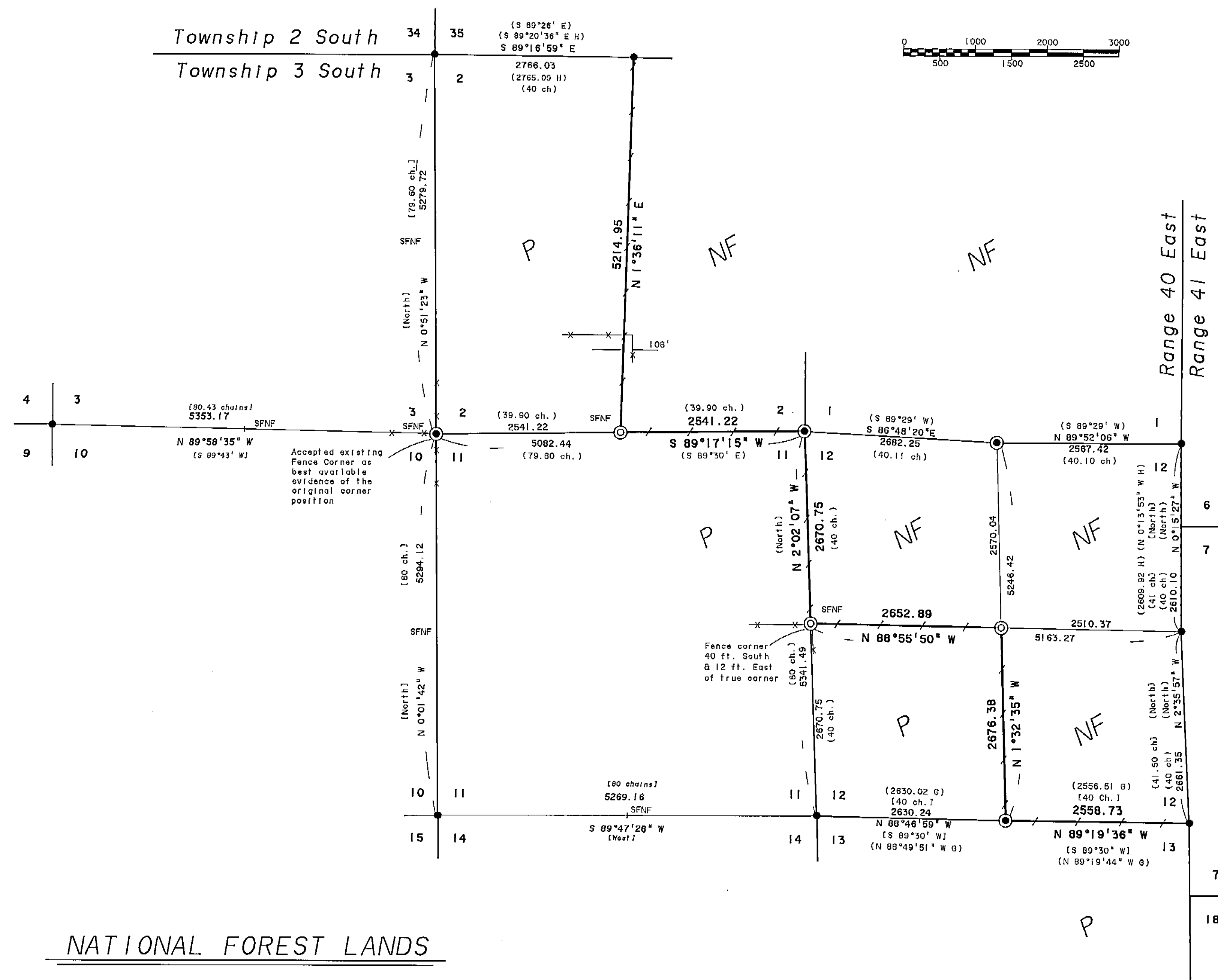
Duane I. Griffith
Duane I. Griffith, OPLS 644
Baggett, Griffith and Associates
2006 Adams Avenue
LaGrande, Oregon 97850

October 29, 1991



UNION COUNTY SURVEYOR	
Date Received	11-7-91
Date Filed	11-8-91
by	R. ROBINSON, Deputy
File No.	057-1991

BAGETT - GRIFFITH & ASSOCIATES LaGrande, Oregon Map of Survey		
National Forest boundary within Sections 2 and 12, Township 3 South Range 40 East, Willamette Meridian UNION COUNTY, OREGON		
SURVEYED FOR	Wallows Whitman National Forest	
SURVEYED BY	d. i. g.	7A8-1991
Scale: 1"=1000'		Drawn by: R. G. R. 9-1991



Magnetic Declination
17° East

NATIONAL FOREST LANDS

TOWNSHIP 3 SOUTH, RANGE 40 EAST OF THE WILLAMETTE MERIDIAN

Section 1- The entire Section

Section 2- The East half

Section 12- The North Half and the Southeast quarter

NOTE:
For monumentation information, see
monumentation sheets filed separately.

The information within these boxes is for
U.S. Forest Service record keeping purposes only.

Examined and accepted for the U.S. Forest Service this 4 day of NOVEMBER, 1991. <i>Proger Green</i> C. O. R.	PROJECT NAME Warm Creek Cadastral Survey (Phase II) CONTRACT NUMBER 00-04M3-1-0451 FIELD BOOKS Traverse Book Numbers 1, 2 and 3 Remonumentation Book Number 1	EQUIPMENT USED Zeiss Th-2 Theodolite Wild TCI600 Total Station Mac Iie (Infrared) Goodimeter Model 76 (Laser)
I certify that this survey was performed at the request of the Willows Whitman National Forest. NATIONAL FOREST SUPERVISOR <i>R.M. Richmond</i> 11/4/91 Signature Date		