

# BASIS OF BEARING

Solar observation taken at a point 330 feet South and 6 feet West of the Northwest corner of Section 31, Township 1 North, Range 41 East of the Willamette Meridian. (Hour Angle Method)

Date: November 15, 1991  
 Latitude: 45° 31' 40"  
 Longitude: 117° 44' 42"  
 Time: 18:19:04 (GCT)

## REFERENCE MATERIAL

Original GLO Notes  
 Union County Monumentation Records  
 Survey Number 53-75  
 Survey Number 4-88

## NARRATIVE

This survey was done at the request of Billy Hindman and Boise Cascade Corporation. The purpose of this survey was to mark the dividing line between the two ownerships. At the owners request, this line was also blazed. I found existing monuments at the North and South ends of the line and found evidence of the original GLO corner at the corner common to Sections 31 and 36. The quarter corner common to Sections 31 and 36 could not be found and I set a new monument at a position determined by survey. I find no other unusual conditions on this survey.

## LEGEND

- Found monument as per Union County Monumentation Records (Unless otherwise noted)
- ⊙ Found original GLO Corner evidence and remonumented with a 2 1/2" x 30" aluminum monument
- ⊙ Set 2 1/2" x 30" aluminum monument at position determined by survey
- ( ) Record bearing and distance of the original GLO survey
- / — Posted line (Blazed trees along this property line)

NOTE:  
 For monumentation information see monumentation sheets filed separately.

REGISTERED  
 PROFESSIONAL  
 LAND SURVEYOR

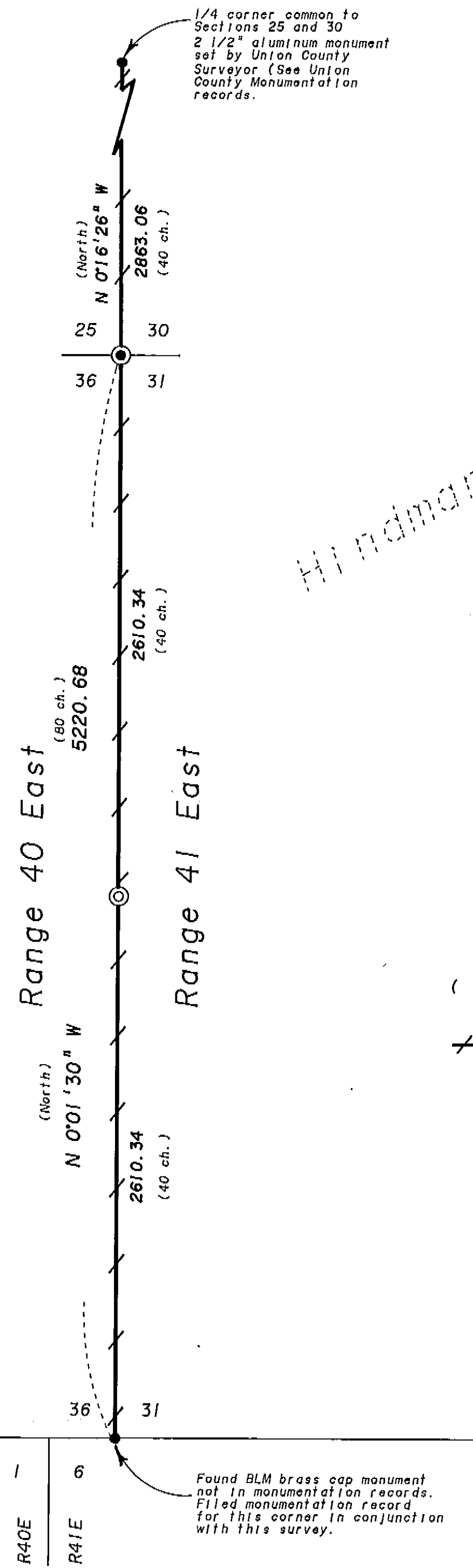
OREGON  
 JULY 13, 1973  
 GREGORY T. BLACKMAN  
 991

UNION COUNTY  
 SURVEYOR  
 Date Received 11-21-91  
 Date Filed 11-21-91  
 By R. ROBINSON, DEPUTY  
 File No. 059-1991

**BAGETT-GRIFFITH & ASSOCIATES**  
 LaGrande, Oregon  
 Map of Survey

The Range line along the West line of S 31 & the S 1/2 of S 30, T1N, R41E and the East line of S 36 & the S 1/2 of S 25, T1N, R40E, Willamette Meridian  
 UNION COUNTY, OREGON

SURVEYED FOR	Billy Hindman - Boise Cascade	
SURVEYED BY	G. T. B.	11-91
Scale: 1"=500'	Drawn by: R. G. R.	11-91



Boise  
 Cascade  
 Corporation

Hindman

Township 1 North

Township 1 South

R40E

R41E

Found BLM brass cap monument not in monumentation records. Filed monumentation record for this corner in conjunction with this survey.

Survey Number 059-1991