

BASIS OF BEARING

Forward bearing as published by the U.S.C. and G.S. from Δ COLLEGE to Δ VALLEY
Dated 1946.

REFERENCE MATERIAL

Plat of Grande Ronde Medical Center
Plat of Grande Ronde Medical Condominium

NARRATIVE

This survey was done at the request of Katherine Bingenheimer on behalf of Indianapolis Life Insurance Company. The purpose of the survey was to monument the exterior of Lot 4 of Grande Ronde Medical Center preparatory to an A.L.T.A. survey of the lot. I found all of the corners of the lot to be monumented with the exception of the angle point along the Westerly line of the lot, which was apparently destroyed by the construction of a new sidewalk. I find the most Westerly corner of the lot remonumented with a 2 1/2" brass cap monument set for the Initial Point of Grande Ronde Medical Condominium, which subdivided Lot 2 of Grande Ronde Medical Center along with additional lands. The brass cap monument has apparently been disturbed by the construction of a concrete conduit for storm drainage as shown. I find the plat of Grande Ronde Medical Center calls setting 1/2" iron pins on the angle points. I find with this survey that 5/8" iron pins with plastic caps have been set. The 5/8" monuments are in the positions called for in the original plat. These points have either been remonumented or mislabeled on the plat. I accept them as representing the corners and angle points of Lot 4 of Grande Ronde Medical Center. I chiseled a 2" cross in the concrete sidewalk at the record position of the destroyed monument. The easements shown are as created by the Grande Ronde Medical Center plat. I find no other unusual conditions on this survey.

REGISTERED
PROFESSIONAL
LAND SURVEYOR

Rick G. Robinson

OREGON
JULY 17, 1988
RICK G. ROBINSON
2219

Renewal Date: Dec. 31, 1994

UNION COUNTY
SURVEYOR

Date Received 7-26-94

Date Filed 7-26-94

By R.G.R. - DGR

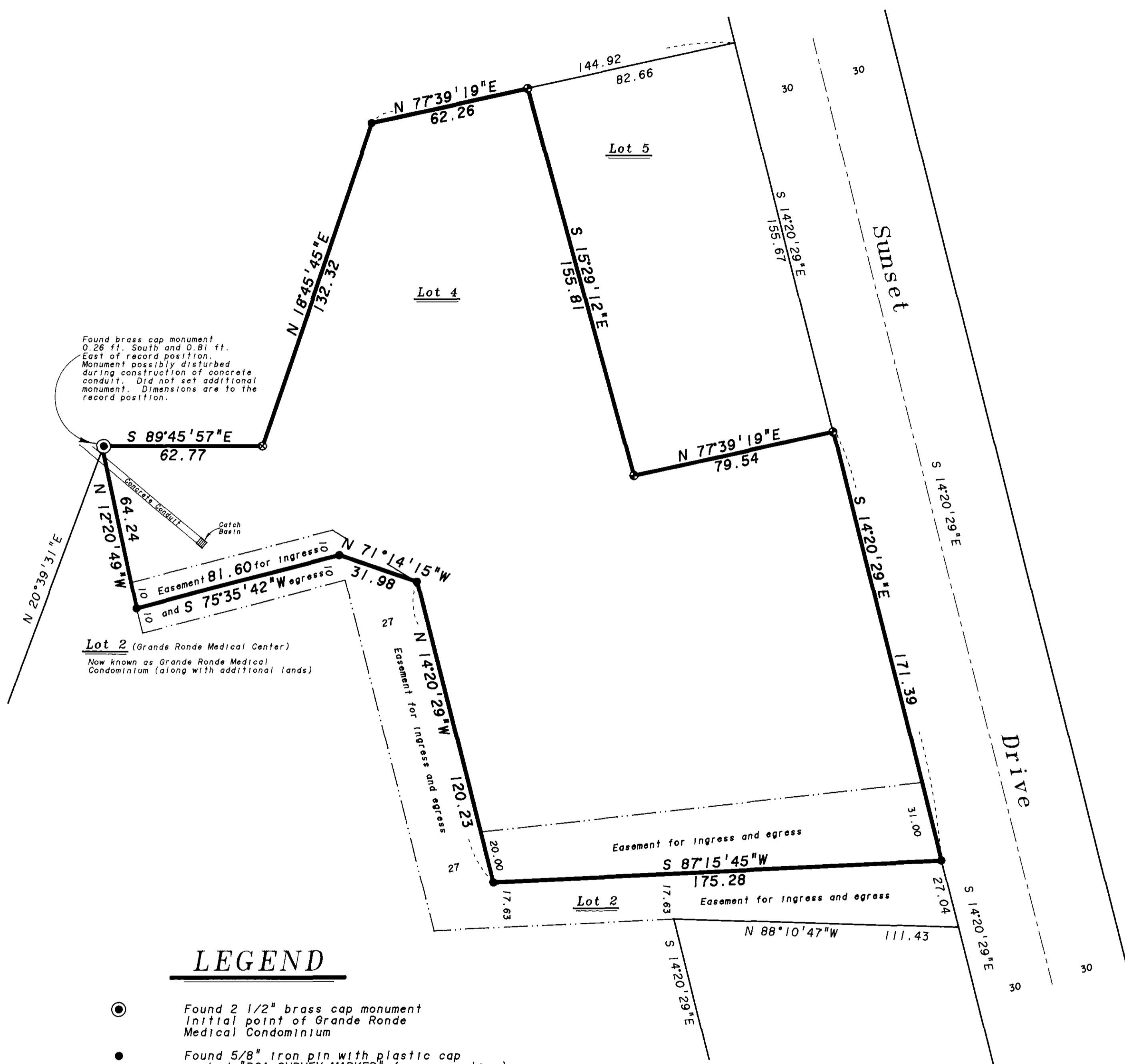
File No. 038-1994

BAGETT-GRIFFITH & ASSOCIATES
2006 Adams Avenue, LaGrande, Oregon

Map of Survey
Lot 4
Grande Ronde Medical Center
a Subdivision situated in
the City of LaGrande
UNION COUNTY, OREGON

SURVEYED FOR	Indianapolis Life Insurance Co.	
SURVEYED BY	R. G. R.	7-94
Scale: 1" = 30'	Drawn by: R. G. R.	7-94

SURVEY NUMBER 038-1994



LEGEND

- Found 2 1/2" brass cap monument
Initial point of Grande Ronde
Medical Condominium
- Found 5/8" iron pin with plastic cap
marked "BGA SURVEY MARKER" (see narrative)
- Found 1/2" iron pin set by the plat
of Grande Ronde Medical Center
- ⊗ Chiseled a 2" cross in existing sidewalk
- Easement line
- - - Center line