

OREGON STATE PARKS & RECREATION DEPARTMENT
BOUNDARY SURVEY OF A PORTION OF
BLUE MOUNTAIN FOREST WAYSIDE

W. 1/2, SEC. 36, T. 1 S., R. 35 E., W. M.

UNION COUNTY, OREGON
ON UMATILLA COUNTY LINE

SCALE 1"=400' JUNE 30, 1994

OREGON STATE PARKS
1115 COMMERCIAL ST. NE
SALEM, OR 97310-1001
(503) 378-6821

REGISTERED
PROFESSIONAL
LAND SURVEYOR

Russell T. Pinard

OREGON
JULY 16, 1971
RUSSELL T. PINARD
958

EXPIRES 12-31-94

NARRATIVE

THE PURPOSE OF THIS SURVEY WAS TO ESTABLISH THAT PORTION OF THE "BLUE MOUNTAIN FOREST WAYSIDE" BOUNDARY WHICH LIES WITHIN THE NORTHWEST QUARTER OF SECTION 36, T. 1 S., R. 35 E., W. M., UNION COUNTY, OREGON.

SAID BOUNDARY IS DESCRIBED IN THAT DEED FROM C. A. NORDEN AND ANNA NORDEN TO STATE OF OREGON, RECORDED IN UNION COUNTY RECORDS, BOOK OF DEEDS, VOLUME 86, PAGE 401, DATED FEB. 16, 1927. MONUMENTS WERE SET ON THESE BOUNDARY LINES BY STATE PARKS IN 1990, BUT WERE IMMEDIATELY REMOVED (NOT FILED ON), WHEN IT WAS DISCOVERED THAT THE SOUTH LINE OF SECTION 36 WAS INCORRECTLY ESTABLISHED.

THE CORRECT POSITION OF THE SAID SOUTH LINE WAS ESTABLISHED BY PARKS IN 1992 BY C. S. NO. 026-1992. THE EAST QUARTER CORNER OF SECTION 36 WAS ALSO ESTABLISHED BY PARKS IN 1992 BY C. S. NO. 027-1992. THESE TWO PREVIOUS PARKS SURVEYS WERE USED AS A BASIS OF BEARINGS AND COORDINATES FOR THIS SURVEY (THE SAME CONTROL TRAVERSE WAS USED FOR ALL THREE SURVEYS). THEREFORE, THE MONUMENTS ON THE FIRST TWO SURVEYS ARE SHOWN IN THEIR EXACT "RECORD" POSITION ON THIS SURVEY.

THE SOUTHWEST CORNER OF SECTION 36 WAS ESTABLISHED BY SINGLE PROPORTION ALONG THE TOWNSHIP LINE (ALLOWING FOR CURVATURE) BETWEEN THE NORTHEAST CORNER OF SECTION 2 AND THE SOUTHWEST CORNER OF SECTION 34.

THE QUARTER CORNER OF SECTIONS 35 AND 36 WAS ESTABLISHED BY SINGLE PROPORTION ALONG THE SECTION LINE.

THE CENTER QUARTER CORNER OF SECTION 36 WAS ESTABLISHED BY INTERSECTING THE TWO CENTERLINES.

THE C-N 1/16 CORNER AND THE C-W 1/16 CORNER WERE ESTABLISHED AT THE MIDPOINT BETWEEN THE C 1/4 CORNER AND THE RESPECTIVE NORTH AND WEST 1/4 CORNERS.

THE N 1/16 CORNER BETWEEN SECTIONS 35 AND 36 WAS ESTABLISHED AT THE MIDPOINT BETWEEN THE QUARTER CORNER AND THE SECTION CORNER.

THE NW 1/16 CORNER WAS ESTABLISHED AT THE INTERSECTION OF THE TWO 1/16 LINES.

THE SOUTHWEST CORNER OF THE PARKS PROPERTY WAS ESTABLISHED ON THE QUARTER LINE AT RECORD (SAID VOLUME 86, PAGE 401) DISTANCE OF 450 FEET FROM THE QUARTER CORNER.

THE TWO APPROXIMATE RIGHT OF WAY MONUMENTS ON THE SOUTH LINE OF THE PARKS PROPERTY WERE SET ON THE QUARTER LINE AND 50 FEET (WHEN MEASURED AT RIGHT ANGLES) FROM THE EXISTING PAINTED CENTERLINE OF THE OLD OREGON TRAIL HIGHWAY.

THE THREE MONUMENTS SET BY THIS SURVEY ON THE NORTH LINE OF SECTION 36 WERE SET AT DEED RECORD DISTANCE FROM THE SECTION CORNER, AS PER DEED FROM J. E. SMITH LIVESTOCK COMPANY TO STATE OF OREGON, RECORDED IN UMATILLA COUNTY RECORDS, BOOK VOL. 133, PAGE 102, DATED JUNE 13, 1927. THE BEARINGS AND DISTANCES OF SAID DEED EXACTLY MATCH A SURVEY BY OREGON STATE HIGHWAY DEPARTMENT, DATED APRIL, 1927, WHICH IS FILED AT THE HIGHWAY BUILDING IN SALEM AS DR'G. NO. 3C-10-2.

ALL FOUND OR SET MONUMENTS WERE EITHER ON A CLOSED TRAVERSE OR DOUBLE TIED. EQUIPMENT USED WAS A PENTAX, PX-10D, TOTAL STATION FOR THE CONTROL TRAVERSE AND A TOPCON, FIVE SECOND, GTS-3C TOTAL STATION FOR SETTING MONUMENTS.

NOTES

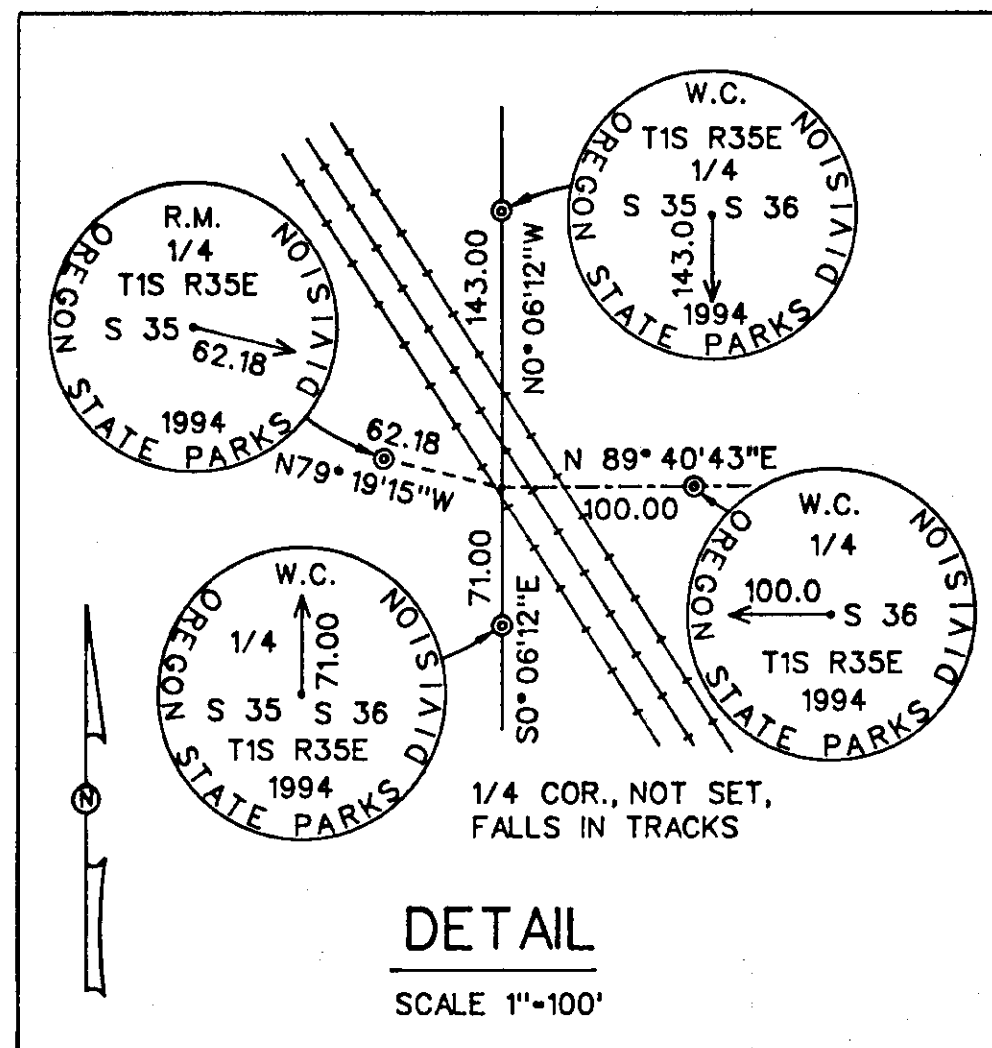
1. THE N 1/16 CORNER OF SECTIONS 35 & 36 WAS ASSUMED TO BE THE PARKS PROPERTY CORNER, EVEN THOUGH THE DEED DESCRIBES THIS POINT AS BEING 1320 FEET NORTH OF THE QUARTER CORNER. THIS PROBABLY WAS THE INTENT OF THE DEED WRITER AS 1320 FEET IS HALF OF THE ORIGINAL G.L.O. DISTANCE FROM QUARTER CORNER TO SECTION CORNER. THIS ASSUMPTION SEEMS PRUDENT AS IT FAVORS THE ADJACENT LAND OWNER AND IT ELIMINATES A SECOND MONUMENT IN THE VICINITY.

2. THE 1891 SURVEY BY THE COUNTY SURVEYOR SHOWS THREE "20" CHAIN MEASUREMENTS ALONG THE TOWNSHIP LINE IN THIS VICINITY. THESE MEASUREMENTS AVERAGE 20.12 CHAINS, FOR A FACTOR OF 1.006. WHEN THIS FACTOR IS APPLIED TO G.L.O. DISTANCES THEY MATCH OUR FIELD MEASUREMENTS VERY CLOSELY (WITHIN 0.13%).

3. BEARING TREES WERE BLAZED, SCRIBED AND MARKED WITH YELLOW TAGS.

LEGEND

- FOUND MONUMENT, AS NOTED
- CALCULATED POINT, NOT SET
- SET 5/8"x30" IRON ROD WITH YELLOW PLASTIC CAP MARKED "OREGON STATE PARKS"
- SET 5/8"x30" IRON ROD WITH 2" ALUMINUM CAP MARKED AS SHOWN
- () A RECORD DATA FROM DEED A
- () B RECORD DATA FROM DEED B
- () G RECORD DATA FROM G.L.O. (GENERAL LAND OFFICE)
- PARK BOUNDARY
- RAILROAD TRACKS
- ✓ SAME OWNER



SEE NOTE 3
BEARING TREES
24" FIR, N 44° 26' E 53.3
22" PINE, N 18° 42' W 88.6

SEE NOTE 3
BEARING TREES
9" FIR, N 52° 00' E 4.3
12" FIR, N 53° 50' W 31.7
15" FIR, S 24° 40' W 19.5
10" FIR, S 48° 20' E 51.4

SECTION CORNER
FD. 2" ALUMINUM CAP
ON 5/8" IRON ROD
BY STATE PARKS, 1991

S 89° 37' 41" E 10637.72
(WEST 160 CH-10560.0)G
G.L.O. x1.006-10623
SEE NOTE 2

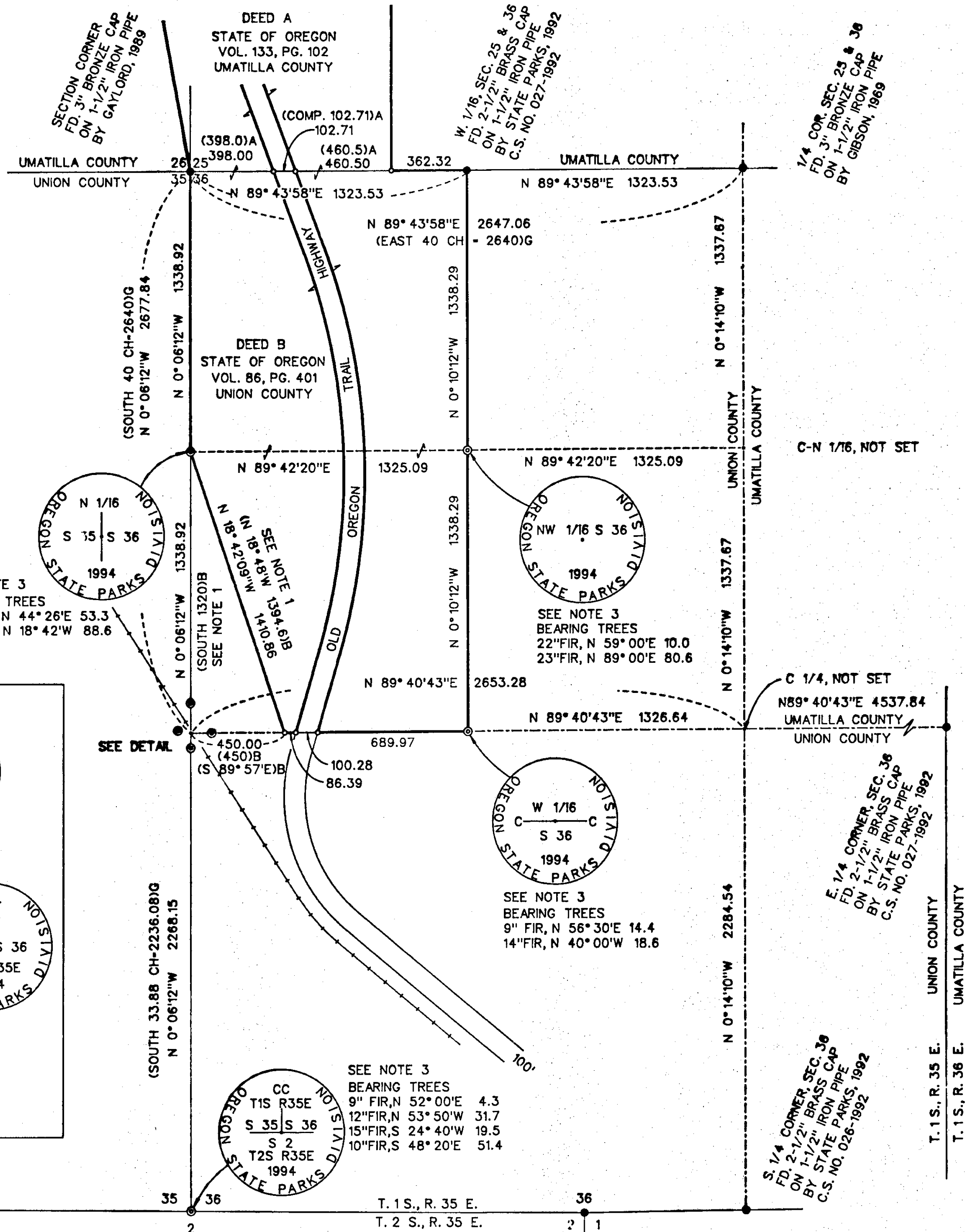
S 89° 38' 44" E 1884.1
(WEST 28.34 CH-1870.4)G
G.L.O. x1.006-1882
SEE NOTE 2

N 89° 14' 54" E 774.44
(WEST 11.66 CH-769.56)G
G.L.O. x1.006-774
SEE NOTE 2

SECTION CORNER
FD. 2-1/2" BRASS CAP
ON 1-1/2" IRON PIPE
BY STATE PARKS, 1992

UNION COUNTY
SURVEYOR

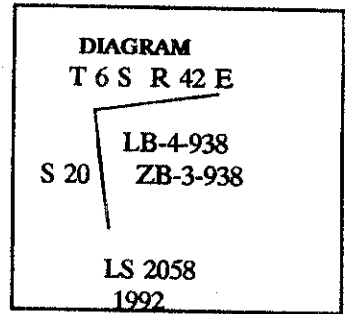
Date Received 8/16/94
Date Filed 8/23/94
Gregory T. Blum
File No. 044-1994



CERTIFIED RECORD OF LAND CORNER MONUMENTATION

History of original corner establishment:

Cor. no. 3, (Zena Bell) identical with cor. no. 4, Lucky Break and on line 1-2, Goldie lodes, both of this survey. Set a galvanized iron pipe, 1 in. diam., 36 ins. long, 24 ins. in the ground, mkd. ZB-3-LB-4-938, from which:



A fir, 14 ins. diam., bears N.15°W., 32.7 ft. dist., mkd. ZB-3-LB-4-938 BT.

A fir, 14 ins. diam., bears N.70°E., 40.8 ft. dist., mkd. ZB-3-LB4-938 BT.

Description of corner evidence found:

Found 1½" pipe in a 24" mound of stone, from which:

A fir, 19" diam., bears N.12°39'W., 31.18', healed blaze.

A fir, 17" diam., bears N.42°57'E., 40.42', open blaze (not legible).

Description of monument and accessories I established to perpetuate the original location of this corner:

Set a 3" diam. U.S.F.S aluminum capped pipe, 30" long, with magnet, 24" in ground and buried found pipe alongside and build mound of stone to cap.

UNION COUNTY SURVEYOR	
Date Received <u>8/18/94</u>	
Date Filed <u>10/23/94</u>	
By <u>[Signature]</u>	
File No. <u>044-1999R</u>	<u>NAFF. Drawer 1-21</u>

REGISTERED
PROFESSIONAL
LAND SURVEYOR
[Signature]
OREGON
JULY 15 1983
RONALD E. STOLL
2058

Office of _____ County of _____
State of _____ I hereby certify that the within instrument was filed in this office
for record on the _____ day of _____, 19____

_____ by _____
(COUNTY OFFICIAL) (DEPUTY)