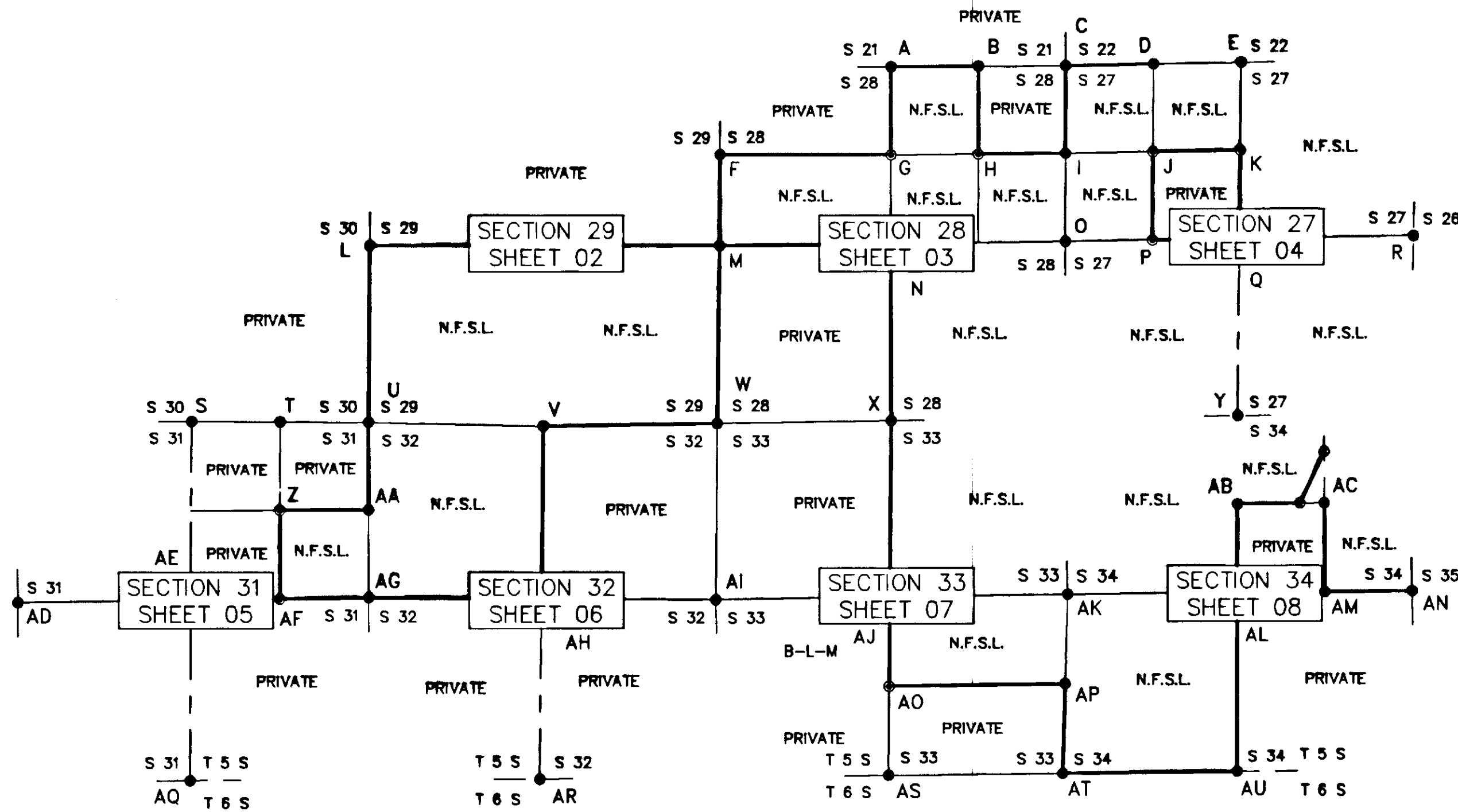


FRAZIER CADASTRAL SURVEY WALLOWA-WHITMAN NATIONAL FOREST



NOTES

BASIS OF BEARING WAS 1991 B-L-M RECORD ON VARIOUS LINES WITHIN THIS TOWNSHIP. THE MAGNETIC DECLINATION FOR THIS SURVEY IS 18 1/2' EAST AS DETERMINED FROM A U.S.G.S. TOPO MAP FOR THIS PROJECT AREA.

THIS SURVEY REPRESENTS A RECORD OF THE PARTIAL RETRACEMENT AND/OR SUBDIVISION OF SECTIONS 27, 28, 29, 31, 32, 33 & 34, T 5 S, R 41 E, W.M., UNION COUNTY, OREGON.

THIS SURVEY WAS PERFORMED AT THE REQUEST OF THE FOREST SUPERVISOR, WALLOWA-WHITMAN NATIONAL FOREST, BAKER CITY, OREGON.

THE PURPOSE OF THIS SURVEY WAS TO DETERMINE THE BOUNDARY LINES BETWEEN THE PRIVATE AND PUBLIC LAND ADMINISTERED BY THE U.S. FOREST SERVICE IN SECTION 27, 28, 29, 31, 32, 33 & 34 AND TO POST TO STANDARD THOSE BOUNDARIES.

THE PROCEDURES USED IN THIS SURVEY WERE IN ACCORDANCE WITH THE CONTRACT SPECIFICATIONS, THE 1973 B-L-M MANUAL AND STATE LAW, RESULTING IN AN ERROR OF CLOSURE OF 1 IN 5000 OR BETTER.

THE EQUIPMENT USED ON THIS SURVEY IS KEPT ADJUSTED AND STANDARDIZED. WE USED A SOKKIA SET 2, 3 OR 4 TOTAL STATION AND LEAP FROGGED A COMPLETE SET UP AT EACH TRAVERSE STATION OR CONTROLLING CORNER.

LOST OR OBLITERATED CORNERS WERE REESTABLISHED IN ACCORDANCE WITH THE B-L-M MANUAL, A COMPLETE DESCRIPTION OF THE CORNERS FOUND, SET OR REESTABLISHED CAN BE FOUND ON PAGE 9 THROUGH 11 OF THIS RECORD OF SURVEY. THE FIELD NOTES FOR THIS SURVEY ARE CONTAINED IN BOOK 1, PAGES 1 - 118 TITLED: FRAZIER CADASTRAL SURVEY. DATED JULY THROUGH OCTOBER 1993.

SURVEYORS CERTIFICATE

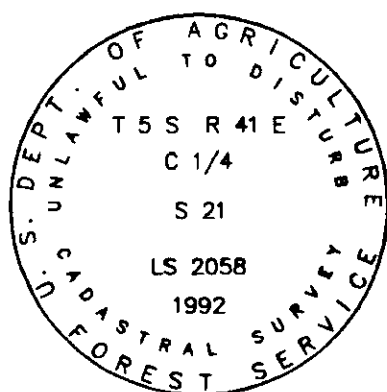
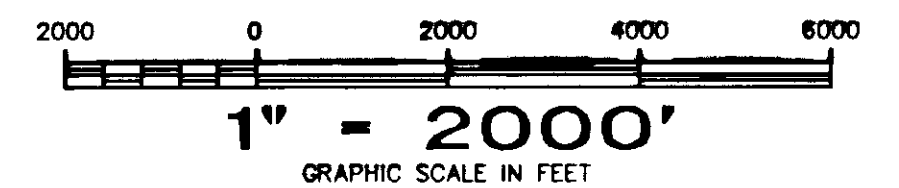
THIS PLAT CORRECTLY REPRESENTS A SURVEY MADE BY ME OR UNDER MY DIRECTION IN CONFORMANCE WITH THE STATUTES OF OREGON AND AT THE REQUEST OF THE FOREST SUPERVISOR, WALLOWA-WHITMAN NATIONAL FOREST DURING THE MONTHS OF JULY THROUGH OCTOBER, 1992. RONALD E. STOLL, L.S. 2058.

HISTORY OF SURVEYS

SECTIONS 27, 28, 29, 31, 32, 33 & 34. IN 1990-1992 PHILIP G. GRIFFIN CADASTRAL SURVEYOR, EXECUTED A DEPENDANT RESURVEY AND SUBDIVISION OF SECTIONS WITHIN THE TOWNSHIP. REFERENCE IS HEREIN MADE TO THESE UNOFFICIAL ADVANCE COPY OF THE FIELD NOTES FOR PRIOR SURVEYS HISTORY AND ACCESSORIES TO THE FOUND MONUMENTATION.

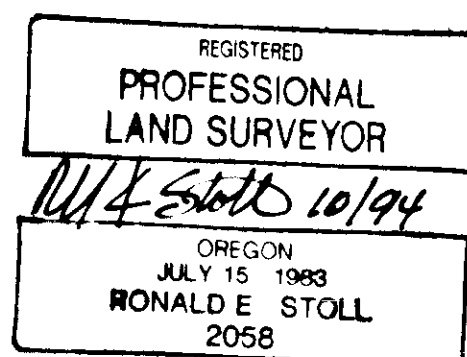
LEGEND

- FOUND B-L-M BRASS CAPPED PIPE MONUMENT, 1991
- ⊙ SET A 3" DIAM. U.S.F.S. ALUMINUM CAPPED PIPE, 30" LONG, WITH MAGNET, MARKED PER B-L-M MANUAL, SEE TYPICAL CAP FOR STANDARD MARKINGS
- [] RECORD BEARING AND/OR DISTANCE, B-L-M, 1991
- ⊗ B-L-M BRASS CAPPED PIPE MONUMENT, 1991, NOT LOCATED
- N.F.S.L. = NATIONAL FOREST SYSTEM LANDS BOUNDARY
- A — AU CORNER RECORD FORMS FILED WITH THE UNION COUNTY SURVEYOR



TYPICAL FOREST SERVICE CAP MARKED PER B-L-M MANUAL

JOB NO. 1234-692-OR
CONTRACT NO. 53-04M3-2-0042
SHEET 1 OF 8



RONALD E. STOLL, R.L.S. 2058

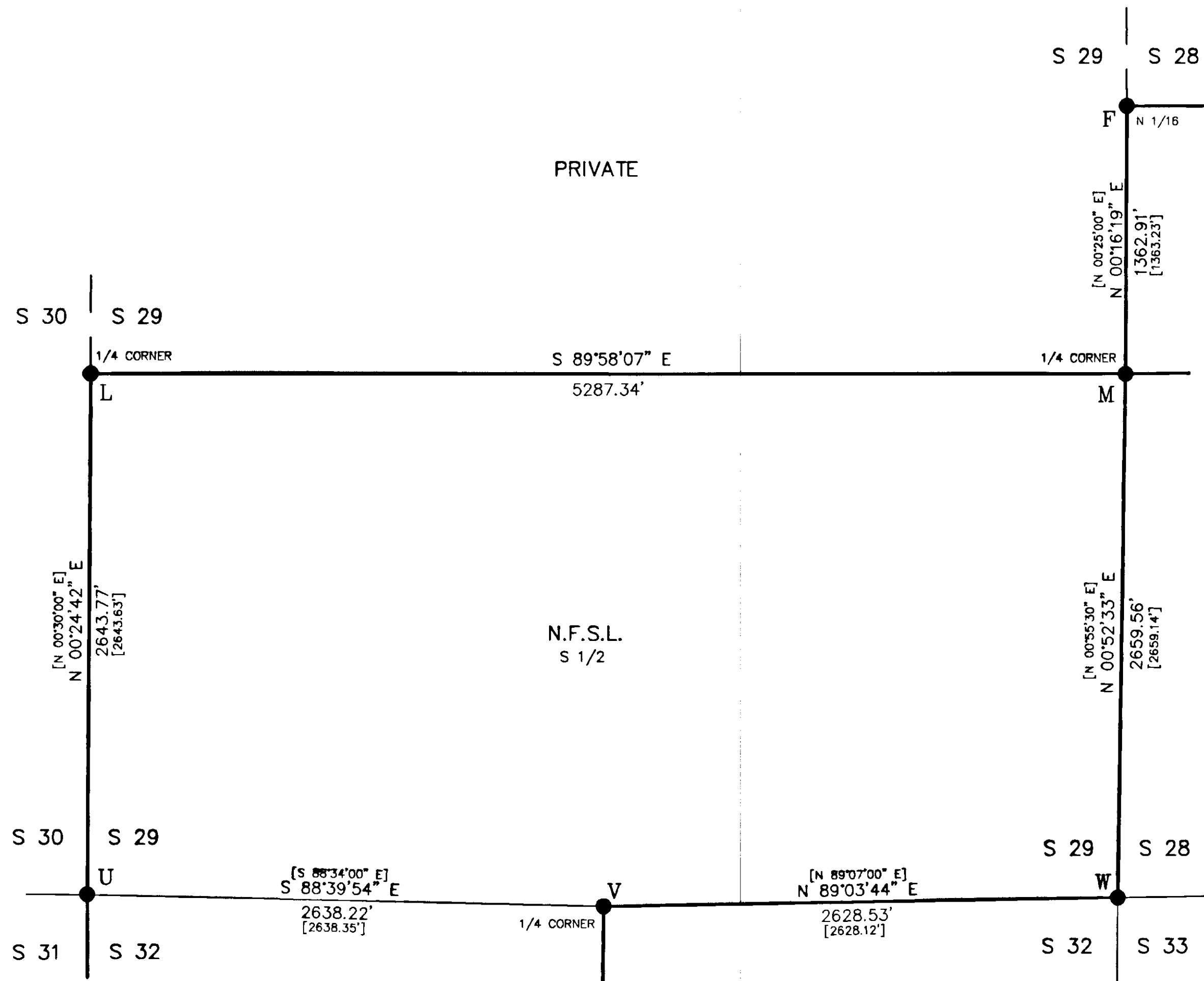
EXAMINED AND ACCEPTED FOR THE U.S. FOREST SERVICE
THIS 20 DAY OF OCTOBER, 1994.
Roger Dean COR
I CERTIFY THAT THIS SURVEY WAS PERFORMED AT THE REQUEST OF THE WALLOWA-WHITMAN NATIONAL FOREST SUPERVISOR.
Ronald E. Stoll
SIGNATURE DATE

A PORTION OF
SECTIONS 27, 28, 29, 31, 32, 33 & 34.
T 5 S R 41 E W.M.
UNION COUNTY, OREGON
RECORD OF SURVEY
RES LAND SURVEYS, INC. 8335 N. PLACITA DADIVOSO
TUCSON, ARIZONA 85704

Survey Number 051-1994

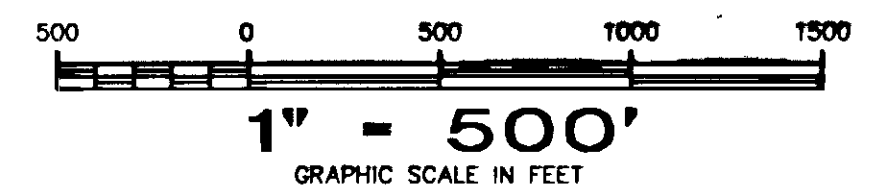
UNION COUNTY SURVEYOR
Date Received 10/21/94
Date Filed 10/22/94
By *Roger Dean*
File No. 051-1994

FRAZIER CADASTRAL SURVEY WALLOWA-WHITMAN NATIONAL FOREST



LEGEND

- FOUND B-L-M BRASS CAPPED PIPE MONUMENT, 1991
- ⊙ SET A 3" DIAM. U.S.F.S. ALUMINUM CAPPED PIPE, 30" LONG, WITH MAGNET, MARKED PER B-L-M MANUAL, SEE TYPICAL CAP FOR STANDARD MARKINGS
- [] RECORD BEARING AND/OR DISTANCE, B-L-M, 1991
- N.F.S.L. = NATIONAL FOREST SYSTEMS LANDS BOUNDARY LINE POSTED TO STANDARD
- W CORNER RECORD FORMS FILED WITH THE UNION COUNTY SURVEYOR



UNION COUNTY SURVEYOR

Date Received 10/21/94

Date Filed 10/22/94

By [Signature]

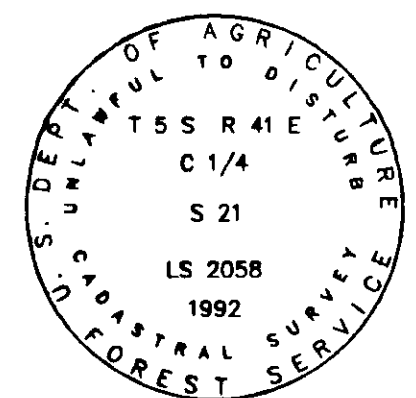
File No. 051-1994

JOB NO. 1234-692-OR
CONTRACT NO. 53-04M3-2-0042
SHEET 2 OF 8

REGISTERED
PROFESSIONAL
LAND SURVEYOR

Ronald E. Stoll 10/94

OREGON
JULY 15 1988
RONALD E. STOLL
2058



TYPICAL FOREST SERVICE CAP
MARKED PER B-L-M MANUAL

RONALD E. STOLL, R.L.S. 2058

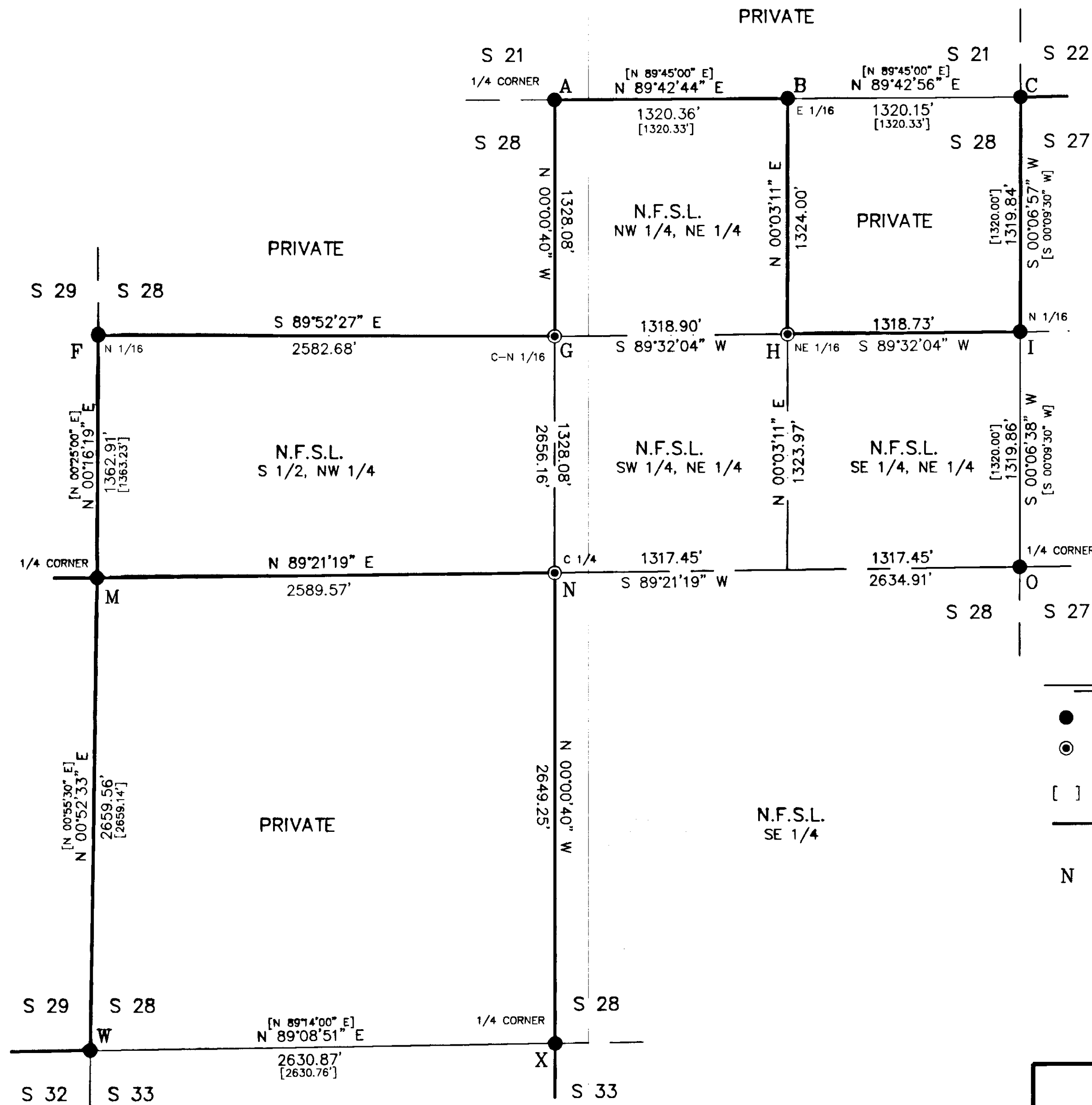
A PORTION OF
SECTION 29
T 5 S R 41 E W.M.
UNION COUNTY, OREGON

RECORD OF SURVEY

RES LAND SURVEYS, INC. 8335 N. PLACITA DADIVOSO
TUCSON, ARIZONA 85704

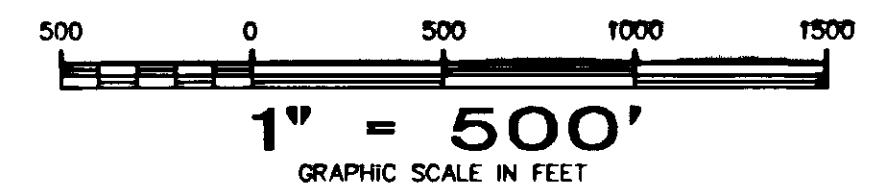
Survey Number 051-1994

FRAZIER CADASTRAL SURVEY
WALLOWA-WHITMAN NATIONAL FOREST



LEGEND

- FOUND B-L-M BRASS CAPPED PIPE MONUMENT, 1991
- ⊙ SET A 3" DIAM. U.S.F.S. ALUMINUM CAPPED PIPE, 30" LONG, WITH MAGNET, MARKED PER B-L-M MANUAL, SEE TYPICAL CAP FOR STANDARD MARKINGS
- [] RECORD BEARING AND/OR DISTANCE, B-L-M, 1991
- N.F.S.L. = NATIONAL FOREST SYSTEMS LANDS BOUNDARY LINE POSTED TO STANDARD
- N CORNER RECORD FORMS FILED WITH THE UNION COUNTY SURVEYOR



A PORTION OF
SECTION 28
T 5 S R 41 E W.M.
UNION COUNTY, OREGON

RECORD OF SURVEY

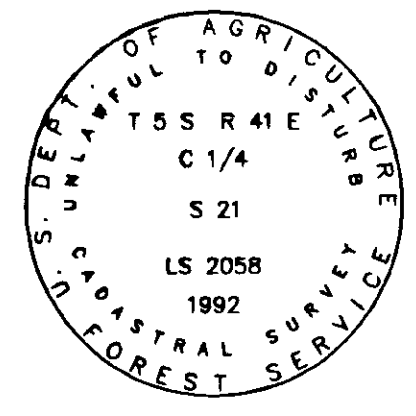
RES LAND SURVEYS, INC. 8335 N. PLACITA DADIVOSO
TUCSON, ARIZONA 85704

UNION COUNTY SURVEYOR
Date Received 10/22/94
Date Filed 10/21/94
By Bryan L. Allen
File No. 051-1994

JOB NO. 1234-692-OR
CONTRACT NO. 53-04M3-2-0042
SHEET 3 OF 8

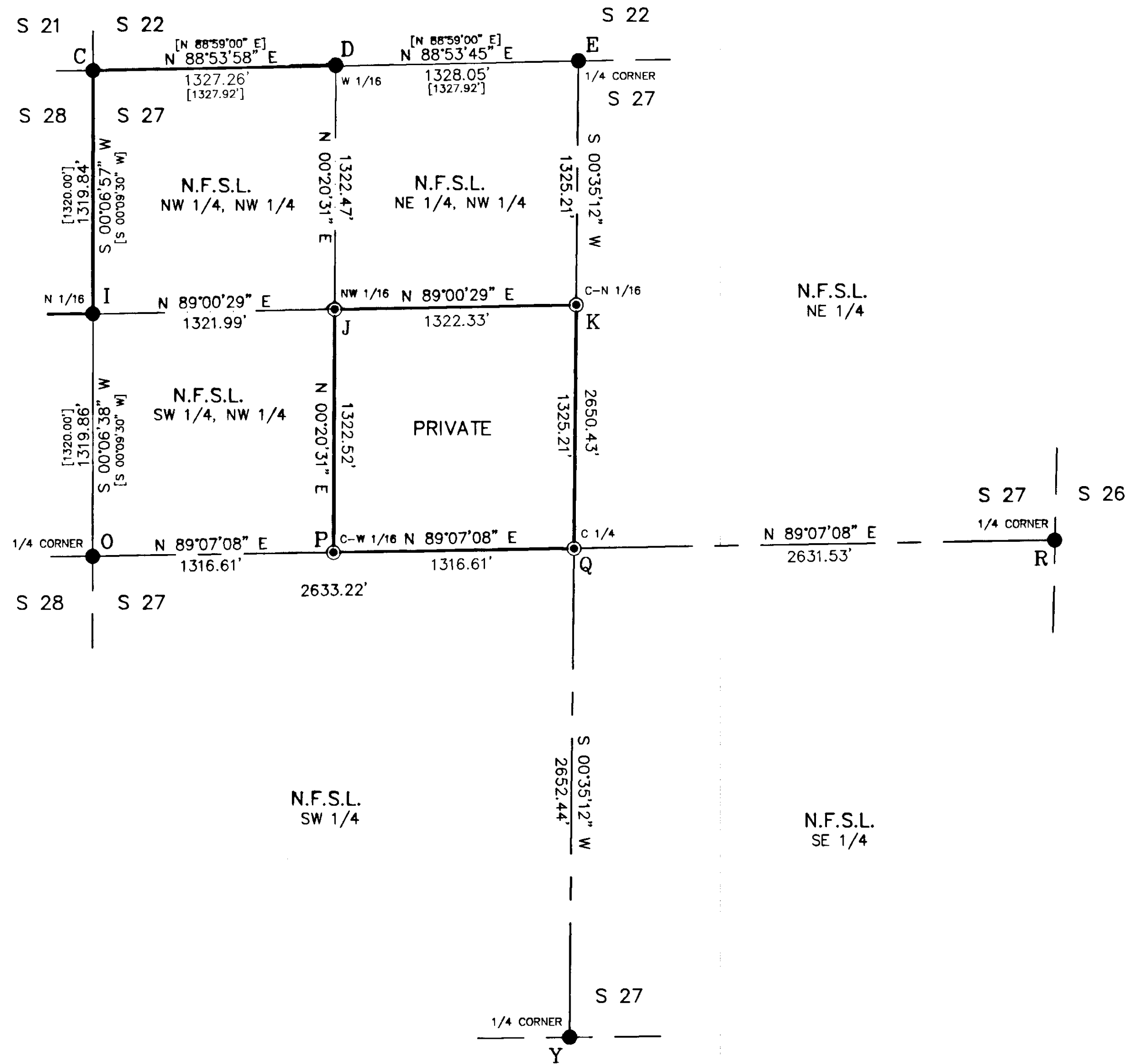
REGISTERED
PROFESSIONAL
LAND SURVEYOR
Ronald E. Stoll 10/194
OREGON
JULY 15 1983
RONALD E. STOLL
2058

RONALD E. STOLL, R.L.S. 2058



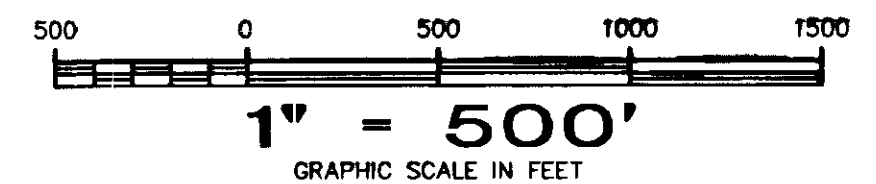
TYPICAL FOREST SERVICE CAP
MARKED PER B-L-M MANUAL

FRAZIER CADASTRAL SURVEY WALLOWA-WHITMAN NATIONAL FOREST



LEGEND

- FOUND B-L-M BRASS CAPPED PIPE MONUMENT, 1991
- ⊙ SET A 3" DIAM. U.S.F.S. ALUMINUM CAPPED PIPE, 30" LONG, WITH MAGNET, MARKED PER B-L-M MANUAL, SEE TYPICAL CAP FOR STANDARD MARKINGS
- [] RECORD BEARING AND/OR DISTANCE, B-L-M, 1991
- N.F.S.L. = NATIONAL FOREST SYSTEMS LANDS BOUNDARY LINE POSTED TO STANDARD
- Q CORNER RECORD FORMS FILED WITH THE UNION COUNTY SURVEYOR



A PORTION OF
SECTION 27
T 5 S R 41 E W.M.
UNION COUNTY, OREGON

RECORD OF SURVEY

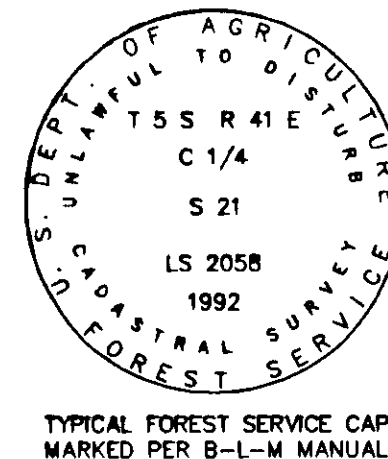
RES LAND SURVEYS, INC. 8335 N. PLACITA DADIVOSO
TUCSON, ARIZONA 85704

UNION COUNTY SURVEYOR
Received 10/21/94
Filed 10/22/94
No. 051-1994

JOB NO. 1234-692-OR
CONTRACT NO. 53-04M3-2-0042
SHEET 4 OF 8

REGISTERED
PROFESSIONAL
LAND SURVEYOR
Ronald E. Stoll 10/19/94
OREGON
JULY 15 1993
RONALD E. STOLL
2058

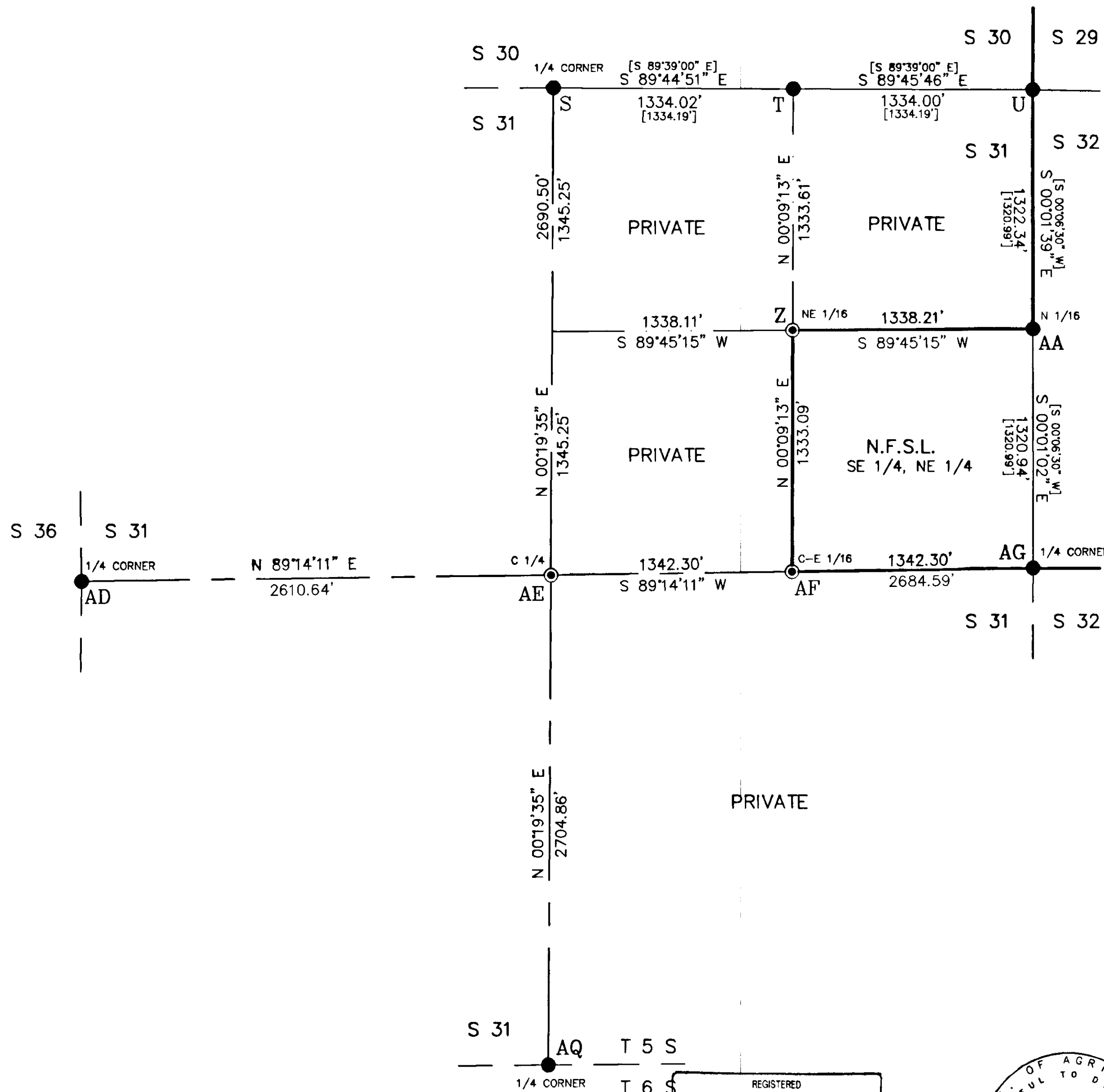
RONALD E. STOLL, R.L.S. 2058



TYPICAL FOREST SERVICE CAP
MARKED PER B-L-M MANUAL

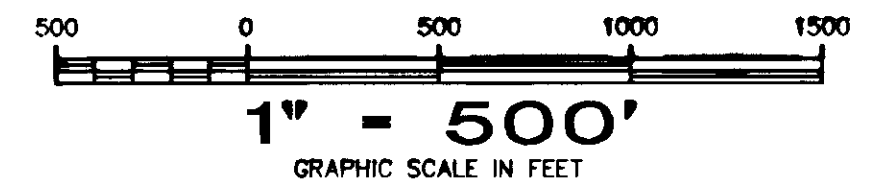
Survey Number 051-1994

FRAZIER CADASTRAL SURVEY WALLOWA-WHITMAN NATIONAL FOREST



LEGEND

- FOUND B-L-M BRASS CAPPED PIPE MONUMENT, 1991
- ⊙ SET A 3" DIAM. U.S.F.S. ALUMINUM CAPPED PIPE, 30" LONG, WITH MAGNET, MARKED PER B-L-M MANUAL, SEE TYPICAL CAP FOR STANDARD MARKINGS
- [] RECORD BEARING AND/OR DISTANCE, B-L-M, 1991
- N.F.S.L. = NATIONAL FOREST SYSTEMS LANDS BOUNDARY LINE POSTED TO STANDARD
- AE CORNER RECORD FORMS FILED WITH THE UNION COUNTY SURVEYOR



A PORTION OF

SECTION 31

T 5 S R 41 E W.M.

UNION COUNTY, OREGON

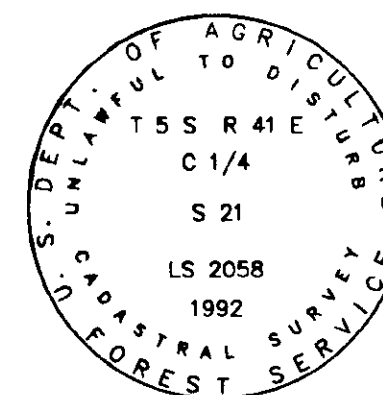
RECORD OF SURVEY

RES LAND SURVEYS, INC.

8335 N. PLACITA DADIVOSO
TUCSON, ARIZONA 85704

REGISTERED
PROFESSIONAL
LAND SURVEYOR
R. E. Stoll 10/94
OREGON
JULY 15 1983
RONALD E. STOLL
2058

RONALD E. STOLL, R.L.S. 2058



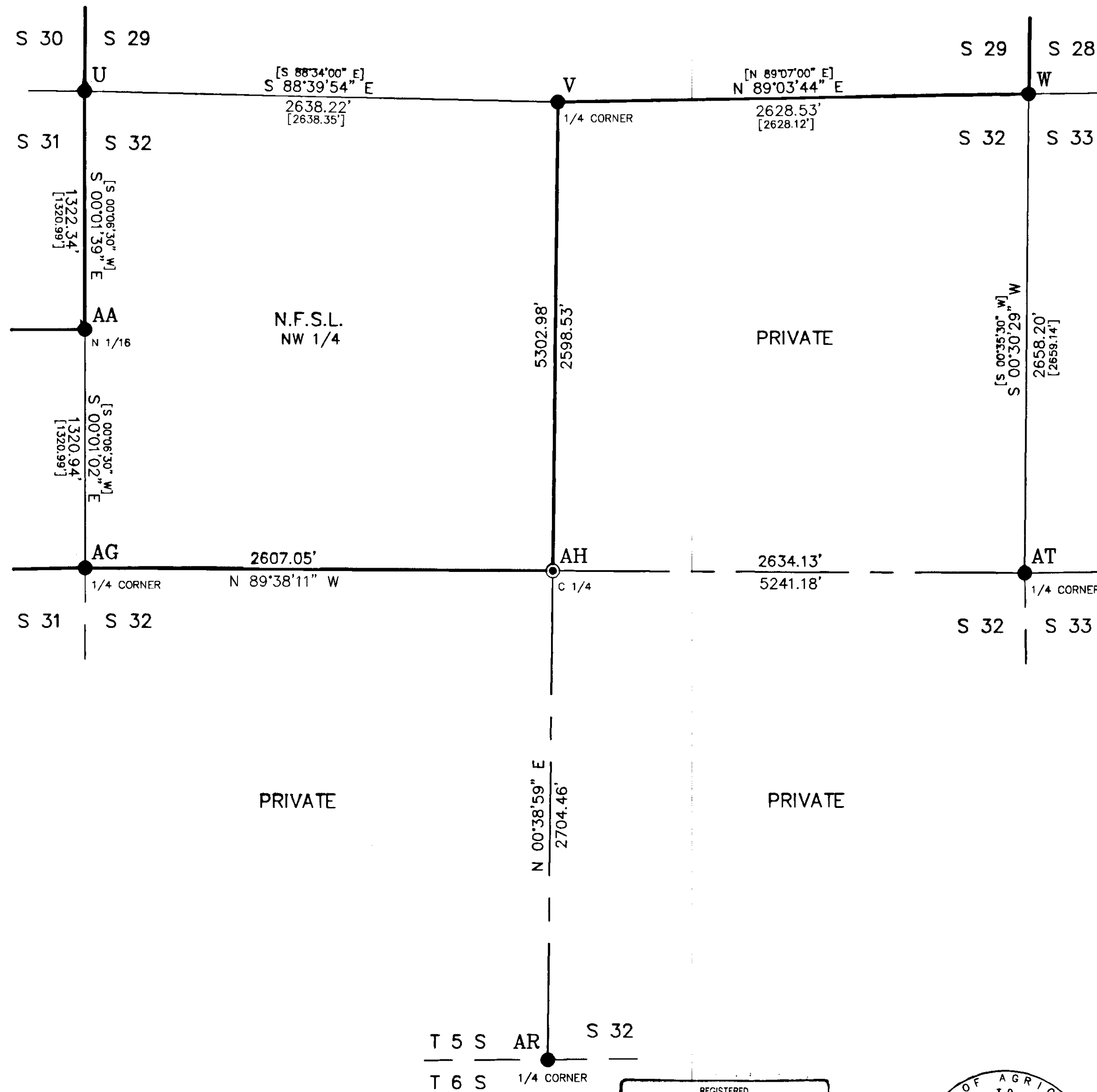
TYPICAL FOREST SERVICE CAP
MARKED PER B-L-M MANUAL

UNION COUNTY
SURVEYOR
Date Received 10/21/94
Date Filed 10/21/94
By Gregory T. Owen
File No 051-1994

JOB NO. 1234-692-OR
CONTRACT NO. 53-04M3-2-0042
SHEET 5 OF 8

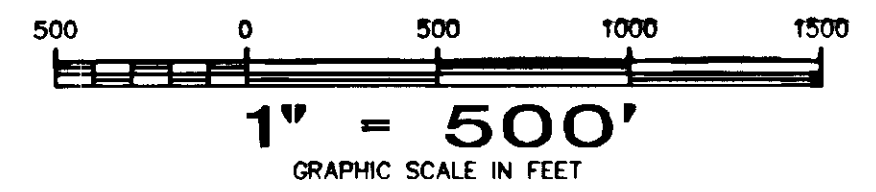
Survey Number 051-1994

FRAZIER CADASTRAL SURVEY WALLOWA-WHITMAN NATIONAL FOREST



LEGEND

- FOUND B-L-M BRASS CAPPED PIPE MONUMENT, 1991
- ⊙ SET A 3" DIAM. U.S.F.S. ALUMINUM CAPPED PIPE, 30" LONG, WITH MAGNET, MARKED PER B-L-M MANUAL, SEE TYPICAL CAP FOR STANDARD MARKINGS
- [] RECORD BEARING AND/OR DISTANCE, B-L-M, 1991
- N.F.S.L. = NATIONAL FOREST SYSTEMS LANDS BOUNDARY LINE POSTED TO STANDARD
- AH CORNER RECORD FORMS FILED WITH THE UNION COUNTY SURVEYOR



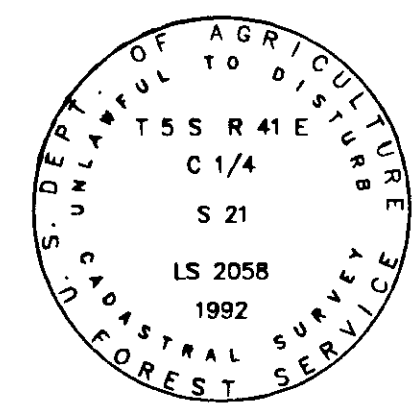
A PORTION OF
SECTION 32
T 5 S R 41 E W.M.
UNION COUNTY, OREGON

RECORD OF SURVEY
RES LAND SURVEYS, INC. 8335 N. PLACITA DADIVOSO
TUCSON, ARIZONA 85704

UNION COUNTY SURVEYOR
Date Received 10/21/94
Date Filed 10/22/94
By Bryan J. ...
File No 051-1994

JOB NO. 1234-692-OR
CONTRACT NO. 53-04M3-2-0042
SHEET 6 OF 8

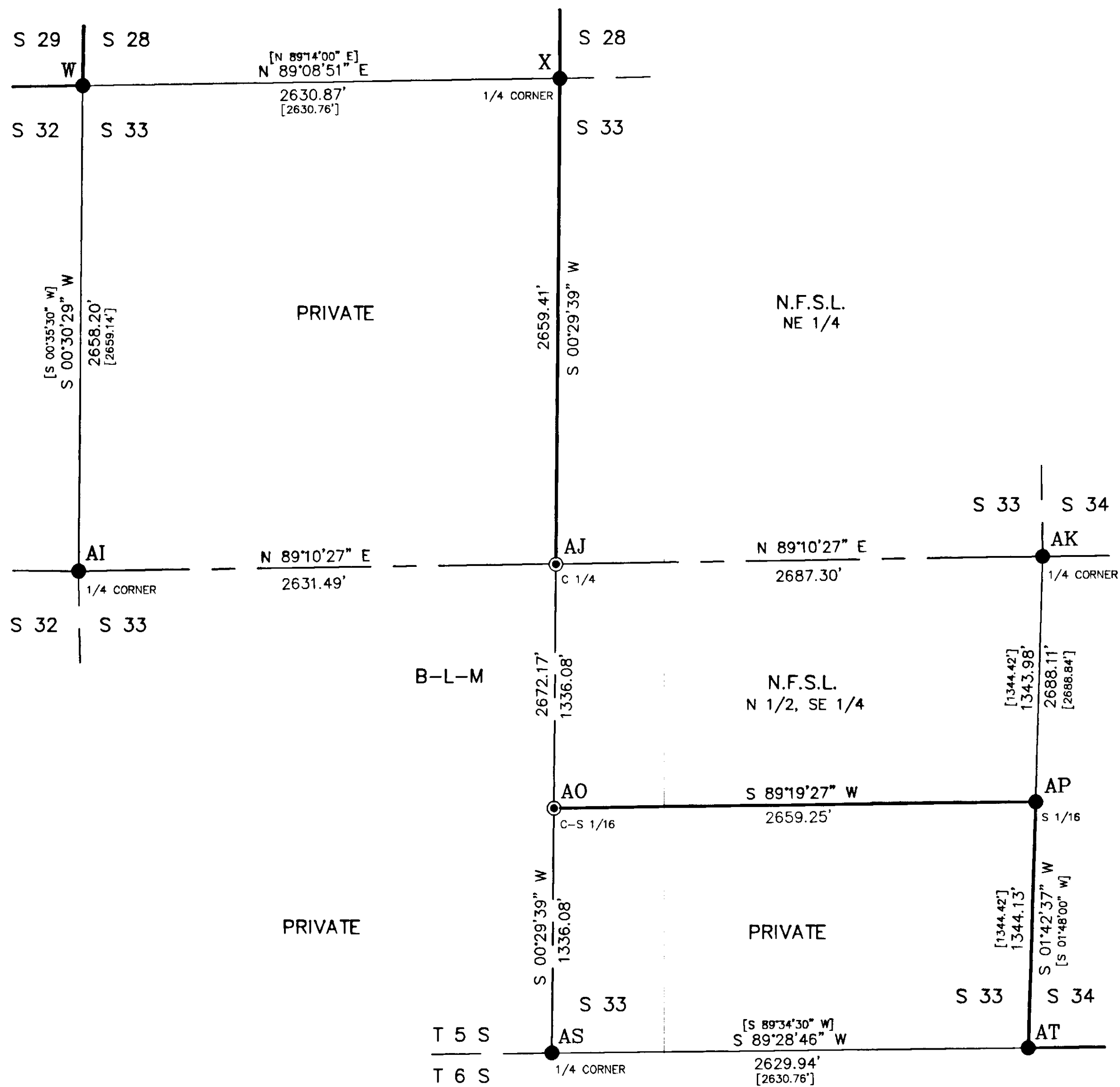
REGISTERED PROFESSIONAL LAND SURVEYOR
W & State 10/94
OREGON JULY 15 1993
RONALD E. STOLL
2058



RONALD E. STOLL, R.L.S. 2058

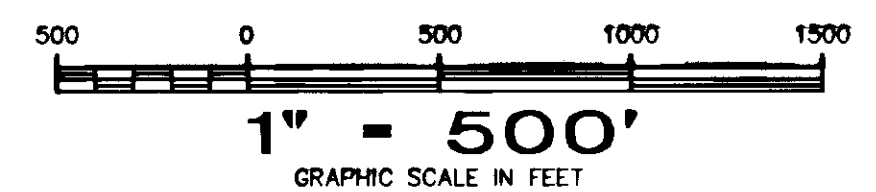
TYPICAL FOREST SERVICE CAP MARKED PER B-L-M MANUAL

FRAZIER CADASTRAL SURVEY WALLOWA-WHITMAN NATIONAL FOREST



LEGEND

- FOUND B-L-M BRASS CAPPED PIPE MONUMENT, 1991
- ⊙ SET A 3" DIAM. U.S.F.S. ALUMINUM CAPPED PIPE, 30" LONG, WITH MAGNET, MARKED PER B-L-M MANUAL, SEE TYPICAL CAP FOR STANDARD MARKINGS
- [] RECORD BEARING AND/OR DISTANCE, B-L-M, 1991
- N.F.S.L. = NATIONAL FOREST SYSTEMS LANDS BOUNDARY LINE POSTED TO STANDARD
- AJ CORNER RECORD FORMS FILED WITH THE UNION COUNTY SURVEYOR



A PORTION OF
SECTION 33
T 5 S R 41 E W.M.
UNION COUNTY, OREGON

RECORD OF SURVEY
RES LAND SURVEYS, INC. 8335 N. PLACITA DADIVOSO
TUCSON, ARIZONA 85704

UNION COUNTY
SURVEYOR

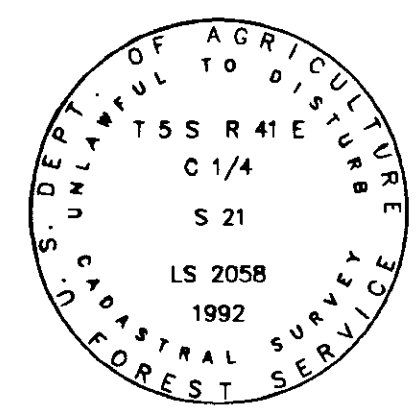
Date Received 10/21/94
Date Filed 10/22/94
By Gregory T. Dent
File No 051-1994

JOB NO. 1234-692-OR
CONTRACT NO. 53-04M3-2-0042
SHEET 7 OF 8

REGISTERED
PROFESSIONAL
LAND SURVEYOR

Ronald E. Stoll
10/19/94

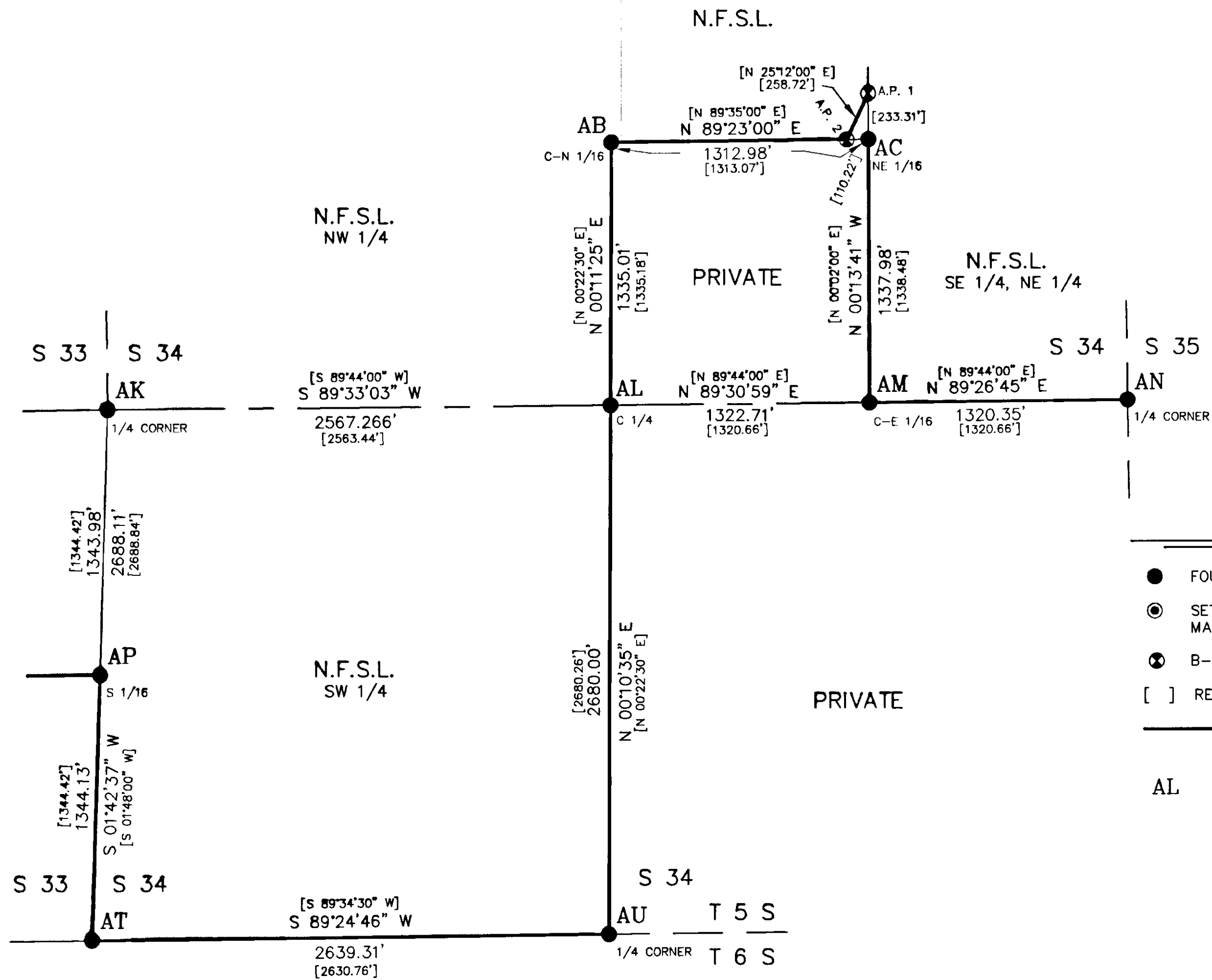
OREGON
JULY 15 1988
RONALD E. STOLL
2058



TYPICAL FOREST SERVICE CAP
MARKED PER B-L-M MANUAL

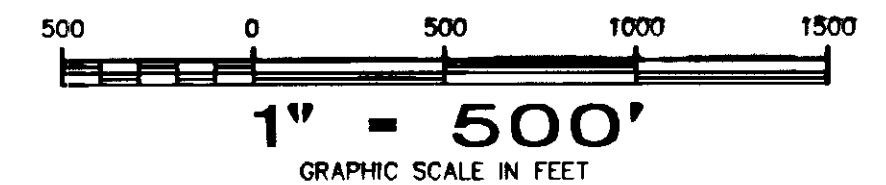
RONALD E. STOLL, R.L.S. 2058

FRAZIER CADASTRAL SURVEY WALLOWA-WHITMAN NATIONAL FOREST



LEGEND

- FOUND B-L-M BRASS CAPPED PIPE MONUMENT, 1991
- ⊙ SET A 3" DIAM. U.S.F.S. ALUMINUM CAPPED PIPE, 30" LONG, WITH MAGNET, MARKED PER B-L-M MANUAL, SEE TYPICAL CAP FOR STANDARD MARKINGS
- ⊗ B-L-M BRASS CAPPED PIPE MONUMENT, 1991, NOT LOCATED
- [] RECORD BEARING AND/OR DISTANCE, B-L-M, 1991
- N.F.S.L. = NATIONAL FOREST SYSTEMS LANDS BOUNDARY LINE POSTED TO STANDARD
- AL CORNER RECORD FORMS FILED WITH THE UNION COUNTY SURVEYOR



A PORTION OF
SECTION 34
T 5 S R 41 E W.M.
UNION COUNTY, OREGON

RECORD OF SURVEY

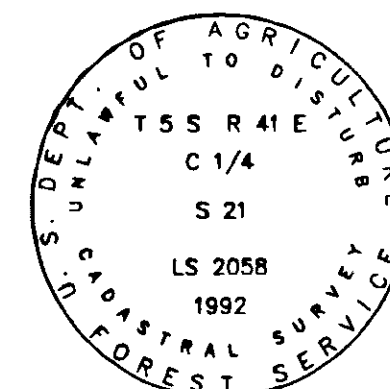
RES LAND SURVEYS, INC. 8335 N. PLACITA DADIVOSO
TUCSON, ARIZONA 85704

UNION COUNTY SURVEYOR
Date Received 10/22/94
Date Filed 10/22/94
By Gregory T. Clark
File No. 051-1994

JOB NO. 1234-692-OR
CONTRACT NO. 53-04M3-2-0042
SHEET 8 OF 8

REGISTERED
PROFESSIONAL
LAND SURVEYOR
Ronald E. Stoll 10/94
OREGON
JULY 15 1983
RONALD E. STOLL
2058

RONALD E. STOLL, R.L.S. 2058



TYPICAL FOREST SERVICE CAP
MARKED PER B-L-M MANUAL

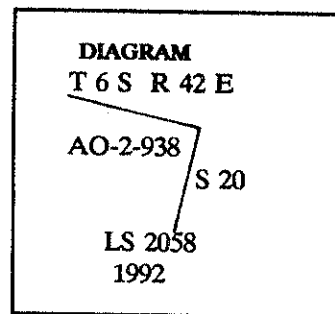
CERTIFIED RECORD OF LAND CORNER MONUMENTATION

History of original corner establishment:

At cor. no. 2, set a galvanized iron pipe, 1 in. diam., 36 ins. long, 24 ins. in the ground, mkd. AO-1-938; from which:

A tamarack, 6 ins. diam., bears S.85°E., 9.9ft. dist., mkd. AO-2-938 BT

A fir, 12 ins. diam., bears S.57°W., 11.3 ft. dist., mkd. AP-2-938 BT.



Description of corner evidence found:

Found 1 1/2" pipe and stone marked 2 AO 938 on West face.

A fir, 12" diam., bears S.53°49'W., 11.73', healed blaze.

A fir, 7" diam., bears S.89°02'E., 9.98', healed blaze.

Description of monument and accessories I established to perpetuate the original location of this corner:

Set a 3" diam. U.S.F.S aluminum capped pipe, 30" long, with magnet, 24" in ground and buried found pipe to West.

UNION COUNTY SURVEYOR	
Date Received	<u>8/18/94</u>
Date Filed	<u>10/23/94</u>
By	<u>[Signature]</u>
File No.	<u>051-1994C</u>

Narr. Drawer 1-21



Office of _____ County of _____
State of _____ I hereby certify that the within instrument was filed in this office
for record on the _____ day of _____, 19____
_____ by _____
(COUNTY OFFICIAL) (DEPUTY)