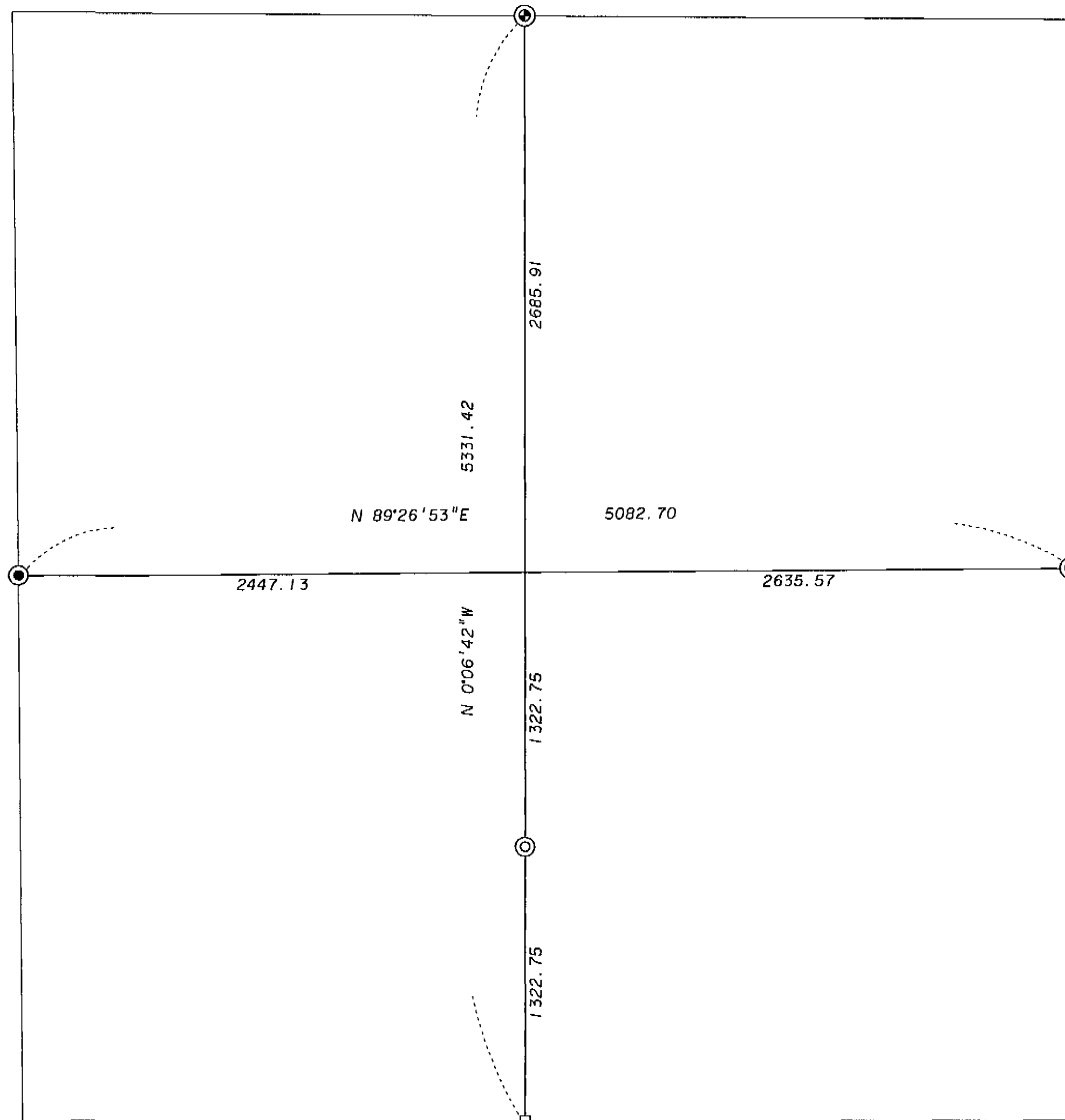


SECTION 31, T2S R38E



BASIS OF BEARING

Forward bearing as published by the U.S.C. and G.S. from  $\Delta$  COLLEGE to  $\Delta$  VALLEY Dated 1946.

LEGEND

- ⊙ Set 2 1/2" x 30" aluminum pipe with cap. See monumentation sheet filed separately.
- ⊕ Found 2" brass cap monument as per survey 6-78 and monumentation records.
- Found 2 1/2" aluminum pipe monument as per survey 6-78 and monumentation records.
- Position as shown on survey 6-78, no monument found or set.

NARRATIVE

This survey was ordered by the Union County Surveyor in order to place the Center South 1/16 corner of Section 31. This survey is based on the section break as shown on survey 6-78. The 1/16 corner set falls in the median of Interstate 84.

REGISTERED  
PROFESSIONAL  
LAND SURVEYOR

*Jeffery P. Petersen*  
OREGON  
JULY 20, 1993  
JEFFERY P. PETERSEN  
2625

Renewal Date: Dec. 31, 1996

REFERENCE MATERIAL

Union County Survey 6-78  
Union County Monumentation Records

UNION COUNTY  
SURVEYOR  
Date Received 3-28-96  
Date Filed 3-28-96  
By R. Robinson Deputy  
File No. 016-1996

**BAGETT, GRIFFITH & BLACKMAN**  
2006 Adams Avenue, LaGrande, Oregon  
Map of Survey  
The CS 1/16 corner of Section 31,  
Township 2 South, Range 38 East of  
the Willamette Meridian.  
UNION COUNTY, OREGON  
SURVEYED FOR Union County Surveyor  
SURVEYED BY JPP 3-96  
Scale: 1" = 500' Drawn by: JPP 3-96

016-1996