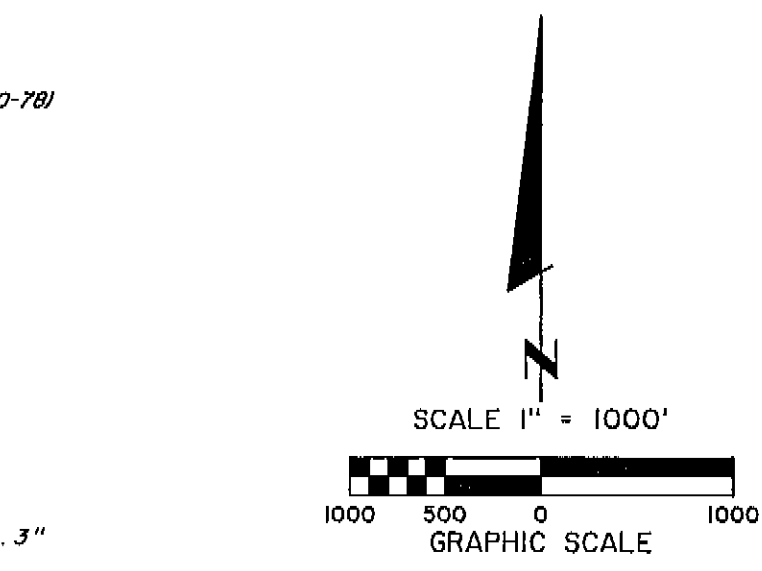
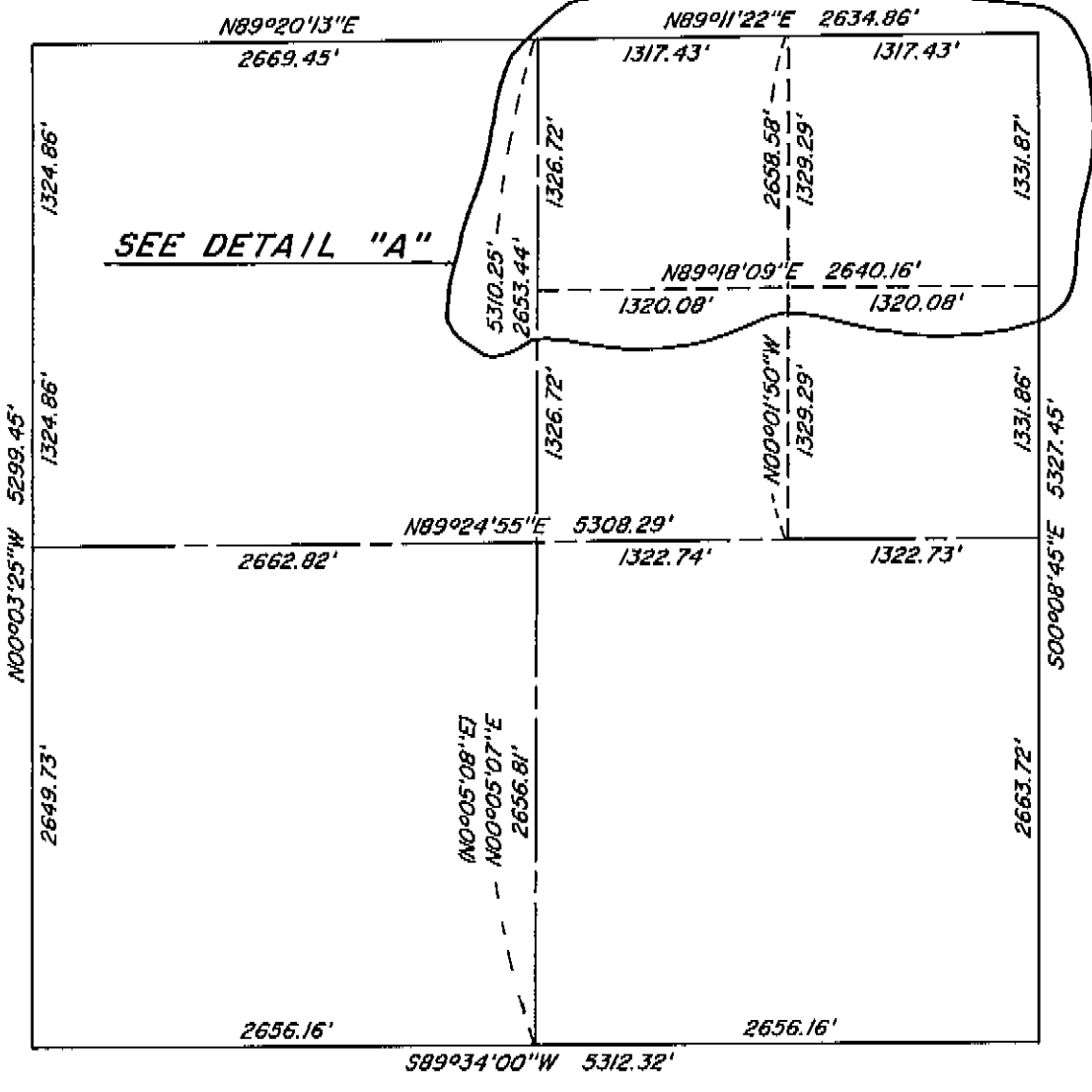


RECORD OF SURVEY IN THE NORTHEAST QUARTER OF SECTION 9,
TOWNSHIP 1 SOUTH, RANGE 38 EAST OF THE WILLAMETTE MERIDIAN, IN UNION COUNTY,
OREGON, FOR RIC GORDON ON AUGUST 13, 1996.

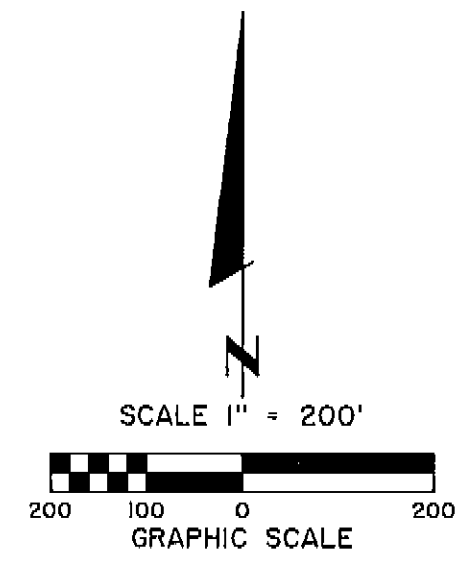
SECTION 9 AS SHOWN ON SURVEY NO. 70-78
DATA IN PARENTHESES COMPUTED FROM SURVEY NO.
70-78 BEARINGS AND DISTANCES.



BEARING BASE
(N89°11'22\"/>

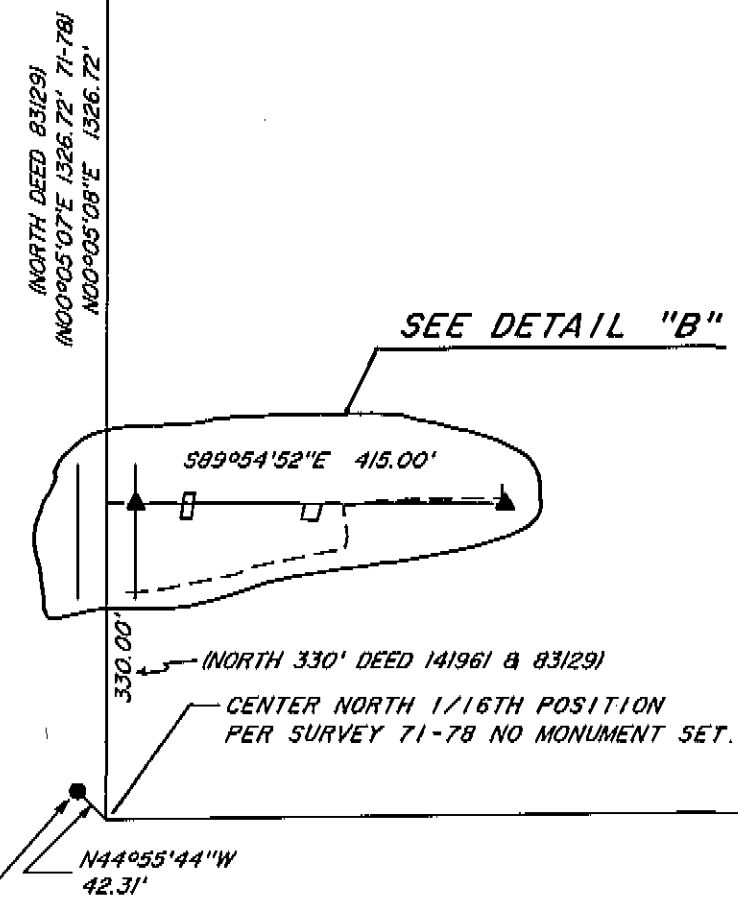
SECTION CORNER, FOUND CONCRETE MONUMENT, 7\"/>

DETAIL "A"



1/4 CORNER SECTION 8/9
1.25\"/>

SEE DETAIL "B"



FOUND 5/8\"/>

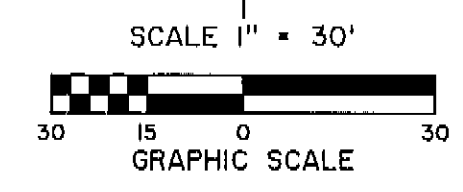
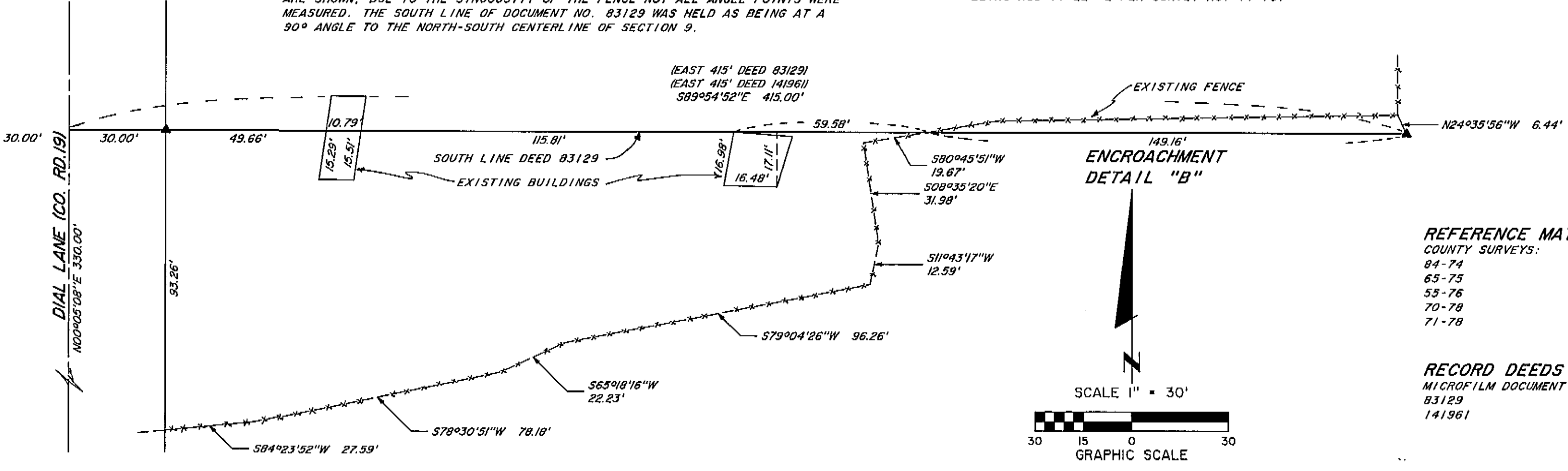
NARRATIVE:

THIS SURVEY WAS CONDUCTED FOR THE PURPOSE OF MARKING THE SOUTH LINE OF UNION COUNTY RECORDER'S DOCUMENT NO. 83129 FOR THE CLIENT. SURVEYS NO. 55-76, 70-78 & 71-78 WERE USED AS THE PRIMARY REFERENCE DATA FOR THIS SURVEY. THE NORTH 1/4 CORNER AND NORTHEAST SECTION CORNER OF SECTION 9 WERE TIED AS SHOWN ALONG WITH A MONUMENT SET FOR THE INTERSECTION OF THE WEST LINE OF COUNTY ROAD NO. 18 WITH THE SOUTH LINE OF THE NORTH 1/2 OF THE NORTHEAST QUARTER OF SAID SECTION 9 AND A MONUMENT SET FOR THE INTERSECTION OF THE WEST AND NORTH LINE OF COUNTY ROAD NO. 19 AS SHOWN. THE BEARING OF THE NORTH LINE OF SECTION 9 WAS HELD AS SHOWN ON SURVEY NO. 71-78 AND THE SECTION SUBDIVISION WAS COMPUTED AS SHOWN ON SURVEY NO. 71-78. THE CALCULATED BEARING FROM THE SOUTH QUARTER CORNER TO THE NORTH QUARTER CORNER COMPUTED TO BE ONE SECOND DIFFERENT THAN 71-78. THE SOUTH LINE OF DEED NO. 83129 WAS THEN COMPUTED AND THE LINE MONUMENTED AND STAKED WITH THE ENCROACHMENTS NOTED AS SHOWN ON THE ANNEXED MAP. THE MAJOR ANGLE POINTS IN THE EXISTING FENCE ARE SHOWN, DUE TO THE SINUOSITY OF THE FENCE NOT ALL ANGLE POINTS WERE MEASURED. THE SOUTH LINE OF DOCUMENT NO. 83129 WAS HELD AS BEING AT A 90° ANGLE TO THE NORTH-SOUTH CENTERLINE OF SECTION 9.

LEGEND:

- FOUND MONUMENT AS NOTED.
- CONCRETE MONUMENT FOUND AS NOTED.
- ▲ MONUMENT SET, A 5/8\"/>

() DATA OF RECORD AS NOTED.
BEARINGS BASED ON THE NORTH LINE OF SECTION 9 AS BEING N89°11'22\"/>



REFERENCE MATERIAL
COUNTY SURVEYS:
84-74
65-75
55-76
70-78
71-78

RECORD DEEDS
MICROFILM DOCUMENT NO.
83129
141961

REGISTERED PROFESSIONAL LAND SURVEYOR

Richard A. Shaver
OREGON
JULY 22, 1974
RICHARD A. SHAVER
1913

TIMBERLINE SURVEYS
P. O. BOX 61
WALLOWA, OREGON 97885
PHONE 541-886-2605
FAX 541-886-2605
REGISTRATION EXPIRES
6/30/98

UNION COUNTY SURVEYOR

Date Received 10/21/96
9/16/96

By Guy T. Shaver

File No. 042-1996

SURVEY NO. 042-1996