

BASIS OF BEARING

Solar observation taken at the Southwest corner of Section 15, Township 3 South, Range 40 East of the Willamette Meridian.

SCALE: 1"=500'

NARRATIVE

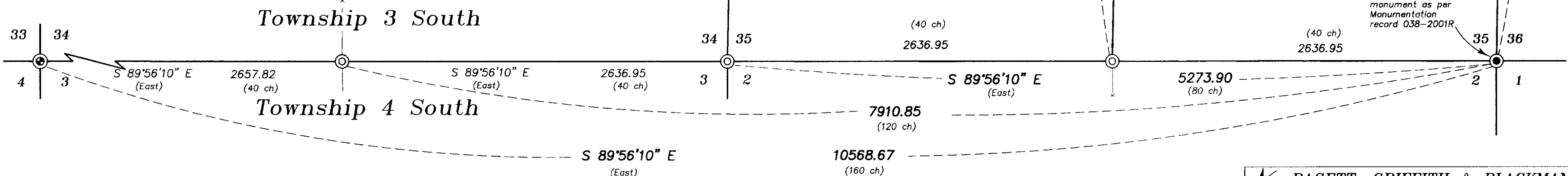
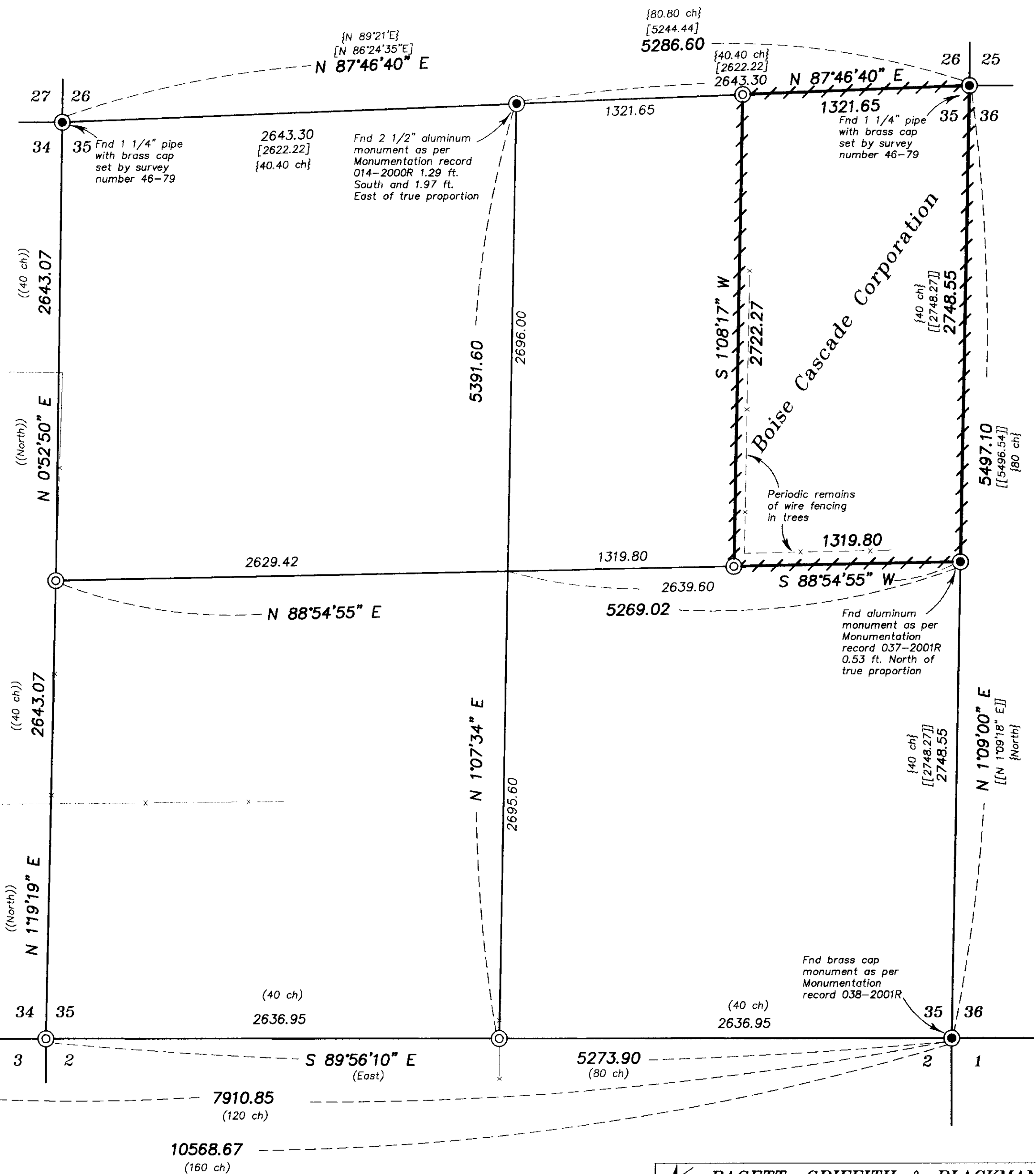
This survey was done at the request of Stan Wilde on behalf of Boise Cascade Corporation. The Boise Cascade ownership is an aliquot portion of Section 35. The North and East lines of the Section were previously surveyed and monumented. The West quarter corner of the section was not previously monumented, nor were any corners on the township line West of the Southeast corner of Section 35. I retraced the township line to the West until a corner was found at the Southwest corner of Section 34. I establish the Township line from this corner to the Southeast corner of Section 35. I place the South quarter corner of Section 34 at the intersection of this line and the remains of an ancient North-South fence line. The wire from this fence has been removed, but rock jacks and remnants of wire and rotted posts remain intermittently along this line. I then place the Southwest corner and the South quarter corner of Section 35 at proportionate distance from the South quarter corner of Section 34 to the Southeast corner of Section 35. This method places the South quarter corner 1.5 ft. West of an existing North-South fence line. I place the West quarter corner of Section 35 at proportionate distance from the Northwest and Southwest corners of Section 35, but accept the Easting of an existing ancient fence line for the quarter corner position, creating an angle point at the quarter corner position. I find the North and East quarter corner monuments away from the true proportionate positions as shown. I then establish the interior corners of the section according to the 1973 BLM Manual of Survey Instructions. I find the remains of a fence line sporadically along the Westerly portion of the South line of the Boise Cascade ownership. These remains are approximately 75 feet North of the true line. There are also some remains of a fence along the Westerly portion of the Boise Cascade ownership. These remains vary from 20-60 feet East of the true property line. The true posted lines are reasonably harmonious with the existing blaze lines around this tract. I found no other unusual conditions on this survey.

- ### LEGEND
- Found monument as described as per Union County Monumentation records
 - ⊙ Found original GLO Evidence and set 2 1/2" x 30" aluminum monument
 - ⊙ Set 2 1/2" x 30" aluminum monument at position determined by survey
 - Existing fence line
 - Set steel fence posts along this line
 - () Record information of GLO Contract Number 102
 - (()) Record information of GLO Contract Number 103
 - { } Record information of GLO Contract Number 335
 - [] Record information of Survey Number 46-79
 - [[]] Record information of Survey Number 29-85

Note:
For monumentation information, see monumentation record filed separately

REFERENCE MATERIAL

- GLO Contract Number 102 by Timothy W. Davenport dated July 20, 1863
- GLO Contract Number 103 by David P. Thompson dated September 3, 1863
- GLO Contract Number 335 by W.B. Barr dated June 14, 1880
- Union County monumentation records Survey Number 46-79
- Survey Number 26-85
- Survey Number 29-85



REGISTERED
PROFESSIONAL
LAND SURVEYOR
Rick G. Robinson
OREGON
JULY 17, 1986
RICK G. ROBINSON
2219
Renewal Date: Dec. 31, 2002

UNION COUNTY
SURVEYOR
Date Received 10-23-01
Date Filed 10/23/01
By *Gregory T. Olson*
File No. 034-2001

BAGETT, GRIFFITH & BLACKMAN
2006 Adams Avenue, LaGrande, Oregon
Map of Survey
Monumentation of the East half of the Northeast quarter of Section 35, Township 3 South, Range 40 East of the Willamette Meridian
UNION COUNTY, OREGON

SURVEYED FOR	Boise Cascade Corporation	
SURVEYED BY	R.G.R.	9 & 10/2001
Scale: 1" = 500'	Drawn by: R.G.R.	10/2001

SURVEY NUMBER 034-2001