

# CURVE ALIGNMENT FOR EAST "Q" AND 27TH STREET

## BASIS OF BEARING

Forward bearing as published by the U.S.C.  
and G.S. from  $\Delta$  COLLEGE to  $\Delta$  VALLEY  
Dated 1946.

## REFERENCE MATERIAL

SURVEYS  
Old Book Page 364 Survey No. 25-84  
Survey No. 26-88 Survey No. 91-71  
Ore. State Highway Strip Map No. 8B-36-3  
Minor Partition No. 1995-001  
Minor Partition No. 1997-014  
Plat of Eastgate Addition  
Plat of Sunset Meadows Subdivision  
Replat of Sunset Meadows Subdivision  
Union County Monumentation Records

DEEDS  
Microfilm No. 150152 Microfilm No. 981427  
Microfilm Nos. 20003618 through 20003620  
Microfilm Nos. 20021627 through 20021629  
Microfilm Nos. 20021634 through 20021641  
Microfilm No. 20021649 Microfilm No. 20021651  
Microfilm No. 20001665

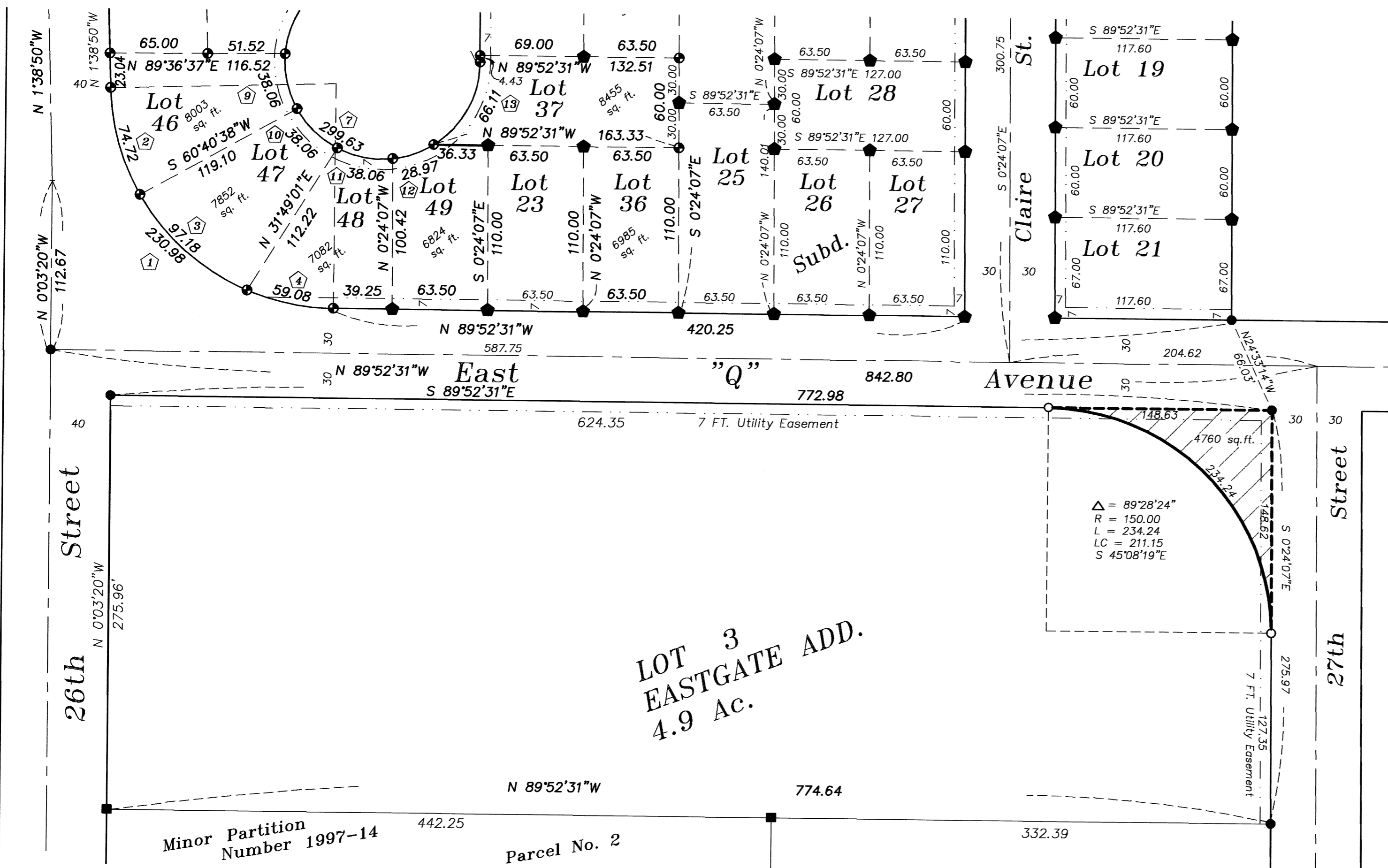
## LEGEND

- Found 5/8" iron pin with plastic cap marked "BGB SURVEY MARKER" set by Minor Partition Number 1997-014
- Found 5/8" iron pin with plastic cap marked "BGB SURVEY MARKER" set by the plat of Eastgate Subdivision
- ◆ Found 5/8" iron pin with plastic cap marked "BGB SURVEY MARKER" set by the plat of Sunset Meadows Subdivision
- ⊕ Found 5/8" x 30" iron pin with plastic cap marked "BGB SURVEY MARKER" set by SUNSET MEADOWS II SUBDIVISION
- Set 5/8" x 30" iron pin with plastic cap marked "BGB SURVEY MARKER"

- Centerline of road
- - - 7 foot Utility Easement
- Ⓢ Curve data, Curve number

## NARRATIVE

This survey was done at the request of Norm Paullus, representing the City of La Grande. The purpose of this survey is to define an area that would be taken by purchase of new right of way for the purpose of creating a new curve to re-align the street at East "Q" Avenue and 27th street. The curve was to have the same radius at the new curve at 26th and East "Q" with no taking on the East Side of 27th Street. I find the monuments as shown and find no unusual conditions with this survey.



### CURVE DATA

<p>① Total (South) Lots 46-48  <math>\Delta = 88^{\circ}13'43''</math>  <math>R = 150.00'</math>  <math>L = 230.98'</math>  <math>T = 145.43'</math>  <math>L.C. = 208.83'</math>  <math>N 45^{\circ}45'39''W</math></p>	<p>② R/W Curve SW Lot 46  <math>\Delta = 28^{\circ}32'28''</math>  <math>R = 150.00'</math>  <math>L = 74.72'</math>  <math>T = 38.15'</math>  <math>L.C. = 73.95'</math>  <math>S 15^{\circ}55'02''E</math></p>	<p>③ R/W Curve SW Lot 47  <math>\Delta = 37^{\circ}07'11''</math>  <math>R = 150.00'</math>  <math>L = 97.18'</math>  <math>T = 50.36'</math>  <math>L.C. = 95.49'</math>  <math>S 48^{\circ}44'51''E</math></p>	<p>④ R/W Curve SW Lot 48  <math>\Delta = 22^{\circ}34'04''</math>  <math>R = 150.00'</math>  <math>L = 59.08'</math>  <math>T = 29.93'</math>  <math>L.C. = 58.70'</math>  <math>S 78^{\circ}35'29''E</math></p>
<p>⑤ R/W Curve NE Lot 46  <math>\Delta = 33^{\circ}32'52''</math>  <math>R = 65.00'</math>  <math>L = 38.06'</math>  <math>T = 19.59'</math>  <math>L.C. = 37.52'</math>  <math>S 12^{\circ}43'17''E</math></p>	<p>⑥ R/W Curve NE Lot 47  <math>\Delta = 33^{\circ}32'52''</math>  <math>R = 65.00'</math>  <math>L = 38.06'</math>  <math>T = 19.59'</math>  <math>L.C. = 37.52'</math>  <math>S 46^{\circ}16'09''E</math></p>	<p>⑩ R/W Curve NW Lot 49  <math>\Delta = 25^{\circ}32'08''</math>  <math>R = 65.00'</math>  <math>L = 28.97'</math>  <math>T = 14.73'</math>  <math>L.C. = 28.73'</math>  <math>N 70^{\circ}38'29''E</math></p>	<p>⑬ R/W Curve West Lot 37  <math>\Delta = 58^{\circ}16'31''</math>  <math>R = 65.00'</math>  <math>L = 66.11'</math>  <math>T = 36.23'</math>  <math>L.C. = 63.30'</math>  <math>N 28^{\circ}44'09''E</math></p>

REGISTERED  
PROFESSIONAL  
LAND SURVEYOR  
  
  
 OREGON  
 JULY 13, 1973  
**GREGORY T. BLACKMAN**  
 991  
 Renewal Date: Dec. 31, 2003

UNION COUNTY  
SURVEYOR  
  
 Date Received 10/31/03  
 Date Filed 11/13/03  
 By R. ROBINSON, DEPUTY  
 File No. 037-2003

**BAGETT, GRIFFITH & BLACKMAN**  
 2006 Adams Avenue, LaGrande, Oregon  
 Map of Survey  
 Situate in the Southwest Quarter of the Southeast Quarter of Section 4 Township 3 South, Range 38 East and being a portion of Lot 3 of Eastgate Addition to La Grande  
 UNION COUNTY, OREGON  
 SURVEYED FOR The City of La Grande  
 SURVEYED BY GTB 10/28/03  
 Scale: 1"=60 ft. Drawn by: GTB 10/31/03