

# RECORD OF SURVEY

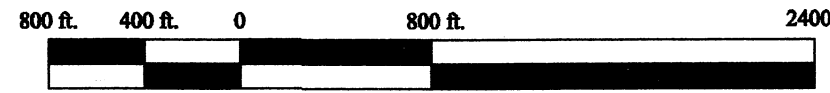
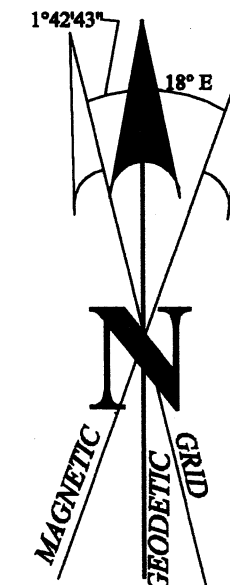
## MT. EMILY CADASTRAL SURVEY

CONTRACT NO. 53-04R3-9-40C, TASK ORDER UMA-12

UMATILLA NATIONAL FOREST

July - September 2003

SECTIONS 29, 30, 31, 32, 33, 34, 35,  
T. 1 N., R. 38 E., W.M.  
SECTIONS 2, 3, 4, 5, 6, 8,  
T. 1 S., R. 38 E., W.M.  
UNION COUNTY, OREGON



1 Foot = 0.3048 Meters

**BASIS OF BEARINGS:** Bearings are the Mean Geodetic Bearings obtained by inverting between the geodetic coordinates. (This results in a 1.33 ft. misclosure when using the geodetic rather than the grid bearings when computing a closure around Section 5.) The state plane grid angle is 1°42'43" at the S 1/4 between Sections 5 & 8. Distances are ground distances obtained using the combination grid factor of 0.999723, which is based on the average project elevation of 1197 meters and the scale factor at the S 1/4 between Sections 5 & 8. Ellipsoid Heights are based on the GRS80 ellipsoid (NAD83 datum).

### LEGEND

- ◆ Found monument
- Found monument and maintained corner
- Upgraded existing monument and maintained corner
- Set monument
- No monument set
- (Italics) Record Data
- R1 Davenport, 1863, Contract No. 102
- R2 Thompson, 1863, Contract No. 103
- R3 Campbell, 1883, Contract No. 468
- R4 Kimbrell, 1891, Contract 579
- R5 Perry, 1980, C.S. 38-80
- R6 Griffith, 1980, C.S. 73-80
- R7 Stoll, 1995, C.S. 50-1994
- R8 Langlitz, 1995, C.S. 35-1995
- R9 Griffith, 1997, C.S. 022-1997
- //// Property Line posted (+/- 1 ft.) with 6 ft. galvanized post or 6 ft. fiberglass posts and property boundary sign.
- N.F.S.L. National Forest System Lands
- B.L.M. Land administer by the Bureau of Land Management
- No. Deed Record Number
- CH Chains, 1 chain = 66 feet

### METHOD OF SURVEY & STANDARDS

The survey control was conducted using Trimble 4800s and Ashtech Z12s dual frequency GPS receivers with CORS stations SPN1, COBS & IDTD being used as control. Some of the corners were occupied directly using the GPS units. Corners that could not be occupied directly or were set at calculated positions were tied from nearby GPS control points using a Nikon Total Station. The posting lines were then surveyed using the Nikon Total Station.

All measurements meet state and U.S.D.A. Forest Service Contract requirements. All GPS measurements were made in accordance with "Standard and Guidelines for Cadastral Surveys Using Global Positioning Methods" dated May 9, 2001, version 1.0 by U.S. Department of Agriculture, Forest Service and U.S. Department of Interior, Bureau of Land Management.

See also the History on page 2 and the Narrative on page 3 of this Record of Survey.

### PURPOSE OF SURVEY

The intent of this survey is to define, mark and post the common boundary between National Forest Land and private lands for administrative purposes.

Examined and accepted for the USDA Forest Service this 26<sup>th</sup> day of January, 2004.

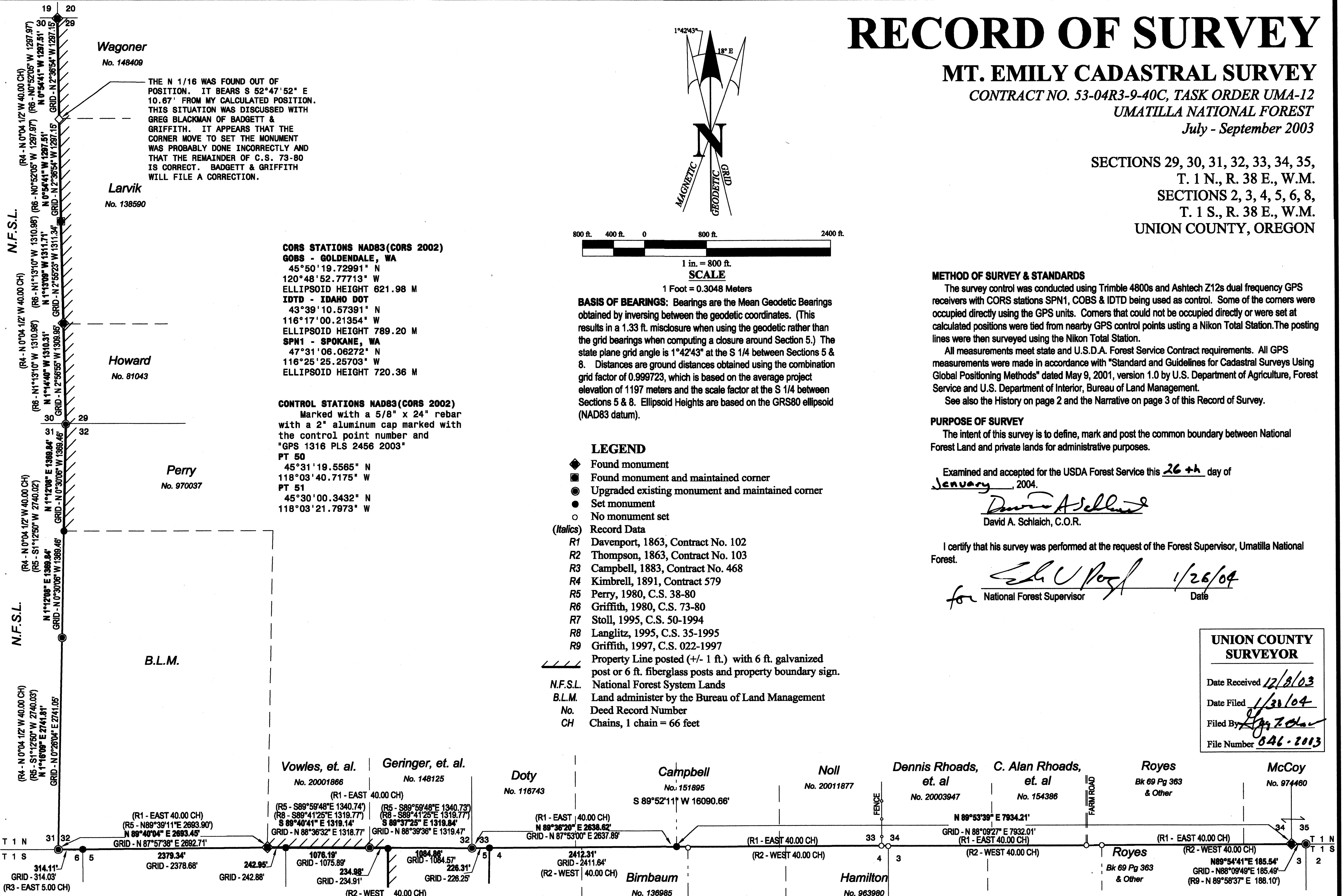
*David A. Schlaich*  
David A. Schlaich, C.O.R.

I certify that his survey was performed at the request of the Forest Supervisor, Umatilla National Forest.

*John U. Poyl* 1/26/04  
for National Forest Supervisor Date

### UNION COUNTY SURVEYOR

Date Received 12/8/03  
Date Filed 1/30/04  
Filed By [Signature]  
File Number 046-2003



**SURVEYOR'S NOTES:**  
1. See Corner Recordations forms filed concurrently with this Record of Survey.

N.F.S.L.  
SEE PAGE 2 FOR SECTION 5

REGISTERED PROFESSIONAL LAND SURVEYOR  
*Evelyn R. Kalb* 1/21/04  
OREGON  
July 25, 1990  
Evelyn R. Kalb  
2456  
EXPIRES: 06/30/2005

**CHESEBRO & KALB**  
Land Surveying & Boundary Consulting  
P.O. Box 19  
Mill City, OR 97360

CREW: WALTER, CORDOZA, EDWARDS-HILL, CHESEBRO  
DRAWN BY: KALB  
CHECKED BY: CHESEBRO  
SHEET: 1 OF 9  
JOB NO. 03-02

# RECORD OF SURVEY

## MT. EMILY CADASTRAL SURVEY

CONTRACT NO. 53-04R3-9-40C, TASK ORDER UMA-12

UMATILLA NATIONAL FOREST

July - September 2003

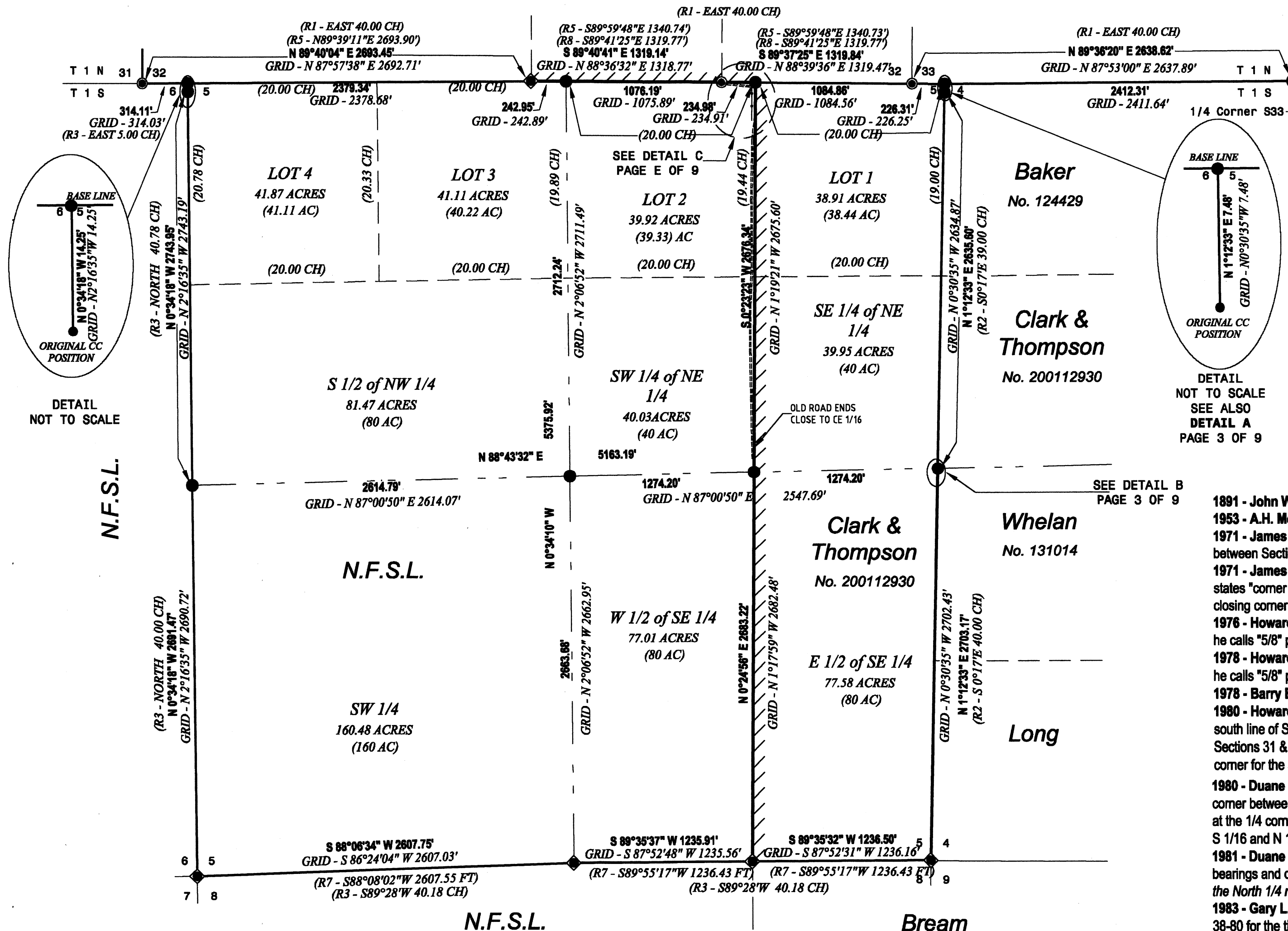
SECTIONS 29, 30, 31, 32, 33, 34, 35,

T. 1 N., R. 38 E., W.M.

SECTIONS 2, 3, 4, 5, 6, 8,

T. 1 S., R. 38 E., W.M.

UNION COUNTY, OREGON



### HISTORY OF SURVEYS

1863 - Timothy W. Davenport, Contract No. 102, surveyed the Baseline between Townships 1 North and 1 South, and the exterior of T. 1 S., R. 38 E.

1863 - David P. Thompson, Contract No. 103, surveyed West on the North boundary of T. 1 S., R. 38 E. setting closing and 1/4 corners. He terminates the line at the North 1/4 corner of Section 5. He does not note any ties to Davenport's corners that were set approximately one month earlier, except at the closing corner between Sections 2 and 3. He also subdivided the eastern portion of T. 1 S., R. 38 E. surveying just the eastern four tiers of sections.

1867 - Joseph G. Gray under joint contract with William H. Odell, Contract No. 120, subdivides a portion of T. 1 N., R. 38 E. using the Davenport's corners on the Base Line. He makes no mention of Thompson's corners.

1883 - Frank W. Campbell, Contract No. 468, completes the subdivision of T. 1 S., R. 38 E. He surveyed the South and West boundaries of Section 5 and establishes the closing corner between Section 5 and 6. The plat of this survey does not use Thompson's North quarter corner for Section 5, but does use Thompson's corners on the East line of Section 5.

1891 - John W. Kimbrell, Contract 579, completes the subdivision of T. 1 N., R. 38 E.

1953 - A.H. McLain, RPE 1360, C.S. No. 4, calls a stone at the closing corner between Sections 2 and 3.

1971 - James G. Voelz, PLS 381, C.S. No 4-71, surveys in Section 8 and finds original evidence at the section corner between Sections 4, 5, 8 & 9.

1971 - James G. Voelz, PLS 381, C.S. 25-71, surveys in Section 3. At the "correction" corner between Sections 2 & 3 he states "corner stone found". He notes a found 1 1/2" pipe on the baseline, but gives no dimensions. He did not find the closing corner between Section 3 & 4.

1976 - Howard L. Perry, RPE 8348, C.S. 55-76, surveys in Section 9. At the section corner between Sections 4, 5, 8 & 9 he calls "5/8" pin & bearing tree".

1978 - Howard L. Perry, PLS 1294, C.S. 70-78, surveys in Section 9. At the section corner between Sections 4, 5, 8 & 9 he calls "5/8" pin & bearing tree".

1978 - Barry B. Barbour, PLS 1051, Union Co. 72-84R, remonuments the corner between Sections 19, 20, 29 & 30.

1980 - Howard L. Perry, PLS 1294, C.S. 38-80, surveys in Section 32 and gives distances to fence corners along the south line of Section 33. He found original evidence at the section corners between Sections 29, 30, 31, & 32, and Sections 31 & 32. He also found original evidence at the South 1/4 corner for Section 32. He used an existing fence corner for the section corner between Sections 32 & 33, and proportioned the West 1/4 corner for Section 32.

1980 - Duane I. Griffith, PLS 644, C.S. 73-80, surveys in Section 29. He finds the remonumented GLO corners at the corner between Sections 19, 20, 29 & 30; and the corner between Sections 29, 30, 31 & 32. He also found a GLO corner at the 1/4 corner between Sections 29 & 30, and remonumented the corner with a brass cap. He also set brass caps at the S 1/16 and N 1/16 between Sections 29 & 30.

1981 - Duane I. Griffith, PLS 644, C.S. 28-81, does additional survey work in the North 1/4 of Section 29 and uses his bearings and distances from C.S. 73-80. Note: There is a scrivener's error of 2595.94' instead of 1297.97' on the plat for the North 1/4 mile on the West line of the section.

1983 - Gary L. Langlitz, PLS 1099, C.S. 43-83, surveyed inside of Section 32; and used record information from C.S. 38-80 for the ties to the standard corner between Sections 32 & 33, and the corner between Sections 29, 30, 31, & 32.

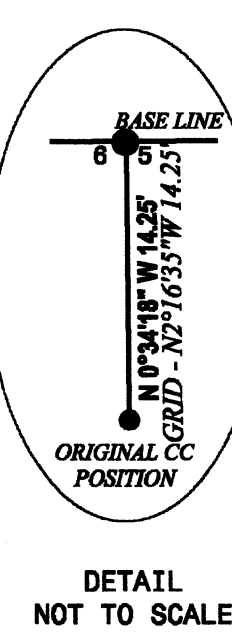
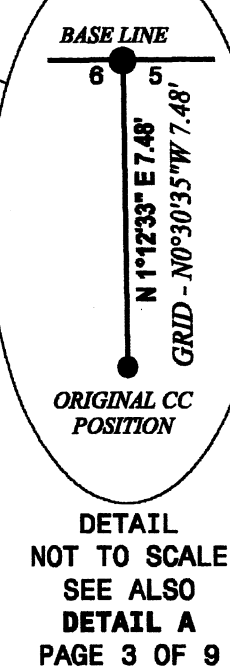
1987 - Gary L. Langlitz, PLS 1099, C.S. 35-87, tied the stone which had previously been accepted as the closing corner between Sections 2 & 3 and remonumented it as the closing corner.

1995 - Ronald E. Stoll, PLS 2058, C.S. 50-1994, surveys the south line of Section 5 remonumenting the original corner between Sections 5, 6, 7 & 8; and the quarter corner between Sections 5 & 8. He also established the East sixteenth corner between Sections 5 & 8.

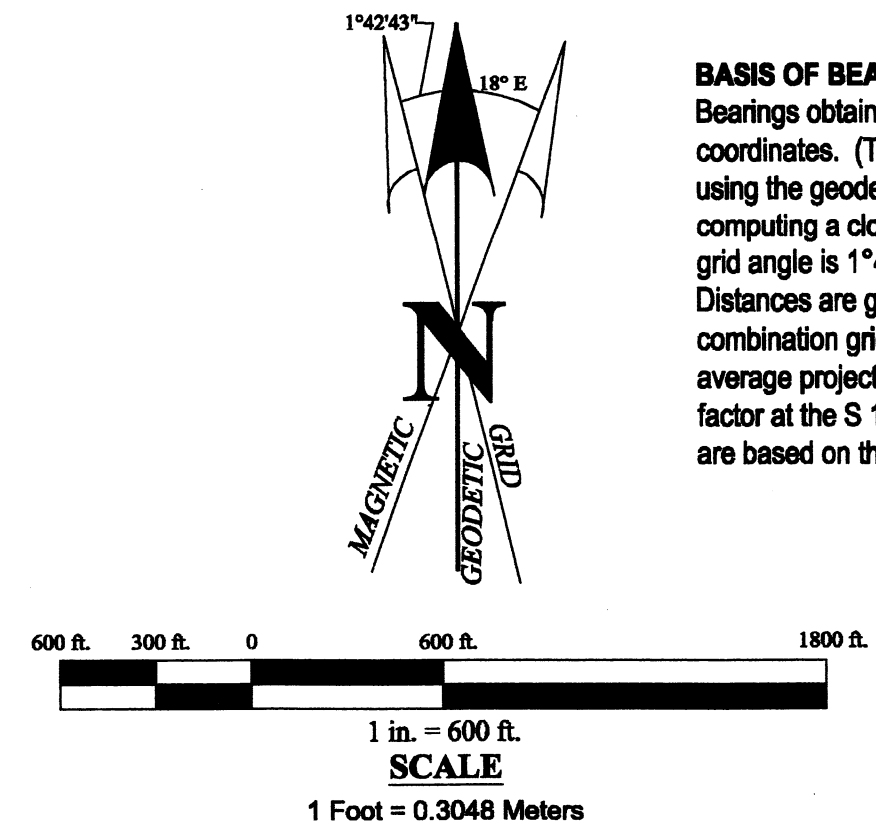
1995 - Gary L. Langlitz, PLS 1099, C.S. 35-1995, files a correction survey for work in Section 32. He uses the record positions shown on previous survey C.S. 38-80, and does not visit the corners on the West line of Section 32. He does not find the E 1/16 on the south line of Section 32 that was set earlier and therefore he sets a new monument for the E 1/16.

1996 - Gary L. Langlitz, PLS 1099, C.S. 002-1996, files a correction survey for work in Section 32. He uses the record positions shown on previous survey C.S. 38-80, and does not visit the northwest and southeast section corners.

1997 - Duane I. Griffith, PLS 644, C.S. 022-1997, surveys along the baseline from the standard corner between Sections 34 & 35 and the standard corner between sections 33 & 34 in R 39 E. He monuments the standard corner between Sections 34 & 35 at record bearing and distance from the closing corner between Sections 2 & 3. However, there is no bearing and distance in the record tying these two corners together. See Narrative.



- LEGEND**
- ◆ Found monument
  - Found monument and maintained corner
  - Upgraded existing monument and maintained corner
  - Set monument
  - No monument set
- (Italics)* Record Data
- R1 Davenport, 1863, Contract No. 102
  - R2 Thompson, 1863, Contract No. 103
  - R3 Campbell, 1883, Contract No. 468
  - R4 Kimbrell, 1891, Contract 579
  - R5 Perry, 1980, C.S. 38-80
  - R6 Griffith, 1980, C.S. 73-80
  - R7 Stoll, 1995, C.S. 50-1994
  - R8 Langlitz, 1995, C.S. 35-1995
  - R9 Griffith, 1997, C.S. 022-1997
- Property Line posted (+/- 1 ft.) with 6 ft. galvanized post or 6 ft. fiberglass posts and property boundary sign.
- N.F.S.L. National Forest System Lands  
 B.L.M. Land administrator by the Bureau of Land Management  
 No. Deed Record Number  
 CH Chains, 1 chain = 66 feet



**BASIS OF BEARINGS:** Bearings are the Mean Geodetic Bearings obtained by inverting between the geodetic coordinates. (This results in a 1.33 ft. misclosure when using the geodetic rather than the grid bearings when computing a closure around Section 5.) The state plane grid angle is 1°42'43" at the S 1/4 between Sections 5 & 8. Distances are ground distances obtained using the combination grid factor of 0.999723, which is based on the average project elevation of 1197 meters and the scale factor at the S 1/4 between Sections 5 & 8. Ellipsoid Heights are based on the GRS80 ellipsoid (NAD83 datum).

**UNION COUNTY SURVEYOR**

Date Received 12/8/03  
 Date Filed 1/30/04  
 Filed By Evelyn R. Kalb  
 File Number 046-2013

REGISTERED PROFESSIONAL LAND SURVEYOR

Evelyn R. Kalb 12/1/04

OREGON  
 July 25, 1990  
 Evelyn R. Kalb  
 2456

EXPIRES: 06/30/2005

**CHESEBRO & KALB**

Land Surveying & Boundary Consulting

P.O. Box 19  
 Mill City, OR 97360

CREW: WALTER, CORDOZA, EDWARDS-HILL, CHESEBRO

DRAWN BY: KALB  
 CHECKED BY: CHESEBRO

SHEET: 2 OF 9  
 JOB NO. 03-02



# RECORD OF SURVEY

## MT. EMILY CADASTRAL SURVEY

CONTRACT NO. 53-04R3-9-40C, TASK ORDER UMA-12  
UMATILLA NATIONAL FOREST

July - September 2003

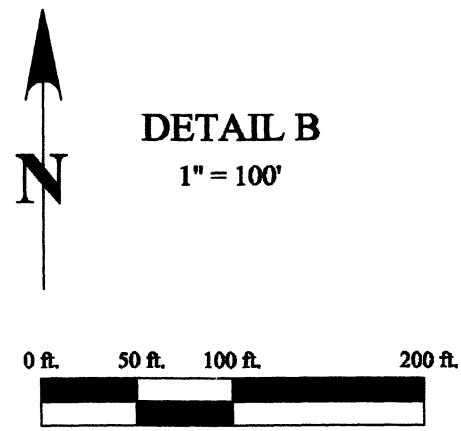
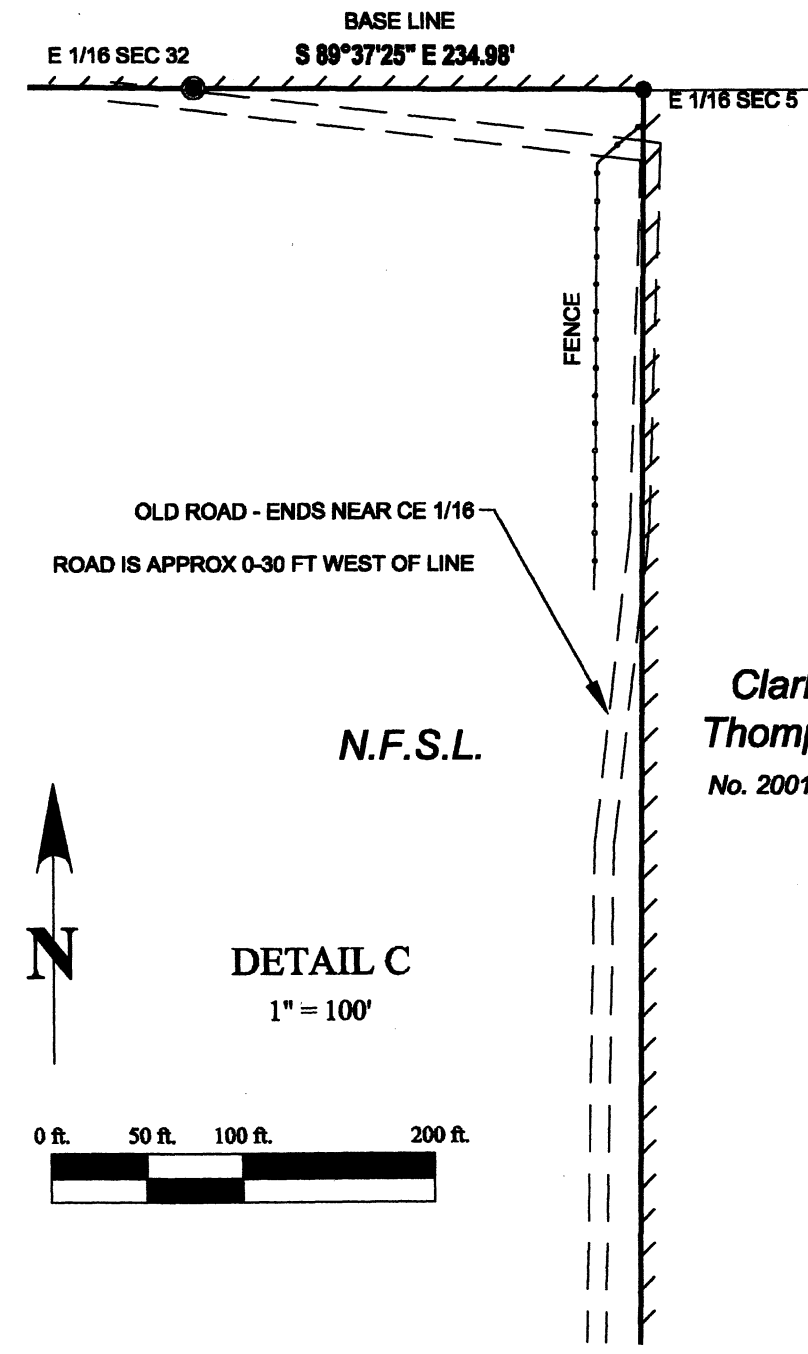
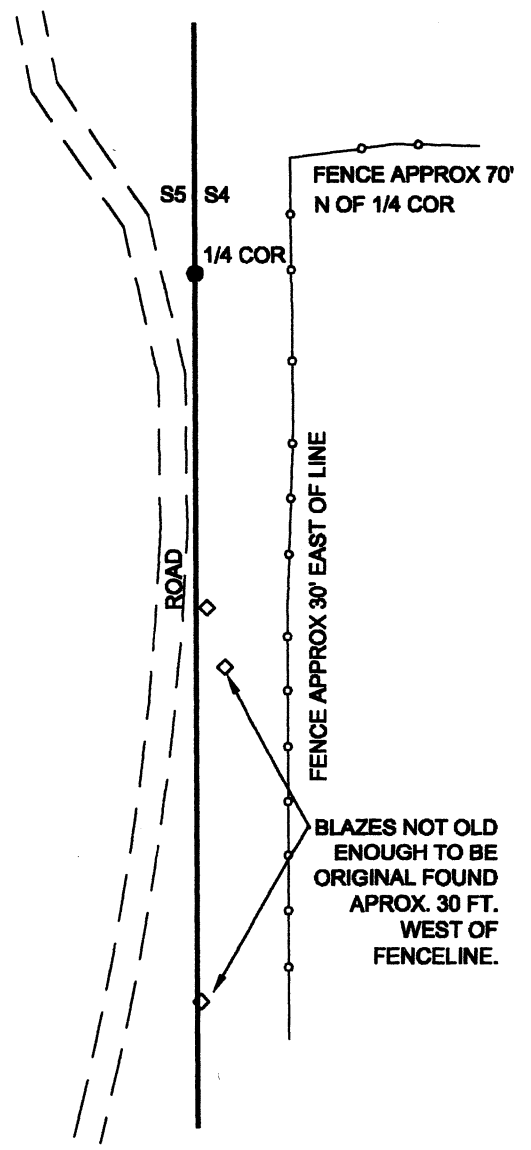
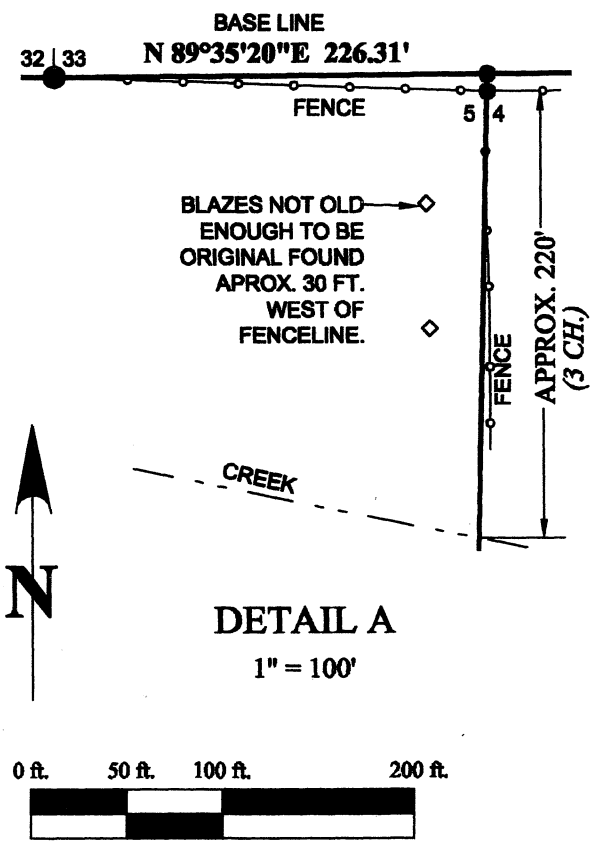
SECTIONS 29, 30, 31, 32, 33, 34, 35,

T. 1 N., R. 38 E., W.M.

SECTIONS 2, 3, 4, 5, 6, 8,

T. 1 S., R. 38 E., W.M.

UNION COUNTY, OREGON



### NARRATIVE

**Corners on the North-South line between Sections 29 & 30 and 31 & 32:**  
The section corners between Sections 19, 20, 29 & 30; Sections 29, 30, 31 & 32; the standard corner between Sections 31 & 32; and the quarter corner between Sections 29 & 30 have been perpetuated from original evidence.

The quarter corner between Sections 31 & 32 was proportioned by Howard Perry in 1980. Like Perry in 1980, no evidence of the original corner or accessories was found. While I found Perry's monument for this quarter corner to be 1.9 feet different from my calculated position, it has been in the ground since 1980 and has been used for subdividing Section 32. I accepted Perry's quarter corner and used its position to calculate and set the North sixteenth corner between Sections 31 & 32.

I find Griffith's monument for the South sixteenth corner between Sections 29 & 30 to be less than one foot from my calculated position and therefore accept and use its position. However, I find Griffith's monument for the North sixteen corner between Sections 29 & 30 to be over 10 feet different than my calculated position and do not accept its position. Since I do not need this monument for my survey I did not set another monument. (See note on drawing.)

### Corners on Baseline:

This portion of the Baseline was surveyed in a unique manner. Thompson set the closing corners in September of 1863, one month after Davenport set the standard corners in August of 1863. Thompson instead of surveying from the South and then tying the nearest standard corner, tied to the standard corner between Sections 35 & 36 (2.85 chains) and then surveyed West setting closing section and quarter corners. His notes do not contain any ties to Davenport's corners that were set one month earlier. On the other hand, he did not say that he did not find the corners. His notes on the Baseline were minimal, no topography calls and no mention of the type of monument set. Thompson stopped his survey of the Baseline at the North quarter corner of Section 5. Letters were written to the Bureau of Land Management concerning the resurvey of the Baseline and the proper subdivision of Section 5. (Reference: 9631 (OR 957), Union Co., OR, dated April 25 & August 20, 2003).

The land on both sides of the Baseline in the survey area has been under cultivation for many years. It appears that fences have been maintained in the same location for many years. Statements made by area residents were that while they did not know anything about the original corners, the fences have been in the same place for as long as they remember. Much of the private land in the area has been in the same family for generations. The current owners of the private land inside Section 5, Clark and Thompson, are descendants of the original patentee, Pfefferkorn. East of the survey area Griffith noted in his 1997 survey that the original survey was very accurate and that the fences fit the original survey well enough that he used some fence corners as the best evidence of the original corner. The standard corner between Sections 32 & 33 was also remonumented using a fence corner and the existing county road as the best available evidence by Perry in 1980. In the process of my survey I found existing fence corners that fit the original survey at the closing corner between Sections 4 & 5, the standard quarter corner on the South line of Section 33, and the standard corner between Sections 33 & 34. (See individual corner notes for more details.) David A. Schlaich, C.O.R., Greg Blackman, County Surveyor, and myself discussed the use of fences in this area as the best evidence of the original corner locations. The three of us agreed that considering the accuracy of the original survey, the length of time the fences have been perpetuated in the same location, and how well the fence corners fit the original survey, that they were the best evidence of many of the original corner locations on the Baseline. At the closing corner between Sections 4 & 5 I analyzed various mathematical ways to position the corner if I considered it lost. (Since we did not find Thompson's quarter corner one half mile west, the standard proportioning method wouldn't apply.) These positions were all within 10 ft. of the fence corner.

As discussed above, the standard corner between Sections 31 & 32 has been perpetuated from original evidence. The standard quarter corner on the South line of Section 32 is also a perpetuation of the original corner. As mentioned above the standard quarter corner on the South line of Section 33 was set at the fence corner, but there was

also evidence of the original corner in the area. There just was not enough evidence to determine the exact position of the corner. (See individual corner notes.)

At the East side of the survey is the closing corner between Sections 2 & 3. This corner was remonumented from a stone, first mentioned in the survey records in 1953. While there is no direct connection with the original record (Thompson doesn't mention what he set for a monument in the original survey), this corner has been accepted by several surveyors in the past. There is no evidence that this is not a perpetuation of the original corner; and based on conversations with County Surveyor Greg Blackman, it is likely that there are just missing remonumentation notes. Because of other similar situations, he believes there are some early remonumentation records missing.

The letter from the Bureau of Land Management notes that Griffith may have not set the standard corner for Sections 34 & 35 correctly. Griffith set the corner at record bearing and distance from the closing corner between Sections 2 & 3 (West 2.85 ch.). The problem is that the original notes and plats do not show a tie by Thompson between these corners. The tie used is the record tie between the standard and closing corners one mile east. I did find that the 2.85 chain tie is shown on the Assessor's plat between all of the standard and closing corners set by Thompson. I compared Griffith's position for this corner with proportioned positions using the South quarter corner of Section 33, the standard corner between Sections 33 & 34, and the various fence corners, all were within 7 ft. of Griffith's monument. Considering the fact that the original surveys on the Baseline were well executed and that the nearest corner to the west that has actual original evidence is two and a half miles away, I believe Griffith's use of the 2.85 chain offset does provide a better overall harmony as he stated on his plat.

### Section 5 Subdivision:

When Section 5 was platted, Thompson's bearings and distances for the East line of Section 5 were used in combination with Campbell's bearings and distances for the West and South line of Section 5. It is apparent from looking at the original plat that Thompson's North quarter corner for Section 5 was not used. After setting monuments at the original closing corner positions for the closing corners between Sections 4 & 5 and 5 & 6, I also set monuments at the intersection of the east and west sections lines with the standard parallel. I did not find any original evidence of the West or East quarter corners. I proportioned the position for these corners using the original closing corner positions. At the East quarter corner there were fences. (See Detail B.) However, I also discussed using these fences as the best available evidence of the original corner with Schlaich and Blackman and we agreed that there just wasn't enough supporting evidence to use these fences. The North quarter corner of Section 5 that controls the subdivision of Section 5 was considered as never having been set. Its longitudinal position was calculated using the original lot acreages to obtain parenthetical distances. Its latitudinal position was determined by using the standard corners East and West (the S 1/4 of S33 and the E 1/16 of S33). The East sixteenth on the North line of Section 5 was computed similarly. The section was then subdivided using standard procedures.

The section and quarter corners on the South line of Section 5 are all perpetuations of the original corners. I find the monument for the East sixteenth corner between Section 5 & 8 to be within one foot of my calculated position and therefore accept and use its position.

**Possible Encroachments:** There is an old logging (skid) road on the Forest Service side of the property line between the CE 1/6 of Section 5 and E 1/16 on the North line of Section 5. The centerline of the road ranges from being on the property line to approximately 30 feet west of the property line. There also appears to be old logging that goes to the East side of this road.

- LEGEND**
- Upgraded existing monument and maintained corner
  - Set monument
  - Property Line posted (+/- 1 ft.) with 6 ft. galvanized post or 6 ft. fiberglass posts and property boundary sign.
  - N.F.S.L. National Forest System Lands

**UNION COUNTY SURVEYOR**

Date Received 12/8/03  
Date Filed 1/31/04  
Filed By [Signature]  
File Number 046-2003

REGISTERED PROFESSIONAL LAND SURVEYOR

[Signature]  
OREGON  
July 25, 1990  
Evelyn R. Kalb  
2456  
EXPIRES: 06/30/2005

**CHESEBRO & KALB**  
Land Surveying & Boundary Consulting

P.O. Box 19  
Mill City, OR 97360

CREW: WALTER, CORDOZA, EDWARDS-HILL, CHESEBRO	
DRAWN BY: KALB	
CHECKED BY: CHESEBRO	
SHEET: 3 OF 9	JOB NO. 03-02
503-897-2722	

# RECORD OF SURVEY

## MT. EMILY CADASTRAL SURVEY

CONTRACT NO. 53-04R3-9-40C, TASK ORDER UMA-12

UMATILLA NATIONAL FOREST

July - September 2003

SECTIONS 29, 30, 31, 32, 33, 34, 35,

T. 1 N., R. 38 E., W.M.

SECTIONS 2, 3, 4, 5, 6, 8,

T. 1 S., R. 38 E., W.M.

UNION COUNTY, OREGON

U.S. Forest Service Corner Card, 1973. J. Banks, BLM Forester

Found: Mound of stone

30 in. P. pine N 40° E 55 lks. (36.3 ft.) dist. legible marks "S29 T1N R38E BT"

Set: New fir post and another mound of stone at corner from the only BT present. Original notes call for a fir instead of pine, in this location.

Howard L. Perry, PLS 1294, 1980, C.S. 38-80

Found stone mound & original BTs:

24 in. now 28 in. P. pine, with scribing "T1N R38E S29 BT" visible, bears N 40° E 36.3 ft. (N 40° E 55 lks.)

A down & rotting 12" D. fir with scribing "1N R38E S32" visible, bears S 8° E 116.8 ft. (S 8° E 177 lks)

Found scribed wood approx. 50 ft. downhill from SW BT

Found stump hole at NW BT

Set 5/8" x 30" rebar with yellow cap marked AP & A and scribed New BTs

8 in. P. pine scribed "T1N R38E S29 1099 BT" bears N 42° E 8.9 ft.

14 in. D. fir scribed "T1N R38E S32 1099 BT" bears S 83° E 24.6 ft.

12 in. D. fir scribed "T1N R38E S30 1099 BT" bears N 33° W 21.1 ft.

Duane I. Griffith, PLS 644, 1980, C.S. 73-80

Found monument of record.

Gary L. Langlitz, PLS 1099, 1983, C.S. 43-83

Found 5/8" iron pin.

**Description of corner evidence found:**

**Monument Found:**

A bent 5/8" diam. rebar with yellow plastic cap, up 2', in partial stone collar.

**Accessories Found:**

A ponderosa pine, 27 ins. diam., bears N 40° E 36.3 ft., alive & healthy with scribing visible on a partially healed single blaze. (Orig. BT)

Did not look for or find other original BTs

A sickly leaning ponderosa pine 10 ins. diam. bears N 42° E 8.9 ft., with scribing visible on a partially healed double blaze. (Perry BT)

A Douglas fir, 17 ins. diam., bears S 83° E 24.6 ft., alive & healthy with scribing visible on a partially healed double blaze. (Perry BT)

A Douglas fir, 16 ins. diam., bears N 33° W 21.1 ft., alive & healthy with healed blaze. (Perry BT)

(Perry BT)

A Douglas fir, 16 ins. diam., bears N 33° W 21.1 ft., alive & healthy with healed blaze. (Perry BT)

(Perry BT)

**Description of monument and accessories I established to**

**perpetuate the original location of this corner:**

**Monument Set:**

Replaced existing monument with a 3 1/4 in. aluminum cap marked as shown on 5/8" x 36 in. rebar buried 24 ins. in the ground. The bottom 18 ins. is in a concrete filled drill hole with a magnet at its base, with rock mound.

**Accessories Set:**

A ponderosa pine, 35 ins. diam. bears S 33 1/2° W 128.5 ft. marked T1N R38E S31 BT on a double baze with a brass washer marked PLS 2456.

Removed Perry's northeast BT that was sickly and leaning for better satellite visibility.

Red paint, posts and signs added as needed.

NAD 83 (CORS 2002) Coordinates:

Geographic State Plane (North Zone)

45°31'46.8062" N N 209,811.884 Meters

118°05'50.3749" W E 2,687,645.940 Meters

Convergence 1° 42'14"

REGISTERED  
PROFESSIONAL  
LAND SURVEYOR

Evelyn R. Kalb 12/20/04  
OREGON  
July 25, 1990  
Evelyn R. Kalb  
2456  
EXPIRES: 06/30/2005

CHESEBRO  
& KALB

Land Surveying &  
Boundary Consulting

P.O. Box 19  
Mill City, OR 97360

UNION COUNTY  
SURVEYOR

Date Received 12/8/03

Date Filed 1/30/04

Filed By Evelyn R. Kalb

File Number 046-2003

File Number 046-2003

File Number 046-2003

File Number 046-2003

CREW: WALTER, CORDOZA,  
EDWARDS-HILL, CHESEBRO

EDWARDS-HILL, CHESEBRO

DRAWN BY: KALB

CHECKED BY: CHESEBRO

SHEET: 4 OF 9

JOB NO. 03-02

03-02

03-02

03-02

03-02

03-02

03-02

03-02

03-02

Duane I. Griffith, PLS 644, 1980, C.S. 73-80, Union Co. 79-84R

Found: stone mound and original BTs

A 12" fir dead and down bears S 1° E 32.3 feet, scribes visible

A 12" fir dead bears S 15° W 36.3 feet, scribes visible

Set: In stone mound I set 2 1/2" x 30" iron pipe with brass cap 20" in ground, from which:

A 18" fir bears N 19° E 64.0 feet marked 1/4 S29 BT

A 10" fir bears N 28° W 90.8 feet marked 1/4 S30 BT

Raised mound of stone

Brass washer nailed to BT blaze.

**Description of corner evidence found:**

**Monument Found:**

A 2 1/2" brasscap, marked as shown, on a 2 1/2" (not 2") galvanized iron pipe, in good condition in rock mound, 2 ft. base & 0.5 ft. high, 10" showing above the ground.

**Accessories Found:**

No remains of the original northeast BT were found.

Found remains of original southeast fir BT, with scribing visible on a single blaze, downhill of record position. Tree was broken off and rolled to its current position.

A Douglas fir, 22 ins. diam. bears N 19° E 64.0 ft. with healed double blaze. (Griffith BT)

A Douglas fir, 15 ins. diam. bears N 28° W 90.8 ft. with healed double blaze. (Griffith BT)

**Description of monument and accessories I established to**

**perpetuate the original location of this corner:**

A Douglas fir, 21 ins. diam., bears S 33 3/4° E 51.2 ft. marked XBT with brass washer stamped PLS 2456.

A white fir, 13 ins. diam. bears S 24 1/2° W 86.0 ft. marked XBT with brass washer stamped PLS 2456.

Red paint, posts and signs added as needed.

NAD 83 (CORS 2002) Coordinates:

Geographic State Plane (North Zone)

45°32'12.6818" N N 210,609.805 Meters

118°05'51.1666" W E 2,687,605.021 Meters

Convergence 1° 42'14"

**History of original corner establishment:**

Duane I. Griffith, PLS 644, 1980, C.S. 73-80, Union Co. 83-84R

At proportionate distance I set 2 1/2" x 30" iron pipe with brass cap 22" in ground, from which:

A 12" P. Pine bears N 23° E 23.5 feet, marked S 1/16 S29 BT

A 13" fir bears N 73° W 36.7 feet marked S 1/16 S30 BT

Raised mound of stone

Brass washer nailed to BT blaze

**Description of corner evidence found:**

**Monument Found:**

A 2 1/2" brasscap, marked as shown, on a 2 1/2" galvanized iron pipe, firmly set in a rock collar, 8" showing above the ground.

**Accessories Found:**

A ponderosa pine, 15 ins. diam. bears N 23° E 23.5 ft., alive & healthy with a healed double blaze.

A fir, 19 ins. diam. bears N 73° W 36.7 ft., alive & healthy with a healed double blaze.

**Description of monument and accessories I established to**

**perpetuate the original location of this corner:**

Red paint, posts and signs added as needed.

NAD 83 (CORS 2002) Coordinates:

Geographic State Plane (North Zone)

45°31'59.7370" N N 210,210.627 Meters

118°05'50.7746" W E 2,687,625.402 Meters

Convergence 1° 42'14"

**History of original corner establishment:**

John W. Kimbrell, 1891, Contract 579

Set post 4 ft. long 4 ins. square 12 ins. in the ground. Note - could not set deeper on account of rock. Raised mound of stone 1 1/2 ft. high and 3 ft. wide at base around post.

A fir 24 ins. in dia. bears N 40° E 55 lks. (36.3 ft.) dist. marked T1N R38E S29 BT

A fir 10 ins. in dia. bears S 8° E 177 lks. (116.8 ft.) dist. marked T1N R38E S32 BT

A fir 12 ins. in dia. bears S 38° W 146 lks. (96.4 ft.) dist. marked T1N R38E S31 BT

A fir 8 ins. in dia. bears N 39° W 112 lks. (73.9 ft.) dist. marked T1N R38E S30 BT

**History of original corner establishment:**

John W. Kimbrell, 1891, Contract 579

Set stone 24 x 10 x 6 ins. 6 ins. in the ground. Note - could not set it deeper on account of rock underneath, marked with 2 notches on S and 5 notches on E edges.

A pine 14 ins. in dia. bears S 31 1/2° E 79 lks. (52.1 ft.) dist. marked T1N R38E S29 BT

A pine 14 ins. in dia. bears S 64° W 219 lks. (144.5 ft.) dist. marked T1N R38E S30 BT

A pine 22 ins. in dia. bears N 87° W 217 lks. 143.2 ft.) dist. marked T1N R38E S19 BT

No other tree within bearing distance

Raised mound of stone 1 1/2 ft. high 3 ft. wide at base alongside.

Barry B. Barbour, L.S. 1051, 1978, Union Co. 72-84R

Found: No trace of 24" x 16" x 6" (Barbour's record does state 16" rather than 10" as in the original notes) set stone on steep north slope. Some stone laying in the area from possible mound.

Found down tree on top of ridge scribed T1N R38E S29 BT, S 31° E about 185 ft. Notes call for 79 links. (200 link error).

Found standing pine snag 30 in. in dia. scribed T1N R38E S19 FT, N 87° W 142 ft. (217 links).

Found badly decomposed tree laying south of ridge, entire blaze remaining scribed T1N R38E S30 BT. Unable to locate exact original position, (record S 64° W 219 links).

Set: 2 1/2" x 30" galvanized pipe with brass cap, 22 ins. in the ground with mound of stone to cap, from which:

A fir 14 in. dia. bears N 70° (The plat is missing the E), 62.1 feet, scribed T1N R38E S20 BT

A pine 18 in. dia. bears S 42° E 49.9 feet, scribed T1N R38E S29 BT

A fir 18 in. dia. bears S 59° W 15.5 feet, scribed T1N R38E S30 BT

A fir 17 in. dia. bears N 11° W 67.5 feet, scribed T1N R38E S19 BT

Placed 54-3s and 54-4s on BTs and standing snag. Painted blazes red. Painted 6 in. red band around BTs. Placed brass washer stamped PLS 1051 on foot blazes. Places 54-2 and 54-4 on steel fence post 3 ft. north of corner. Corner about 125' north of Smith Ridge.

Duane I. Griffith, PLS 644, 1980 & 1981, C.S. 73-80 & C.S. 28-81

Found monument of record.

Forest Service Corner Card, 1982, R. Panches, Party Chief

Found: 2 1/2 in. brass cap set 4 in. above ground.

A 14 in. fir N 70° E 62 feet

An 18 in. pine S 42° E 50 feet

An 18 in. fir (not pine) S 59° W 15.5 feet

A 17 in. fir N 11° W 67.5 feet

A 17 in. fir N 11° W 67.5 feet

A 17 in. fir N 11° W 67.5 feet

A 17 in. fir N 11° W 67.5 feet

A 17 in. fir N 11° W 67.5 feet

A 17 in. fir N 11° W 67.5 feet

A 17 in. fir N 11° W 67.5 feet

A 17 in. fir N 11° W 67.5 feet

A 17 in. fir N 11° W 67.5 feet

A 17 in. fir N 11° W 67.5 feet

A 17 in. fir N 11° W 67.5 feet

A 17 in. fir N 11° W 67.5 feet

A 17 in. fir N 11° W 67.5 feet

A 17 in. fir N 11° W 67.5 feet

A 17 in. fir N 11° W 67.5 feet

A 17 in. fir N 11° W 67.5 feet

A 17 in. fir N 11° W 67.5 feet

A 17 in. fir N 11° W 67.5 feet

A 17 in. fir N 11° W 67.5 feet

A 17 in. fir N 11° W 67.5 feet

A 17 in. fir N 11° W 67.5 feet

A 17 in. fir N 11° W 67.5 feet

A 17 in. fir N 11° W 67.5 feet

A 17 in. fir N 11° W 67.5 feet

A 17 in. fir N 11° W 67.5 feet

A 17 in. fir N 11° W 67.5 feet

A 17 in. fir N 11° W 67.5 feet

A 17 in. fir N 11° W 67.5 feet

A 17 in. fir N 11° W 67.5 feet

A 17 in. fir N 11° W 67.5 feet

A 17 in. fir N 11° W 67.5 feet

A 17 in. fir N 11° W 67.5 feet

A 17 in. fir N 11° W 67.5 feet

A 17 in. fir N 11° W 67.5 feet

A 17 in. fir N 11° W 67.5 feet

A 17 in. fir N 11° W 67.5 feet

A 17 in. fir N 11° W 67.5 feet

A 17 in. fir N 11° W 67.5 feet

A 17 in. fir N 11° W 67.5 feet

A 17 in. fir N 11° W 67.5 feet

A 17 in. fir N 11° W 67.5 feet

A 17 in. fir N 11° W 67.5 feet

A 17 in. fir N 11° W 67.5 feet

A 17 in. fir N 11° W 67.5 feet

A 17 in. fir N 11° W 67.5 feet

A 17 in. fir N 11° W 67.5 feet

A 17 in. fir N 11° W 67.5 feet

A 17 in. fir N 11° W 67.5 feet

A 17 in. fir N 11° W 67.5 feet

A 17 in. fir N 11° W 67.5 feet

A 17 in. fir N 11° W 67.5 feet

A 17 in. fir N 11° W 67.5 feet



# RECORD OF SURVEY

## MT. EMILY CADASTRAL SURVEY

CONTRACT NO. 53-04R3-9-40C, TASK ORDER UMA-12

UMATILLA NATIONAL FOREST

July - September 2003

SECTIONS 29, 30, 31, 32, 33, 34, 35,

T. 1 N., R. 38 E., W.M.

SECTIONS 2, 3, 4, 5, 6, 8,

T. 1 S., R. 38 E., W.M.

UNION COUNTY, OREGON

### History of original corner establishment:

Not previously set.

### Description of corner evidence found:

Not previously set.

### Description of monument and accessories I established to perpetuate the original location of this corner:

#### Monument Set:

A 3 1/4 in. aluminum cap on a 5/8" x 30" rebar buried 29 ins. in the ground, bottom 26 ins. in concrete filled drill hole, magnet alongside, with rock collar.

#### Accessories Set:

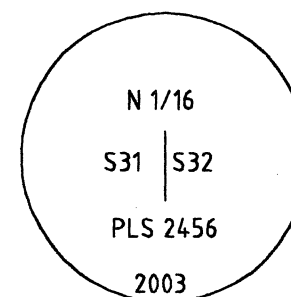
A Douglas fir, 16 ins. diam., bears S 82 1/2° E 12.1 ft. marked N 1/16 S32 BT on a double blaze with brass washer marked PLS 2456.

A ponderosa pine, 29 ins. diam., bears S 80 1/2° W 67.7 ft., marked N 1/16 S31 BT on a double blaze with a brass washer marked PLS 2456.

Red paint, posts and signs added as needed.

#### NAD 83 (CORS 2002) Coordinates:

Geographic	State Plane (North Zone)
45°31'33.2876" N	N 209,394.488 Meters
118°05'50.7786" W	E 2,687,649.594 Meters
Convergence 1° 42'14"	



### History of original corner establishment:

John W. Kimbrell, 1891, Contract No. 579

A fir 10 ins. in dia. which I mark 1/4 S on W face, from which

A fir 7 ins. in dia. bears N 40° E 7 lks. (4.6 ft.) dist. marked 1/4S BT

A fir 4 ins. in dia. bears N 35° W 5 lks. (3.3 ft.) dist. marked 1/4S BT

Howard L. Perry, PLS 1294, 1980, C.S. 38-80

Set at proportioned position a 5/8" x 30" rebar with yellow cap marked AP & A

An 8" W. fir scribed "1/4 S32 BT" bears N 20° E 12.3 ft. with brass washer stamped "LS 1294".

A 6" W. fir scribed "1/4 S31 BT" bears S 84° W 5.5 ft. with brass washer stamped "LS 1294".

### Description of corner evidence found:

#### Monument Found:

A 5/8" diam. rebar with a yellow plastic cap in rock collar, 5" above the ground.

#### Accessories Found:

A fir, 10 ins. diam. bears N 20° E 12.3 ft., alive & healthy with scribing visible on a partially healed double blaze. (Perry BT)

A fir, 9 ins. diam., bears S 84° W 5.5 ft., with scribing visible on a partially healed double blaze. (Perry BT) High-stumped this BT for visibility.

Note: No sign of original corner or its accessories. Few, if any, trees are of sufficient size to be old enough for the original corner or its accessories.

### Description of monument and accessories I established to perpetuate the original location of this corner:

#### Monument Set:

A 3 1/4 in. aluminum cap on the existing 5/8" rebar up 3 ins. in a rock collar.

#### Accessories Set:

A ponderosa pine, 9 ins. diam., bears S 61 1/2° E 17.5 ft. marked X BT on a double blaze with brass washer marked PLS 2456.

A Western Larch, 14 ins. diam., bears S 87 1/4° W 12.0 ft., marked 1/4 S31 BT on a double blaze with a brass washer marked PLS 2456.

A white fir, 14 ins. diam., bears N 36° W 46.4 ft., marked X BT on a double blaze with a brass washer marked PLS 2456.

Red paint, posts and signs added as needed.

#### NAD 83 (CORS 2002) Coordinates:

Geographic	State Plane (North Zone)
45°31'19.7691" N	N 208,977.092 Meters
118°05'51.1822" W	E 2,687,653.248 Meters
Convergence 1° 42'14"	

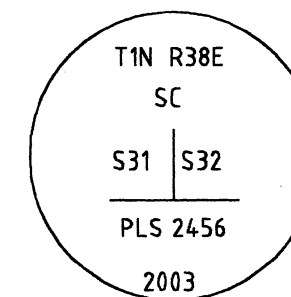
### History of original corner establishment:

Timothy W. Davenport, Aug 12, 1863, Contract No. 102

Set: post on the south side of ridge dipping to the valley, from which:

A pine 16 inch in dia. bears N 60° W 215 lks. (141.9 ft.) dist.

A pine 16 inch in dia. bears N 58° E 237 lks. (156.4 ft.) dist.



John W. Kimbrell, 1891, Contract No. 579

Found: decayed post lying on the ground 5 lks. South of mound of stone at the corner point partly fallen down.

Set: new post 4 ft. long 4 ins. square 12 ins. in the ground. I could not drive it deeper on account of rock. Rebuilt mound of stone 4 ft. wide at base 1 1/2 ft. high alongside of post, from which

A pine 16 ins. in dia. bears N 60° W 215 lks. (141.9 ft.) dist. marked TIN R38E S31 BT

A pine 16 ins. in dia. bears N 58° E 237 lks. (156.4 ft.) dist. marked TIN R38E S32 BT

J. Banks, BLM Forester, 1973

Found: no corner monument remains

1 BT standing - with scribing

1 BT down & rotting

Howard L. Perry, PLS 1294, 1980, C. S. 38-80

Found: original BTs and remains of stone mound

A 16" now 32" P. Pine with illegible scribing visible bears N 60° W 141.9 (N 60 W 215 lks)

A down & rotting 16" now 24" P. Pine, no marks remaining, bears N 58° E 142.5 ft. (N 58° E 237 lks) (Note: original distance appears to be slope distance)

Set: 5/8" x 30 rebar with yellow plastic cap marked AP & A

A 18" P.Pine, scribed "TIN R38E S31 1099 BT" bears N 86° W 74.9 ft.

### Description of corner evidence found:

#### Monument Found:

A 5/8" diam. rebar with a faded yellow plastic cap in rock collar, 4" above the ground.

#### Accessories Found:

A down ponderosa pine, 24 ins. diam., bears N 58° E 141.9 ft., (record 156.4) with a definite blaze with faint scribing visible on a single blaze. (Orig. BT)

A ponderosa pine, 36 ins. diam. bears N 60° W 141.9 ft., faint scribing visible on a single blaze. (Orig. BT)

A ponderosa pine, 24 ins. diam., bears N 86° W 74.9 ft., with a mostly healed face some scribing visible on a single blaze. (Langlitz BT)

### Description of monument and accessories I established to perpetuate the original location of this corner:

#### Monument Set:

Replaced yellow plastic cap with a 2 in. aluminum cap marked as shown.

#### Accessories Set:

The closing corner on the Baseline between Sections 5 & 6 bears N 89°40'04" E 314.11 ft.

The amended closing corner between Sections 5 & 6 bears S 87°43'46" E 314.21 ft.

Red paint, posts and signs added as needed.

#### NAD 83 (CORS 2002) Coordinates:

Geographic	State Plane (North Zone)
45°30'52.7116" N	N 208,141.646 Meters
118°05'52.0349" W	E 2,687,659.584 Meters
Convergence 1° 42'13"	

### History of original corner establishment:

Timothy W. Davenport, Aug 12, 1863, Contract No. 102

Set: post, from which:

A pine 6 ins. in dia. bears N 40° E 66 lks. (43.6 ft.) dist.

A pine 30 ins. in dia. bears S 50° W 30 lks. (19.8 ft.) dist.

John W. Kimbrell, 1891, Contract No. 579

Found: post, decayed, 3 ft. long 3 ins. square, post has fallen down but I find 12 ins. of point in the ground, from which

A pine 6 ins. in dia. bears N 40° E 66 lks. (43.6 ft.) dist. marked 1/4 S BT

A pine 30 ins. in dia. bears S 50° W 30 lks. (19.8 ft.) dist. marked 1/4 S BT

Howard L. Perry, PLS 1294, 1980, C.S. 38-80

Found: original BTs

A 6" pine, now 14" stump decayed, with scribing "BT" bears N 40° E 43.6 ft. (N 40° E 66 lks.)

A 30" pine stump flush in ground, no marks remaining, bears S 54° W 19.8 ft. (S 50° W 30 lks.)

Set: 2 1/2" x 30" galvanized iron pipe with brass cap

A 14" D. fir scribed "1/4 S32 1099 BT" bears S 84° W 124.1 ft.

A 22" P. pine scribed "1/4 S32 1099 BT" bears N 12° W 127.9 ft.

Gary L. Langlitz, PLS 1099, 1995, C.S. 35-95

Found: 2" galvanized iron pipe with brass cap, firmly set, and marked as described on Survey 38-80, with two bearing trees, alive and in good condition, as described on survey 38-80.

### Description of corner evidence found:

#### Monument Found:

A 2 1/2 in. brass cap on a 2 1/2 in. galvanized iron pipe in a rock mound 2 ft. base and 1 ft. high with a guard post easterly 2.0 ft.

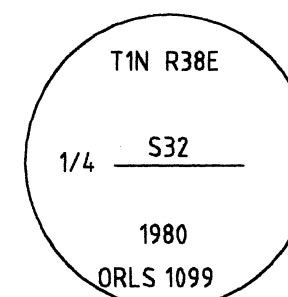
#### Accessories Found:

A pine stump, 14 ins. diam., bears N 40° E 43.6 ft., with visible scribing. (Orig. BT)

A pine stump, very rotten, bears S 50° W 19.8. (Orig. BT)

A Douglas fir, 20 ins. diam., bears S 84° W 123.6 ft. (record 124.1 ft.), with healed double blaze. (Perry BT)

A ponderosa pine, 25 ins. diam., bears N 12° W 126.8 ft. (record 127.9 ft.), with scribing visible on a double blaze. (Perry BT)



### Description of monument and accessories I established to perpetuate the original location of this corner:

#### Accessories Set:

The North quarter corner for Section 5 bears S89°40'41"E 242.97 ft.

Red paint, posts and signs added as needed.

#### NAD 83 (CORS 2002) Coordinates:

Geographic	State Plane (North Zone)
45°30'52.8657" N	N 208,170.854 Meters
118°05'14.2188" W	E 2,688,479.801 Meters
Convergence 1° 42'40"	

### History of original corner establishment:

Howard L. Perry, PLS 1294, 1980, C.S. 38-80

Set: 5/8" x 30 rebar with yellow plastic cap marked AP & A

Gary L. Langlitz, PLS 1099, 1995, C.S. 35-95

Monument set by Survey 38-80 not found.

Set: 5/8" x 30" iron rod (concrete reinforcing rod) with yellow plastic cap marked AP & A.

### Description of corner evidence found:

#### Monument Found:

A 5/8" rebar with plastic cap marked AP & A. Searched a 15 ft. radius around existing rebar for missing rebar, nothing found.

#### Accessories Found:

None set previously, none found.

### Description of monument and accessories I established to perpetuate the original location of this corner:

#### Monument Set:

Replaced plastic cap on the existing rebar with a 3 1/4" aluminum cap marked as shown. The new cap was placed on the existing rebar.

#### Accessories Set:

A white fir, 10 ins. diam., bears N 6 1/2° E 27.50 ft., marked E 1/16 S32 BT on a double blaze.

A Douglas fir, 19 1/2 ins. diam., bears N 88 1/2° E 40.27 ft., marked E 1/16 S32 BT on a double blaze.

Red paint, posts and signs added as needed.

#### NAD 83 (CORS 2002) Coordinates:

Geographic	State Plane (North Zone)
45°30'52.7926" N	N 208,180.612 Meters
118°04'55.6981" W	E 2,688,881.645 Meters
Convergence 1° 42'53"	

UNION COUNTY  
SURVEYOR

Date Received 12/18/03

Date Filed 1/30/04

Filed By E. J. Shaw

File Number 046-2003

REGISTERED  
PROFESSIONAL  
LAND SURVEYOR

Evelyn R. Kalb  
OREGON  
July 25, 1990  
Evelyn R. Kalb  
2456  
EXPIRES: 06/30/2005

CHESEBRO  
& KALB

Land Surveying &  
Boundary Consulting

P.O. Box 19  
Mill City, OR 97360

CREW: WALTER, CORDOZA,  
EDWARDS-HILL, CHESEBRO

DRAWN BY: KALB  
CHECKED BY: CHESEBRO

SHEET: 5 OF 9  
JOB NO. 03-02

503-897-2722

# RECORD OF SURVEY

## MT. EMILY CADASTRAL SURVEY

CONTRACT NO. 53-04R3-9-40C, TASK ORDER UMA-12

UMATILLA NATIONAL FOREST

July - September 2003

SECTIONS 29, 30, 31, 32, 33, 34, 35,

T. 1 N., R. 38 E., W.M.

SECTIONS 2, 3, 4, 5, 6, 8,

T. 1 S., R. 38 E., W.M.

UNION COUNTY, OREGON

### History of original corner establishment:

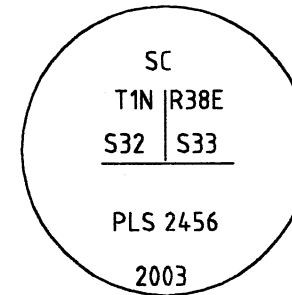
**Timothy W. Davenport, Contract No. 102, Aug. 12, 1863**

Set: post near foot of ridge, from which:

A red fir 6 inch in dia. bears N 70° E 49 lks. (32.3 ft.) dist.  
A red fir 14 inch in dia. bears N 15° W 21 lks (13.9 ft.) dist.

**Joseph G. Gray, June 21, 1867**

Began his survey of the section line between Sections 32 & 33 at this corner but did not describe the corner. The nearest topography call is a stream course East at 55 ch.



**John W. Kimbrell, Contract 579, Aug 13, 1891**

Found: 4 ft. long post 4 ins. square 24 ins. in the ground, partially decayed, from which

A red fir 14 ins. in dia. bears N 15° W 21 lks. (13.9 ft.) dist. marked T1N R38E S32 BT  
A red fir 6 ins. in diam. bears N 70° E 49 lks. (32.3 ft.) dist. marked T1N R38E S33 BT

**Forest Service Corner Card, B. Moore, 1979**

Found: Valsetz Lumber Co. location poster. Fence East, West, & North. 12" fir w/closed blaze - possible BT.

**Howard L. Perry, PLS 1294, 1980, C.S. 38-80**

Based on the distance and alignment relationships shown along the South line of the Section and the present location of Hacker Road which was surveyed and described in 1911, we feel that the fence corner shown on this survey map represents the best available evidence of the original position of the Southeast corner of Section 32. Hacker Road is shown by plat to be located along various 1/16 lines in Section 33 as though the Sections were actually the dimensions recorded in the original survey (80.00 chains). As existing, Hacker Road is very nearly 1320 feet North of the Southeast corner of Section 32 which is in agreement with its description, however, the roadway located in Section 33 is not in its settled position due to the excess in length found along the East side of Section 32.

Set: 5/8" x 30" rebar with yellow cap marked AP & A.

9" D. fir scribed "T1N R8ES33 BT" bears N 49 1/2° E 22.2 ft. with brass washer stamped "LS 1294".

16" D. fir scribed "T1N R38E S32 BT" bears N 63° 1/2 W 24.0 ft., with brass washer stamped "LS 1294".

**Gary L. Langlitz, PLS 1099, 1983, C.S. 43-83**

Found: 5/8" iron pin.

**Gary L. Langlitz, PLS 1099, 1995, C.S. 35-95, Union Co. 026-1995R**

Found: Monument per survey 38-80 was not found.

A 10" D. fir (1980 NE BT) now a 6' tall stump with scribing "T1N R38E S33 BT" and brass washer marked "LS 1294" visible on an unhealed double blaze bears N 49 1/2° E 22.2 feet.

An 18" D. fir (1980 NW BT) alive and in good condition with scribing "T1N R38E S32 BT" and brass washer marked "LS 1294" visible on a partially-healed double blaze bears N 63 1/2° W 24.0 feet.

Set: 5/8" x 30" iron rod (concrete reinforcing rod) by reference to the existing bearing trees established by survey 38-80, with yellow plastic cap attached, marked "AP&A", buried 6" in the middle of a gate in an E-W fence and in a dirt roadway. From which:

A 5/8" x 30" iron rod (concrete reinforcing rod) with yellow plastic cap attached, marked "AP&A" bears S 18° E 47.9 feet.

A 5/8" iron rod (concrete reinforcing rod) with yellow plastic cap attached marked "AP&A" bears S 47° W 89.4 feet.

### Description of corner evidence found:

**Monument Found:**

A 5/8" diam. rebar with a yellow plastic cap 0.3 ft. below the ground under a gate in an East-West fence line.

**Accessories Found:**

No evidence of the original corner post or its accessories were found.

A 10 in. diam. x 6 ft. high Douglas fir stump bears N 49 1/2° E 22.2 ft. with full scribing visible. (Perry BT)

A 5/8" rebar with yellow plastic cap marked APA flush with the ground bears S 18° E 47.9 ft. (Langlitz RM)

A 5/8" rebar with yellow plastic cap marked APA flush with the ground bears S 47° W 89.4 ft. (Langlitz RM)

A Douglas fir, 20 ins. diam. bears N 63 1/2° W 24.0 ft., alive & healthy with partially healed blaze with visible scribing. (Perry BT)

### Description of monument and accessories I established to perpetuate the original location of this corner:

**Monument Set:**

Replaced yellow plastic cap with a 3 1/4" standard U.S.F.S. aluminum cap, marked as shown, on the existing 5/8" rebar. Cap is 4" below the ground.

**Accessories Set:**

A white fir, 15 ins. diam. bears N 8 1/2° E 91.8 ft. scribed T1N R38E S33 SC BT on a double blaze with a brass washer marked PLS 2456.

Red paint, posts and signs added as needed.

**NAD 83 (CORS 2002) Coordinates:**

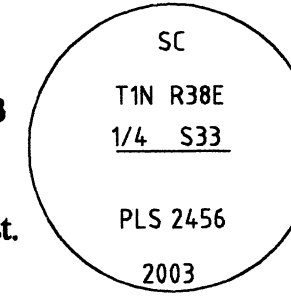
Geographic State Plane (North Zone)  
45°30'52.7070" N N 208,190.017 Meters  
118°04'37.1677" W E 2,689,283.710 Meters  
Convergence 1° 43'06"

### History of original corner establishment:

**Timothy W. Davenport, Contract No. 102, Aug 12, 1863**

Set post, from which:

A pine 16 ins. in dia. bears N 55° E 14 lks. (9.2 ft.) dist.  
A pine 16 ins. in dia. bears N 10° W 24 lks (15.8 ft.) dist.



### Description of corner evidence found:

I find an old fence corner within 10 ft. of the proportioned position. At record bearing and distance for the northeast BT I find an old fir stump. Just beyond this stump is an old stump (possibly a pine). Both are too rotted and cut too low to tell if they were BTs. At the record bearing and distance for the northwest BT I find a possible stumphole. About 10 ft. north of the fence corner I find a slab of wood with an old weathered face. There are no marks visible, but its dimensions of 5 1/2" x 17" long make it appear to be a BT face. Just beyond this face is an old rotted log (the source of the weathered face), which probably came from the stumphole.

As the evidence shows I am in the right area but there is not enough to definitely determine the exact original location, I accept the fence corner as the best available evidence of the location of the original corner.

### Description of monument and accessories I established to perpetuate the original location of this corner:

**Monument Set:**

A 3 1/4" aluminum cap, marked as shown, on a 2 1/2" x 30" aluminum pipe (standard U.S.F.S. aluminum monument) with rock collar. Cap is set on the East side of the fence corner and as close as feasible.

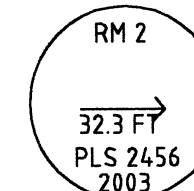
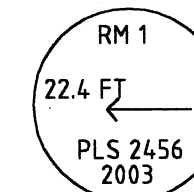
**Accessories Set:**

A Deep 1 magnet buried 12 inches bears N 38°37'04" E 11.0 ft.

A 2 1/2" aluminum cap, marked as shown, on a 5/8" x 24" rebar bears S 87°10'09" E 22.4 ft.

A 2 1/2" aluminum cap, marked as shown, on a 5/8" x 24" rebar bears N 89° 32'23"W 32.3 ft.

Red paint, posts and signs added as needed.



**NAD 83 (CORS 2002) Coordinates:**

Geographic State Plane (North Zone)  
45°30'52.8863" N N 208,219.712 Meters  
118°04'00.1217" W E 2,690,087.192 Meters  
Convergence 1° 43'32"

### History of original corner establishment:

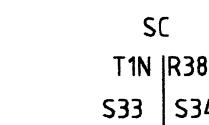
**Timothy W. Davenport, Contract No. 102, Aug 12, 1863**

Set post, from which:

A pine 40 inch in dia. bears N 40 E 39 lks. (25.7 ft.) dist.  
A pine 10 inch in dia. bears N 60 W 43 lks. (28.4 ft.) dist.

**Joseph G. Gray, 1867**

Began his survey of the section line between Sections 33 & 34 at this corner but did not describe the corner. He made no topography calls on his survey line between Sections 33 & 34.



### Description of corner evidence found:

I find an old fence corner within 12 ft of the proportioned position. It appears that this fence has been perpetuated in the same place and used as the surrounding owners property corner for a very long period of time. There are some old fir trees in the corner area, but none with evidence of a face. There are no pines in the corner area. Most of the area has been cultivated, so any evidence of the original corner, except for the fences, is gone.

### Description of monument and accessories I established to perpetuate the original location of this corner:

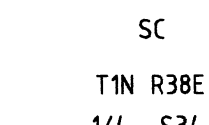
As I did not need this corner to complete my survey, I did not remonument this corner.

### History of original corner establishment:

**Timothy W. Davenport, Contract No. 102 Aug 12, 1863**

Set post, from which:

A pine 8 inch in dia. bears N 50° E 10 lks. (6.6 ft.) dist.  
A pine 16 inch in dia. bears N 15° W 16 lks. (10.6 ft.) dist.



### Description of corner evidence found:

There are no pines in the corner area. Most of the area has been cultivated, so any evidence of the original corner is gone. There is an agricultural road between the cultivated farm fields. The west edge of the road appears to be used as the property boundary. The road ends at an irrigation ditch that runs along the baseline. The intersection of the west edge of the road and the irrigation ditch is within 7 ft. of the proportioned position.

### Description of monument and accessories I established to perpetuate the original location of this corner:

As I did not need this corner to complete my survey, I did not remonument this corner.

### History of original corner establishment:

**Timothy W. Davenport, Contract No. 102, Aug 13, 1863**

Set post, from which:

A pine 40 inch in dia. bears N 62° E 143 lks. (94.3 ft.) dist.  
A pine 24 inch in diam. bears S 3° E 156 lks. (103.0 ft.) dist.  
A pine 36 inch in dia. bears N 8° W 227 lks. (149.8 ft.) dist.

**Joseph G. Gray, 1867**

Began his survey of the section line between Sections 33 & 34 at this corner but did not describe the corner.

**Duane I. Griffith, PLS 644, 1997, C.S. 022-1997, Union Co. 040-1997R**

Found: Nothing, area is under cultivation. The position is on the North side of a ditch.

Set: 2 1/2" x 30" aluminum pipe with cap at "record bearing and distance" "from existing monument marking Sections 2 & 3", 27 ins. in the ground. (Note: I find no official record giving the bearing and distance from the closing corner between Sections 2 & 3 to the standard corner. I find no indication of where Griffith's record bearing and distance came from. The tie could have been an intentional use of the tie by Davenport one mile east as the distance between the standard and closing corners should not have change very much considering the accuracy of the original surveys and the flat terrain. It could also have come from the Assessor's map, which lists the same tie all the way along Davenport's resurvey of the Baseline.) From which:

A 5/8" x 30" rebar bears N 67° E 8.65 feet, with 1 1/2" aluminum cap marked "UCS NE RP".

A 5/8" x 30" rebar bears S 40° E 9.22 feet, with 1 1/2" aluminum cap marked "UCS SE RP".

A 5/8" x 30" rebar bears S 40° W 8.85 feet, with 1 1/2" aluminum cap marked "UCS SW RP".

A 5/8" x 30" rebar bears N 75° W 10.30 feet, with 1 1/2" aluminum cap marked "UCS NW RP".

Drove steel fence post next to the monument.

**Albert Hertel, PLS 1896, 1997, Geodetic Control Data, GPS #9905**

**NAD 83 (91) Coordinates:**

Geographic State Plane Theta 1°44'51.385"  
45°30'53.03002" N N 683390.469 Int. Ft.  
118°02'08.72310" W E 8833673.339 Int. Ft.

### Description of corner evidence found:

**Monument Found:**

A 2 1/2" aluminum cap, flush with the ground (Union County survey monument). Cap is 0.2 ft. North of the East-West fence line.

**Accessories Found:**

A 5/8" x 30" rebar bears N 67° E 8.65 feet, with 1 1/2" aluminum cap marked "UCS NE RP".

A 5/8" x 30" rebar bears S 40° E 9.22 feet, with 1 1/2" aluminum cap marked "UCS SE RP".

A 5/8" x 30" rebar bears S 40° W 8.85 feet, with 1 1/2" aluminum cap marked "UCS SW RP".

A 5/8" x 30" rebar bears N 75° W 10.30 feet, with

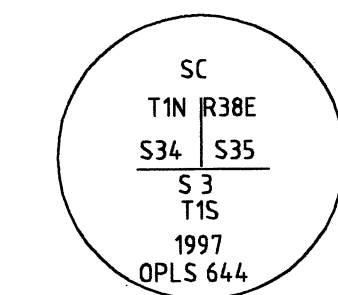
1 1/2" aluminum cap marked "UCS NW RP".

### Description of monument and accessories I established to perpetuate the original location of this corner:

None.

**NAD 83 (CORS 2002) Coordinates:**

Geographic State Plane (North Zone)  
45°30'53.0311" N N 208,297.447 Meters  
118°02'08.7238" W E 2,692,503.619 Meters  
Convergence 1°44'51"



### UNION COUNTY SURVEYOR

Date Received 12/8/03

Date Filed 1/30/04

Filed By [Signature]

File Number 046-2003

REGISTERED PROFESSIONAL LAND SURVEYOR  
Evelyn R. Kalb 1/2/04  
OREGON July 25, 1990  
Evelyn R. Kalb 2456  
EXPIRES: 06/30/2005

**CHESEBRO & KALB**  
Land Surveying & Boundary Consulting  
P.O. Box 19  
Mill City, OR 97360

CREW: WALTER, CORDOZA, EDWARDS-HILL, CHESEBRO  
DRAWN BY: KALB  
CHECKED BY: CHESEBRO  
SHEET: 6 OF 9  
JOB NO. 03-02  
503-897-2722



# RECORD OF SURVEY

## MT. EMILY CADASTRAL SURVEY

CONTRACT NO. 53-04R3-9-40C, TASK ORDER UMA-12

UMATILLA NATIONAL FOREST

July - September 2003

SECTIONS 29, 30, 31, 32, 33, 34, 35,

T. 1 N., R. 38 E., W.M.

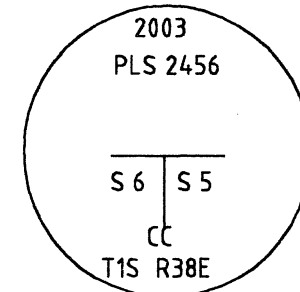
SECTIONS 2, 3, 4, 5, 6, 8,

T. 1 S., R. 38 E., W.M.

UNION COUNTY, OREGON

### History of original corner establishment:

**Frank W. Campbell, 1883, Contract No. 468**  
Set a basalt stone 18 x 12 x 6 ins. 12 ins. in the ground, marked CC with 5 notches on E & 1 notch on W edges, from which:  
A mahogany 4 inch in dia. bears S 50° E 57 lks. (37.6 ft.) dist. marked T1S R38E S5 BT  
A mahogany 5 inch in dia. bears S 15° W 56 lks. (37.0 ft.) dist. marked T1S R38E S6 BT  
No other tree within limits and  
Raised a mound of stone alongside



### Gerald J. Tucker, Forest Ranger, April 29, 1929

**Found:** Corner is a pile of rocks  
A 6" M. Mahogany bears S 10° W 40 lks. (26.4 ft.) marked T1S R38E S6, added location poster  
On Pot Camp Ridge just below the lower saddle and about 100 yards south of summit of ridge. Lines up with baseline fences in Grand "Ronde" Valley.

### Description of corner evidence found:

**Monument Found:**  
Found no evidence of a stone or mound.

### Accessories Found:

No trace was found of the original southeast BT.  
A mountain mahogany, 7 ins. in diam., bears S 15° W 37.0 ft., with a long partially healed face. The face is worn and scribing is no longer visible. Nailed into the tree is an old USFS location tag with 4-29-29 clearly visible. Tucker's field notes indicated that he had seen scribing in 1929.

### Description of monument and accessories I established to perpetuate the original location of this corner:

#### Monuments Set:

At the record bearing and distance from the southwest BT I set a 2" aluminum cap on a 5/8" x 24" rebar for the original corner location. I set no accessories for the original location.

At the intersection with the standard parallel I set a 3 1/4" aluminum cap, marked as shown, on a 2 1/2" x 30" aluminum pipe (standard U.S.F.S. aluminum monument) 10 ins. in the ground to bedrock, with rock mound 3 ft. base & 2 1/2 ft. high.

#### Accessories Set for the monument on the standard parallel:

A 2" aluminum cap, marked as shown, on a 5/8" x 24" rebar bears S 86° E 14.14 ft., with 4 in. showing above the ground.

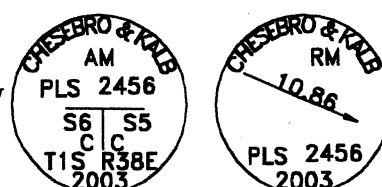
A 2" aluminum cap, marked as shown, on a 5/8" x 24" rebar bears S 68° W 10.86 ft., with 8 in. showing above the ground in a 1 1/2" x 1' stone mound.

The amended closing corner bears S 0°33'52" W 14.27 ft.  
The standard corner for Sections 31 & 32 bears S 89° 40'21" W 314.11 ft.

Red paint, posts and signs added as needed.

#### NAD 83 (CORS 2002) Coordinates for monument on standard parallel:

Geographic	State Plane (North Zone)
45°30'52.7296" N	N 208,145.041 Meters
118°05'47.6247" W	E 2,687,755.153 Meters
Convergence 1° 42'16"	



### History of original corner establishment:

**David P. Thompson, Sept 1863, Contract No. 103**  
Set post, from which:

A pine 5 in dia. bears S 65° W 15 lks (9.9 ft.) dist.  
A pine 10 in dia. bears N 10° W 6 lks. (4.0 ft.) dist.  
"Note the remanence of the North boundary is over rough Stony mountains unfit for Settlement Cultivation or Grazing and therefore unsurveyed"

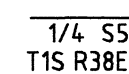
### Gerald J. Tucker, Forest Ranger, April 29, 1929

**Found:** Pile of rocks  
A 12" Y.P. bears N 10° E 25 ft., marked 1/4 S BT, added location poster to BT.  
Corner is one half mile West of northeast corner of the Peffercorn homestead.

### Description of corner evidence found:

No trace of the monument or its accessories were found. We searched on 3 different days. On the last day after narrowing down its possible location we used a metal detector to search for the 1927 location tag. It was not found.

*Note: Thompson's 1/4 corner, if found, would not have controlled the subdivision of Section 5 as Campbell's survey superceded it. If the closing corner between Sections 4 and 5 had been lost, Thompson's 1/4 corner would have controlled this closing corner's longitudinal position. It also would have provided additional information to use in evaluating the evidence found at this same closing corner's position. See August 20, 2003 BLM letter referenced in Narrative.*



THOMPSON'S  
CORNER NOT FOUND  
OR REMONUMENTED

### History of original corner establishment:

Corner not previously set.

### Description of corner evidence found:

Corner not previously set.

### Description of monument and accessories I established to perpetuate the original location of this corner:

#### Monuments Set:

A 3 1/4" aluminum cap, marked as shown, on a 2 1/2" x 30" aluminum pipe (standard U.S.F.S. aluminum monument).

#### Accessories Set:

A ponderosa pine, 13 ins. diam., bears S 73 3/4° E 50.5 ft. marked 1/4 S5 BT on a double blaze with a brass washer marked PLS 2456.

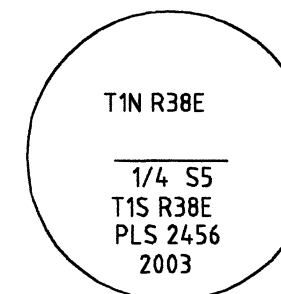
A Douglas fir, 11 ins. diam., bears S 3° W 56.1 ft. marked 1/4 S5 BT on a double blaze with a brass washer marked PLS 2456.

The South quarter corner for Section 32 bears N 89°40'41" W 242.97 ft.

Red paint, posts and signs added as needed.

#### NAD 83 (CORS 2002):

Geographic	State Plane (North Zone)
45°30'52.8523" N	N 208,172.649 Meters
118°05'10.8078" W	E 2,688,553.812 Meters
Convergence 1° 42'40"	



### History of original corner establishment:

Corner not previously set.

### Description of corner evidence found:

Corner not previously set.

### Description of monument and accessories I established to perpetuate the original location of this corner:

#### Monuments Set:

A 3 1/4" aluminum cap, marked as shown, on a 2 1/2" x 30" aluminum pipe (standard U.S.F.S. aluminum monument) 26 ins. in the ground with a rock collar.

#### Accessories Set:

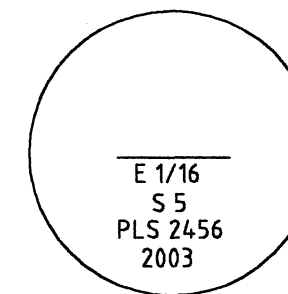
A Douglas fir, 11 ins. diam., bears S 17° E 13.7 ft. marked E 1/16 S5 BT on a double blaze with a brass washer marked PLS 2456.

A Douglas fir, 10 ins. diam., bears S 39 1/2° W 19.0 ft. marked E 1/16 S5 BT on a double blaze with a brass washer marked PLS 2456.

Red paint, posts and signs added as needed.

#### NAD 83 (CORS 2002):

Geographic	State Plane (North Zone)
45°30'52.7773" N	N 208,182.284 Meters
118°04'52.3992" W	E 2,688,953.225 Meters
Convergence 1° 42'53"	



### History of original corner establishment:

**David P. Thompson, Sept 1863, Contract No. 103**

Set post, from which:

A larch 10 in dia. bears N 80° E 40 lks (26.4 ft.) dist.  
A pine 20 in dia. bears S 30° E 90 lks. (59.4 ft.) dist.  
A larch 12 in diam. bears S 5° W 90 lks. (59.4 ft.) dist.

#### Forest Service Corner Card, B. Moore, 1979

Found: Oregon State Board of Forestry location poster on N-S fence. Poster says Sec. Corner 30' North. There is a fence corner with fence East, West, & South. SW of corner approx. 30' is 14" fir stump - possible BT.

### Description of corner evidence found:

#### Monument Found:

I find no evidence of the original corner monument.

#### Accessories Found:

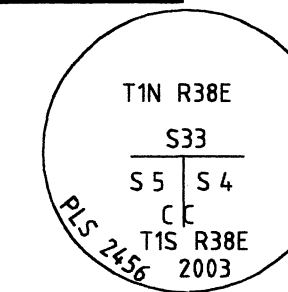
No trace was found of the original accessories.

I find the fence corner described in the 1979 Forest Service corner card. The location poster is now nailed to the fence corner. Approximately 30 ft. South is a wire gate where the location poster was probably located in 1979. The fences in the area appears to have been continually maintained in its same location for many years.

The distance from the fence corner to the creek South of the corner fits the topo call within 1/2 a chain.

After calculating different methods for proportioning the corner and comparing their location with that of the fence corner, I decide that the fence corner is the best available evidence of the original corner location.

See also the narrative on the Record of Survey.



Cap is on the standard parallel.

### Description of monument and accessories I established to perpetuate the original location of this corner:

#### Monuments Set:

As close to the fence corner as feasible I set a 3 1/4" aluminum cap, (standard USFS monument marked as shown at right,) on a 5/8" x 30" rebar 29 ins. in the ground the bottom 17 ins. in concrete filled drill hole with magnet alongside for the original corner location.

At the intersection with the baseline I set a 2" Chesebro & Kalb aluminum cap (marked as shown) on a 5/8" x 24" rebar 2" below the ground level. I set no accessories for the monument on the baseline.

#### Accessories Set for the Monument at the Original Location:

A Douglas fir, 15 ins. diam., bears S 24° W 21.0 ft. marked T1S R38E S5 CC BT on a single blaze with a brass washer marked 2456.

A Douglas fir, 21 ins. diam., bears N 50 3/4° W 37.0 ft. marked T1S R38E S4 CC BT on a single blaze with a brass washer marked 2456.

The closing corner on the baseline bears N 1°12'08" E 7.49 ft.

The standard corner for Sections 32 & 33 bears S 88°29'52" W 226.23 ft.

Red paint, posts and signs added as needed.

#### Accessories Set for the Monument on the Baseline:

A Douglas fir, 15 ins. diam., bears S 18° W 28.1 ft. marked T1S R38E S5 CC BT on a single blaze with a brass washer marked 2456 (This is also an accessory for the amended closing corner and faces amended closing corner).

A Douglas fir, 21 ins. diam., bears N 61° W 32.9 ft. marked T1S R38E S4 CC BT on a single blaze with a brass washer marked 2456 (This is also an accessory for the amended closing corner and it faces amended closing corner).

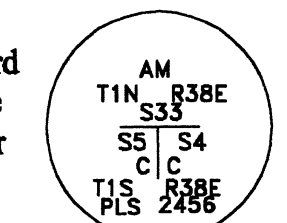
The amended closing corner bears S 1°12'08" W 7.49 ft.

The standard corner for Sections 32 & 33 bears S 89°36'20" W 226.31 ft.

Red paint, posts and signs added as needed.

#### NAD 83 (CORS 2002) Coordinates for Monument on Baseline:

Geographic	State Plane (North Zone)
45°30'52.7223" N	N 208,192.553 Meters
118°04'33.9903" W	E 2,689,352.538 Meters
Convergence 1° 43'08"	



### History of original corner establishment:

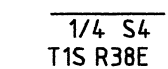
**David P. Thompson, Sept 1863, Contract No. 103**

Set post, from which:

A pine 20 in dia. bears S 52° W 27 lks. (17.8 ft.) dist.  
A pine 18 in dia. bears N 67° W 129 lks (85.1 ft.) dist.

### Description of corner evidence found:

No trace of the monument or its accessories were found. The land on both sides of this quarter corner was under the same ownership for many years, so any fence running south from this corner was not maintained. The current North-South fence is fairly new and was built by recent owners.



CORNER NOT FOUND  
OR REMONUMENTED

UNION COUNTY  
SURVEYOR

Date Received 12/8/03

Date Filed 1/30/04

Filed By [Signature]

File Number 046-2003

REGISTERED  
PROFESSIONAL  
LAND SURVEYOR

Evelyn R. Kalb 1/2/04  
OREGON  
July 25, 1990  
Evelyn R. Kalb  
2456

EXPIRES: 06/30/2005

CHESEBRO  
& KALB

Land Surveying &  
Boundary Consulting

P.O. Box 19  
Mill City, OR 97360

CREW: WALTER, CORDOZA,  
EDWARDS-HILL, CHESEBRO

DRAWN BY: KALB  
CHECKED BY: CHESEBRO

SHEET: 7 OF 9  
JOB NO. 03-02

503-897-2722

# RECORD OF SURVEY

## MT. EMILY CADASTRAL SURVEY

CONTRACT NO. 53-04R3-9-40C, TASK ORDER UMA-12  
UMATILLA NATIONAL FOREST  
July - September 2003

SECTIONS 29, 30, 31, 32, 33, 34, 35,  
T. 1 N., R. 38 E., W.M.  
SECTIONS 2, 3, 4, 5, 6, 8,  
T. 1 S., R. 38 E., W.M.  
UNION COUNTY, OREGON

**History of original corner establishment:**

David P. Thompson, Sept 1863, Contract No. 103  
Set post, from which:  
A pine 20 in. dia. bears S 28° W 180 lks. (118.8 ft.) dist.  
A pine 24 in. dia. bears S 67° W 61 lks. (40.3 ft.) dist.  
A pine 30 in. dia. bears N 67° W 129 lks. (85.1 ft.) dist.

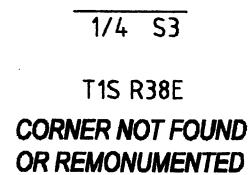


**Description of corner evidence found:**

No trace of the monument or its accessories were found. The land on both sides of this quarter corner is under the same ownership, so any fence running south from this corner was not maintained. The area is under cultivation and there are no trees in the area.

**History of original corner establishment:**

David P. Thompson, Sept 1863, Contract No. 103  
Set post, from which:  
A pine 18 in. dia. bears S 47° W 48 lks. (31.7 ft.) dist.  
A pine 15 in. dia. bears N 18° W 22 lks. (14.5 ft.) dist.

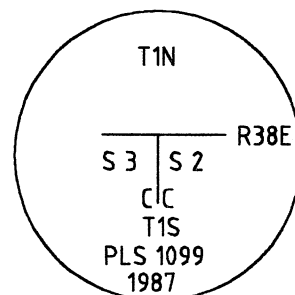


**Description of corner evidence found:**

No trace of the monument or its accessories were found. The land on both sides of this quarter corner is under the same ownership, so any fence running south from this corner was not maintained. The area is under cultivation and there are no trees in the area.

**History of original corner establishment:**

David P. Thompson, Sept 1863, Contract No. 103  
The corner to Sections 2 and 3 (no mention of what was set and no tie to the standard corner), from which:  
A pine 24 in. dia. bears S 40° E 114 lks. (75.2 ft.) dist.  
A pine 20 in. dia. bears S 62° W 317 lks. (209.2 ft.) dist.  
A pine 24 in. dia. bears N 15° W 54 lks. (35.6 ft.) dist.



A. H. McClain, 1953, C.S. 4

Calls a stone at the northeast corner of Section 3, with an established fence line running South.

James G. Voelz, 1971, C.S. 25-71

"Corner stone found" at the "correction cor."

Gary L. Langlitz, 1987, C.S. 35-87, 170-87R

Found: no evidence of the original corner, but found an unmarked angular 14" x 9" x 5" basalt stone, lying on its side at the corner of fences East and South with prominent cultivation line west. This is the only stone visible in the area.

Set: At the location of the found stone we set a 2" x 30" aluminum pipe 29" in the ground, with aluminum cap attached. The found stone is buried along the East side of the aluminum monument. No corner accessories are available at this location.

Duane I. Griffith, PLS 644, 1997, C.S. 022-1997

Found Aluminum Cap, See MOS 035-1987.

**Description of corner evidence found:**

Found a 2 1/2" aluminum cap (Union County Survey monument), flush with the ground, marked as shown. Corner is 0.5 ft. northerly of and East-West-South fence corner. No evidence of original accessories remain.

**Description of monument and accessories I established to perpetuate the original location of this corner:**

Accessories set:

A 2" aluminum cap on a 5/8" x 24" rebar bears S 39°44' E 25.7 ft. marked "T1S R38E S 2-3 RM2".

A 2" aluminum cap on a 5/8" x 24" rebar bears S 61° 29' W 24.05 ft. marked "T1S R38E S 2-3 RM1".

The standard corner between Sections 34 & 35 bears S 89°54'41" W 185.54 ft.

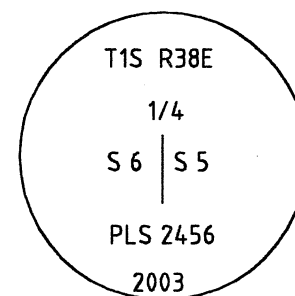
The northeast accessory for the standard corner between Sections 34 & 35, a 5/8" x 30" rebar with 1 1/2" aluminum cap marked "UCS NE RP", bears N 89° W 177.6 ft.

**NAD 83 (CORS 2002) Coordinates:**

Geographic	State Plane (North Zone)
45°30'53.0339" N	N 208,299.259 Meters
118°02'06.1188" W	E 2,692,560.126 Meters
Convergence: 1°42'14"	

**History of original corner establishment:**

Frank W. Campbell, 1883, Contract No. 468  
Set a basalt stone 10 x 10 x 7 ins. in the ground, marked 1/4 on W face, from which:  
A fir 6 inch in dia. bears N 45° E 56 lks. (37.0 ft.) dist. marked 1/4S BT  
A fir 12 inch in dia. bears N 35° W 65 lks. (42.9 ft.) dist. marked 1/4S BT



**Description of corner evidence found:**

Found no trace of the original monument or its accessories.

**Description of monument and accessories I established to perpetuate the original location of this corner:**

Monument Set:

At the single proportionate position I set a standard U.S.F.S. monument (3 1/4 in. x 30 in. diam. aluminum cap on a 2 1/2 in. aluminum pipe), buried 26 ins. in the ground with a rock collar and a magnet at its base. Guard post with Land Survey Monument sign northerly 4.0 ft.

Accessories Set:

A white fir, 26 ins. diam. bears N 61° E 26.7 ft. marked 1/4 S5 BT with a brass washer marked PLS 2456 on a double blaze.

A white fir, 6 ins. diam., bears S 70 1/4° E 10.5 ft. marked X BT with a brass washer marked PLS 2456 on a double blaze.

An Englemann spruce, 14 ins. diam., bears S 47 3/4° W 19.2 ft. marked 1/4 S6 BT with a brass washer marked PLS 2456 on a double blaze.

A white fir, 8 ins. diam., bears N 44 1/4° W 36.5 ft. marked X BT with a brass washer marked PLS 2456 on a double blaze.

Signs, red paint and nail side center on bearing trees.

**NAD 83 (CORS) Coordinates:**

Geographic	State Plane (North Zone)
45°30'25.5049" N	N 207,305.243 Meters
118°05'47.2383" W	E 2,687,788.621 Meters
Convergence 1°42'13"	

**History of original corner establishment:**

Corner not previously established.

**Description of monument and accessories I established to perpetuate the original location of this corner:**

Monument Set:

At the calculated position I set a standard U.S.F.S. monument (3 1/4 in. x 30 in. diam. aluminum cap on a 2 1/2 in. aluminum pipe), buried 24 ins. in the ground with a rock collar and a magnet at its base.

Accessories Set:

A Douglas fir, 30 ins. diam., bears N 88° E 34.4 ft., marked X BT with a brass washer marked PLS 2456 on a double blaze.

A western larch, 13 ins. diam., bears S 72 3/4° E 33.7 ft., marked C 1/4 S5 BT with a brass washer marked PLS 2456 on a double blaze.

A ponderosa pine, 27 ins. diam., bears S 53 1/4° W 26.9 ft., marked C 1/4 S5 BT with a brass washer marked PLS 2456 on a double blaze.

A white fir, 5 ins. diam., bears N 32 3/4° W 5.2 ft., marked X BT with a brass washer marked PLS 2456 on a double blaze.

Signs, red paint and nail side center on bearing trees.

**NAD 83 (CORS 2002) Coordinates:**

Geographic	State Plane (North Zone)
45°30'26.0806" N	N 207,346.751 Meters
118°05'10.5400" W	E 2,688,584.307 Meters
Convergence: 1°42'42"	

**History of original corner establishment:**

Corner not previously established.

**Description of monument and accessories I established to perpetuate the original location of this corner:**

Monument Set:

At the calculated position I set a standard U.S.F.S. monument (3 1/4 in. x 30 in. diam. aluminum cap on a 2 1/2 in. aluminum pipe), buried 26 ins. in the ground with a rock collar.

Accessories Set:

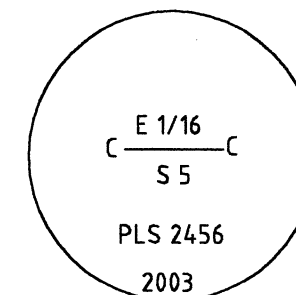
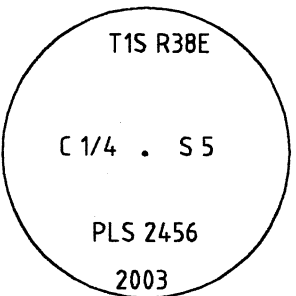
A white fir, 22 ins. diam., bears N 12 3/4° E 25.4 ft. marked CE 1/16 S5 BT on a double blaze with a brass washer marked PLS 2456.

A white fir, 36 in. diam., bears N 86 1/2° W 50.6 ft. marked CE 1/16 S5 BT on a double blaze with a brass washer marked PLS 2456.

Signs, red paint and nail side center on bearing trees.

**NAD 83 (CORS 2002) Coordinates:**

Geographic	State Plane (North Zone)
45°30'26.3600" N	N 207,366.979 Meters
118°04'52.6567" W	E 2,688,972.048 Meters
Convergence: 1°42'55"	



**History of original corner establishment:**

David P. Thompson, Oct. 1, 1863, Contract No. 103  
Set post from which:

A larch 15 inch in dia. bears N 30° E 37 lks. (24.4 ft.) dist.  
A larch 15 inch in dia. bears N 30° W 33 lks. (21.8 ft.) dist.

**Description of corner evidence found:**

Found no trace of the original monument or its accessories.

**Description of monument and accessories I established to perpetuate the original location of this corner:**

Monument Set:

At the single proportionate position I set a standard U.S.F.S. monument (3 1/4 in. x 30 in. diam. aluminum cap on a 2 1/2 in. aluminum pipe), buried 24 ins. in the ground with a rock collar.

Accessories Set:

A Douglas fir, 16 ins. diam. bears N 15 1/2° E 27.0 ft. marked X BT on a double blaze.

A white fir, 14 ins. diam., bears S 61 3/4° E 36.1 ft. marked 1/4 S4 BT on a double blaze.

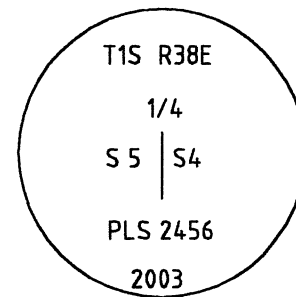
A ponderosa pine, 24 ins. diam., bears S 48 1/4° W 142.4 ft. marked X BT on a double blaze.

A ponderosa pine, 15 ins. diam., bears N 28 1/4° W 48.5 ft. marked 1/4 S5 BT on a double blaze.

Signs, red paint and nail side center on bearing trees.

**NAD 83 (CORS 2002) Coordinates:**

Geographic	State Plane (North Zone)
45°30'26.6386" N	N 207,387.206 Meters
118°04'34.7734" W	E 2,689,359.789 Meters
Convergence 1°43'08"	



**History of original corner establishment:**

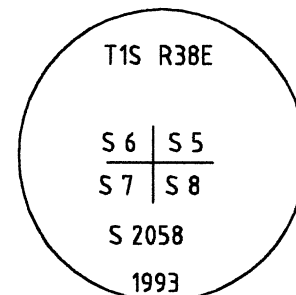
Frank W. Campbell, 1883, Contract No. 468  
A point about 300 ft. above gulch, set a basalt stone 16 x 14 x 8 ins. 11 ins. in the ground, marked with 5 notches on S & E edges, from which:

A pine 28 inch in dia. bears N 65° E 225 lks (148.5 ft.) dist. marked T1S R38E S5 BT

A pine 12 inch in dia. bears S 70° E 114 lks. (75.2 ft.) dist. marked T1S R38E S8 BT

A pine 36 inch in dia. bears S 55° W 40 lks. (26.4 ft.) dist. marked T1S R38E S7 BT

A pine 22 inch in diam. bears N 45° W 168 lks. (110.9 ft.) dist. marked T1S R38E S6 BT



**UNION COUNTY SURVEYOR**

Date Received 12/18/03  
Date Filed 1/30/04  
Filed By Ely R. Kalb  
File Number 046-2003

REGISTERED PROFESSIONAL LAND SURVEYOR  
Ely R. Kalb 1/2/04  
OREGON  
July 25, 1990  
Evelyn R. Kalb  
2456  
EXPIRES: 06/30/2005

**CHESEBRO & KALB**  
Land Surveying & Boundary Consulting  
P.O. Box 19  
Mill City, OR 97360

CREW: WALTER, CORDOZA, EDWARDS-HILL, CHESEBRO  
DRAWN BY: KALB  
CHECKED BY: CHESEBRO  
SHEET: 8 OF 9  
JOB NO. 03-02  
503-897-2722



**History of original corner establishment: (continued)**

**Floyd W. Kendall, Forest Ranger, May 13, 1924**

*Found:* No corner monument found.

- A 40" Y.P. bears NE marked T1S R38E S5 BT SE BT not found
- A 38" Y.P. dead snag bears S marked T1S R38E S7 BT
- A 20" Y.P. bears NW marked T1S R38E S6 BT
- Corner on government trail.

**Ronald E. Stoll, PLS 2058, 1994, C.S. 050-1994, Union Co. 088-1994R**

*Found:*

- A 36" fir(?) bears N 69° E 148.9 feet with scar & K-tag (record pine, one is wrong) *Note: This is a ponderosa pine.*
- A down tree with scar & tag the base of which now bears S 10° W 32 feet has slid down hill
- A 20" snag bears N 53° W 112.3 feet
- Set:* a 2 1/2" x 30" aluminum pipe, with 3" cap, 22" in the ground, with mound of stone, from which:
  - A 19" fir bears N 84 1/2° E 104.8 feet scribed T1S R38E S5 BT
  - A 6" pine bears S 83°45' E 56.3 feet scribed T1S R38E S8 BT
  - A 9" pine bears S 32 1/4° W 51.1 feet scribed T1S R38E S7 BT
  - An 11" pine bears N 65°45' W 127.7 feet scribed T1S R38E S6 BT

**Description of corner evidence found:**

*Monument Found:*

Found a 3 1/4 in. aluminum cap on a 2 1/2 in. aluminum pipe, with rock collar firmly set with 8 ins. showing above the ground. A guard post with Land Survey Monument Sign bears northerly 1.0 ft.

*Accessories Found:*

- A ponderosa pine, 39 ins. diam., bears N 69° E 148.9 ft., alive and healthy with scribing visible on a single blaze. (Orig. BT)
- Original southeast bearing tree not found.
- A down tree with scar and tag, the base of which bears S 10° W 32 feet has slid downhill. (Orig. BT)
- A snag, 23 ins. diam., bears N 53° W 112.3 ft., scribing visible. (Orig. BT)
- A fir, 24 ins. diam., bears N 84 1/2° E 104.8 ft., alive and healthy with scribing visible on a double blaze. (Stoll BT)
- A ponderosa pine, 10 ins. diam., bears S 83 3/4° E 56.3 ft., alive and healthy with scribing visible on a double blaze. (Stoll BT)
- A ponderosa pine, 12 ins. diam., bears S 32 1/4° W 51.1 ft., alive and healthy with scribing visible on a double blaze. (Stoll BT)
- A ponderosa pine, 15 ins. diam., bears N 65 3/4° W 127.7 ft., alive and healthy but with some of its top dead, with scribing visible on a double blaze.

**Description of monument and accessories I established to perpetuate the original location of this corner:**

*Accessories Set:*

Red paint, posts and signs added as needed.

*NAD 83 (CORS 2002) Coordinates:*

Geographic	State Plane (North Zone)
45°29'58.9389" N	N 206,485.758 Meters
118°05'46.8613" W	E 2,687,821.197 Meters
Convergence 1° 42'17"	

**History of original corner establishment:**

**Frank W. Campbell, 1883, Contract No. 468**

*Set:* a basalt stone 12 x 10 x 5 ins. 8 ins. in the ground, marked 1/4 on N face, from which:

- A fir 20 inch in dia. bears S 15° E 54 lks. (35.6 ft.) dist. marked 1/4S BT
- A fir 6 inch in dia. bears N 45° W 70 lks. (46.2 ft.) dist. marked 1/4S BT

**F. A. Monroe, J.F., December 11, 1933**

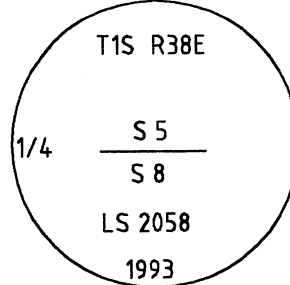
*Found:* a rock 12" above the ground

- A 14" D.F. bears N 33° W 50 lks. (33.0 ft.), overgrown, added location poster.
- A 20" D.F. stump 5' high, bears S 30° E 70 lks. (46.2 ft.), marked 1/4 S BT
- Corner is on a very steep E rocky open slope in P.P. type.
- The NW corner of Mr. Horn's fence around the NENE 1/4 section 8 T1S, R34E is 17 chains east of corner.

**Ronald E. Stoll, PLS 2058, 1994, C.S. 050-1994, Union Co. 088-1994R**

*Found:* I find a small mound of stone, mostly buried. In the mound is a stone 10 x 12 x 3 with what I believe is a 4 visible and the portion of the stone above broken off. I search for the broken piece to no avail.

- A 19" fir bears N 50 1/4° W 45.7 feet with scar visible.
- Set:* At the location of the found stone, I set a 2 1/2 x 30" aluminum pipe with 3" cap 20" in the ground with mound of stone to cap, from which:
  - A 17" pine bears N 12° E 63.3 feet scribed 1/4 S5 BT
  - A 12" fir bears S 78° E 49.7 feet scribed 1/4 S8 BT
  - A 9" fir bears S 6° W 29.0 feet scribed 1/4 S8 BT



**Description of corner evidence found:**

*Monument Found:*

Found a 3 1/4 in. aluminum cap on a 2 1/2 in. aluminum pipe, firmly set with 8 ins. showing above the ground. A guard post with Land Survey Monument Sign bears westerly 1.0 ft.

*Accessories Found:*

- Original southeast bearing tree not found.
- A Douglas fir, 22 ins. diam., bears N 50 1/4° W 45.7 ft., alive and healthy with visible scribing. (Orig. BT)
- A ponderosa pine, 23 ins. diam., bears N 12° E 63.3 ft., alive and healthy with scribing visible on a double blaze. (Stoll BT)
- A Douglas fir, 16 ins. diam., bears S 78° E 49.7 ft., alive and healthy, with scribing visible on a double blaze. (Stoll BT)
- A Douglas fir, 12 ins. diam., bears S 6° W 29.0 ft., alive and healthy, with scribing visible on a double blaze. (Stoll BT)

**Description of monument and accessories I established to perpetuate the original location of this corner:**

*Accessories Set:*

Red paint, posts and signs added as needed.

*NAD 83 (CORS 2002) Coordinates:*

Geographic	State Plane (North Zone)
45°29'59.7882" N	N 206,535.638 Meters
118°05'10.2774" W	E 2,688,614.251 Meters
Convergence 1°42'43"	

**History of original corner establishment:**

**Ronald E. Stoll, PLS 2058, 1994, C.S. 050-1994, Union Co. 085-1994R**

*Set:* A 2 1/2 x 30" aluminum pipe with 3" cap 24" in the ground with mound of stone to cap, from which:

- A 19" fir bears S 51° W 23.2 feet scribed E 1/16 S8 BT
- An 11" pine bears N 25° W 10.6 feet scribed E 1/16 S5 BT

**Description of corner evidence found:**

*Accessories Found:*

- A fir, 21 ins. diam., bears S 51° W 23.2 ft., with with scribing visible.
- A ponderosa pine, 12 ins. diam., bears N 25° W 10.6 ft., with scribing visible.

**Description of monument and accessories I established to perpetuate the original location of this corner:**

*Accessories Set:*

Red paint, posts and signs added as needed.

*NAD 83 (CORS 2002) Coordinates:*

Geographic	State Plane (North Zone)
45°29'59.8747" N	N 206,549.569 Meters
118°04'52.9299" W	E 2,688,990.593 Meters
Convergence 1°42'55"	

**History of original corner establishment:**

**David P. Thompson, Oct 1, 1863, Contract No. 103**

*Set:* post from which:

- A pine 6 inch in dia. bears N 40° E 11 lks. (7.3 ft.) dist.
- A pine 10 inch in dia. bears S 35° E 52 lks. (34.3 ft.) dist.
- A pine 10 inch in dia. bears S 60° W 46 lks. (30.4 ft.) dist.
- A pine 8 inch in dia. bears N 50° W 11 lks. (7.3 ft.) dist.

**Frank W. Campbell, 1883, Contract 468**

*Found:* A post 4 ins. square from which:

- A pine 6 ins. in diam. bears N 40° E 11 lks. (7.3 ft.) dist. marked T1S R38E S4 BT
- A pine 10 ins. in diam. bears S 35° E 52 lks. (34.3 ft.) dist. marked T1S R38E S9 BT
- A pine 10 ins. in diam. bears S 60° W 46 lks. (30.4 ft.) dist. marked T1S R38E S8 BT
- A pine 8 ins. in diam. bears N 50° W 11 lks. dist. (7.3 ft.) marked T1S R38E S5 BT

**Floyd Kendall, Forest Ranger, April 7, 1924**

*Found:* No corner monument found

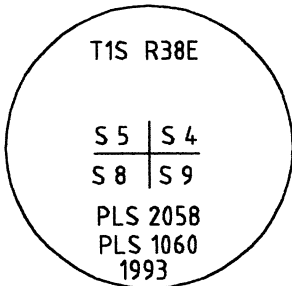
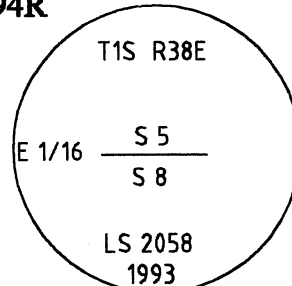
- An 18" Y.P. bears SE 10 ft. marked T1S R38E S9 BT
- Point of rotted log marked T1S R38E S4
- Southwest and northwest BT are destroyed.
- Corner near corner of fence running North & East.

**Gerald J. Tucker, Forest Ranger, April 27, 1929**

*Found:* stake & rocks, 4" x 4" x 16"

- A 24" Y.P. S 45° E 31 lks. (20.5 ft.) marked S9, location poster on BT
- Fence runs east and north from corner. Corner is 1/4 mile north of Summerville driveway where it enters the Forest.

*Note: Different handwriting notes that this tree is now down and new cruiser tag placed on a PP 18" bears N 43° E 45 lks. (29.7 ft.)*



# RECORD OF SURVEY

## MT. EMILY CADASTRAL SURVEY

CONTRACT NO. 53-04R3-9-40C, TASK ORDER UMA-12

UMATILLA NATIONAL FOREST

July - September 2003

SECTIONS 29, 30, 31, 32, 33, 34, 35,  
T. 1 N., R. 38 E., W.M.  
SECTIONS 2, 3, 4, 5, 6, 8,  
T. 1 S., R. 38 E., W.M.  
UNION COUNTY, OREGON

**History of original corner establishment: (continued)**

**James G. Voelz, PLS 381, 1971, C.S. 4-71**

*Found:* bearing tree at S 35 E 52 (34.3 ft.) lks. dist., original scribe visible.

**Howard L. Perry, RPE 8348, 1976, C.S. 55-76**

*Found:* "5/8" pin & bearing tree".

**Howard L. Perry, PLS 1294, 1978, C.S. 70-78**

*Found:* "5/8" pin & bearing tree".

**Ronald E. Stoll, PLS 2058, 1994, C.S. 050-1994, Union Co. 084-1994R**

*Found:* 5/8" x 30" rebar with disintegrated plastic cap 12" above ground. Rebar has been in place for several years and appears to fit probable bearing tree location reasonably.

Found remains of southeast bearing tree, down and decayed with scribe visible.

Found possible remains of tap root for southwest bearing tree.

*Set:* a 2 1/2 x 30" aluminum pipe with 3" cap 22" in the ground with mound of stone to cap, from which:

- An 11" pine bears N 3° E 11.8 feet scribed T1S R38E S4 BT
- A 16" fir bears N 47 1/2° E 48.3 feet scribed T1S R38E S4 BT
- A 7" pine bears S36 1/2° E 20.5 feet scribed T1S R38E S9 BT
- An 8" pine bears S 56 1/2° W 25.3 feet scribed T1S R38E S8 BT

**Description of corner evidence found:**

*Monument Found:*

Found a 3 1/4 in. aluminum cap on a 2 1/2 in. aluminum pipe, firmly set and 6 ins. showing above the ground in a rock collar. Also found a 5/8" x 30" rebar lying on ground nearby. A 28 in. Douglas fir with a Land Survey Monument Sign is southwesterly 7 feet.

*Accessories Found:*

- A partially buried stump with BT tag and decayed blaze is out of position on easterly shoulder of old road. It appears to have been moved by a cat. (Original SE BT)
- No trace found of the other original bearing trees.
- A ponderosa pine, 15 ins. diam., bears N 3° E 11.8 ft., alive and healthy with scribing visible on a partially healed single blaze. (Stoll BT)
- A Douglas fir, 19 ins. in diam., bears N 47 1/2° E 48.3 ft., alive and healthy, with scribing visible on a partially healed single blaze. (Stoll BT)
- A ponderosa pine, 11 ins. in diam., bears S 36 1/2° E 20.5 ft., alive and healthy with scribing visible on a partially healed single blaze.
- A ponderosa pine, 10 ins. diam., bears S 56 1/2° W 25.3 ft., alive and healthy with scribing visible on a single blaze.

**Description of monument and accessories I established to perpetuate the original location of this corner:**

*Accessories Set:*

Red paint, posts and signs added as needed.

*NAD 83 (CORS 2002) Coordinates:*

Geographic	State Plane (North Zone)
45°29'59.9616" N	N 206563.539 Meters
118°04'35.5741" W	E 2,689,367.115 Meters
Convergence 1°43'07"	

**UNION COUNTY SURVEYOR**

Date Received 2/18/03  
Date Filed 1/30/04  
Filed By Greg T. Blake  
File Number 046-2003

REGISTERED PROFESSIONAL LAND SURVEYOR

*Greg T. Blake*

OREGON  
July 25, 1990  
Evelyn R. Kalb  
2456

EXPIRES: 06/30/2005

**CHESEBRO & KALB**

Land Surveying & Boundary Consulting

P.O. Box 19  
Mill City, OR 97360

CREW: WALTER, CORDOZA, EDWARDS-HILL, CHESEBRO

DRAWN BY: KALB  
CHECKED BY: CHESEBRO

SHEET: 9 OF 9  
JOB NO. 03-02

503-897-2722