

NOTE:
For monumentation information, see monumentation records filed separately

BASIS OF BEARING

The South line of Section 25, Township 3 North, Range 39 East of the Willamette Meridian being South 89°57'00" East, as per Union County Survey No. 14-85

SCALE: 1"=1000'

NARRATIVE

This survey was done at the request of John Manwell of Forest Capital. The purpose of the survey is to monument selected corners within Section 24 and the GLO Corners controlling the subdivision of the section. The metes and bounds tract near the Southwest corner of the section was also monumented. The line from the West 1/4 corner of Section 24 to the West 1/4 corner of Section 25 was retraced by County Surveyor S.B. Morgan during the road survey for Bowman Loop. I use his retracement and place the monuments at the centerline of the road, as called for in the road survey, and by deeds recorded in deed volume 111, pages 246 through 254, which granted the right of way to the county. The West 1/4 corner of Section 25 was placed at the intersection of Bowman Loop and Moses Creek Lane. The Southwest corner and West 1/4 corner of Section 24 were placed at the centerline of Bowman Loop at the intersection of existing fence lines. I found an unrecorded brass plate marked as being the Southeast corner of Section 24. Due to harmony, I accept this monument for the section corner. The Northwest corner of Section 24 was placed in an existing North-South fence line at proportionate distance North and South. The fence line is at the distance called for in the original notes from an existing creek to the East. I therefore accept the East-West position of the fence as being the best available evidence of the original corner placement. The remaining corners not found were placed by proportionate measurement and the section subdivided according to the BLM Manual of Surveying Instructions. The metes and bounds tract was placed at the record deed calls using the subdivision of the section as established. The fences in this area are relatively harmonious with the tract as shown. I find no other unusual conditions on this survey.

REFERENCE MATERIAL

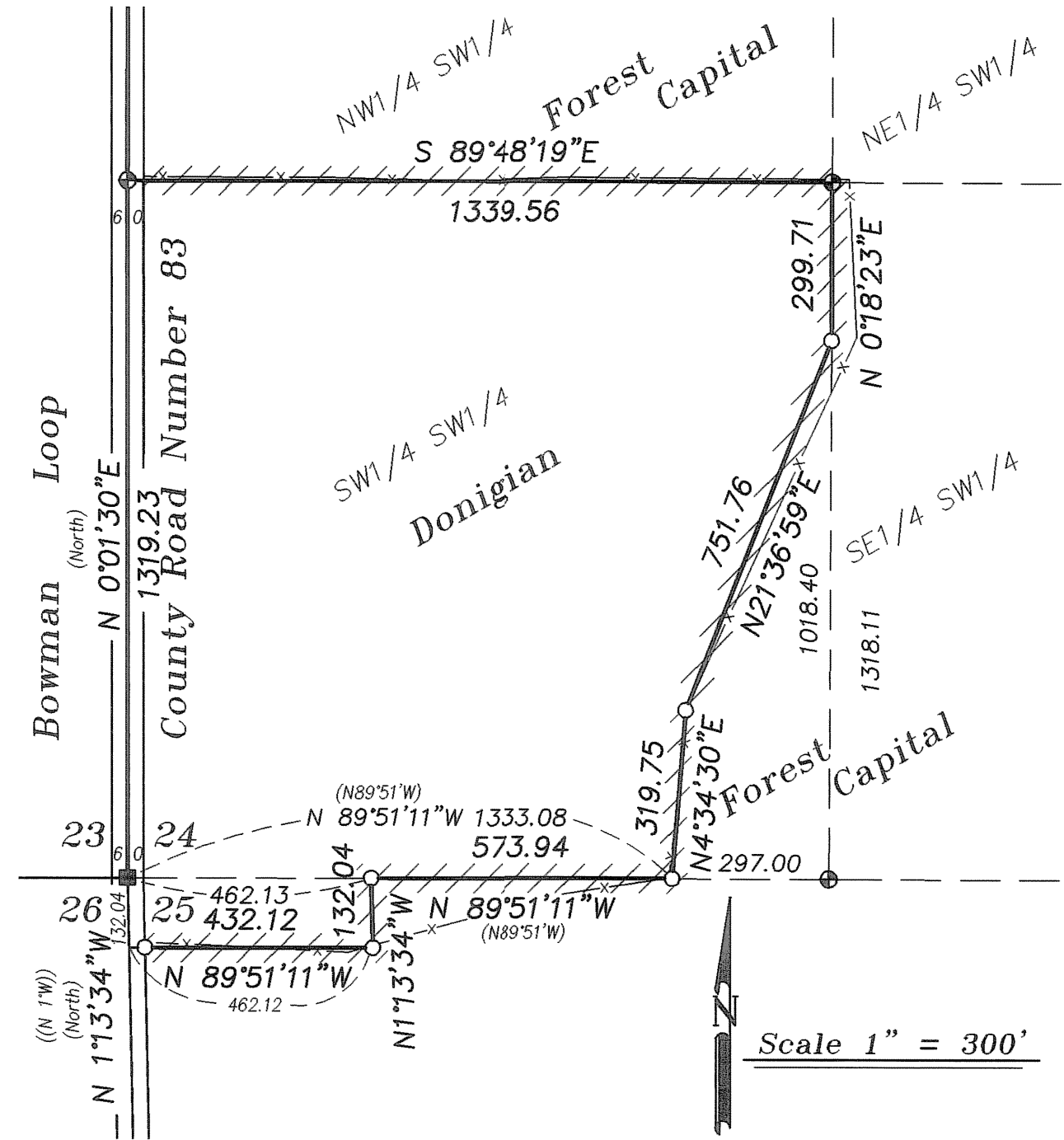
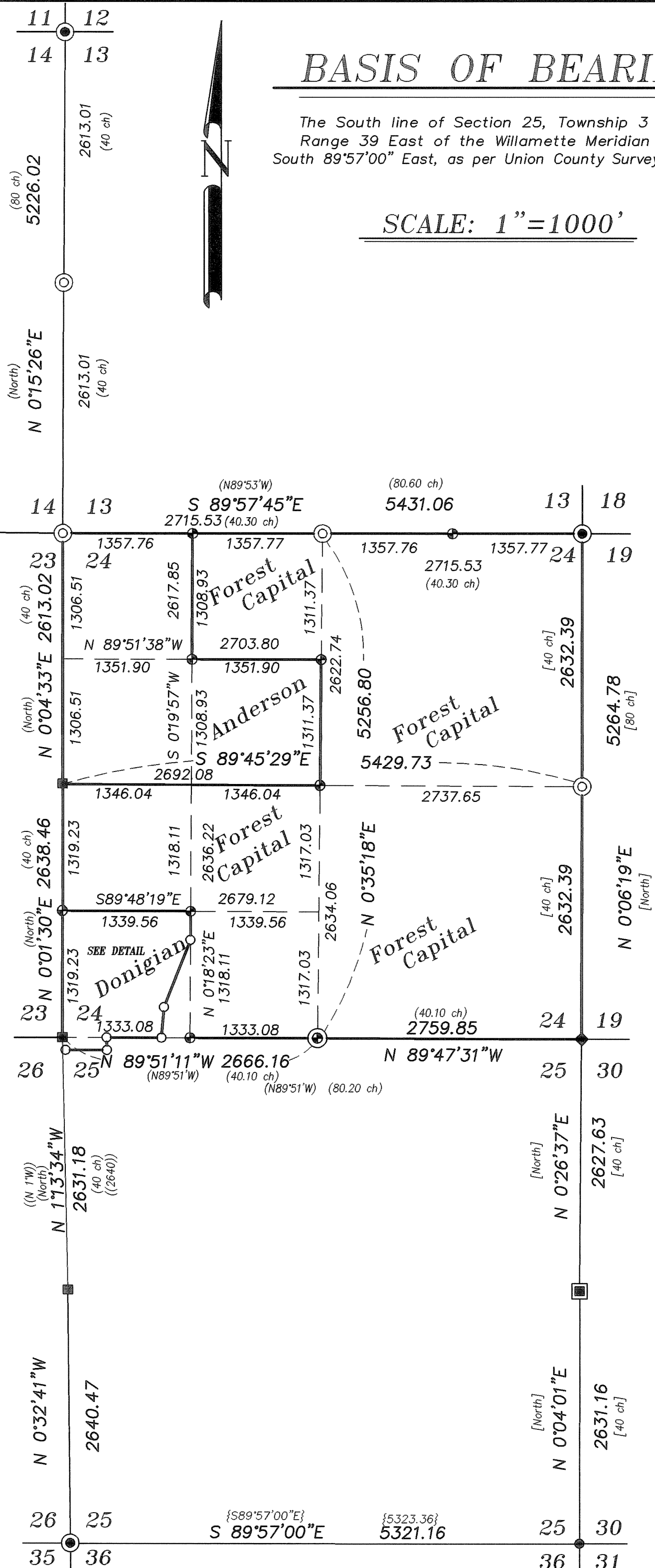
GLO Contract Number 437 by Rufus S. Moore, dated June 3, 1882
GLO Contract Number 498 by Frank W. Campbell, dated May 15, 1884
Union County monumentation records
Survey Number 49-71
Survey Number 77-71
Survey Number 14-85

DEED REFERENCES

Volume 111 Pages 246 through 254
Volume 144 Page 635
Microfilm Number 25113
Microfilm Number 39608
Microfilm Number 44823
Microfilm Number 143836
Microfilm Number 20045408

LEGEND

- Found 5/8" iron pin set by Survey Number 77-71
- ◆ Found unrecorded brass plate set in concrete monument
- ⊙ Found 2" aluminum monument as per monumentation records (unless otherwise noted)
- ⊕ Set 2 1/2"x30" aluminum monument from original GLO evidence
- Set 5/8"x30" "copper clad" iron pin with 2 1/2" brass cap in Water Valve box from existing corner accessories
- ⊙ Set 2 1/2"x30" aluminum monument at position determined by survey
- Set 5/8"x30" "copper clad" iron pin with 2 1/2" brass cap at position determined by survey
- ⊕ Set 5/8"x30" iron pin with 2 1/2" aluminum cap at position determined by survey
- Set 5/8"x30" iron pin with plastic cap marked "BGB SURVEY MARKER"
- [] Record information of GLO Contract Number 437 by Rufus S. Moore
- () Record information of GLO Contract Number 498 by Frank W. Campbell
- (()) Record information of deed volume 111, pages 246 through 254
- { } Record information of Survey Number 14-85
- x--- Set steel fence posts on line at approximately 250 ft. intervals
- Existing fence line



Detail of the SW 1/4 of the SW 1/4 of Section 24

REGISTERED PROFESSIONAL LAND SURVEYOR
RICK G. ROBINSON
2219
Renewal Date: Dec. 31, 2006

UNION COUNTY SURVEYOR
Date Received 9/14/05
Date Filed 9/15/05
By [Signature]
File No. 017-2005

BAGETT, GRIFFITH & BLACKMAN
2006 Adams Avenue, LaGrande, Oregon
Map of Survey
Monumentation within Section 24, Township 3 North, Range 39 East of the Willamette Meridian
UNION COUNTY, OREGON
SURVEYED FOR Forest Capital
SURVEYED BY R.G.R. 8/05
Scale: As Shown Drawn by: R.G.R. 9/05