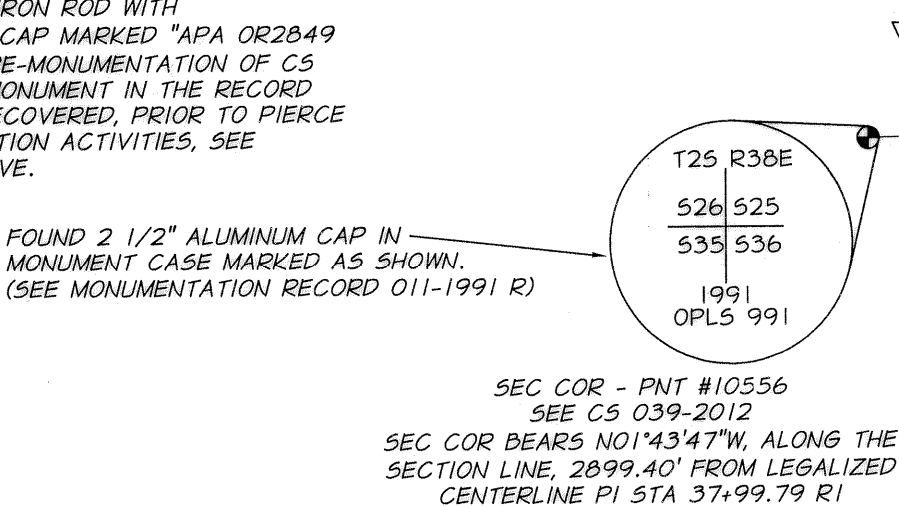


LEGEND

- △ FOUND 5/8" IRON ROD WITH 1-1/2" DIAMETER ALUMINUM CAP MARKED "APA OR 73254 WA 30425" SET BY CS 039-2012, EXCEPT AS NOTED.
- ◇ CALCULATED POSITION FOR CENTERLINE AND CENTERLINE POINT OF INTERSECTION (PI) POINTS, NOTHING SET BY CS 039-2012 OR THIS RE-MONUMENTATION SURVEY.
- FOUND PUBLIC LAND CORNER OR REFERENCE MONUMENT, AS DETAILED ON CS 039-2012.
- SET 5/8" X 30" IRON ROD WITH 1 1/2" ALUMINUM CAP MARKED "APA OR 2849 WA 41295" FOR RE-MONUMENTATION OF CS 039-2012. SET MONUMENT IN THE RECORD POSITION, AS RECOVERED, PRIOR TO PIERCE ROAD CONSTRUCTION ACTIVITIES, SEE SURVEY NARRATIVE.



BASIS OF BEARINGS

BEARINGS ARE BASED UPON THE OREGON COORDINATE SYSTEM - NORTH ZONE NAD 83 (2011), USING THE NGS ONLINE POSITIONING USER SERVICE (OPUS) TO REDUCE STATIC GPS OBSERVATIONS AND THE ODOT OREGON REAL TIME GPS NETWORK (ORGN) CONTROL NETWORK FOR ADDITIONAL REDUNDANT OBSERVATIONS TO VERIFY MONUMENT POSITIONS. A SCALE FACTOR FOR THE SITE WAS CALCULATED USING AN AVERAGE COMBINED SCALE FACTOR OF 0.999771272328 TO OBTAIN GROUND DISTANCES. (GRID TO GROUND = 1.000228782). GRID COORDINATES WERE SCALED BY THIS FACTOR AROUND THE BASE POINT OF THE PROJECT WHICH IS APA CONTROL POINT #524 (N 612607.0890 AND E 8841321.779), IN ORDER TO MATCH UNION COUNTY SURVEY NUMBER 039-2012 (CS 039-2012) FOR THIS REMONUMENTATION SURVEY.

SURVEY NARRATIVE

THIS SURVEY WAS COMPLETED FOR AVISTA CORPORATION FOR THE PURPOSE OF REESTABLISHING RIGHT OF WAY MONUMENTS ALONG THE RIGHT OF WAY OF PIERCE ROAD SET BY UNION COUNTY SURVEY No. (CS) 039-2012. SOME OF THE MONUMENTS FROM CS 039-2012 WERE DESTROYED DURING A PIPELINE CONSTRUCTION PROJECT ALONG PIERCE ROAD. IN PREPARATION FOR THIS REMONUMENTATION SURVEY, A RETRACEMENT SURVEY WAS COMPLETED BEFORE CONSTRUCTION ACTIVITIES WERE COMMENCED TO ESTABLISH THE EXISTING POSITIONS OF MONUMENTS FROM CS 039-2012 THOUGHT TO BE VULNERABLE TO DISTURBANCE.

THE INTENTION OF THIS REMONUMENTATION SURVEY WAS TO REPLACE MONUMENTS IN THE SAME POSITION AS THEY WERE FOUND, PRIOR TO CONSTRUCTION BASED ON THE RECORD RIGHT OF WAY INFORMATION FROM CS 039-2012. RECORD BEARINGS AND DISTANCES FROM CS 039-2012 ARE SHOWN. BEARINGS SHOWN ARE GRID BEARINGS BASED ON THE OREGON STATE PLANE COORDINATE SYSTEM, NORTH ZONE NAD83(2011). DISTANCES SHOWN ARE GROUND DISTANCES.

MONUMENT NUMBER 200 SHOWN ON THIS REMONUMENTATION SURVEY WAS RESET IN THE SAME RECORD POSITION AS NOTED ON CS 039-2012. THAT MONUMENT IS 0.62' EAST OF PIERCE ROAD RIGHT OF WAY AS NOTED ON CS 039-2012. NO ADDITIONAL RIGHT OF WAY RESOLUTION OR BOUNDARY DETERMINATION WAS COMPLETED DURING THE COURSE OF THIS REMONUMENTATION SURVEY.

REFERENCES

- (R1) UNION COUNTY MAP OF SURVEY No. 039-2012 (PIERCE ROAD RIGHT OF WAY LEGALIZATION SURVEY)
- ADDITIONAL REFERENCES
- UNION COUNTY MAP OF SURVEY No. 034-2012
- UNION COUNTY PARTITION PLAT 2009-0014
- UNION COUNTY MAP OF SURVEY No. 030-2007
- UNION COUNTY MONUMENTATION RECORD 003-1993 R
- UNION COUNTY MONUMENTATION RECORD 011-1991 R

REGISTERED PROFESSIONAL LAND SURVEYOR
 OREGON
 JANUARY 20, 1998
 MICHAEL B. POSADA
 02849LS

EXPIRES: 12-31-2018
 SIGNED: 02-23-2018

COORDINATE POINT TABLE

POINT	NORTHING	EASTING
200	622420.145	8841025.039
201	622421.067	8841054.406
202	622421.216	8841084.416
203	622270.762	8841021.356
204	622270.892	8841051.365
205	622271.021	8841081.374
206	622095.098	8841026.432
207	622095.965	8841056.419
208	622096.831	8841086.407
209	621145.653	8841049.351
210	621146.235	8841079.345
211	621146.816	8841109.340
212	621120.337	8841049.843
213	621121.239	8841079.830
214	621122.142	8841109.816
215	620688.990	8841062.821
216	620689.965	8841092.806
217	620690.939	8841122.790
218	620027.824	8841085.900
219	620028.837	8841115.883
220	620029.850	8841145.867
221	619221.298	8841112.240
222	619222.277	8841142.224
223	619223.257	8841172.208
224	618221.831	8841144.882
225	618222.810	8841174.866
226	618223.789	8841204.850
227	617422.257	8841170.995
228	617424.216	8841230.963
229	617367.092	8841202.809
10816	617328.686	8841235.605
10901	620029.172	8841126.642
10556	625319.142	8840966.884

UNION COUNTY SURVEYOR

UNION COUNTY SURVEYOR

Date Received 2/27/18

Date Filed 2/27/18

By [Signature] DEPUTY

File No. 005-2018

MAP OF SURVEY - REMONUMENTATION OF C.S. 039-2012
PIERCE ROAD - RIGHT OF WAY (LEGALIZED)
SECS. 35 & 36, TOWNSHIP 2 SOUTH, RANGE 38 EAST & SECS. 1 & 2 TOWNSHIP 3 SOUTH, RANGE 38 EAST WILLAMETTE MERIDIAN, UNION COUNTY, OREGON

FOR: AVISTA CORPORATION P.O. BOX 3727 MSC-6 SPOKANE, WA 99202

SCALE: 1" = 200'

DATE: FEB. 23, 2018

JOB NO. 1225-03 (070)

Anderson Perry & Associates, Inc.
 ENGINEERING · SURVEYING · NATURAL RESOURCES
 LA GRANDE, OR. - WALLA WALLA, WA. - PRINEVILLE, OR.

1/1

1901 N. FIR ST. LA GRANDE, OR 97850 (541) 963-8309

SURVEY NUMBER 005-2018