

REFERENCE MATERIAL

- Survey Number 86
- Survey Number 87
- Survey Number 88
- Survey Number 89
- [A] Survey Number 90
- Survey Number 91
- Survey Number 6-61
- Survey Number 18-65
- Survey Number 10-66
- Survey Number 26-67
- [B] Survey Number 68-71
- [C] Survey Number 59-72
- [D] Survey Number 73-72
- [E] Survey Number 85-72
- [F] Survey Number 86-72
- [G] Survey Number 9-73
- [H] Survey Number 85-73
- [I] Survey Number 98-74
- [J] Survey Number 12-75
- [K] Survey Number 66-75
- [L] Survey Number 35-77
- [M] Survey Number 18-78
- [N] Survey Number 30-78
- [O] Survey Number 43-78
- [P] Survey Number 44-78
- [Q] Survey Number 120-78
- [R] Survey Number 132-78
- [S] Survey Number 134-78
- [T] Survey Number 3-79
- [U] Survey Number 11-80
- [V] Survey Number 35-80
- [W] Survey Number 23-82
- [X] Survey Number 48-82
- [Y] Survey Number 17-89
- Survey Number 18-89 (1922 monumentation)
- [Z] Survey Number 055-1994
- [AA] Survey Number 041-1998
- [BB] Survey Number 025-2006
- [CC] Survey Number 024-2007
- [DD] Survey Number 017-2010
- [EE] Survey Number 012-2013
- [FF] Survey Number 030-2013
- [GG] Survey Number 035-2016
- [HH] Partition Plat 2000-06

BASIS OF BEARING

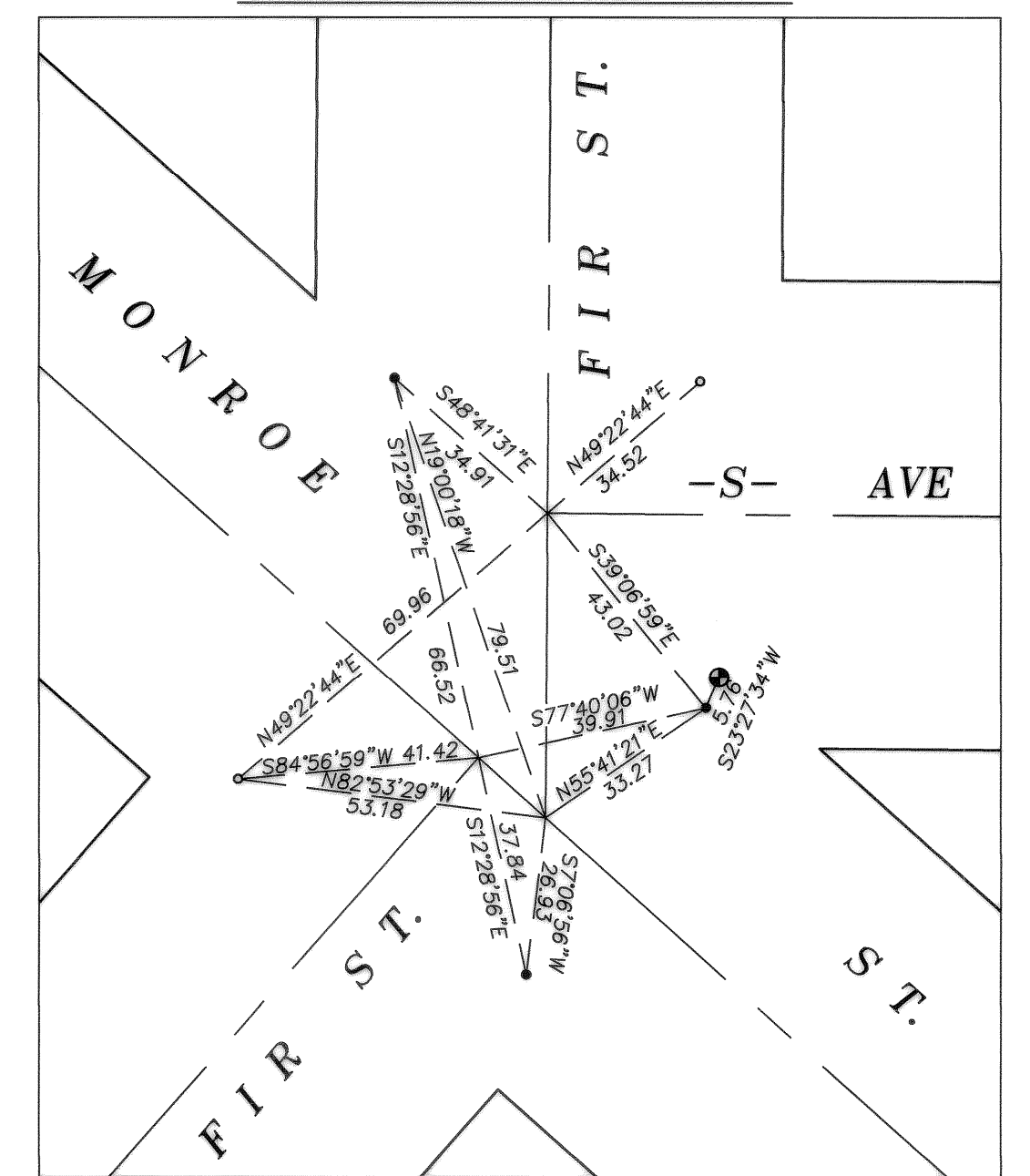
Forward bearing as published by the U.S. and G.S. from Δ COLLEGE to Δ VALLEY Dated 1946.

SCALE: 1"=100'

LEGEND

- Found iron pipe, set by 1922 monumentation of La Grande (Survey Number 18-89)
- Found 2" brass disc, set by Survey Number 012-2013
- Found lead plug reference, set by 1922 monumentation (unless otherwise specified)
- Found unrecorded 2 1/2" brass cap
- Manhole
- Set brass screw in concrete with brass washer marked OPLS 83571
- [] Record measurement as per noted reference
- () Record measurement as per Survey Number 18-89 (1922 monumentation)
- Centerline

DETAIL SCALE 1"=40'



NARRATIVE

This survey was done at the request of Norm Paulus, public works director for the City of La Grande. Mr. Paulus wanted the centerline monuments along Fir Ave. perpetuated following a paving project. I place the intersections of Fir St. and Madison St. and Monroe St. at record position as per Survey Number 024-2007. The intersections at S Ave. and T Ave. were placed at record position of Partition Plat 2000-06. Doing so is harmonious with the remaining lead plug references.

Along Fir St. between Z Avenue and V Avenue, I place the centerline intersections at proportionate position. Doing so is harmonious with the record measurements and methodology employed by other surveys in the area. Almost all intersections fall on top of manholes with the exception of the Court St. intersection, where there is the original pipe in a valve box, and the intersections at S Ave. and Monroe St. Due to the heavy traffic in this intersection, no centerline monument was set, but additional references were taken.

I replace all references so that centerline positions are perpetuated by a minimum of four references. At the intersection of W Ave., due to crumbling curbs, the NW and SE intersection references are not directly in line with each other.

Along Greenwood St. the intersection of U Ave. was established by bearing intersection in Survey 017-2010. I reestablish that position from the intersection at U Ave. and Fir St. From there to the monument at Z Ave. and Greenwood, I place the intermediate intersections at proportionate position.

I find no unusual conditions with this survey.

REGISTERED PROFESSIONAL LAND SURVEYOR
 JEFFREY S. HSU
 OREGON
 JUNE 2, 2010
 83571
 Renewal Date: June 30, 2019

UNION COUNTY SURVEYOR
 Date Received 4/25/18
 Date Filed 4/25/18
 By J. S. Hsu
 File No. 013-2018

BAGETT, GRIFFITH & BLACKMAN
 2006 Adams Avenue, LaGrande, Oregon
 Map of Survey
 Centerline Intersections along Fir Street and Greenwood Streets, City of La Grande

UNION COUNTY, OREGON
 SURVEYED FOR City of La Grande
 SURVEYED BY J. S. H.
 Scale: 1" = 100' Drawn by: J. S. H. Apr. 2018
SURVEY NUMBER 013-2018

