

# BASIS OF BEARING

The Southeast corner of Section 11 to the Northeast corner of Section 2, Township 2 South, Range 35 East of the Willamette Meridian being North 0°02'02" East, as per Union County Survey Number 027-2003

SCALE: 1" = 1000'

## LEGEND

- Found 1" iron pipe with 2 1/2" brass cap, marked as per Umatilla County monumentation records
- Found 2 1/2" aluminum pipe with 2 1/2" aluminum cap, marked as per monumentation record, set by Union County Survey Number 015-2016/Umatilla County Survey Number 16-066-B
- Found 2" iron pipe with 2 1/2" brass cap, set by GLO survey executed by L.E. Wilkes
- Set 2 1/2"x30" aluminum pipe with 2 1/2" aluminum cap, marked as per Union/Umatilla County monumentation records, filed separately
- Set 5/8"x30" iron rebar with 2" aluminum cap, marked as per Union County monumentation records, filed separately
- ( ) Record measurement as per field notes of GLO Contract No. 451, executed by Rufus Moore
- [ ] Record measurement as per field notes of GLO survey executed by L.E. Wilkes

## REFERENCE MATERIAL

Union County Monumentation Records  
 Umatilla County Monumentation Records  
 Union County Survey Number 11-82  
 Union County Survey Number 43-82  
 Union County Survey Number 044-1994  
 Union County Survey Number 015-2016  
 Umatilla County Survey Number 82-087-B  
 Umatilla County Survey Number 16-066-B

Field Notes for GLO Contract Number 397, executed by Jacob Cooper, dated July 1, 1881

Field Notes for GLO Contract Number 451, executed by Rufus Moore, dated June 12, 1882

Field Notes for GLO Contract Number 635, dated April 19, 1895, executed by Marius Buchanan

Field Notes for GLO Survey, Resurvey and Retracement, executed by L.E. Wilkes, under Special Instructions dated April 18, 1917 included in Group No. 38

## DEED REFERENCES

Microfilm Document Number 2013-6120649  
 Microfilm Document Number 2013-6120652  
 Microfilm Document Number 2013-6120653

## NARRATIVE

This survey was done at the request of Patrick Marolla, on behalf of Hancock Forest Management, land manager for the land within. Mr. Marolla wanted select corners set in Section 4 and 9 prior to logging.

I find and accept the existing monuments as shown hereon. I make a diligent search for the GLO corners not brought to county standard but can find no remaining evidence of any except for the NW corner of Section 4. At the East quarter corner of Section 9, I find the tree mentioned in Union County monumentation record 08-88R where it mentions the NW bearing tree is in good condition. Umatilla County monumentation record mentions a Georgia Pacific K-tag and that pitch was covering scribing. Tree has since been uprooted and has fallen over and was thus cut open. Despite having shown evidence of numerous blaze marks and/or attempts to chop out said blaze marks, I can find no evidence of scribing or heal marks which date back to the 1800's. I therefore reject this tree as being an original bearing tree.

The East and West quarter corners of Section 4 were not found. Because the ownerships in the West half of Section 4 are both under Hancock management, it was decided by the client to not go the expense of a full survey to determine the location of the Center-West sixteenth corner. The line between the East and West half of the West half of Section 4 is therefore approximate for cutting line purposes only.

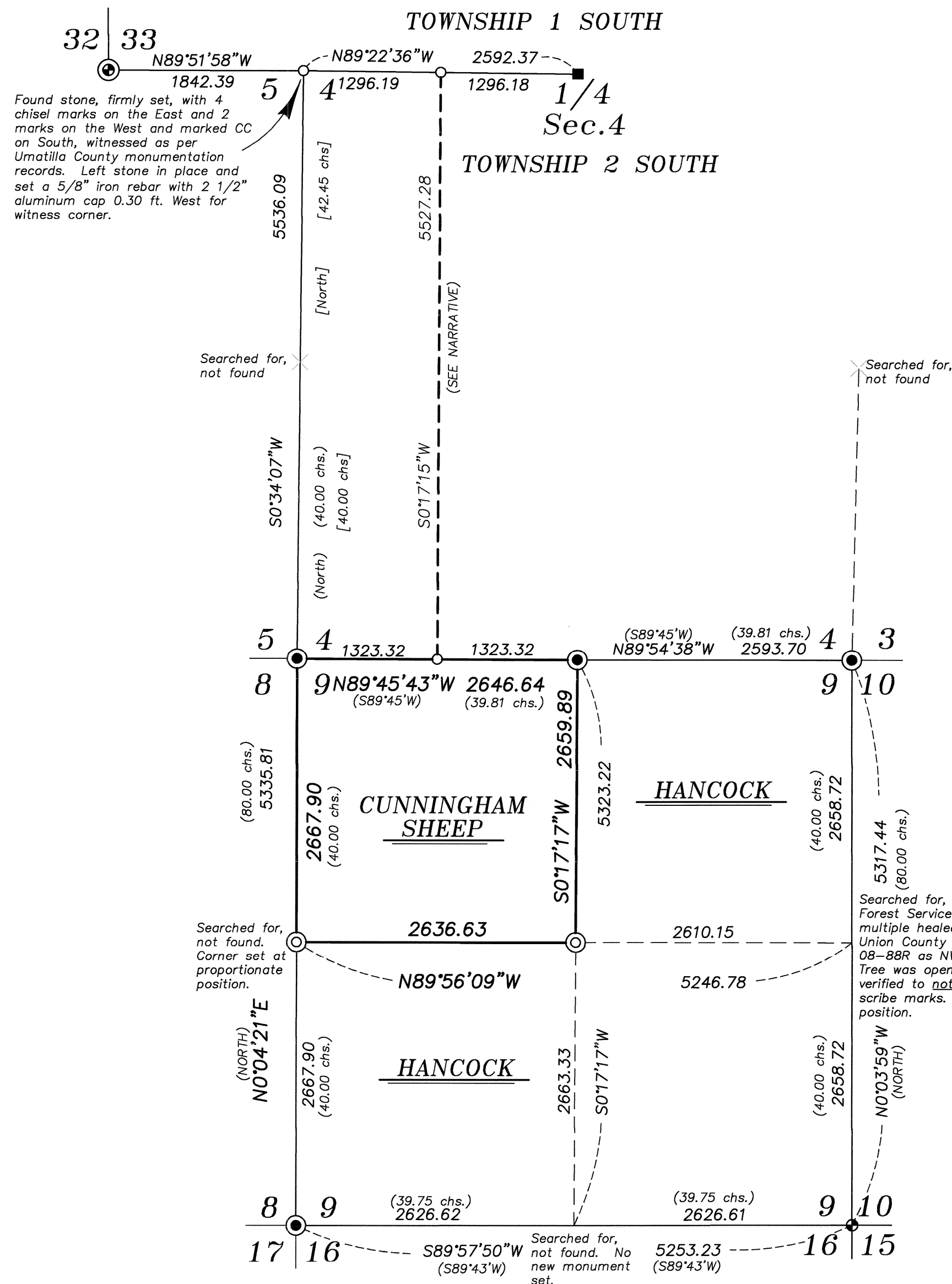
Due to topography, the North line of Section 4 has had an interesting survey history. The original North line of Section 4 was done by Cooper in 1881, however finding the topography too steep, he does not proceed West past the North quarter corner. Rufus Moore subdivided portions of Township 1 and 2 South, Range 35 East in 1882. In his subdivision of Township 2 South, Range 35 East, due to the lack of a Northwest quarter corner of Section 4, he terminates his line at the West quarter corner of Section 4.

The Northwest corner was eventually set by Marius Buchanan in 1885 in a survey of the South line of Township 1 South, Range 35 East. Buchanan subsequently subdivides the portions of said Township that were originally omitted by Moore. Both Moore and Buchanan's subdivisions of Township 1 South, Range 35 East, had lines that closed from the North and lotted sections along the South tier of Sections.

In 1917, L.E. Wilkes resurveys the North line of Section 5, T2S, R35E and completes the portion of Moore surveys that did not close on the North line, including the West line of Section 4. In this survey, coming from the West quarter corner of Section 4 heading Northerly, he resets the NW corner 15 lks. East of Buchanan's, calls the corner a closing corner, and destroys evidence of Buchanan's corner. Despite platting a distance along the North line of Section 4 (one that differs from previous field notes), Wilkes' field notes do not indicate a retracement of Buchanan's line.

Though I find no rationale for Wilkes' rejection of Buchanan's corner, and despite calling this corner a closing corner, I find there is technically no retracement between the Wilkes corners along the North line of Section 5 and the Buchanan corners East. The distance between the Buchanan position and the Wilkes closing corner is minimal (less than 10 ft) and Wilkes' own retracement of the closing corner of the North line of Section 5 indicate the closing corner set by Buchanan at the SE corner of Section 32 was minimally off line (2 lks). I believe that a true method of placing the closing corner position would be to first reestablish the original Buchanan position of the NW corner of Section 4, as this is the only survey that surveyed the North line of Section 4. As this computation would be done from the existing Wilkes closing corner I believe this would be nothing more than a mental exercise. I therefore accept the Wilkes stone in place as representing the true NW corner of Section 4 instead of as a traditional closing corner.

I find no other unusual conditions with this survey.



UNION COUNTY SURVEYOR  
 Date Received 10/24/18  
 Date Filed 10/24/18  
 By J. S. H.  
 File No. 042-2018

REGISTERED PROFESSIONAL LAND SURVEYOR  
 JEFFREY S. HSU  
 83571  
 Renewal Date: June 30, 2019

BAGETT, GRIFFITH & BLACKMAN  
 2006 Adams Avenue, LaGrande, Oregon  
 Map of Survey  
 Situate in Section 4 and 9, Township 2 South, Range 35 East of the Willamette Meridian  
 UMATILLA COUNTY, OREGON  
 SURVEYED FOR Hancock Forest Management  
 SURVEYED BY J. S. H.  
 Scale: 1" = 1000' Drawn by: J. S. H. Oct. 2016

SURVEY NUMBER 042-2018