



BASIS OF BEARING

Solar observation taken at the North quarter corner of Section 15, Township 1 North, Range 39 East of the Willamette Meridian.

SCALE: 1"=40'

LEGEND

- Found monument as described, held as centerline intersection monument
- Found 5/8" iron pin, set by Survey Number 13-72
- ▲ Found 1/2" iron pin set by Survey Number 36-75
- ◆ Found 5/8" iron pin set by Survey Number 63-75
- Found 5/8" iron pin set by Survey Number 18-86
- Set 5/8"x30" iron pin with plastic cap marked BGB SURVEY MARKER, unless otherwise specified
- () Record measurement as per plot of Hindman's addition
- [] Record measurement as per Survey Number 36-75
- / / Record measurement as per Survey Number 09-86
- < > Record measurement as per Survey Number 18-86
- • Record measurement as per Survey Number 63-75

REFERENCE MATERIAL

Plot of Hindman's Addition
 Survey Number 13-72
 Survey Number 46-74
 Survey Number 63-75
 Survey Number 36-75
 Survey Number 18-86
 Survey Number 09-86
 Survey Number 016-2006

DEED REFERENCES

Book 111, Page 451
 Book 132, Page 318
 Book 132, Page 478
 Book 138, Page 680
 Microfilm Document Number 132200
 Microfilm Document Number 20080309
 Microfilm Document Number 20173830

NARRATIVE

This survey was done at the request of Antonette Johnson, owner of the land within. Ms. Johnson wanted the exteriors of her property monumented. I recover centerline monumentation as shown hereon. As these have a long history of use I accept them in place. I use monumentation set by Survey Number 18-86 to place the intersection of 11th St and Cedar St. I find the distance a bit longer than record. Finding the pin at the Northeast corner of Block 76 to have likely moved with the loose hillside to the North, I hold the pin for line and establish the Northeast corner of said block at record distance from the found pin 128.76 feet to the South. I drive a line from the monument at Cedar St. and 12th St. to a point 30 feet from this position to establish the Cedar St. right of way, and intersect this line with a 30 ft. offset line from the found pins on the East line of said Block 76 to establish the intersection of 11th and Cedar St. From the railroad spike at the centerline of Alder St. and 11th St. I drive a line South through a point 30 foot offset from the monument at the Southwest corner of Block 71. I intersect this line with a line drawn from the pin at the intersection of 9th St. and Birch St to a point 30 feet offset from the same monument to determine the Birch St. and 11th St. intersection. I can find no remains of the concrete monument called for in Surveys 46-74, 36-75, 13-72, and 63-75, (all executed by Jim Voelz) at the intersection of Birch St. and 12th St. I run a line from the intersection of Birch St. and 11th St. as previously determined through a point midpoint between the monuments at the SW corner of Block 70 and the Northwest corner of Block 73 to establish the Birch St. centerline. I intersect this with a line between the monuments along 12th St. and Cedar St. to determine the Birch St. right of way. This is harmonious with the monument set by Survey 13-72. The monument at the Northwest corner of Block 73 is off as shown.

There are several building encroachments as shown. The house encroachment on the North side is currently in the process of being addressed by easement, to be filed separately. According to the landowner, the garage on the South side is currently believed to be owned by the adjoining owner to the South, despite the fact that it almost entirely falls on this property.

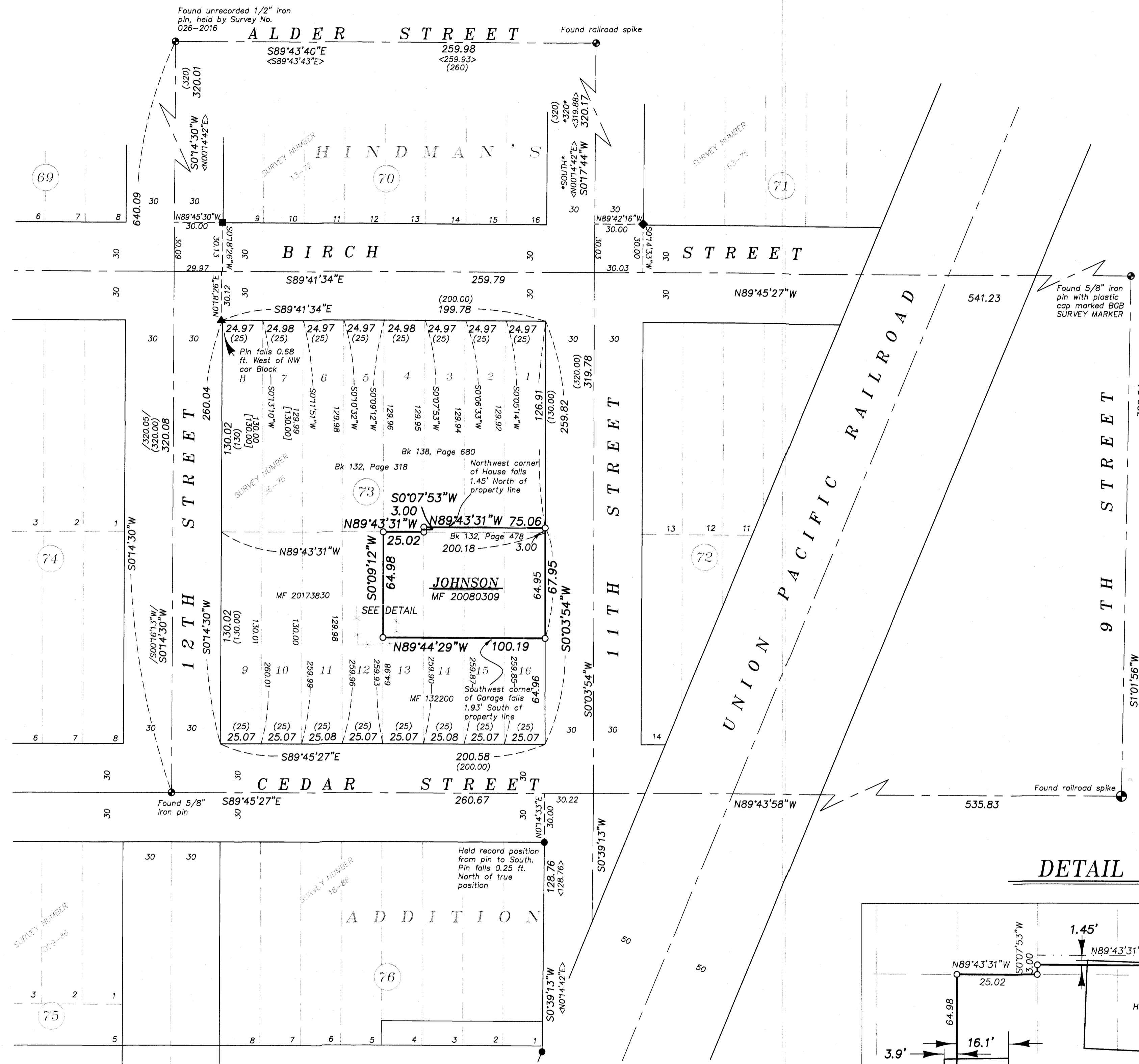
I find no other unusual conditions with this survey.

REGISTERED PROFESSIONAL LAND SURVEYOR

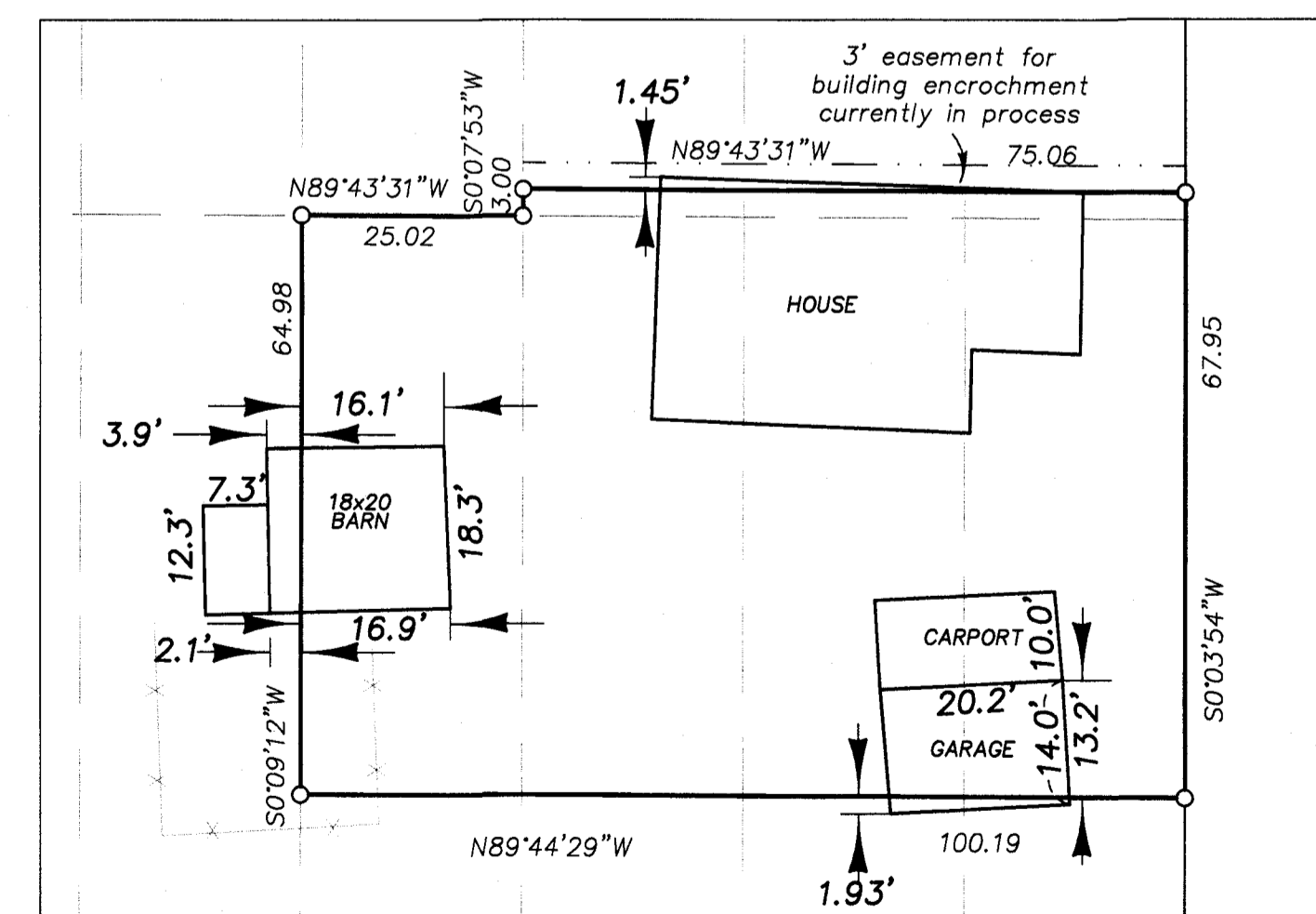
 OREGON
 JEFFREY S. HSU
 83571
 Renewal Date: June 30, 2021

UNION COUNTY SURVEYOR
 Date Received 7/29/20
 Date Filed 7/29/20
 By J. S. H.
 File No. 023-2020

BAGETT, GRIFFITH & BLACKMAN
 2006 Adams Avenue, LaGrande, Oregon
 Map of Survey
 A portion of Lots 1, 2, 3, 13, 14, 15, and 16, Block 73, Hindman's Addition, City of Elgin
 UNION COUNTY, OREGON
 SURVEYED FOR Antonette Johnson
 SURVEYED BY J. S. H.
 Scale: 1" = 40' Drawn by: J. S. H. June 2020



DETAIL MAP



SCALE: 1"=20'